



GEO Calibration

Hygro-Mini

PRODUCT OVERVIEW

GENERAL SPECIFICATIONS

CALIBRATION TO (17025 TRACEABLE TO NIST)	TRANSFER STANDARD	No Charge		
	CERTIFICATE	17025 Validation (Additional Fees Apply)		
OPERATING AMBIENT CONDITIONS	TEMPERATURE	18 °C to 28 °C		
	HUMIDITY	Up to 80 % RH		
STORAGE CONDITIONS	TEMPERATURE	-20 °C to 50 °C		
	HUMIDITY	0 % to 95 % RH (non-condensing)		
CONTROLLED RANGE	TEMPERATURE	18 °C to 35 °C @ Ambient Temperature 23 °C		
	HUMIDITY@ 18°C	5 % to 75% RH		
	HUMIDITY@ 23°C	5 % to 85 % RH		
	HUMIDITY@ 30°C	5 % to 80 % RH		
CALIBRATION SYSTEM ACCURACY	TEMPERATURE	± 0.10 °C		*Based on Probe Accuracy
	HUMIDITY	± 1.00 % RH		*Based on Probe Accuracy
	CONTROLLER TYPE	PID Controller		
UNIFORMITY	TEMPERATURE	0.20 °C		
	HUMIDITY	0.40 % RH @ 23 °C		
STABILITY	TEMPERATURE	0.10 °C		
	HUMIDITY	0.15 % RH @ 23 °C		
RAMP / SOAK RATE OF CHANGE <small>*Depends on ambient and desiccant conditions</small>	Temperature	High → Low	1.00 °C / minute	*Typical (Based on Desiccant)
		Low → High	1.00 °C / minute	*Typical (Based on Desiccant)
	Humidity	High → Low	3.00 % RH / minute	*Typical (Based on Desiccant)
		Low → High	3.00 % RH / minute	*Typical (Based on Desiccant)
WARM-UP PERIOD	Ambient Condition	30 Minutes Maximum		
	Cold	45 to 60 Minutes		
RESOLUTION	DISPLAY	Temperature	0.1 °C	
		Humidity	0.1 % RH	

CONSUMABLES

WATER	RESERVOIR	55 ml		
	SPILL RESISTANT	Yes		
	REQUIRED FLUID	Distilled Water Only		
	EST REFILL PERIOD	1 Month (Typical)	*Depends on Usage	
	FILL INDICATOR	Front Panel	*Screen Icon	
DESICCANT	TYPE	Indicating Molecular Sieve		
	SIZE	90 CC		
	REPLACEMENT	When Indicating Desiccant is 3/4 Used		
	REPLACEMENT FREQUENCY	Depends Entirely on User Workload		
	LOCATION	Front Side Mounted		
BATTERY	SIZE	6000 mAh 12 VDC		
	TYPE	Lithium-Ion		
	CYCLES	300 (Average)	*Typical	
	AVERAGE USE TIME	3 Hours		
RECALIBRATION	FREQUENCY	Depends on User Uncertainty Requirements		
		Once Per Year Recommended		
EXTERNAL INTERFACE	USB	Cable and Software Included		

**Information subject to change, please visit our website for updates at www.geocalibration.com.

MECHANICAL

GENERATOR DIMENSIONS	Measurement Type	Width	Depth	Height
	Metric	26.97 cm	31.81 cm	11.00 cm
	English	10.62 in	12.52 in	4.33 in
WORKING DIMENSIONS AND VOLUME	Measurement Type	Depth	Diameter	
	Metric	16.49 cm	6.06 cm	
	English	6.49 in	2.39 in	
	Volume	0.15 Liter Effective Working Volume		
WEIGHT	Unit Only (With Desiccant)	Metric	4.00 kg	
		English	8.82 lb	
	Shipping	Metric	8.00 kg	
		English	17.64 lb	
POWER SUPPLY FOR EXTERNAL USE	Power Supply	12 Volt DC @ 10A		
STANDARD PORT QUANTITY	1 Port			
CAPACITY	1 RH Probe Size	6 - 25 mm		

Ordering Information

*Customization is Available

* Complete Accessory List is Available at www.geocalibration.com

Standard Supply Package

Single Probe Port Door	Desiccant Canister	Fill Syringe
Mains Power Cord	Calibration Documents	

Accessories

Additional	Description	Part Number	Description	Part Number
	Desiccant Canister w/ Material	01-020-01-0010	Battery Replacement	01-020-36-0005



GEO **Calibration**

Hygro-Mini X

PRODUCT OVERVIEW

GENERAL SPECIFICATIONS

CALIBRATION TO (17025 TRACEABLE TO NIST)	TRANSFER STANDARD	No Charge		
	CERTIFICATE	17025 Validation (Additional Fees Apply)		
OPERATING AMBIENT CONDITIONS	TEMPERATURE	18 °C to 28 °C		
	HUMIDITY	Up to 80 % RH		
STORAGE CONDITIONS	TEMPERATURE	-20 °C to 50 °C		
	HUMIDITY	0 % to 95 % RH (non-condensing)		
CONTROLLED RANGE	TEMPERATURE	10 °C to 50 °C @ Ambient Temperature 23 °C		
	HUMIDITY@ 18°C	5 % to 75% RH	HUMIDITY@ 35°C	5 % to 75 % RH
	HUMIDITY@ 23°C	5 % to 85 % RH	HUMIDITY@ 40°C	5 % to 70 % RH
	HUMIDITY@ 30°C	5 % to 80 % RH	HUMIDITY@ 50°C	5 % to 65 % RH
CALIBRATION SYSTEM ACCURACY	TEMPERATURE	± 0.10 °C	*Based on Probe Accuracy	
	HUMIDITY	± 1.00 % RH	*Based on Probe Accuracy	
	CONTROLLER TYPE	PID Controller		
UNIFORMITY	TEMPERATURE	0.20 °C		
	HUMIDITY	0.40 % RH @ 23 °C		
STABILITY	TEMPERATURE	0.10 °C		
	HUMIDITY	0.15 % RH @ 23 °C		
RAMP / SOAK RATE OF CHANGE <small>*Depends on ambient and desiccant conditions</small>	TEMPERATURE	High → Low	1.00 °C / minute	*Typical (Based on Desiccant)
		Low → High	1.00 °C / minute	*Typical (Based on Desiccant)
	HUMIDITY	High → Low	3.00 % RH / minute	*Typical (Based on Desiccant)
		Low → High	3.00 % RH / minute	*Typical (Based on Desiccant)
WARM-UP PERIOD	AMBIENT CONDITIONS	30 Minutes Maximum		
	COLD	45 to 60 Minutes		
RESOLUTION	DISPLAY	Temperature	0.1 °C	
		Humidity	0.1 % RH	

CONSUMABLES

WATER	RESERVOIR	55 ml		
	SPILL RESISTANT	Yes		
	REQUIRED FLUID	Distilled Water Only		
	EST. REFILL PERIOD	1 Month (Typical)	* Depends on Usage	
	FILL INDICATOR	Front Panel	*Screen Icon	
DESICCANT	TYPE	Indicating Molecular Sieve		
	SIZE	360 CC		
	REPLACEMENT	When Indicating Desiccant is 3/4 Used		
	REPLACEMENT FREQUENCY	Depends Entirely on User Workload		
	LOCATION	Right Side Mounted		
BATTERY	SIZE	11000 mAh 12 VDC		
	TYPE	Lithium-Ion		
	CYCLES	300 (Average)	*Typical	
	AVERAGE USE TIME	5 Hours		
RECALIBRATION	FREQUENCY	Depends on User Uncertainty Requirements		
		Once Per Year Recommended		
EXTERNAL INTERFACE	USB	Cable and Software Included		

MECHANICAL

GENERATOR DIMENSIONS	Measurement Type	Width	Depth	Height
	Metric	31.01 cm	27.77 cm	11.49 cm
	English	12.21 in	10.93 in	4.53 in
WORKING DIMENSIONS AND VOLUME	Measurement Type	Depth	Diameter	
	Metric	14.35 cm	6.10 cm	
	English	5.65 in	2.40 in	
	Volume	0.4 Liter Effective Working Volume		
	WEIGHT	Unit Only (With Desiccant)	Metric	4.99 kg
English			11.0 lb	
Shipping		Metric	8.00 kg	
		English	17.64 lb	
POWER SUPPLY FOR EXTERNAL USE	Power Supply	12 Volt DC @ 10A		
STANDARD PORT QUANTITY	1 Port			
CAPACITY	1 RH Probe Size	6 - 25 mm		

Ordering Information *Customization is Available

Standard Supply Package

Single Probe Port Door	Desiccant Canister	Fill Syringe
7 Grommets (1/8", 1/4", 3/8", 1/2", 5/8", 3/4", 7/8")	Mains Power Cord	Calibration Documents

Accessories

Doors	Shape	Port Quantity		Connector Type				Part Number
	Circle	1-Port Door		M36 Connectors				01-020-01-0015
Grommets	Port Type	Size (in)	Size (mm)	Part Number	Port Type	Size (in)	Size (mm)	Part Number
	M36	0.000"	0.000	01-004-09-0001	SLIMLINE	0.125"	3.175	01-004-09-0020
	M36	0.125"	3.175	01-004-09-0002	SLIMLINE	0.250"	6.350	01-004-09-0021
	M36	0.250"	6.350	01-004-09-0003	SLIMLINE	0.375"	9.525	01-004-09-0022
	M36	0.375"	9.525	01-004-09-0004	SLIMLINE	0.500"	12.700	01-004-09-0023
	M36	0.500"	12.700	01-004-09-0005	SLIMLINE	0.625"	15.875	01-004-09-0024
	M36	0.625"	15.875	01-004-09-0006	SLIMLINE	0.750"	19.050	01-004-09-0025
	M36	0.750"	19.050	01-004-09-0007	SLIMLINE	0.825"	20.950	01-004-09-0026
	M36	0.875"	22.225	01-004-09-0008	SLIMLINE	1.000"	25.400	01-004-09-0027
	M36	1.000"	25.400	01-004-09-0009				
Assorted	Description			Part Number	Description			Part Number
	Desiccant Canister			01-020-11-0003				
	Battery Replacement			01-022-36-0003				



GEO *Calibration*

Model 1000 SP

PRODUCT OVERVIEW

GENERAL SPECIFICATIONS

CALIBRATION TO (17025 TRACEABLE TO NIST)	TRANSFER STANDARD	No Charge		
	CERTIFICATE	17025 Validation (Additional Fees Apply)		
OPERATING AMBIENT CONDITIONS	TEMPERATURE	18 °C to 28 °C		
	HUMIDITY	Up to 80 % RH		
STORAGE CONDITIONS	TEMPERATURE	-20 °C to 50 °C		
	HUMIDITY	0 % to 95 % RH (non-condensing)		
ALTITUDE	2000 m			
CONTROLLED RANGE	TEMPERATURE	5 °C to 55 °C		
	HUMIDITY@ 18°C	5 % to 95 % RH	HUMIDITY@ 35°C	5 % to 85 % RH
	HUMIDITY@ 23°C	5 % to 95 % RH	HUMIDITY@ 40°C	5 % to 75 % RH
	HUMIDITY@ 30°C	5 % to 90 % RH	HUMIDITY@ 50°C	5 % to 50 % RH
CALIBRATION SYSTEM ACCURACY	TEMPERATURE	± 0.12 °C Or Better	Typically ± 0.10 °C	*Based on Probe Accuracy
	HUMIDITY	± 1.00 % RH Or Better	Typically ± 0.80 %	*Based on Probe Accuracy
	CONTROLLER TYPE	PID Controller		
UNIFORMITY	TEMPERATURE	0.10 °C Or Better	Typically ± 0.10 °C	
	HUMIDITY	0.30 % RH @ 18 °C to 28 °C Or Better		Typically ± 0.25 %
STABILITY	TEMPERATURE	0.05 °C		
	HUMIDITY	0.15 % RH @ 18 °C to 28 °C		
RAMP / SOAK RATE OF CHANGE <small>*Depends on ambient and desiccant conditions</small>	TEMPERATURE	High → Low	1.50 °C / minute	*Typical (Based on Desiccant)
		Low → High	3.00 °C / minute	*Typical (Based on Desiccant)
	HUMIDITY	High → Low	5.00 % RH / minute	*Typical (Based on Desiccant)
		Low → High	10.00 % RH / minute	*Typical (Based on Desiccant)
WARM-UP PERIOD	AMBIENT CONDITIONS	30 Minutes Maximum		
	COLD	30 Minutes		
RESOLUTION	DISPLAY	Temperature	0.01 °C	
		Humidity	0.01 % RH	
		Dew Point	0.01 °C (Calculated)	
	USB	Temperature	0.01 °C	
		Humidity	0.01 % RH	

CONSUMABLES

WATER	RESERVOIR	50 ml		
	SPILL RESISTANT	Yes		
	REQUIRED FLUID	Distilled Water Only		
	EST. REFILL PERIOD	15 Days to 1 Month (Typical) *Depends on Usage		
	FILL INDICATOR	Floating Ball		
DESICCANT	TYPE	Molecular Sieve		
	REPLACEMENT	When Indicating Desiccant is 3/4 Used		
	REPLACEMENT FREQUENCY	Depends Entirely on User Workload		
	LOCATION	Back Side Mounted		
	FASTENER	Desiccant Mounting Bracket Provided		
RECALIBRATION	FREQUENCY	Depends on User Uncertainty Requirements Once Per Year Recommended		

MECHANICAL

	Measurement Type	Width	Depth	Height
GENERATOR DIMENSIONS	Metric	46.00 cm	31.50 cm	15.00 cm
	English	18.11 in	15.16 in	9.26 in
	Measurement Type	Width	Depth	Height
CHAMBER DIMENSIONS	Metric	19.50 cm	13.00 cm	7.45 cm
	English	7.68 in	5.12 in	2.93 in
	Measurement Type	Width	Depth	Height
WORKING DIMENSIONS AND VOLUME	Metric	19.50 cm	13.00 cm	7.45 cm
	English	7.68 in	5.12 in	2.93 in
	Volume	1.5 Liter Effective Working Volume		
WEIGHT	Unit Only	Metric	8.5 kg	
		English	18.74 lb	
POWER SUPPLY FOR EXTERNAL USE	Power Supply	12 Volt DC @ 1A		
STANDARD PORT QUANTITY	Depends on doors	Availability: 3 Ports		
			Probe Range	Actual Unit Range
PROBE ANALOG OUTPUTS AVAILABLE	0 - 1 Volt	Temperature	- 40.00 to + 60.00 °C	+ 5.00 to + 60.00 °C
		Humidity	0 to + 100.00 %	+ 5.00 to + 95.00 %

Ordering Information *Customization is Available

Standard Supply Package

Square 3-Port Door	Desiccant Canister	Fill Syringe
7 Grommets (1/8", 1/4", 3/8", 1/2", 5/8", 3/4", 7/8")	Mains Power Cord	Calibration Documents

Accessories

Doors	Part Number	Shape	Port Quantity		Connector Type			
	01-001-00-0001	Round	3-Port Door		M36 Connectors			
	01-001-00-0002	Round	3-Port Door		SLIMLINE			
Grommets	Part Number	Port Type	Size (in)	Size (mm)	Part Number	Port Type	Size (in)	Size (mm)
	01-004-09-0001	M36	0.000"	0.000	01-004-09-0020	SLIMLINE	0.125"	3.175
	01-004-09-0002	M36	0.125"	3.175	01-004-09-0021	SLIMLINE	0.250"	6.350
	01-004-09-0003	M36	0.250"	6.350	01-004-09-0022	SLIMLINE	0.375"	9.525
	01-004-09-0004	M36	0.375"	9.525	01-004-09-0023	SLIMLINE	0.500"	12.700
	01-004-09-0005	M36	0.500"	12.700	01-004-09-0024	SLIMLINE	0.625"	15.875
	01-004-09-0006	M36	0.625"	15.875	01-004-09-0025	SLIMLINE	0.750"	19.050
	01-004-09-0007	M36	0.750"	19.050	01-004-09-0026	SLIMLINE	0.825"	20.950
	01-004-09-0008	M36	0.875"	22.225	01-004-09-0027	SLIMLINE	1.000"	25.400
	01-004-09-0009	M36	1.000"	25.400				
Assorted	Part Number	Description			Part Number	Description		
	01-200-11-0001	Desiccant Canister						



GEO

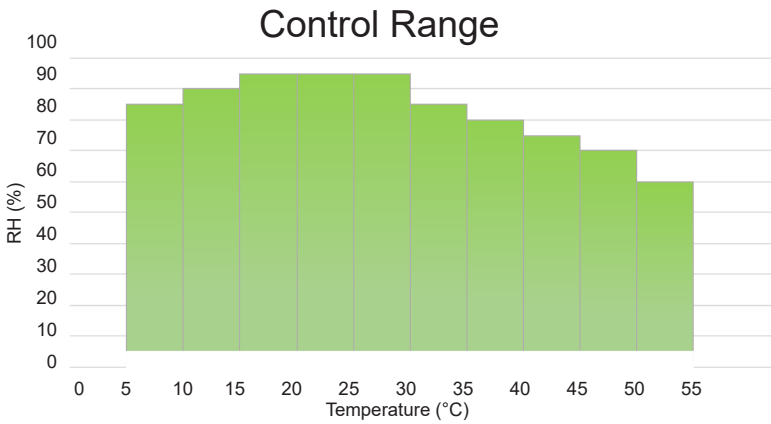
Calibration

Model 2000 SH

PRODUCT OVERVIEW

GENERAL SPECIFICATIONS

CALIBRATION TO (17025 TRACEABLE TO NIST)	TRANSFER STANDARD	No Charge	
	CERTIFICATE	17025 Validation (Additional Fees Apply)	
OPERATING AMBIENT CONDI- TIONS	TEMPERATURE	18 °C to 28 °C	
	HUMIDITY	Up to 80 % RH	
STORAGE CONDITIONS	TEMPERATURE	-20 °C to 50 °C	
	HUMIDITY	0 % to 95 % RH (non-condensing)	
ALTITUDE	2000 m		
CALIBRATION SYSTEM ACCURACY	TEMPERATURE	± 0.10 °C Or Better	Typically ± 0.05 °C *Based on Probe Accuracy
	HUMIDITY	± 1.00 % RH Or Better	Specially tuned systems can be as good as ± 0.60 % *Based on Probe Accuracy
	CONTROLLER TYPE	PID Controller	
UNIFORMITY	TEMPERATURE	0.10 °C Or Better	Typically ± 0.05 °C
	HUMIDITY	0.30 % RH @ 18 °C to 28 °C Or Better	Typically ± 0.25 %
STABILITY	TEMPERATURE	0.05 °C	
	HUMIDITY	0.15 % RH @ 18 °C to 28 °C	
WARM-UP PERIOD	AMBIENT CONDITIONS	30 Minutes Maximum	
	COLD	30 Minutes	
RESOLUTION	DISPLAY	Temperature	0.01 °C
		Humidity	0.01 % RH
		Dew Point	0.01 °C (Calculated)
	USB	Temperature	0.01 °C
		Humidity	0.01 % RH



RAMP / SOAK RATE OF CHANGE			
*Depends on ambient and desiccant conditions			
TEMPERATURE	High → Low	1.50 °C / minute *Typical	
	Low → High	5.00 °C / minute *Typical	
HUMIDITY	High → Low	5.00 % RH / minute *Typical	
	Low → High	10.00 % RH / minute *Typical	
CONTROL RANGE			
TEMPERATURE	5 °C to 55 °C		
HUMIDITY@ 18°C	5 % to 95 % RH	HUMIDITY@ 35°C	5 % to 80 % RH
HUMIDITY@ 23°C	5 % to 95 % RH	HUMIDITY@ 40°C	5 % to 75 % RH
HUMIDITY@ 30°C	5 % to 85 % RH	HUMIDITY@ 50°C	5 % to 60 % RH

CONSUMABLES

WATER	RESERVOIR	200 ml
	SPILL RESISTANT	Yes
	REQUIRED FLUID	Distilled Water Only
	EST REFILL PERIOD	15 Days to 1 Month (Typical) *Depends on Usage
	FILL INDICATOR	Floating Ball
DESICCANT	TYPE	Molecular Sieve
	REPLACEMENT	When Indicating Desiccant is 3/4 Used
	REPLACEMENT FREQUENCY	Depends Entirely on User Workload
	LOCATION	Left Side Mounted
	FASTENER	Desiccant Mounting Bracket Provided
RECALIBRATION	FREQUENCY	Depends on User Uncertainty Requirements Once Per Year Recommended

**Information subject to change, please visit our website for updates at www.geocalibration.com.

MECHANICAL

	Measurement Type	Width	Depth	Height
GENERATOR DIMENSIONS	Metric	46.00 cm	38.50 cm	23.50 cm
	English	18.11 in	15.16 in	9.26 in
	Measurement Type	Diameter	Depth	
CHAMBER DIMENSIONS	Metric	14.50 cm	20.00 cm	
	English	5.71 in	7.87 in	
	Measurement Type	Diameter	Depth	
WORKING DIMENSIONS AND VOLUME	Metric	12.50 cm	10.90 cm	
	English	4.92 in	4.29 in	
	Volume	1.5 Liter Effective Working Volume		
WEIGHT	Unit Only	Metric	10.0 kg	
		English	22.05 lb	
POWER SUPPLY	Power Supply	12 Volt DC @ 1A		
STANDARD PORT QUANTITY	Depends on doors	Availability: 6 Ports, 5 Ports, 4 Ports, 2 Ports		
CHILLED MIRROR PORTS	In and Out			
		Probe Range	Actual Unit Range	
PROBE ANALOG OUTPUTS AVAILABLE	0 - 1 Volt	Temperature	- 40.00 to + 60.00 °C	+ 5.00 to + 60.00 °C
		Humidity	0 to + 100.00 %	+ 5.00 to + 95.00 %

Ordering Information

Standard Supply Package

*Customization is Available

* Complete Accessory List is Available at www.geocalibration.com

Square 6-Port Door	Desiccant Canister	Fill Syringe
7 Grommets (1/8", 1/4", 3/8", 1/2", 5/8", 3/4", 7/8")	Mains Power Cord	Calibration Documents

Accessories

Doors	Shape	Port Quantity		Connector Type		Part Number		
	Square / Round	6-Port Door		M36 Connectors		01-001-00-0017 / 01-001-00-0018		
	Square / Round	4-Port Door		M36 Connectors		01-001-00-0003 / 01-001-00-0004		
	Square / Round	4-Port Door		SLIMLINE		01-001-00-0024 / 01-001-00-0025		
	Square	4-Port Chilled MirrorDoor		M36 Connectors		01-001-00-0010		
	Square	2-Port Door		M36 Connectors		01-001-00-0028		
Grommets	Port Type	Size (in)	Size (mm)	Part Number	Port Type	Size (in)	Size (mm)	Part Number
	M36	0.000"	0.000	01-004-09-0001	SLIMLINE	0.125"	3.175	01-004-09-0020
	M36	0.125"	3.175	01-004-09-0002	SLIMLINE	0.250"	6.350	01-004-09-0021
	M36	0.250"	6.350	01-004-09-0003	SLIMLINE	0.375"	9.525	01-004-09-0022
	M36	0.375"	9.525	01-004-09-0004	SLIMLINE	0.500"	12.700	01-004-09-0023
	M36	0.500"	12.700	01-004-09-0005	SLIMLINE	0.625"	15.875	01-004-09-0024
	M36	0.625"	15.875	01-004-09-0006	SLIMLINE	0.750"	19.050	01-004-09-0025
	M36	0.750"	19.050	01-004-09-0007	SLIMLINE	0.825"	20.950	01-004-09-0026
	M36	0.875"	22.225	01-004-09-0008	SLIMLINE	1.000"	25.400	01-004-09-0027
	M36	1.000"	25.400	01-004-09-0009				
Expansion Chamber	Description	Width	Depth	Height	Part Number			
	Standard Expansion Chamber	220mm	286mm	345mm	01-054-00-0000			
Additional	Description	Part Number	Note:					
	Desiccant Canister w/ Material	01-200-11-0001	(Various Desiccant Canisters Available For This Unit.)					
	Chamber Insert	01-200-08-0025						

**Information subject to change, please visit our website for updates at www.geocalibration.com.



GEO **Calibration**

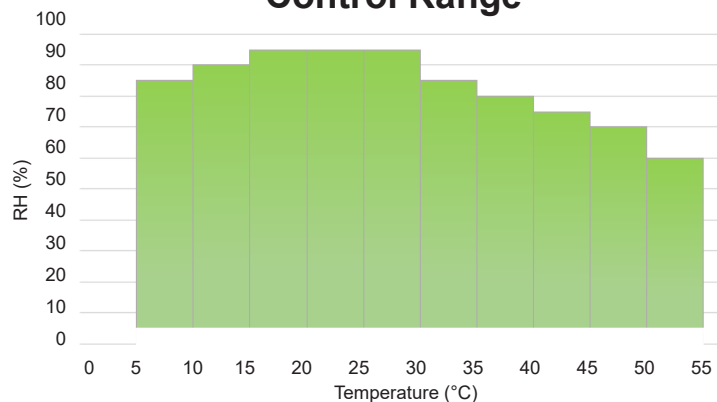
Model 2000 SHR

PRODUCT OVERVIEW

GENERAL SPECIFICATIONS

CALIBRATION TO (17025 TRACEABLE TO NIST)	TRANSFER STANDARD	No Charge		
	CERTIFICATE	17025 Validation (Additional Fees Apply)		
OPERATING AMBIENT CONDI- TIONS	TEMPERATURE	18 °C to 28 °C		
	HUMIDITY	Up to 80 % RH		
STORAGE CONDITIONS	TEMPERATURE	-20 °C to 50 °C		
	HUMIDITY	0 % to 95 % RH (non-condensing)		
ALTITUDE	2000 m			
CALIBRATION SYSTEM ACCURACY	TEMPERATURE	± 0.10 °C Or Better	Typically ± 0.05 °C	*Based on Probe Accuracy
	HUMIDITY	± 1.00 % RH Or Better	Specially tuned systems can be as good as ± 0.60 %	*Based on Probe Accuracy
	CONTROLLER TYPE	PID Controller		
UNIFORMITY	TEMPERATURE	0.10 °C Or Better	Typically ± 0.05 °C	
	HUMIDITY	0.30 % RH @ 18 °C to 28 °C Or Better		
STABILITY	TEMPERATURE	0.05 °C		
	HUMIDITY	0.15 % RH @ 18 °C to 28 °C		
WARM-UP PERIOD	AMBIENT CONDITIONS	30 Minutes Maximum		
	COLD	30 Minutes		
RESOLUTION	DISPLAY	Temperature	0.01 °C	
		Humidity	0.01 % RH	
		Dew Point	0.01 °C (Calculated)	
	USB	Temperature	0.01 °C	
		Humidity	0.01 % RH	

Control Range



RAMP / SOAK RATE OF CHANGE

*Depends on ambient and desiccant conditions

TEMPERATURE	High → Low	1.50 °C / minute *Typical
	Low → High	5.00 °C / minute *Typical
HUMIDITY	High → Low	5.00 % RH / minute *Typical
	Low → High	10.00 % RH / minute *Typical

CONTROL RANGE

TEMPERATURE	5 °C to 55 °C		
HUMIDITY@ 18°C	5 % to 95 % RH	HUMIDITY@ 35°C	5 % to 80 % RH
HUMIDITY@ 23°C	5 % to 95 % RH	HUMIDITY@ 40°C	5 % to 75 % RH
HUMIDITY@ 30°C	5 % to 85 % RH	HUMIDITY@ 50°C	5 % to 60 % RH

CONSUMABLES

WATER	RESERVOIR	200 ml
	SPILL RESISTANT	Yes
	REQUIRED FLUID	Distilled Water Only
	EST. REFILL PERIOD	15 Days to 1 Month (Typical) *Depends on Usage
	FILL INDICATOR	Floating Ball
DESICCANT	TYPE	Molecular Sieve
	REPLACEMENT	When Indicating Desiccant is 3/4 Used
	REPLACEMENT FREQUENCY	Depends Entirely on User Workload
	LOCATION	Left Side Mounted
	FASTENER	Desiccant Mounting Bracket Provided
RECALIBRATION	FREQUENCY	Depends on User Uncertainty Requirements Once Per Year Recommended

**Information subject to change, please visit our website for updates at www.geocalibration.com.

MECHANICAL

	Measurement Type	Width	Depth	Height
GENERATOR DIMENSIONS	Metric	55.33 cm	40.65 cm	24.65 cm
	English	21.78 in	16.02 in	9.70 in
	Measurement Type	Diameter	Depth	
CHAMBER DIMENSIONS	Metric	14.50 cm	20.00 cm	
	English	5.71 in	7.87 in	
	Measurement Type	Diameter	Depth	
WORKING DIMENSIONS AND VOLUME	Metric	12.50 cm	10.90 cm	
	English	4.92 in	4.29 in	
	Volume	1.5 Liter Effective Working Volume		
WEIGHT	Unit Only	Metric	15.5 kg	
		English	34.0 lb	
POWER SUPPLY	Power Supply	12 Volt DC @ 1A		
STANDARD PORT QUANTITY	Depends on doors	Availability: 6 Ports, 5 Ports, 4 Ports, 2 Ports		
CHILLED MIRROR PORTS	In and Out			
		Probe Range	Actual Unit Range	
PROBE ANALOG OUTPUTS AVAILABLE	0 - 1 Volt	Temperature	- 40.00 to + 60.00 °C	+ 5.00 to + 60.00 °C
		Humidity	0 to + 100.00 %	+ 5.00 to + 95.00 %

Ordering Information

Standard Supply Package

*Customization is Available

* Complete Accessory List is Available at www.geocalibration.com

Square 5-Port Door	Desiccant Canister	Fill Syringe
7 Grommets (1/8", 1/4", 3/8", 1/2", 5/8", 3/4", 7/8")	Mains Power Cord	Calibration Documents

Accessories

Doors	Shape	Port Quantity	Connector Type	Part Number				
	Square / Round	6-Port Door	M36 Connectors	01-001-00-0017 / 01-001-00-0018				
	Square	5-Port Door	M36 Connectors	01-001-00-0013				
	Square / Round	4-Port Door	M36 Connectors	01-001-00-0003 / 01-001-00-0004				
	Square / Round	4-Port Door	SLIMLINE	01-001-00-0024 / 01-001-00-0025				
	Square	4-Port Chilled MirrorDoor	M36 Connectors	01-001-00-0010				
	Square	2-Port Door	M36 Connectors	01-001-00-0028				
Grommets	Port Type	Size (in)	Size (mm)	Part Number	Port Type	Size (in)	Size (mm)	Part Number
	M36	0.000"	0.000	01-004-09-0001	SLIMLINE	0.125"	3.175	01-004-09-0020
	M36	0.125"	3.175	01-004-09-0002	SLIMLINE	0.250"	6.350	01-004-09-0021
	M36	0.250"	6.350	01-004-09-0003	SLIMLINE	0.375"	9.525	01-004-09-0022
	M36	0.375"	9.525	01-004-09-0004	SLIMLINE	0.500"	12.700	01-004-09-0023
	M36	0.500"	12.700	01-004-09-0005	SLIMLINE	0.625"	15.875	01-004-09-0024
	M36	0.625"	15.875	01-004-09-0006	SLIMLINE	0.750"	19.050	01-004-09-0025
	M36	0.750"	19.050	01-004-09-0007	SLIMLINE	0.825"	20.950	01-004-09-0026
	M36	0.875"	22.225	01-004-09-0008	SLIMLINE	1.000"	25.400	01-004-09-0027
	M36	1.000"	25.400	01-004-09-0009				
Expansion Chamber	Description			Width	Depth	Height	Part Number	
	Standard Expansion Chamber			220mm	286mm	345mm	01-054-00-0000	
Additional	Description		Part Number	Note:				
	Desiccant Canister w/ Material		01-201-11-0001	(Various Desiccant Canisters Available For This Unit.)				
	Chamber Insert		01-200-08-0025					

**Information subject to change, please visit our website for updates at www.geocalibration.com.



GEO **Calibration**

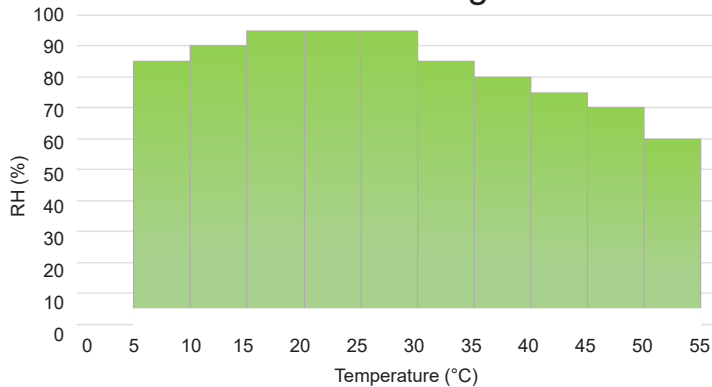
Model 2000 SP

PRODUCT OVERVIEW

GENERAL SPECIFICATIONS

CALIBRATION TO (17025 TRACEABLE TO NIST)	TRANSFER STANDARD	No Charge	
	CERTIFICATE	17025 Validation (Additional Fees Apply)	
OPERATING AMBIENT CONDI- TIONS	TEMPERATURE	18 °C to 28 °C	
	HUMIDITY	Up to 80 % RH	
STORAGE CONDITIONS	TEMPERATURE	-20 °C to 50 °C	
	HUMIDITY	0 % to 95 % RH (non-condensing)	
ALTITUDE	2000 m		
CALIBRATION SYSTEM ACCURACY	TEMPERATURE	± 0.10 °C Or Better	Typically ± 0.05 °C *Based on Probe Accuracy
	HUMIDITY	± 1.00 % RH Or Better	Specially tuned systems can be as good as ± 0.60 % *Based on Probe Accuracy
	CONTROLLER TYPE	PID Controller	
UNIFORMITY	TEMPERATURE	0.10 °C Or Better	Typically ± 0.05 °C
	HUMIDITY	0.30 % RH @ 18 °C to 28 °C Or Better Typically ± 0.25 %	
STABILITY	TEMPERATURE	0.05 °C	
	HUMIDITY	0.15 % RH @ 18 °C to 28 °C	
WARM-UP PERIOD	AMBIENT CONDITIONS	30 Minutes Maximum	
	COLD	30 Minutes	
RESOLUTION	DISPLAY	Temperature	0.01 °C
		Humidity	0.01 % RH
		Dew Point	0.01 °C (Calculated)
	USB	Temperature	0.01 °C
		Humidity	0.01 % RH

Control Range



RAMP / SOAK RATE OF CHANGE

*Depends on ambient and desiccant conditions

TEMPERATURE	High → Low	1.50 °C / minute *Typical
	Low → High	5.00 °C / minute *Typical
HUMIDITY	High → Low	5.00 % RH / minute *Typical
	Low → High	10.00 % RH / minute *Typical

CONTROL RANGE

TEMPERATURE	5 °C to 55 °C		
HUMIDITY@ 18°C	5 % to 95 % RH	HUMIDITY@ 35°C	5 % to 80 % RH
HUMIDITY@ 23°C	5 % to 95 % RH	HUMIDITY@ 40°C	5 % to 75 % RH
HUMIDITY@ 30°C	5 % to 85 % RH	HUMIDITY@ 50°C	5 % to 60 % RH

CONSUMABLES

WATER	RESERVOIR	200 ml
	SPILL RESISTANT	Yes
	REQUIRED FLUID	Distilled Water Only
	EST. REFILL PERIOD	15 Days to 1 Month (Typical) *Depends on Usage
	FILL INDICATOR	Floating Ball
DESICCANT	TYPE	Molecular Sieve
	REPLACEMENT	When Indicating Desiccant is 3/4 Used
	REPLACEMENT FREQUENCY	Depends Entirely on User Workload
	LOCATION	Left Side Mounted
	FASTENER	Desiccant Mounting Bracket Provided
RECALIBRATION	FREQUENCY	Depends on User Uncertainty Requirements Once Per Year Recommended

**Information subject to change, please visit our website for updates at www.geocalibration.com.

MECHANICAL

GENERATOR DIMENSIONS	Measurement Type	Width	Depth	Height
	Metric	55.33 cm	40.65 cm	24.65 cm
	English	21.78 in	16.02 in	9.70 in
CHAMBER DIMENSIONS	Measurement Type	Diameter	Depth	
	Metric	14.50 cm	20.00 cm	
	English	5.71 in	7.87 in	
WORKING DIMENSIONS AND VOLUME	Measurement Type	Diameter	Depth	
	Metric	12.50 cm	10.90 cm	
	English	4.92 in	4.29 in	
	Volume	1.5 Liter Effective Working Volume		
WEIGHT	Unit Only	Metric	15.5 kg	
		English	34.0 lb	
POWER SUPPLY	12 Volt DC @ 1A			
STANDARD PORT QUANTITY	Depends on doors	Availability: 6 Ports, 5 Ports, 4 Ports, 2 Ports		
CHILLED MIRROR PORTS	In and Out			
PROBE ANALOG OUTPUTS AVAILABLE	0 - 1 Volt		Probe Range	Actual Unit Range
		Temperature	- 40.00 to + 60.00 °C	+ 5.00 to + 60.00 °C
		Humidity	0 to + 100.00 %	+ 5.00 to + 95.00 %

Ordering Information

*Customization is Available

* Complete Accessory List is Available at www.geocalibration.com

Standard Supply Package

Square 6-Port Door	Desiccant Canister	Fill Syringe
7 Grommets (1/8", 1/4", 3/8", 1/2", 5/8", 3/4", 7/8")	Mains Power Cord	Calibration Documents

Accessories

Doors	Shape	Port Quantity		Connector Type	Part Number			
	Square / Round	6-Port Door		M36 Connectors	01-001-00-0017 / 01-001-00-0018			
	Square / Round	4-Port Door		M36 Connectors	01-001-00-0003 / 01-001-00-0004			
	Square / Round	4-Port Door		SLIMLINE	01-001-00-0024 / 01-001-00-0025			
	Square	4-Port Chilled MirrorDoor		M36 Connectors	01-001-00-0010			
	Square	2-Port Door		M36 Connectors	01-001-00-0028			
Grommets	Port Type	Size (in)	Size (mm)	Part Number	Port Type	Size (in)	Size (mm)	Part Number
	M36	0.000"	0.000	01-004-09-0001	SLIMLINE	0.125"	3.175	01-004-09-0020
	M36	0.125"	3.175	01-004-09-0002	SLIMLINE	0.250"	6.350	01-004-09-0021
	M36	0.250"	6.350	01-004-09-0003	SLIMLINE	0.375"	9.525	01-004-09-0022
	M36	0.375"	9.525	01-004-09-0004	SLIMLINE	0.500"	12.700	01-004-09-0023
	M36	0.500"	12.700	01-004-09-0005	SLIMLINE	0.625"	15.875	01-004-09-0024
	M36	0.625"	15.875	01-004-09-0006	SLIMLINE	0.750"	19.050	01-004-09-0025
	M36	0.750"	19.050	01-004-09-0007	SLIMLINE	0.825"	20.950	01-004-09-0026
	M36	0.875"	22.225	01-004-09-0008	SLIMLINE	1.000"	25.400	01-004-09-0027
	M36	1.000"	25.400	01-004-09-0009				
Expansion Chamber	Description			Width	Depth	Height	Part Number	
	Standard Expansion Chamber			220mm	286mm	345mm	01-054-00-0000	
Additional	Description			Part Number	Description			Part Number
	Desiccant Canister w/ Material			01-200-11-0001	Chamber Insert			01-200-08-0025
	Desiccant Clamp			01-200-01-0013				

**Information subject to change, please visit our website for updates at www.geocalibration.com.



GEO

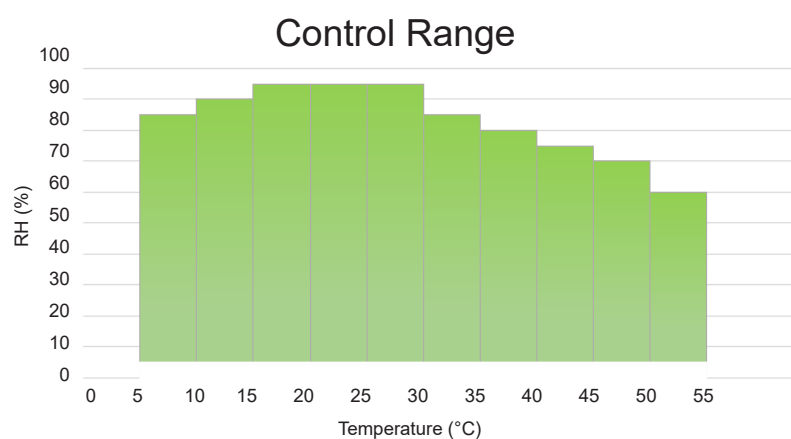
Calibration

Model 2015 TS

PRODUCT OVERVIEW

GENERAL SPECIFICATIONS

CALIBRATION TO (17025 TRACEABLE TO NIST)	TRANSFER STANDARD	No Charge	
	CERTIFICATE	17025 Validation (Additional Fees Apply)	
OPERATING AMBIENT CONDI- TIONS	TEMPERATURE	18 °C to 28 °C	
	HUMIDITY	Up to 80 % RH	
STORAGE CONDITIONS	TEMPERATURE	-20 °C to 50 °C	
	HUMIDITY	0 % to 95 % RH (non-condensing)	
ALTITUDE	2000 m		
CALIBRATION SYSTEM ACCURACY	TEMPERATURE	± 0.10 °C Or Better	Typically ± 0.05 °C *Based on Probe Accuracy
	HUMIDITY	± 1.00 % RH Or Better	Specially tuned systems can be as good as ± 0.60 % *Based on Probe Accuracy
	CONTROLLER TYPE	PID Controller	
UNIFORMITY	TEMPERATURE	0.10 °C Or Better	Typically ± 0.05 °C
	HUMIDITY	0.30 % RH @ 18 °C to 28 °C Or Better	Typically ± 0.25 %
STABILITY	TEMPERATURE	0.05 °C	
	HUMIDITY	0.15 % RH @ 18 °C to 28 °C	
WARM-UP PERIOD	AMBIENT CONDITIONS	30 Minutes Maximum	
	COLD	30 Minutes	
RESOLUTION	DISPLAY	Temperature	0.01 °C
		Humidity	0.01 % RH
		Dew Point	0.01 °C (Calculated)
	USB	Temperature	0.01 °C
		Humidity	0.01 % RH



RAMP / SOAK RATE OF CHANGE			
*Depends on ambient and desiccant conditions			
TEMPERATURE	High → Low	1.50 °C / minute *Typical	
	Low → High	5.00 °C / minute *Typical	
HUMIDITY	High → Low	5.00 % RH / minute *Typical	
	Low → High	10.00 % RH / minute *Typical	
CONTROL RANGE			
TEMPERATURE	5 °C to 55 °C		
HUMIDITY@ 18°C	5 % to 95 % RH	HUMIDITY@ 35°C	5 % to 80 % RH
HUMIDITY@ 23°C	5 % to 95 % RH	HUMIDITY@ 40°C	5 % to 75 % RH
HUMIDITY@ 30°C	5 % to 85 % RH	HUMIDITY@ 50°C	5 % to 60 % RH

CONSUMABLES

WATER	RESERVOIR	200 ml
	SPILL RESISTANT	Yes
	REQUIRED FLUID	Distilled Water Only
	EST. REFILL PERIOD	15 Days to 1 Month (Typical) *Depends on Usage
	FILL INDICATOR	Floating Ball
DESICCANT	TYPE	Molecular Sieve
	REPLACEMENT	When Indicating Desiccant is 3/4 Used
	REPLACEMENT FREQUENCY	Depends Entirely on User Workload
	LOCATION	Left Side Mounted
	FASTENER	Desiccant Mounting Bracket Provided
RECALIBRATION	FREQUENCY	Depends on User Uncertainty Requirements Once Per Year Recommended

**Information subject to change, please visit our website for updates at www.geocalibration.com.

MECHANICAL

		Measurement Type	Width	Depth	Height
GENERATOR DIMENSIONS		Metric	49.65 cm	43.54 cm	23.47 cm
		English	19.55 in	17.14 in	9.24 in
		Measurements Type	Diameter	Depth	
CHAMBER DIMENSIONS		Metric	14.50 cm	20.00 cm	
		English	5.71 in	7.87 in	
		Measurements Type	Diameter	Depth	
WORKING DIMENSIONS AND VOLUME		Metric	12.50 cm	10.90 cm	
		English	4.92 in	4.29 in	
		Volume	1.5 Liter Effective Working Volume		
WEIGHT	Unit Only		Metric	11.34 kg	
			English	25.00 lb	
POWER SUPPLY	Power Supply	12 Volt DC @ 1A			
STANDARD PORT QUANTITY	Depends on doors	Availability: 6 Ports, 5 Ports, 4 Ports, 2 Ports			
CHILLED MIRROR PORTS	In and Out				
			Probe Range	Actual Unit Range	
PROBE ANALOG OUTPUTS AVAILABLE	0 - 1 Volt		Temperature	- 40.00 to + 60.00 °C	+ 5.00 to + 60.00 °C
			Humidity	0 to + 100.00 %	+ 5.00 to + 95.00 %

Ordering Information

Standard Supply Package

*Customization is Available

* Complete Accessory List is Available at www.geocalibration.com

Square 6-Port Door	Desiccant Canister	Fill Syringe
7 Grommets (1/8", 1/4", 3/8", 1/2", 5/8", 3/4", 7/8")	Mains Power Cord	Calibration Documents

Accessories

Doors	Shape	Port Quantity		Connector Type	Part Number			
	Square / Round	6-Port Door		M36 Connectors	01-001-00-0017 / 01-001-00-0018			
	Square / Round	4-Port Door		M36 Connectors	01-001-00-0003 / 01-001-00-0004			
	Square / Round	4-Port Door		SLIMLINE	01-001-00-0024 / 01-001-00-0025			
	Square	4-Port Chilled MirrorDoor		M36 Connectors	01-001-00-0010			
	Square	2-Port Door		M36 Connectors	01-001-00-0028			
Grommets	Port Type	Size (in)	Size (mm)	Part Number	Port Type	Size (in)	Size (mm)	Part Number
	M36	0.000"	0.000	01-004-09-0001	SLIMLINE	0.125"	3.175	01-004-09-0020
	M36	0.125"	3.175	01-004-09-0002	SLIMLINE	0.250"	6.350	01-004-09-0021
	M36	0.250"	6.350	01-004-09-0003	SLIMLINE	0.375"	9.525	01-004-09-0022
	M36	0.375"	9.525	01-004-09-0004	SLIMLINE	0.500"	12.700	01-004-09-0023
	M36	0.500"	12.700	01-004-09-0005	SLIMLINE	0.625"	15.875	01-004-09-0024
	M36	0.625"	15.875	01-004-09-0006	SLIMLINE	0.750"	19.050	01-004-09-0025
	M36	0.750"	19.050	01-004-09-0007	SLIMLINE	0.825"	20.950	01-004-09-0026
	M36	0.875"	22.225	01-004-09-0008	SLIMLINE	1.000"	25.400	01-004-09-0027
	M36	1.000"	25.400	01-004-09-0009				
Expansion Chamber	Description			Width	Depth	Height	Part Number	
	Standard Expansion Chamber			220mm	286mm	345mm	01-054-00-0000	
Additional	Description		Part Number	Description			Part Number	
	Desiccant Canister w/ Material		01-200-11-0001	Chamber Insert			01-200-08-0025	
	Desiccant Clamp		01-200-01-0013					

**Information subject to change, please visit our website for updates at www.geocalibration.com.



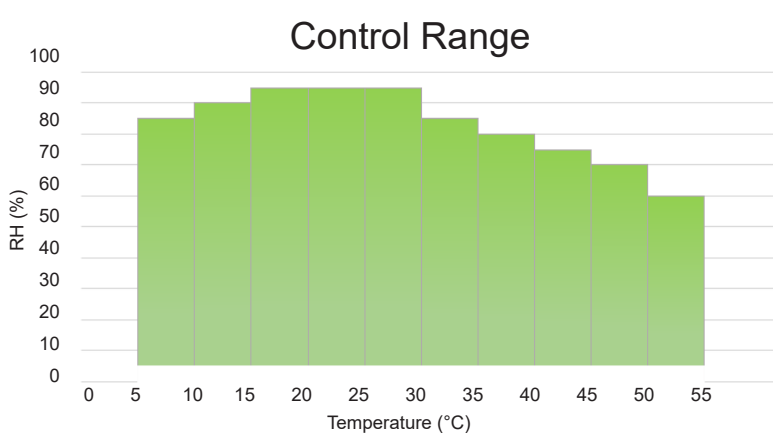
GEO **Calibration**

Model 2500 CM

PRODUCT OVERVIEW

GENERAL SPECIFICATIONS

CALIBRATION TO (17025 TRACEABLE TO NIST)	TRANSFER STANDARD	No Charge		
	CERTIFICATE	17025 Validation (Additional Fees Apply)		
OPERATING AMBIENT CONDI- TIONS	TEMPERATURE	18 °C to 28 °C		
	HUMIDITY	Up to 80 % RH		
STORAGE CONDITIONS	TEMPERATURE	-20 °C to 50 °C		
	HUMIDITY	0 % to 95 % RH (non-condensing)		
ALTITUDE	2000 m			
CALIBRATION SYSTEM ACCURACY	TEMPERATURE	± 0.10 °C Or Better	Typically ± 0.05 °C	*Based on Probe Accuracy
	HUMIDITY	± 1.00 % RH Or Better	Specially tuned systems can be as good as ± 0.60 %	*Based on Probe Accuracy
	CONTROLLER TYPE	PID Controller		
UNIFORMITY	TEMPERATURE	0.10 °C Or Better	Typically ± 0.05 °C	
	HUMIDITY	0.30 % RH @ 18 °C to 28 °C Or Better Typically ± 0.25 %		
STABILITY	TEMPERATURE	0.05 °C		
	HUMIDITY	0.15 % RH @ 18 °C to 28 °C		
WARM-UP PERIOD	AMBIENT CONDITIONS	30 Minutes Maximum		
	COLD	30 Minutes		
RESOLUTION	DISPLAY	Temperature	0.01 °C	
		Humidity	0.01 % RH	
		Dew Point	0.01 °C (Calculated)	
	USB	Temperature	0.01 °C	
		Humidity	0.01 % RH	



RAMP / SOAK RATE OF CHANGE			
*Depends on ambient and desiccant conditions			
TEMPERATURE	High → Low	1.50 °C / minute *Typical	
	Low → High	5.00 °C / minute *Typical	
HUMIDITY	High → Low	5.00 % RH / minute *Typical	
	Low → High	10.00 % RH / minute *Typical	
CONTROL RANGE			
TEMPERATURE	5 °C to 55 °C		
HUMIDITY@ 18°C	5 % to 95 % RH	HUMIDITY@ 35°C	5 % to 80 % RH
HUMIDITY@ 23°C	5 % to 95 % RH	HUMIDITY@ 40°C	5 % to 75 % RH
HUMIDITY@ 30°C	5 % to 85 % RH	HUMIDITY@ 50°C	5 % to 60 % RH

CONSUMABLES

WATER	RESERVOIR	200 ml
	SPILL RESISTANT	Yes
	REQUIRED FLUID	Distilled Water Only
	EST. REFILL PERIOD	15 Days to 1 Month (Typical) *Depends on Usage
	FILL INDICATOR	Floating Ball
DESICCANT	TYPE	Molecular Sieve
	REPLACEMENT	When Indicating Desiccant is 3/4 Used
	REPLACEMENT FREQUENCY	Depends Entirely on User Workload
	LOCATION	Front Mounted
	FASTENER	Desiccant Doors
RECALIBRATION	FREQUENCY	Depends on User Uncertainty Requirements Once Per Year Recommended

**Information subject to change, please visit our website for updates at www.geocalibration.com.

MECHANICAL

GENERATOR DIMENSIONS	Measurement Type	Width	Depth	Height
	Metric	46.82 cm	38.67 cm	23.47 cm
	English	18.43 in	15.22 in	9.24 in
CHAMBER DIMENSIONS	Measurement Type	Diameter	Depth	
	Metric	14.50 cm	20.00 cm	
	English	5.71 in	7.87 in	
WORKING DIMENSIONS AND VOLUME	Measurement Type	Diameter	Depth	
	Metric	12.50 cm	10.90 cm	
	English	4.92 in	4.29 in	
	Volume	1.5 Liter Effective Working Volume		
WEIGHT	Unit Only	Metric	14.06 kg	
		English	31.00 lb	
POWER SUPPLY	12 Volt DC @ 1A			
STANDARD PORT QUANTITY	Depends on doors	Availability: 6 Ports, 5 Ports, 4 Ports, 2 Ports		
CHILLED MIRROR PORTS	In and Out			
PROBE ANALOG OUTPUTS AVAILABLE	0 - 1 Volt	Probe Range	Actual Unit Range	
		Temperature	- 40.00 to + 60.00 °C	+ 5.00 to + 60.00 °C
		Humidity	0 to + 100.00 %	+ 5.00 to + 95.00 %

Ordering Information

Standard Supply Package

*Customization is Available

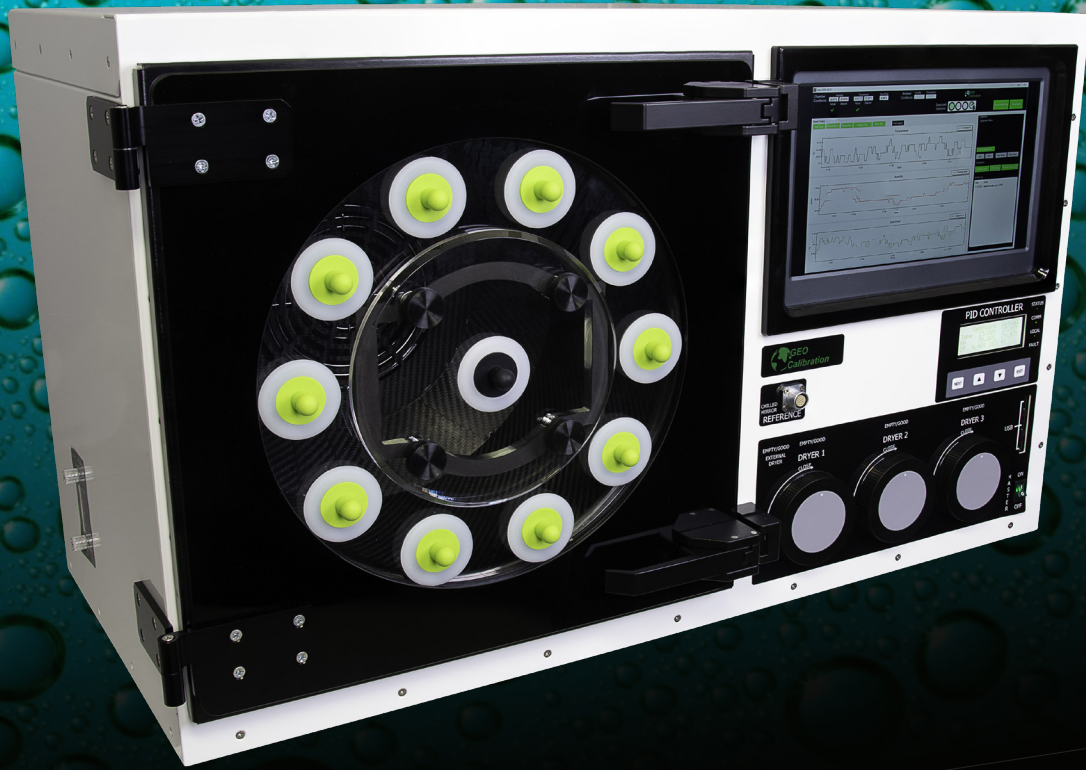
* Complete Accessory List is Available at www.geocalibration.com

Square 6-Port Door	Desiccant Canister	Fill Syringe
7 Grommets (1/8", 1/4", 3/8", 1/2", 5/8", 3/4", 7/8")	Mains Power Cord	Calibration Documents

Accessories

Doors	Shape	Port Quantity		Connector Type		Part Number		
	Square / Round	6-Port Door		M36 Connectors		01-001-00-0017 / 01-001-00-0018		
	Square / Round	4-Port Door		M36 Connectors		01-001-00-0003 / 01-001-00-0004		
	Square / Round	4-Port Door		SLIMLINE		01-001-00-0024 / 01-001-00-0025		
	Square	4-Port Chilled MirrorDoor		M36 Connectors		01-001-00-0010		
	Square	2-Port Door		M36 Connectors		01-001-00-0028		
Grommets	Port Type	Size (in)	Size (mm)	Part Number	Port Type	Size (in)	Size (mm)	Part Number
	M36	0.000"	0.000	01-004-09-0001	SLIMLINE	0.125"	3.175	01-004-09-0020
	M36	0.125"	3.175	01-004-09-0002	SLIMLINE	0.250"	6.350	01-004-09-0021
	M36	0.250"	6.350	01-004-09-0003	SLIMLINE	0.375"	9.525	01-004-09-0022
	M36	0.375"	9.525	01-004-09-0004	SLIMLINE	0.500"	12.700	01-004-09-0023
	M36	0.500"	12.700	01-004-09-0005	SLIMLINE	0.625"	15.875	01-004-09-0024
	M36	0.625"	15.875	01-004-09-0006	SLIMLINE	0.750"	19.050	01-004-09-0025
	M36	0.750"	19.050	01-004-09-0007	SLIMLINE	0.825"	20.950	01-004-09-0026
	M36	0.875"	22.225	01-004-09-0008	SLIMLINE	1.000"	25.400	01-004-09-0027
	M36	1.000"	25.400	01-004-09-0009				
Expansion Chamber	Description			Width	Depth	Height	Part Number	
	Standard Expansion Chamber			220mm	286mm	345mm	01-054-00-0000	
Additional	Description			Part Number	Note:			
	Desiccant Canister w/ Material Chamber Insert			01-250-11-0001 01-200-08-0025	(Various Desiccant Canisters Available For This Unit.)			

**Information subject to change, please visit our website for updates at www.geocalibration.com.



GEO **Calibration**

Hygro Max

PRODUCT OVERVIEW

GENERAL SPECIFICATIONS

CALIBRATION TO (17025 TRACEABLE TO NIST)	TRANSFER STANDARD	No Charge		
	CERTIFICATE	17025 Validation (Additional Fees Apply)		
OPERATING AMBIENT CONDITIONS	TEMPERATURE	18 °C to 28 °C		
	HUMIDITY	Up to 80 % RH		
CONTROLLED RANGE *WITH DRY NITROGEN OPTION ** WITH ULTRASONIC OPTION	TEMPERATURE	0 °C to 60 °C		
	HUMIDITY@18 °C	1 %* to 95 % RH	HUMIDITY@30 °C	1 %* to 80 % RH
	HUMIDITY@23 °C	1 %* to 99 %** RH	HUMIDITY@40 °C	1 %* to 60 % RH
	HUMIDITY@28 °C	1 %* to 95 % RH	HUMIDITY@50 °C	1 %* to 50 % RH
CALIBRATION SYSTEM ACCURACY	TEMPERATURE	± 0.1 °C	Typically ± 0.05 °C *Based on Probe Accuracy	
	HUMIDITY	± 0.50 % RH Or Better	Typically ± 0.30 % *Based on Probe Accuracy	
	CONTROLLER TYPE	PID Controller		
UNIFORMITY	TEMPERATURE	0.10 °C		
	HUMIDITY	0.30 % RH @ 23 °C		
STABILITY	TEMPERATURE	0.05 °C		
	HUMIDITY	0.10 % RH @ 23 °C		
RESOLUTION	DISPLAY	Temperature	0.01 °C	
		Humidity	0.01 % RH	
		Dew Point	0.01 °C (Calculated)	
RAMP / SOAK RATE OF CHANGE *Depends on ambient and desiccant conditions	TEMPERATURE	High → Low	0.50 °C / minute	*Typical (Based on Desiccant)
		Low → High	1.00 °C / minute	*Typical (Based on Desiccant)
	HUMIDITY	High → Low	1.00 % RH / minute	*Typical (Based on Desiccant)
		Low → High	2.50 % RH / minute	*Typical (Based on Desiccant)
*In high humidity environment, please set the temperature first. Once temperature settled, then set the humidity.				

CONSUMABLES

WATER	RESERVOIR	1.75 L		
	SPILL RESISTANT	Yes		
	REQUIRED FLUID	Distilled Water Only		
	EST. REFILL PERIOD	15 Days (Typical)	*Depends on Usage	
	FILL INDICATOR	Floating Ball		
DESICCANT	TYPE	Molecular Sieve		
	QUANTITY	3		
	USE	Auto Detection and Switch		
	REPLACEMENT	When Indicating Desiccant is 3/4 Used		
	REPLACEMENT FREQUENCY	Depends Entirely on User Workload		
	LOCATION	Front Mounted		
	FASTENER	Desiccant Doors		
RECALIBRATION	FREQUENCY	Depends on User Uncertainty Requirements Once Per Year Recommended		

**Information subject to change, please visit our website for updates at www.geocalibration.com.

MECHANICAL AND ELECTRICAL

BODY ENCLOSURE	Material	Powder Coated Aluminum		
	Measurement Type	Depth	Width	Height
GENERATOR DIMENSIONS	Metric	52.15 cm	86.50 cm	51.27 cm
	English	20.53 in	34.05 in	20.18 in
CHAMBER DIMENSIONS	Measurement Type	Depth	Diameter	
	Metric	23.01 cm	34.44 cm	
	English	9.06 in	13.55 in	
WORKING DIMENSIONS AND VOLUME	Measurement Type	Depth	Diameter	
	Metric	211.97 mm	32.03 cm	
	English	8.345 in	12.61 in	
	Volume	15.00 Liters		
CHAMBER ENCLOSURE	Material	Carbon Fiber with Aluminum/ Eva Insulation		
PROBE PORTS		12 Ports		
WEIGHT	Metric	50.8 kg		
	English	112.0 lb		
POWER SUPPLY	Universal 100 - 260 VAC - 50/60 Hz			
EXTERNAL INTERFACE	USB	Cable		

Ordering Information

*Customization is Available

* Complete Accessory List is Available at www.geocalibration.com

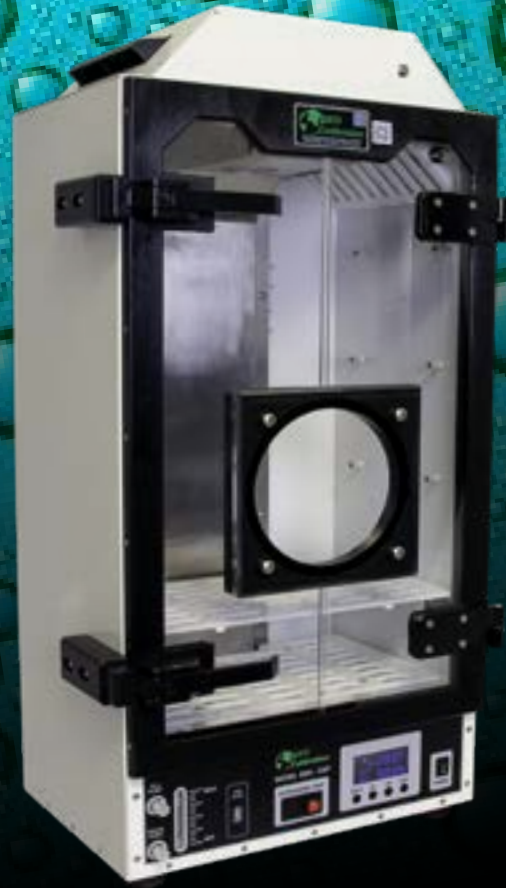
Standard Supply Package

12 Port Door	3 Desiccant Canisters	Fill Syringe
7 Grommets (1/8", 1/4", 3/8", 1/2", 5/8", 3/4", 7/8")	Mains Power Cord	Calibration Documents

Accessories

Doors	Shape	Port Quantity	Description	Connector Type	Part Number			
	Hinged	10-Port Door	Hygro Max 10 Port Door	Slimline Connectors	01-410-01-0015			
	Hinged	12-Port Door	Hygro Max 12 Port Door	Slimline Connectors	01-410-01-0029			
			Chilled Mirror Door Insert		01-410-01-0021			
Grommets	Port Type	Size (in)	Size (mm)	Part Number	Port Type	Size (in)	Size (mm)	Part Number
	M36	0.000"	0.000	01-004-09-0001	SLIMLINE	0.125"	3.175	01-004-09-0020
	M36	0.125"	3.175	01-004-09-0002	SLIMLINE	0.250"	6.350	01-004-09-0021
	M36	0.250"	6.350	01-004-09-0003	SLIMLINE	0.375"	9.525	01-004-09-0022
	M36	0.375"	9.525	01-004-09-0004	SLIMLINE	0.500"	12.700	01-004-09-0023
	M36	0.500"	12.700	01-004-09-0005	SLIMLINE	0.625"	15.875	01-004-09-0024
	M36	0.625"	15.875	01-004-09-0006	SLIMLINE	0.750"	19.050	01-004-09-0025
	M36	0.750"	19.050	01-004-09-0007	SLIMLINE	0.825"	20.950	01-004-09-0026
	M36	0.875"	22.225	01-004-09-0008	SLIMLINE	1.000"	25.400	01-004-09-0027
	M36	1.000"	25.400	01-004-09-0009				
Additional	Description	Part Number	Description	Part Number				
	Desiccant Canister w/ Material	01-250-11-0001	Chamber Insert	01-410-01-0003				
	External Desiccant	01-450-01-0034						

**Information subject to change, please visit our website for updates at www.geocalibration.com.



GEO
Calibration

Model 4000 EXP

PRODUCT OVERVIEW

GENERAL SPECIFICATIONS

CALIBRATION TO (17025 TRACEABLE TO NIST)	TRANSFER STANDARD	No Charge			
	CERTIFICATE	17025 Validation (Additional Fees Apply)			
CONTROLLED RANGE	TEMPERATURE	Ambient +/-5 °C			
	HUMIDITY@18 °C	10 % to 70 % RH			
	HUMIDITY@23 °C	10 % to 90 % RH			
	HUMIDITY@28 °C	10 % to 70 % RH			
CALIBRATION SYSTEM ACCU- RACY	TEMPERATURE	± 0.3 °C Or Better	*Based on Probe Accuracy		
	HUMIDITY	± 3.0 % RH Or Better	*Based on Probe Accuracy		
	CONTROLLER TYPE	PID Controller			
UNIFORMITY	TEMPERATURE	0.3 °C @ 23°C			
	HUMIDITY	3.0 % RH @ 23°C			
STABILITY	TEMPERATURE	0.2 °C			
	HUMIDITY	1 % RH @ 23°C			
RESOLUTION	DISPLAY	Temperature	0.1 °C		
		Humidity	0.1 % RH		
RAMP / SOAK RATE OF CHANGE <small>*Depends on ambient and desiccant conditions</small>	TEMPERATURE	High → Low	0.5 °C / minute	*Typical (Based on Desiccant)	
		Low → High	1 °C / minute	*Typical (Based on Desiccant)	
	HUMIDITY	High → Low	1 % RH / minute	*Typical (Based on Desiccant)	
		Low → High	1 % RH / minute	*Typical (Based on Desiccant)	

CONSUMABLES

WATER	RESERVOIR	600 ml		
	SPILL RESISTANT	No		
	REQUIRED FLUID	Distilled Water Only		
	EST. REFILL PERIOD	1 Week (Typical)	*Depends on Usage	
	FILL INDICATOR	Floating Ball		
DESICCANT	TYPE	Molecular Sieve		
	REPLACEMENT	When Indicating Desiccant is 3/4 Used		
	REPLACEMENT FREQUENCY	Depends Entirely on User Workload		
	LOCATION	External		
	FASTENER	Connect with Tube		
RECALIBRATION	FREQUENCY	Depends on User Uncertainty Requirements		
		Once Per Year Recommended		

**Information subject to change, please visit our website for updates at www.geocalibration.com.

MECHANICAL

BODY ENCLOSURE	Material	Powder Coated Aluminum		
	Measurement Type	Depth	Width	Height
GENERATOR DIMENSIONS	Metric	51.43 cm	41.76 cm	83.21 cm
	English	20.25 in	16.44 in	32.76 in
CHAMBER DIMENSIONS AND VOLUME	Measurement Type	Depth	Width	Height
	Metric	20.03 cm	31.77 cm	53.41 cm
	English	7.89 in	12.51 in	21.03 in
	Volume	30 Liter Effective Working Volume		
CHAMBER ENCLOSURE	Material	Insulated Acrylic		
WEIGHT	Metric	28 kg		
	English	61.75 lb		
POWER SUPPLY	Universal 100 - 260 VAC - 50/60 Hz			
EXTERNAL INTERFACE	USB	Cable		

Ordering Information

*Customization is Available

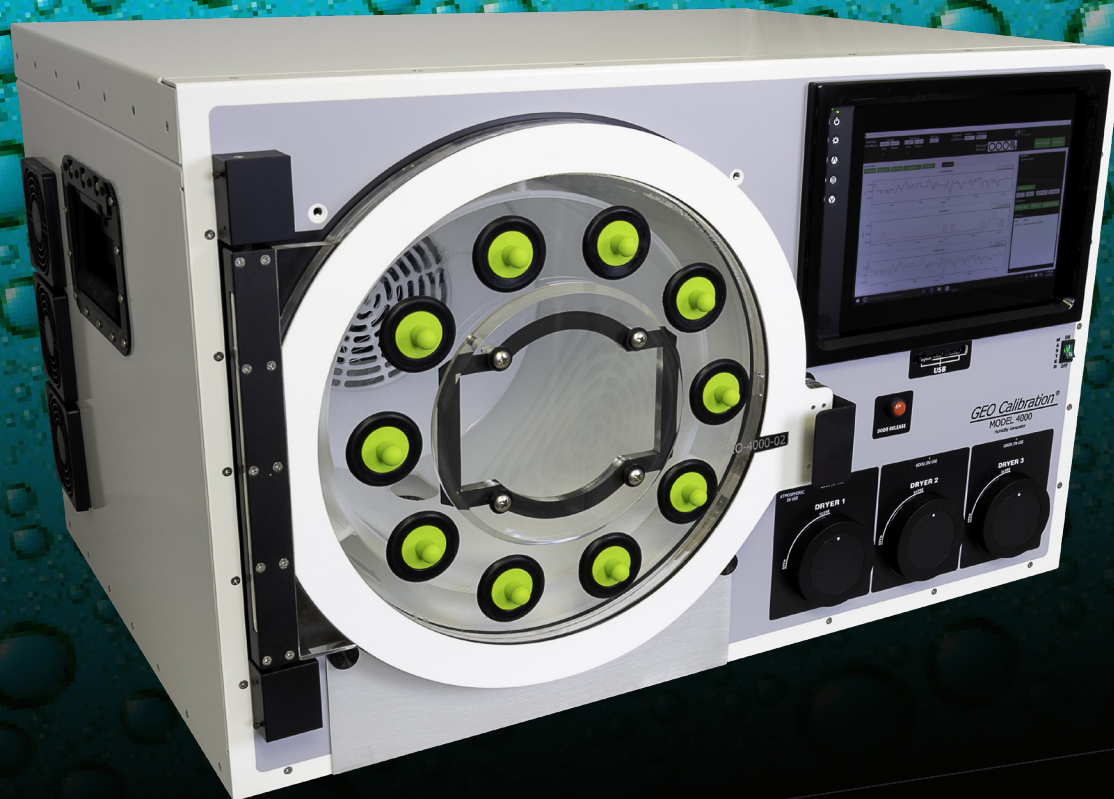
* Complete Accessory List is Available at www.geocalibration.com

Standard Supply Package

6 Port Door	External Desiccant Assembly	Fill Syringe
7 Grommets (1/8", 1/4", 3/8", 1/2", 5/8", 3/4", 7/8")	Mains Power Cord	Calibration Documents

Accessories

Doors	Shape	Port Quantity	Connector Type	Part Number				
	Square / Round	6-Port Door	M36 Connectors	01-001-00-0017 / 01-001-00-0018				
	Square / Round	4-Port Door	M36 Connectors	01-001-00-0003 / 01-001-00-0004				
	Square / Round	4-Port Door	SLIMLINE	01-001-00-0024 / 01-001-00-0025				
	Square	2-Port Door	M36 Connectors	01-001-00-0028				
Grommets	Port Type	Size (in)	Size (mm)	Part Number	Port Type	Size (in)	Size (mm)	Part Number
	M36	0.000"	0.000	01-004-09-0001	SLIMLINE	0.125"	3.175	01-004-09-0020
	M36	0.125"	3.175	01-004-09-0002	SLIMLINE	0.250"	6.350	01-004-09-0021
	M36	0.250"	6.350	01-004-09-0003	SLIMLINE	0.375"	9.525	01-004-09-0022
	M36	0.375"	9.525	01-004-09-0004	SLIMLINE	0.500"	12.700	01-004-09-0023
	M36	0.500"	12.700	01-004-09-0005	SLIMLINE	0.625"	15.875	01-004-09-0024
	M36	0.625"	15.875	01-004-09-0006	SLIMLINE	0.750"	19.050	01-004-09-0025
	M36	0.750"	19.050	01-004-09-0007	SLIMLINE	0.825"	20.950	01-004-09-0026
	M36	0.875"	22.225	01-004-09-0008	SLIMLINE	1.000"	25.400	01-004-09-0027
	M36	1.000"	25.400	01-004-09-0009				
Additional	Description			Part Number	Description			Part Number
	External Desiccant			01-450-01-0034	Shelf			01-450-01-0023
	Spring Loaded Accessory			01-450-01-0030				



GEO
Calibration

Model 4000

PRODUCT OVERVIEW

GENERAL SPECIFICATIONS

CALIBRATION TO (17025 TRACEABLE TO NIST)	TRANSFER STANDARD	No Charge		
	CERTIFICATE	17025 Validation (Additional Fees Apply)		
OPERATING AMBIENT CONDITIONS	TEMPERATURE	18 °C to 28 °C		
	HUMIDITY	Up to 80 % RH		
CONTROLLED RANGE	TEMPERATURE	5 °C to 55 °C		
	HUMIDITY@18 °C	5 % to 95 % RH	HUMIDITY@30 °C	5 % to 75 % RH
	HUMIDITY@23 °C	5 % to 95 % RH	HUMIDITY@40 °C	5 % to 60 % RH
	HUMIDITY@28 °C	5 % to 80 % RH	HUMIDITY@50 °C	5 % to 40 % RH
CALIBRATION SYSTEM ACCURACY	TEMPERATURE	±0.10 °C	*Based on Probe Accuracy	
	HUMIDITY	± 1.00 % RH Or Better	Typically +/- 0.50 %	*Based on Probe Accuracy
	CONTROLLER TYPE	PID Controller		
UNIFORMITY	TEMPERATURE	0.10 °C		
	HUMIDITY	0.30 % RH @ 23 °C		
STABILITY	TEMPERATURE	0.05 °C		
	HUMIDITY	0.15 % RH @ 23 °C		
RESOLUTION	DISPLAY	Temperature	0.01 °C	
		Humidity	0.01 % RH	
		Dew Point	0.01 °C (Calculated)	
RAMP / SOAK RATE OF CHANGE <small>*Depends on ambient and desiccant conditions</small>	TEMPERATURE	High → Low	0.50 °C / minute	*Typical (Based on Desiccant)
		Low → High	1.00 °C / minute	*Typical (Based on Desiccant)
	HUMIDITY	High → Low	1.00 % RH / minute	*Typical (Based on Desiccant)
		Low → High	5.00 % RH / minute	*Typical (Based on Desiccant)
*In high humidity environment, please set the temperature first. Once temperature settled, then set the humidity.				

CONSUMABLES

WATER	RESERVOIR	1.75 L		
	SPILL RESISTANT	Yes		
	REQUIRED FLUID	Distilled Water Only		
	EST. REFILL PERIOD	15 Days (Typical)	*Depends on Usage	
	FILL INDICATOR	Floating Ball		
DESICCANT	TYPE	Molecular Sieve		
	REPLACEMENT	When Indicating Desiccant is 3/4 Used		
	REPLACEMENT FREQUENCY	Depends Entirely on User Workload		
	LOCATION	Front Mounted		
	FASTENER	Desiccant Doors		
RECALIBRATION	FREQUENCY	Depends on User Uncertainty Requirements		
		Once Per Year Recommended		

MECHANICAL AND ELECTRICAL

BODY ENCLOSURE	Material	Powder Coated Aluminum		
GENERATOR DIMENSIONS	Measurement Type	Depth	Width	Height
	Metric	67.16 cm	77.30 cm	50.15 cm
	English	26.44 in	30.43 in	19.74 in
CHAMBER DIMENSIONS	Measurement Type	Depth	Diameter	
	Metric	32.50 cm	34.00 cm	
	English	12.79 in	13.38 in	
WORKING DIMENSIONS AND VOLUME	Measurement Type	Depth	Diameter	
	Metric	33.40 cm	29.00 cm	
	English	13.16 in	11.42 in	
	Volume	20 Liters		
CHAMBER ENCLOSURE	Material	Insulated Acrylic		
CHAMBER CAPACITY	38 Liters			
PROBE PORTS	10 Ports			
WEIGHT	Metric	45.36 kg		
	English	100.00 lb		
POWER SUPPLY	Universal 100 - 260 VAC - 50/60 Hz			
EXTERNAL INTERFACE	USB	Cable		

Ordering Information

Standard Supply Package

*Customization is Available

* Complete Accessory List is Available at www.geocalibration.com

Ten Port Door	3 Desiccant Canisters	Fill Syringe
7 Grommets (1/8", 1/4", 3/8", 1/2", 5/8", 3/4", 7/8")	Mains Power Cord	Calibration Documents

Accessories


Doors	Shape	Port Quantity	Description	Connector Type	Part Number			
	Hinged	10-Port Door	M4000 Standard Door	Slimline Connectors	01-400-01-0019			
	Hinged	10-Port Door	M4000 Chilled Mirror Door	Slimline Connectors Without Isolated Chamber Insert	01-400-01-0020			
			Chilled Mirror Door Insert		01-400-01-0021			
	Round		M4000 Chilled Mirror Door Cover		01-400-01-0022			
Grommets	Port Type	Size (in)	Size (mm)	Part Number	Port Type	Size (in)	Size (mm)	Part Number
	M36	0.000"	0.000	01-004-09-0001	SLIMLINE	0.125"	3.175	01-004-09-0020
	M36	0.125"	3.175	01-004-09-0002	SLIMLINE	0.250"	6.350	01-004-09-0021
	M36	0.250"	6.350	01-004-09-0003	SLIMLINE	0.375"	9.525	01-004-09-0022
	M36	0.375"	9.525	01-004-09-0004	SLIMLINE	0.500"	12.700	01-004-09-0023
	M36	0.500"	12.700	01-004-09-0005	SLIMLINE	0.625"	15.875	01-004-09-0024
	M36	0.625"	15.875	01-004-09-0006	SLIMLINE	0.750"	19.050	01-004-09-0025
	M36	0.750"	19.050	01-004-09-0007	SLIMLINE	0.825"	20.950	01-004-09-0026
	M36	0.875"	22.225	01-004-09-0008	SLIMLINE	1.000"	25.400	01-004-09-0027
	M36	1.000"	25.400	01-004-09-0009				
Additional	Description	Part Number	Description	Part Number				
	Desiccant Canister w/ Material	01-250-11-0001	Chamber Insert	01-400-01-0023				
	External Desiccant	01-450-01-0034	Shelf	01-400-07-0025				

**Information subject to change, please visit our website for updates at www.geocalibration.com.



GEO Calibration



Proudly Made in the USA 

Email: Sales@GeoCalibration.com Website: www.GeoCalibration.com

© 2019 GEO Calibration Inc. All rights reserved.

ACCESSORIES

PURCHASING GUIDE



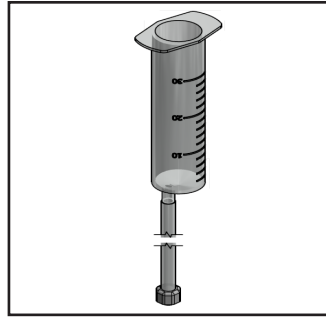
English

Deutsch

Français

GENERAL ACCESSORIES

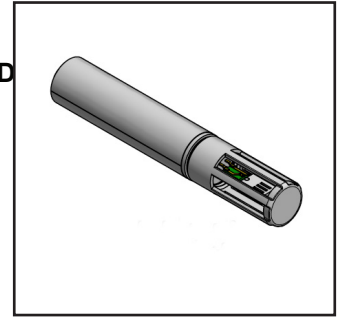
ITEM TYPE | SYRINGE



P/N: 01-200-36-0006

\$15.00 EACH

ITEM TYPE | ROTRONIC PROBE UNCALIBRATED



P/N: 01-200-36-0002

\$600.00 EACH

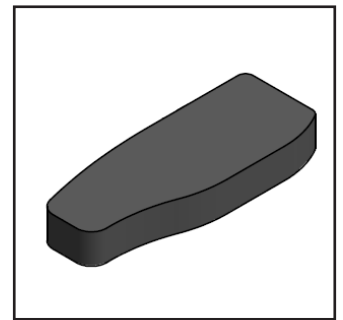
ITEM TYPE | AMPLIFIER CABLE



P/N: 01-200-36-0003

\$320.00 EACH

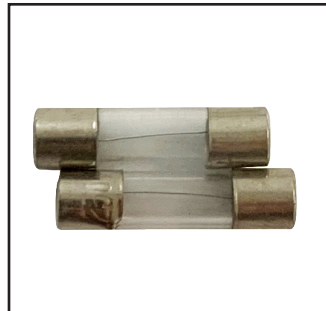
ITEM TYPE | ROTRONIC HANDHELD



P/N: 01-200-36-0010

\$1700.00 EACH

ITEM TYPE | FUSE SIZE 1 AMP



P/N: 01-200-85-0002

\$10.00 FOR 2 PCS

ITEM TYPE | FUSE SIZE 4 AMP



P/N: 01-200-85-0001

\$10.00 FOR 2 PCS

ITEM TYPE | CABLE APPLICATION PROBE



P/N: 01-200-36-0012

\$160.00 EACH

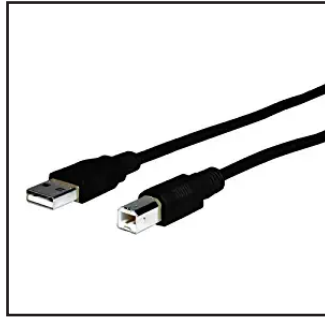
ITEM TYPE | CABLE APPLICATION USB A



P/N: 01-200-69-0001

\$10.00 EACH

ITEM TYPE | CABLE
 APPLICATION | USB B



P/N: 01-022-69-0001

\$15.00 EACH

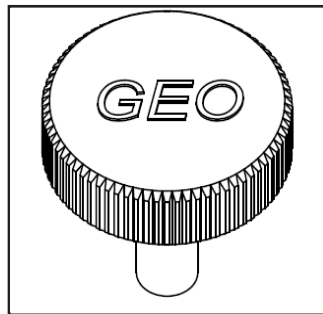
ITEM TYPE | CABLE



P/N: 01-200-30-0001

\$25.00 EACH

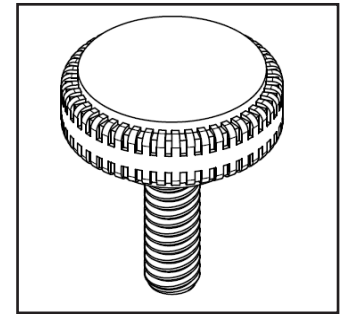
ITEM TYPE | KNOB
 SIZE | 0.750"
 APPLICABLE MODELS | 1000 SP,
 2000 SP,
 2000 SH,
 2015 TS,
 2000 SHR,
 4000



P/N: 01-001-66-0001

\$ 15.00 FOR 4 PCS

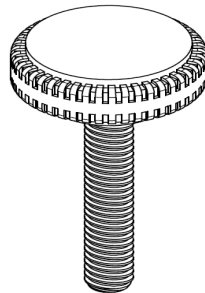
ITEM TYPE | SCREW
 SIZE | 0.750"
 APPLICABLE MODELS | 1000 SP,
 2000 SP,
 2000 SH,
 2015 TS,
 2000 SHR,
 4000



P/N: 01-001-66-0002

\$ 15.00 FOR 4 PCS

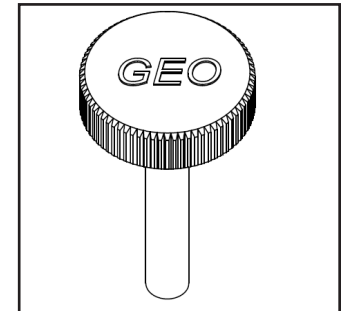
ITEM TYPE | SCREW
 SIZE | 1.500"
 APPLICABLE MODELS | 1000 SP,
 2000 SP,
 2000 SH,
 2015 TS,
 2000 SHR,
 4000



P/N: 01-001-66-0003

\$ 5.00 EACH

ITEM TYPE | KNOB
 SIZE | 1.500"
 APPLICABLE MODELS | 1000 SP,
 2000 SP,
 2000 SH,
 2015 TS,
 2000 SHR,
 4000



P/N: 01-001-66-0004

\$ 15.00 FOR 4 PCS

ITEM TYPE | CAP
 TYPE | NON-VENTED
 APPLICABLE MODELS | 1000 SP,
 2000 SP,
 2000 SH,
 2015 TS,
 2000 SHR,
 4000



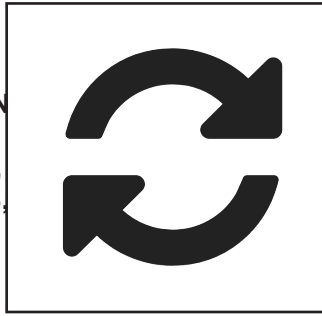
P/N: 01-200-36-0005

\$ 2.00 EACH

GENERAL ACCESSORIES

ITEM TYPE | SERVICE
TYPE | ISO 17025
ACCREDITED
RE-CALIBRATION

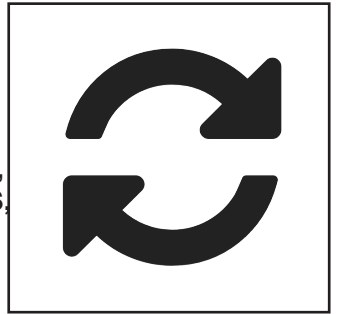
APPLICABLE | HYGRO-MINI,
MODELS | 1000 SP, 2000 SP,
2000 SH, 2015 TS,
2000 SHR,
4000 EXP



P/N: 01-999-99-0004 **\$ 1000.00** EACH

ITEM TYPE | SERVICE
TYPE | ISO 17025
ACCREDITED
CALIBRATION

APPLICABLE | HYGRO-MINI,
MODELS | 1000 SP, 2000 SP,
2000 SH, 2015 TS,
2000 SHR,
4000 EXP



P/N: 01-999-99-0001 **\$ 1000.00** EACH

ITEM TYPE | WARRANTY
TYPE | 3 YEAR EXT



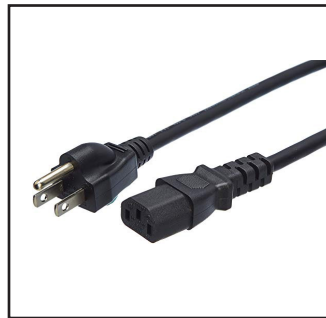
P/N: 01-999-99-0003 Price Varies from Different Models

ITEM TYPE | WARRANTY
TYPE | 2 YEAR EXT



P/N: 01-999-99-0002 Price Varies from Different Models

ITEM TYPE | CABLE
TYPE | AMERICAN



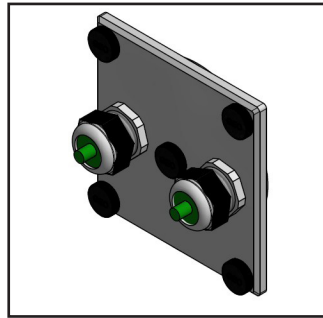
P/N: 01-200-46-0001 **\$10.00** EACH

ITEM TYPE | CABLE
TYPE | EUROPEAN



P/N: 01-200-46-0002 **\$20.00** EACH

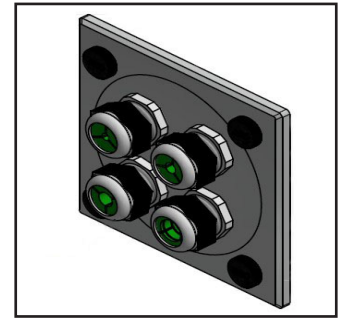
PORT TYPE | STANDARD
PORT QTY | 2
SHAPE | SQUARE
BUNGS | M36



P/N: 01-001-00-0028

\$300.00 EACH

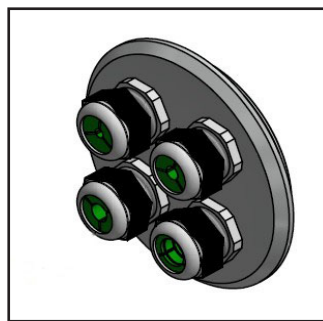
PORT TYPE | STANDARD
PORT QTY | 4
SHAPE | SQUARE
BUNGS | M36
GASKET | PRESS



P/N: 01-001-00-0003

\$300.00 EACH

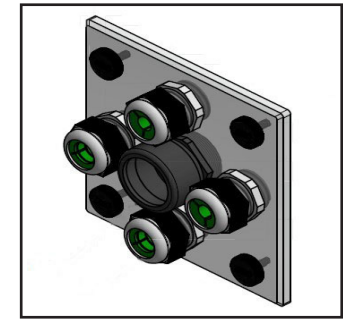
PORT TYPE | STANDARD
PORT QTY | 4
SHAPE | ROUND
BUNGS | M36
GASKET | PRESS



P/N: 01-001-00-0004

\$300.00 EACH

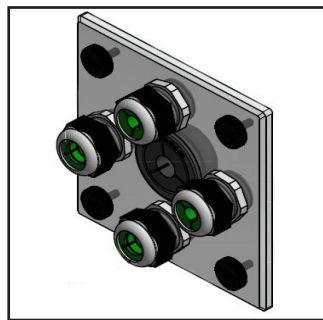
PORT TYPE | STANDARD
PORT QTY | 4
PORT TYPE | CHILLED
MIRROR
PORT QTY | 1
SHAPE | SQUARE
BUNGS | M36
PG36



P/N: 01-001-00-0010

\$300.00 EACH

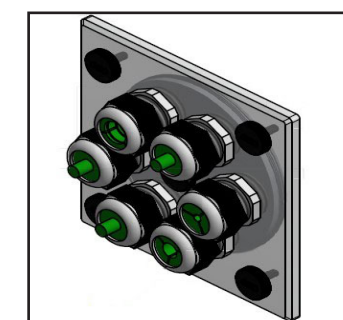
PORT TYPE | STANDARD
PORT QTY | 4
PORT TYPE | SLIMLINE
PORT QTY | 1
SHAPE | SQUARE
BUNGS | M36, PG36
ADAPTERS | PG36



P/N: 01-001-00-0011

\$300.00 EACH

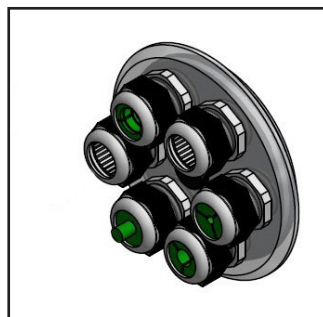
PORT TYPE | STANDARD
PORT QTY | 6
SHAPE | SQUARE
BUNGS | M36
GASKET | PRESSURE



P/N: 01-001-00-0017

\$300.00 EACH

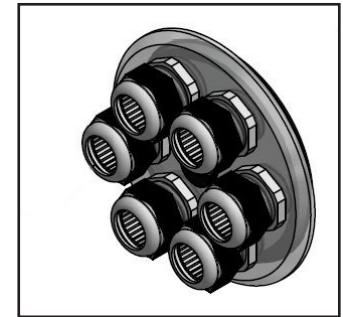
PORT TYPE | STANDARD
PORT QTY | 6
SHAPE | ROUND
BUNGS | M36
GASKET | PRESSURE



P/N: 01-001-00-0018

\$300.00 EACH

PORT TYPE | STANDARD
PORT QTY | 6
SHAPE | ROUND
TYPE | MAPPING
BUNGS | M36

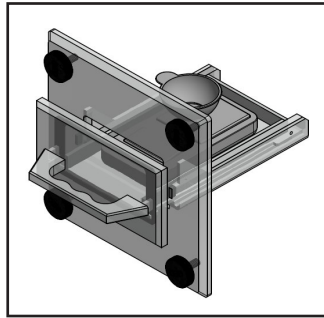


P/N: 01-001-00-0020

\$300.00 EACH

2000 SERIES DOORS

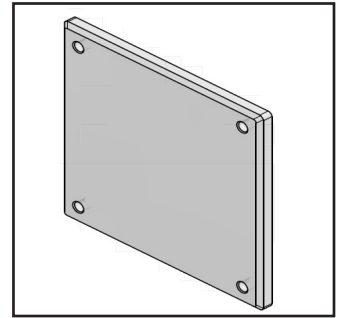
DOOR TYPE | SAMPLING
PORT QTY | 1
SHAPE | SQUARE
BUNGS | NONE
SCALE | INCLUDED



P/N: 01-001-00-0026

\$500.00 EACH

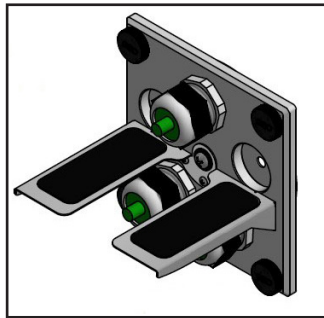
PORT TYPE | STANDARD
PORT QTY | 0
SHAPE | SQUARE
BUNGS | NONE



P/N: 02-350-07-0005

\$150.00 EACH

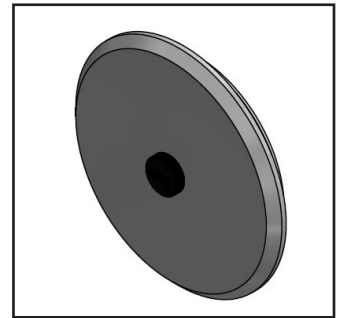
PORT TYPE | FLUKE 971
PORT QTY | 2
PORT TYPE | STANDARD
PORT QTY | 3
SHAPE | SQUARE
BUNGS | INCLUDED



P/N: 01-001-00-0029

\$300.00 EACH

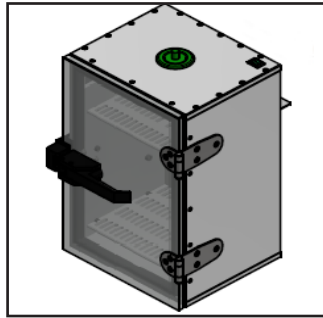
DOOR TYPE | COVER
PORT QTY | 0
SHAPE | ROUND
BUNGS | NONE



P/N: 01-001-00-0030

\$150.00 EACH

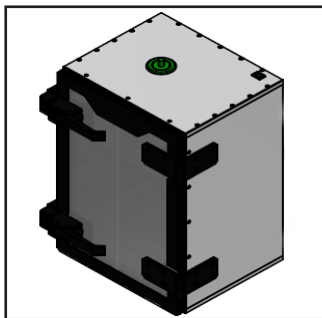
ITEM TYPE | EXPANSION
TYPE | CHAMBER
APPLICABLE | SMALL
MODELS | 2000 SP



	EXTERNAL(IN)	INTERNAL(IN)
DEPTH	7.91	6.69
WIDTH	9.00	7.11
HEIGHT	14.00	12.11

P/N: 01-050-00-0000 **\$2200.00** EACH

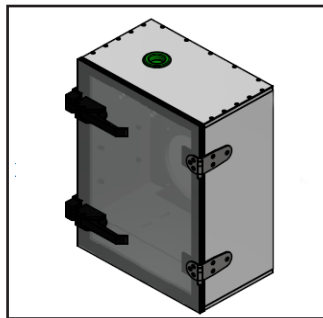
ITEM TYPE | EXPANSION
TYPE | CHAMBER
APPLICABLE | MEDIUM
MODELS | 2000 SP



	EXTERNAL(IN)	INTERNAL(IN)
DEPTH	7.91	6.69
WIDTH	11.00	8.98
HEIGHT	16.00	13.98

P/N: 01-051-00-0000 **\$2500.00** EACH

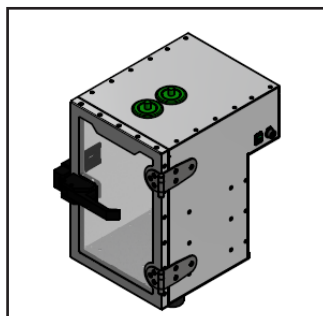
ITEM TYPE | EXPANSION
TYPE | CHAMBER
APPLICABLE | LARGE
MODELS | 2000 SP



	EXTERNAL(IN)	INTERNAL(IN)
DEPTH	7.91	6.69
WIDTH	13.00	11.00
HEIGHT	18.00	14.75

P/N: 01-052-00-0000 **\$3000.00** EACH

ITEM TYPE | EXPANSION
TYPE | CHAMBER
APPLICABLE | STANDARD
MODELS | 2000 SP

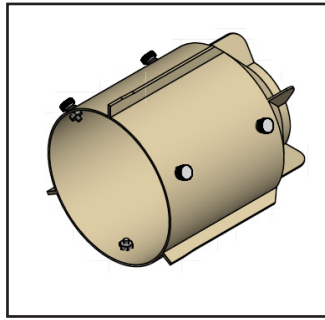


	EXTERNAL(IN)	INTERNAL(IN)
DEPTH	11.28	6.65
WIDTH	8.67	7.67
HEIGHT	13.58	11.60

P/N: 01-054-00-0000 **\$2500.00** EACH

ITEM TYPE
TYPE
APPLICABLE
MODELS

INSERT
STANDARD
2000 SP,
2000 SH,
2015 TS,
2000 SHR

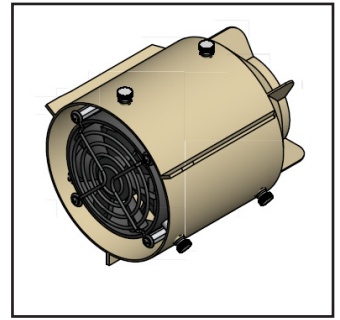


P/N: 01-200-08-0025

\$200.00 EACH

ITEM TYPE
TYPE
APPLICABLE
MODELS

INSERT
WITH FAN
2000 SP,
2000 SH,
2015 TS,
2000 SHR

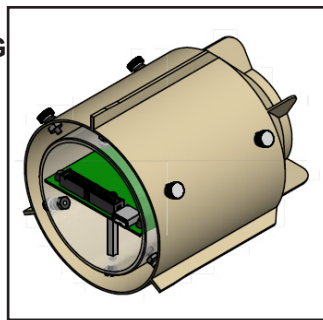


P/N: 01-200-08-0026

\$400.00 EACH

ITEM TYPE
TYPE
APPLICABLE
MODELS

INSERT
CALIBRATING
2000 SP,
2000 SH,
2015 TS,
2000 SHR

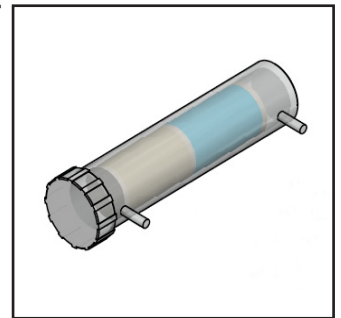


P/N: 01-200-08-0027

\$600.00 EACH

ITEM TYPE
TYPE
APPLICABLE
MODELS

DESICCANT
STANDARD
1000 SP,
2000 SP,
2000 SH,
2015 TS

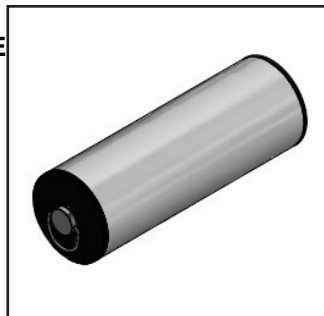


P/N: 01-200-11-0001

\$200.00 EACH

ITEM TYPE
TYPE
APPLICABLE
MODELS

DESICCANT
REFILLABLE
2000 SHR

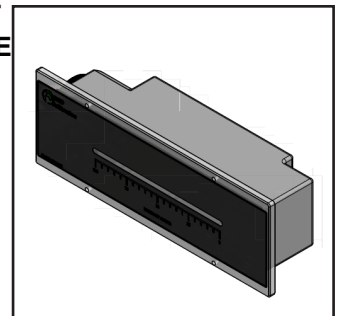


P/N: 01-201-11-0001

\$150.00 EACH

ITEM TYPE
TYPE
APPLICABLE
MODELS

DESICCANT
REFILLABLE
2000 SP

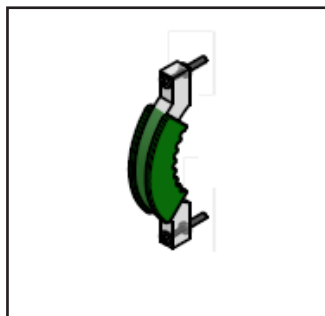


P/N: 01-200-11-0002

\$225.00 EACH

ITEM TYPE
APPLICABLE
MODELS

DESSICANT
CLAMP
2000 SP,
2015 TS



P/N: 01-200-01-0013

\$35.00 FOR 2 PCS

ITEM TYPE
APPLICABLE
MODELS

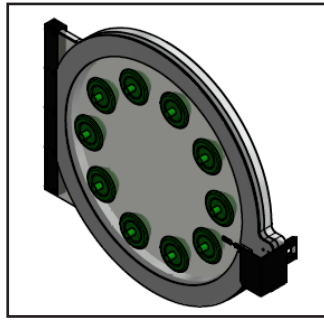
WRENCH
1000 SP,
2000 SP,
2000 SH,
2015 TS



P/N: 01-200-36-0011

\$25.00 EACH

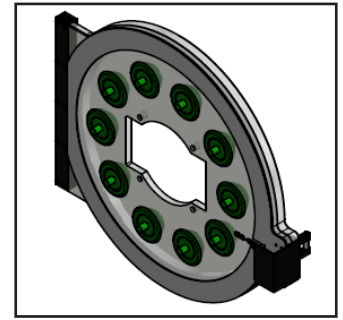
PORT TYPE | SLIMLINE
PORT QTY | 10
BUNGS | M36, PG36
ADAPTERS | PG36



P/N: 01-400-01-0019

\$875.00 EACH

PORT TYPE | SLIMLINE
PORT QTY | 10
BUNGS | M36, PG36
ADAPTERS | PG36



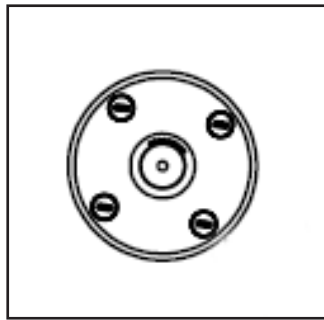
ASSEMBLY INCLUDES:

P/N: 01-400-01-0031

P/N: 01-400-01-0020

\$875.00 EACH

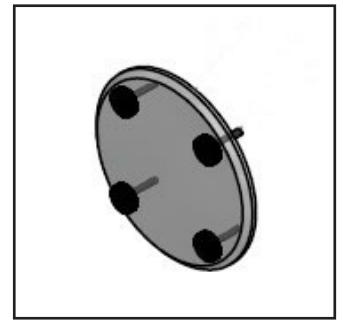
PORT TYPE | SLIMLINE
PORT QTY | 1
SHAPE | ROUND
BUNGS | M36, PG36
ADAPTERS | PG36



P/N: 01-001-01-0031

\$425.00 EACH

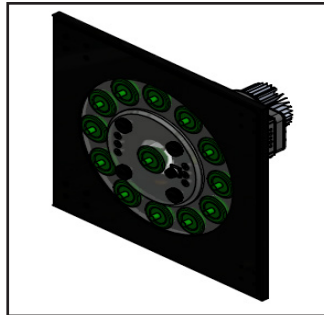
DOOR TYPE | COVER
PORT QTY | 0
SHAPE | ROUND



P/N: 01-400-01-0022

\$150.00 EACH

PORT TYPE | SLIMLINE
PORT QTY | 12
SHAPE | SQUARE
BUNGS | M36, PG36



P/N: 01-410-01-0029

\$875.00 EACH

ASSEMBLY INCLUDES:

P/N: 01-012-00-0000

P/N: 01-400-01-0021

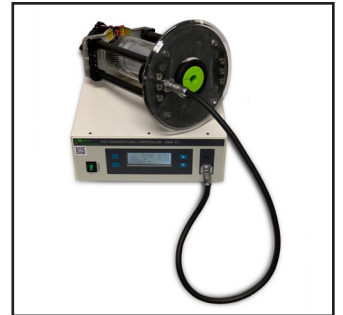
P/N: 01-011-30-0001

P/N: 01-400-01-0022

ASSEMBLY REQUIRES:

P/N: 01-400-01-0020

P/N: 01-400-01-0015



\$8000.00 EACH

PORT TYPE | SLIMLINE
PORT QTY | 1
SHAPE | ROUND
BUNGS | M36, PG36
ADAPTERS | PG36



P/N: 01-400-01-0021

\$5000.00 EACH

ITEM TYPE | CONTROLLER



P/N: 01-012-00-0000

\$4000.00 EACH

4000 SERIES ACCESSORIES

ITEM TYPE | CABLE



P/N: 01-011-30-0001

\$200.00 EACH

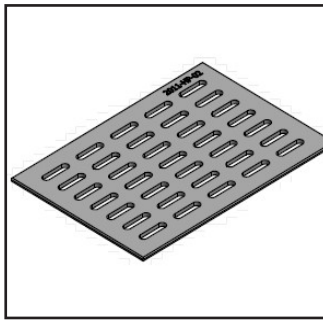
ITEM TYPE | INSERT
APPLICABLE | 4000
MODELS



P/N: 01-400-01-0023

\$1500.00 EACH

ITEM TYPE | SHELF
APPLICABLE | 4000
MODELS



P/N: 01-400-07-0025

\$150.00 EACH

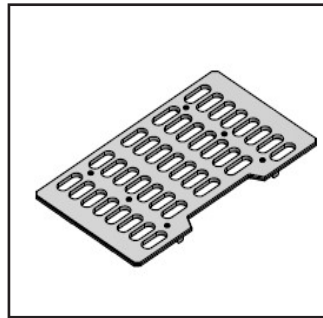
ITEM TYPE | DESICCANT
LOCATION | EXTERNAL
APPLICABLE | 4000
MODELS | 4000 EXP



P/N: 01-450-01-0034

\$400.00 EACH

ITEM TYPE | SHELF
APPLICABLE | 4000 EXP
MODELS



P/N: 01-450-01-0023

\$150.00 EACH

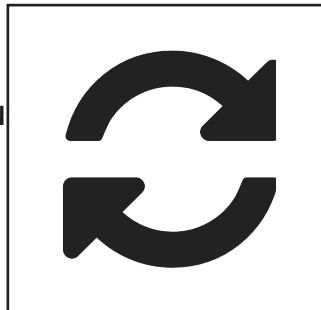
ITEM TYPE | DESICCANT
TYPE | STANDARD
APPLICABLE | 4000
MODELS



P/N: 01-250-11-0001

\$200.00 EACH

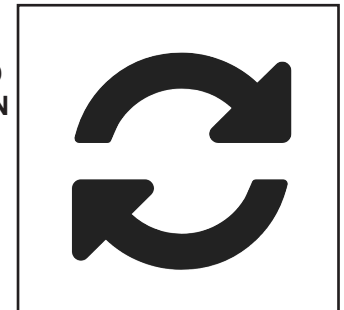
ITEM TYPE | SERVICE
TYPE | ISO 17025
ACCREDITED
RE-CALIBRATION
APPLICABLE | 4000
MODELS



P/N: 01-999-99-0006

\$ 3000.00 EACH

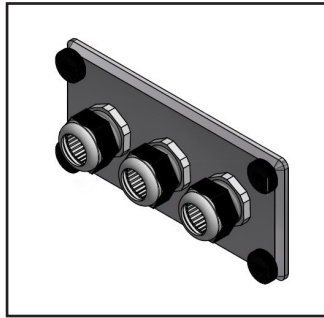
ITEM TYPE | SERVICE
TYPE | ISO 17025
ACCREDITED
CALIBRATION
APPLICABLE | 4000
MODELS



P/N: 01-999-99-0005

\$ 3000.00 EACH

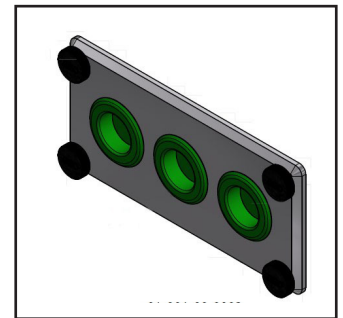
PORT TYPE STANDARD
PORT QTY 3
SHAPE SQUARE
BUNGS M36



P/N: 01-001-00-0001

\$300.00 EACH

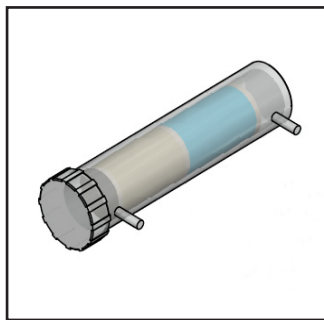
PORT TYPE SLIMLINE
PORT QTY 3
SHAPE SQUARE
BUNGS M36, PG36
ADAPTERS M36



P/N: 01-001-00-0002

\$300.00 EACH

ITEM TYPE DESICCANT
TYPE STANDARD
APPLICABLE MODELS 1000 SP,
2000 SP,
2000 SH,
2015 TS

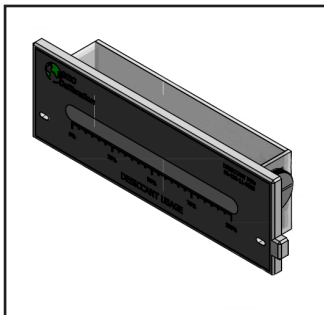


P/N: 01-200-11-0001

\$200.00 EACH

HYGROMINI
ACCESSORIES

ITEM TYPE DESICCANT
APPLICABLE HYGROMINI
MODELS



P/N: 01-020-11-0003

\$150.00 EACH

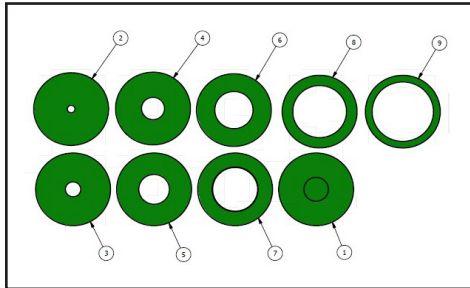
ITEM TYPE BATTERY
APPLICABLE HYGROMINI
MODELS



P/N: 01-022-36-0003

\$150.00 EACH

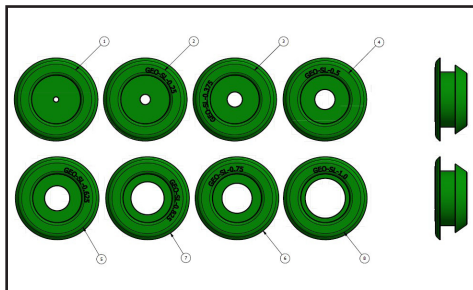
M 36



\$15.00 EACH

ITEM	TYPE	BUNG SIZE		PORT SIZE	
		mm	in	mm	in
01-004-09-0001	Regular M 36	31.00	1.22"	0.000	0.000
01-004-09-0002	Regular M 36			3.175	0.125"
01-004-09-0003	Regular M 36			6.350	0.250"
01-004-09-0004	Regular M 36			9.525	0.375"
01-004-09-0005	Regular M 36			12.700	0.500"
01-004-09-0006	Regular M 36			15.875	0.625"
01-004-09-0007	Regular M 36			19.050	0.750"
01-004-09-0008	Regular M 36			22.225	0.875"
01-004-09-0009	Regular M 36			25.400	1.000"

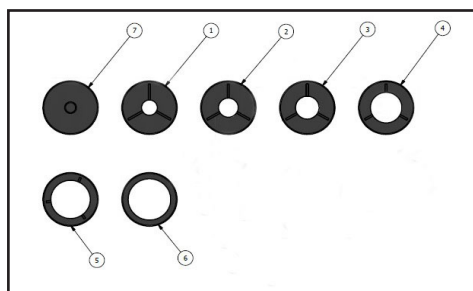
M 36



\$15.00 EACH

ITEM	TYPE	BUNG SIZE		PORT SIZE	
		mm	in	mm	in
01-004-09-0020	Slimline M 36	31.00	1.22"	3.175	0.125"
01-004-09-0021	Slimline M 36			6.350	0.250"
01-004-09-0022	Slimline M 36			9.525	0.375"
01-004-09-0023	Slimline M 36			12.700	0.500"
01-004-09-0024	Slimline M 36			15.875	0.625"
01-004-09-0025	Slimline M 36			19.050	0.750"
01-004-09-0026	Slimline M 36			22.225	0.875"
01-004-09-0027	Slimline M 36			25.400	1.000"

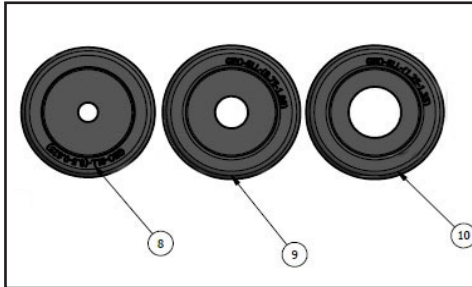
PG 36



\$15.00 EACH

ITEM	TYPE	BUNG SIZE		PORT SIZE	
		mm	in	mm	in
01-004-09-0034	Regular PG 36	44.45	1.75"	3.175	0.125"
01-004-09-0028	Regular PG 36			6.350	0.250"
01-004-09-0029	Regular PG 36			9.525	0.375"
01-004-09-0030	Regular PG 36			12.700	0.500"
01-004-09-0031	Regular PG 36			15.875	0.625"
01-004-09-0032	Regular PG 36			19.050	0.750"
01-004-09-0033	Regular PG 36			22.225	0.875"

PG 36



ITEM	TYPE	BUNG SIZE		PORT SIZE	
		mm	in	mm	in
01-004-09-0035	Slimline PG 36	44.45	1.75"	9.525	0.375"
01-004-09-0036	Slimline PG 36			15.875	0.625"
01-004-09-0037	Slimline PG 36			25.400	1.00"

\$15.00 EACH

PROBE PORT PLUG



\$6.00 FOR 4 PCS

ITEM	PORT SIZE	
	mm	in
01-004-09-0039	13.335	0.525"
01-004-09-0040	13.970	0.550"
01-004-09-0041	14.605	0.575"
01-004-09-0042	15.240	0.600"
01-004-09-0043	15.875	0.625"
01-004-09-0044	16.510	0.650"
01-004-09-0045	17.145	0.675"
01-004-09-0046	17.780	0.700"
01-004-09-0047	18.415	0.725"
01-004-09-0048	19.050	0.750"