

Start with One Expert

A Comprehensive Approach to
Sophisticated IoT Solutions





The Challenges of Business Success in the Internet of Things

The Internet of Things is positioned to see rapid acceleration in adoption, as organisations can see key benefits in risk mitigation, operational efficiency, and analytical insight. Current GSMA forecasts project that the global IoT revenue opportunity will exceed \$1.1 trillion by 2025¹.

IoT-enabled technologies continue to reshape all areas of the business world, transforming business models and enabling the creation of new products and services across virtually every industry.

Despite the rising interest and rapid pursuit of IoT, for most companies, the complexity of IoT continues to outpace its potential. Only 26 percent of companies have had an IoT initiative that they considered a complete success, and a mere 15 percent of business executives with IoT projects underway say they have been successful at all².

The complex ecosystem of IoT solutions needs to run optimally for the greatest success and ROI. Many organisations have tried to implement IoT only to realise the path forward is complicated and can be time-consuming or too costly. The best approach to IoT is through an expert enabler in IoT solutions.

**Only 26%
of companies**

have had an IoT initiative they considered a complete success, and a mere 15% of business executives with IoT projects underway say they have been successful at all.

.....

Sources:

1. <https://www.gsma.com/newsroom/press-release/new-gsma-study-operators-must-look-beyond-connectivity-to-increase-share/>

2. <https://newsroom.cisco.com/press-release-content?articleId=1847422>

Start with One IoT Provider for Deploying, Managing, and Scaling Your Solutions

The key to IoT starts with one decision – choosing a trusted, expert advisor. At KORE, we have nearly two decades of IoT knowledge and expertise, a global footprint, trusted carrier relationships, and powerful tools to make the most out of your IoT deployment.



We enable your IoT vision with seamless execution and a constant focus on maximising the return on your IoT investments. The KORE trusted advisor approach encompasses all of the key considerations and components for a successful IoT deployment, regardless of where you are in your IoT project.

IoT Strategy and Readiness

Serving as a trusted advisor, KORE starts with a comprehensive strategy to identify your IoT readiness.

We work closely with you to identify your objectives, while determining your technology requirements and establishing the right organization and governance. A highly tuned strategy will aid in a seamless deployment.

Application Management and DaaS

KORE delivers business and technology application enablement services, supported by a broad IoT ecosystem, to provide a key pillar for a strong IoT foundation. Flexible capabilities allow you to deliver your own branded, unique business applications to maximise value. Our location-based services (LBS) deliver robust tracking, routing, and asset management capabilities. In addition, KORE leverages multiple data elements from internal systems and external access points across the globe for advanced visibility that helps inform fact-based, predictive decisions to drive ROI.

Reporting and Analytics

KORE enables you to capture data for key business metrics, including network status, asset health, job efficiency, and operator compliance. With a better understanding of data traffic patterns, you gain valuable insights to proactively assess the value of IoT delivery. Instill confidence in your IoT deployment and make the right decisions for your business to optimise operational efficiencies.

Connectivity and Carrier Management

KORE simplifies the IoT landscape by guiding you through a near-endless combination of network services, carriers, device partners, and technologies. KORE offers global, multi-technology connectivity from cellular (including 2G through 5G readiness and LPWA) to satellite and unlicensed options. With more than 1 million eSIM shipments to date, KORE offers global, future-proof connectivity that lasts a device's entire lifecycle.

Leverage KORE ConnectivityPro™ to manage multiple carriers and technologies in one unified, streamlined platform. Enjoy a single contract, support, and management system with this innovative platform that powers resilient connectivity.

Award-Winning Network and Security Management

KORE offers an award-winning, transformative security tool that allows for real-time traffic monitoring down to the device level. With customised alerts into anomalies and threat detection, SecurityPro™ gives the most granular insight and network control.

KORE gives companies enhanced control of their IoT data traffic and device connectivity to improve application manageability, performance, and security. The KORE IoT Cloud is a purpose-built global network for IoT, designed from the ground up to meet the highest standards of security and availability. Rapid-Setup VPN services from KORE allow companies to extend their LAN into the KORE IoT Cloud and enable comprehensive encryption of all in-flight data traffic.

Endpoint Lifecycle Management and Managed Services

Whether your IoT solution uses tablets, smartphones, sensors, or other varieties of edge devices, KORE is a comprehensive execution partner for IoT projects, ensuring a successful deployment from inception to completion. Our broad range of professional and managed services fortifies the entire lifecycle of IoT solutions – from procurement through activation of endpoint devices, and beyond – to end-of-life disposition service options. Our sustainment and support services ensure IoT endpoints are properly maintained and meet application service requirements, and we quickly address issues with advanced exchange and replacement capabilities.

KORE is compliant in FDA, HIPAA, ISO 9001/13485, and WEEE with certified distribution centers in North America and the EU.

Develop, Deploy, Secure, and Optimise a Sophisticated IoT Solution

Strategy and Go to Market

KORE eliminates the time-consuming need to identify, evaluate, contract, and manage multiple network connectivity providers, equipment manufacturers, and professional services organisations. By integrating all of the components required for a successful IoT implementation, as well as the proven expertise and required guidance, KORE is a single source provider for bringing together highly complex technologies and enabling streamlined, scalable IoT solutions.

Accelerate Solution Deployment

Through strategic partnerships and extensive IoT experience, KORE enables organisations to accelerate IoT investments and get to market quickly. Our agile, purpose-built approach paired with a comprehensive portfolio allows us to cater our IoT solutions with flexibility to suit your unique business and industry requirements.

Maximise Value from IoT Investments

KORE understands that the IoT implementation process is not linear, and that it must be continuously monitored, analysed, and improved to deliver the highest possible ROI. With professional services spanning IoT deployment, operational management, and sustainment, complemented by robust, state-of-the-art network infrastructure for reporting and analytics, KORE ensures that our customers' IoT solutions are operating to their full potential and delivering the highest level of value possible.

The world's largest independent provider of purpose-built IoT solutions

24+

Local
Carrier
Networks

190

Global
Country
Coverage

6,500+

Customers
Served

12M+

Devices
Managed

~20

Years of IoT
Experience

1M+

eSIMs
Shipped

Driving Vertical Innovation



Communications Services

With end-to-end connectivity and converged services, KORE provides global, multi-tenancy communications services managed all from location. Whether it's our unified, streamlined connectivity management platform, ConnectivityPro, or our Communications Enablement as a Service (CEaaS) offering powered by a scalable core network, we have the ability to swiftly bring your communications services to market with ease.

[Get Connected](#)



Connected Health

For the most comprehensive connected health deployments, KORE Health is an ISO- and FDA-compliant IoT enablement provider that securely connects devices and peripherals to networks and software for healthcare without boundaries. With forward and reverse logistics, global connectivity, Mobile Device Management, and managed services, KORE Health enables industry segments such as remote patient monitoring, decentralised clinical trials, and mobile Personal Emergency Response Systems.

[Connect Your Solution](#)



Assets

KORE Assets provides real-time monitoring and visibility services for in-transit goods and remote assets across global, multi-modal supply chains. With KORE bundled solutions, reduce risk, accelerate delivery, and improve efficiency through high visibility, data analysis, and optimisation. With an international presence and multi-technology connectivity, KORE Assets supports asset monitoring no matter where goods travel, while supporting security, compliance, and regulations. For high-value assets, the KORE Critical Asset Monitoring bundle pairs granular data insight with sensors that can monitor temperature, shock, tilt, and waypoint deviation.

[Streamline Your Logistics](#)



Industrial

Prepare for the 4th Industrial Revolution with KORE Industrial as a trusted, expert IoT advisor. With intelligent data and analytics, carrier-agnostic connectivity, and superior hardware and devices, KORE Industrial provides IoT solutions that improve efficiency, reduce costs, and generate business intelligence. Leverage equipment monitoring, field service tools, and warehouse optimisation to digitally transform your operations.

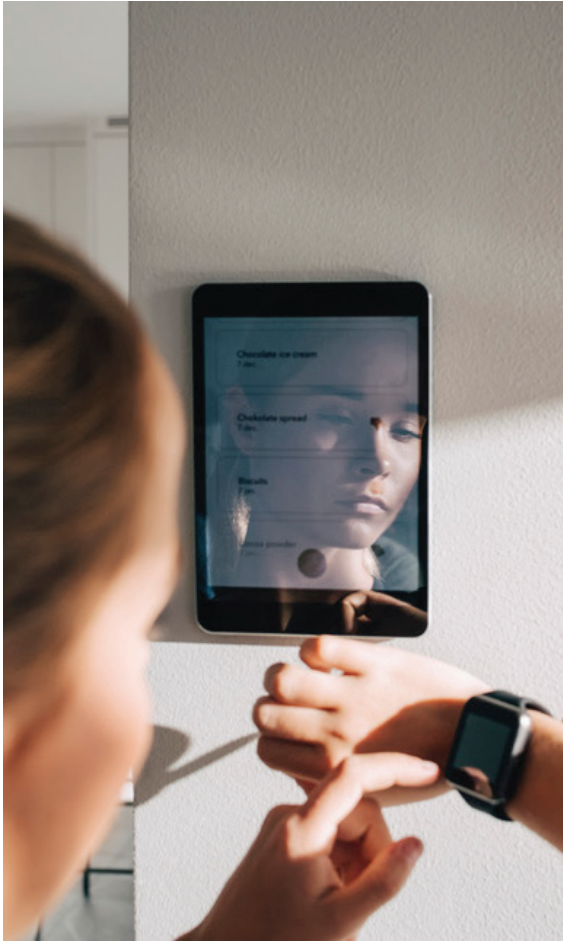
[Join the Revolution](#)



Fleet

Offer turnkey, bundled Location-Based Services solutions, KORE Fleet leverages hardware, connectivity, data aggregation, and analytics to streamline fleet management operations. Reliable, unified Location-Based Services increase productivity and support regulatory compliance, while Advanced Location-Based Services provide video telematics to support driver safety, aid in mitigating insurance costs, and insight for preventative vehicle maintenance.

[Start Your Smart Fleet](#)



KORE is a pioneer, leader, and trusted advisor delivering transformative business performance. We empower organisations of all sizes to improve operational and business results by simplifying the complexity of IoT. Our deep IoT knowledge and experience, global reach, purpose-built solutions, and deployment agility accelerate and materially impact our customers' business outcomes.

**There is a simpler way to transform your business with IoT.
Start the journey here.**

