

EGGTEMP

EGG TEMPERATURE DATA LOGGER



Features

- Features
- Reusable
- Submersible
- Programmable Start Time
- User-Friendly
- Low Cost
- 0 to +60 °C Temperature Range
- ±0.5 °C Accuracy
- 0.1 °C Resolution

Benefits

- Simple Setup and Installation
- Minimal Long-Term Maintenance
- Long-Term Field Deployment

Applications

- Egg Shipment
- Egg Storage
- Hatcheries



MadgeTech's EggTemp is specifically designed to measure and record the temperature of eggs during shipping, storage and incubation. The logger thermally responds to an environment the same way a real egg does, simulating the temperature experience of the actual product.

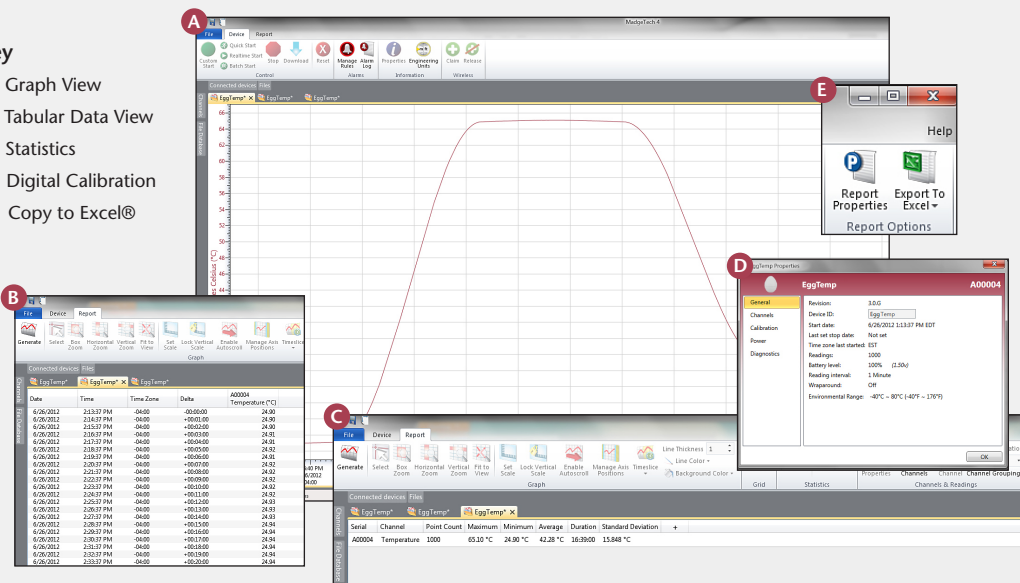
The EggTemp is submersible and can measure temperatures up to +60 °C. It has a user replaceable battery, that typically lasts up to 1 year. The nonvolatile memory can hold up to 32,767 readings and will retain data even if the battery becomes discharged.

MadgeTech's data logger software offers an easy way to analyze data. Data can be viewed in Celsius or Fahrenheit, and in graph, summary or data formats. For further analysis data can also be exported to Excel.

MADGETECH DATA LOGGER SOFTWARE

Key

- A** Graph View
- B** Tabular Data View
- C** Statistics
- D** Digital Calibration
- E** Copy to Excel®



- ### Software Features:
- Multiple graph overlay
 - Statistics
 - Digital calibration
 - Zoom in/ zoom out
 - Lethality equations (F0, PU)
 - Mean Kinetic Temperature
 - Full time zone support
 - Data annotation
 - Min./Max./Average lines
 - Data table view
 - Automatic report generation
 - Summary view
 - Multilingual

EGGTEMP SPECIFICATIONS*

Temperature Sensor:	Internal Semiconductor
Temperature Range:	0 °C to +60 °C (+32 °F to +140 °F)
Temperature Resolution:	0.1 °C
Calibrated Accuracy:	±0.5 °C
Alarm:	Programmable high and low limits; Alarm is activated when temperature reaches or exceeds set limits.
Activity Indicator:	Green LED blinks to indicate device has been started, red LED blinks if an alarm condition exists.
Calibration:	Digital calibration through software.
Calibration Date:	Automatically recorded within device.
Real Time Recording:	May be used with PC to monitor and record data in real time.
Memory:	32,767 readings
Reading Rate:	1 reading every 2 seconds up to 1 reading every 12 hours.
Start Modes:	Software programmable immediate start or delay start up to six months in advance.

Data Format:	Date and time stamped °C, °F, K, °R
Battery Type:	2 - 1.55V SR1154W batteries included; user replaceable.
Battery Life:	1 year typical at 25 °C, 1 minute reading intervals.
Time Accuracy:	±1 minute/month at 20 °C
Computer Interface:	PC serial or USB (interface cable required); 38,400 baud
Software:	XP SP3/Vista/Windows 7/Windows 8
Operating Environment:	0 °C to +60 °C (+32 °F to +140 °F), 0 %RH to 100 %RH
Submersible:	Up to 150 ft., IP68
Dimensions:	2.25 in x 1.68 in dia. (57.15 mm x 42.67 mm dia.)
Weight:	2.02 oz (60 g)
Material:	<ul style="list-style-type: none"> • Enclosure: HDPE • Logger: 303 Stainless Steel
Approvals:	CE Compliant

BATTERY WARNING: FIRE, EXPLOSION, AND SEVERE BURN HAZARD. DO NOT SHORT CIRCUIT, CHARGE, FORCE OVER DISCHARGE, CRUSH, PENETRATE, OR INCINERATE. BATTERY MAY LEAK OR EXPLODE IF HEATED ABOVE 100 °C (212 °F).

*SPECIFICATIONS ARE SUBJECT TO CHANGE WITHOUT NOTICE. SPECIFIC WARRANTY REMEDY LIMITATIONS APPLY. CALL 1-603-456-2011 OR GO TO WWW.MADGETECH.COM FOR DETAILS.

ORDERING INFORMATION

MODEL	DESCRIPTION
EGGTEMP	Egg Temperature Data Logger
IFC102	Software, manual and RS232 interface cable for Micro Series.
IFC202	Software, manual and USB interface cable for Micro Series.
NIST	NIST Calibration Certificate
SR1154	Replacement battery for the EggTemp

ASK ABOUT OUR OTHER DATA LOGGERS

- Temperature
- Humidity
- Pressure
- pH
- Level
- Shock
- LCD Display
- Pulse/Event/State
- Current
- Voltage
- Wireless
- Intrinsically Safe
- Spectral Vibration
- Motion

For Quantity Discounts call 603-456-2011 or email sales@madgetech.com