

DATA LOGGING SOLUTIONS

For Regulatory Compliance in

EGG SHIPPING AND STORAGE



*Validate Egg Processes
with the EggTemp and EggTemp-RH*



MadgeTech has developed a series of temperature and humidity data loggers specifically for the egg industry. They measure and record temperature or temperature and humidity data, to validate egg processing applications.

Applications:

- Egg Shipment Validation
- Egg Storage Monitoring
- Egg Incubator Monitoring
- Hatcheries



EggTemp
Price: \$149

The **EggTemp** is an egg temperature data logger that is designed to thermally respond to an environment the same way a real egg does. This submersible device measures and records temperature data to validate egg processes.

Data can be downloaded and viewed in MadgeTech's standard data logger software, a free download from madgetech.com. It can then be converted into Celsius or Fahrenheit, and analyzed in graphical, tabular or summary formats.



EggTemp-RH
Price: \$179

The Egg-Temp is available in a temperature and humidity model, called the **EggTemp-RH**. It measures and records date and time stamped data for both parameters, and is designed for use in dry applications.

For applications that require the EggTemp and EggTemp-RH, customers can order the **EGMS** system, which includes the EggTemp data logger and both the submersible temperature cap and the humidity and temperature cap.

Specifications

	Egg-Temp	EggTemp-RH
Range	32 to 140°F (0 to +60°C)	32 to 140°F (0 to +60°C) 0 to 95%RH
Resolution	±0.18°F (±0.1°C)	±0.18°F (±0.1°C) 0.5% RH
Calibrated Accuracy	±0.5°F (±0.3°C)	±0.5°F (±0.3°C) ±3.0%RH
Memory	16,383	16,383 per channel
Reading Rate	2 seconds up to 12 hours	
LED Indicators	Red & Green	
Battery Life	1 year typical	
Operating Environment	32 to 140°F (0 to +60°C), 0 to 100%RH	32 to 140°F (0 to +60°C), 0 to 95%RH non-condensing
Submersible	Yes, IP68	No
Dimensions	2.25" x 1.68" dia. (57.15mm x 42.67mm dia.)	
Material	Data Logger: 303 Stainless Steel Enclosure: HDPE	
Interface Cable	IFC202 (Required)	



Monitoring Egg Temperatures During Shipping



Problem

The Egg Products Inspection Act require that eggs do not exceed 45°F during transport.

Solution

The EggTemp, an egg temperature data logger.

Method

- 1) **Start** the logger
- 2) **Deploy** the EggTemp into a carton within the shipment.
- 3) Once the shipment is received, **Download** the data and verify the temperature stayed within a safe range.

MadgeTech Data Logger Software

This simple, easy-to-use, Windows-based software enables the user to effortlessly collect, display, and analyze data. A variety of powerful tools can be used to examine, export, and print professional quality reports with just a click of the mouse. This software can be downloaded for free from the MadgeTech website.

Key

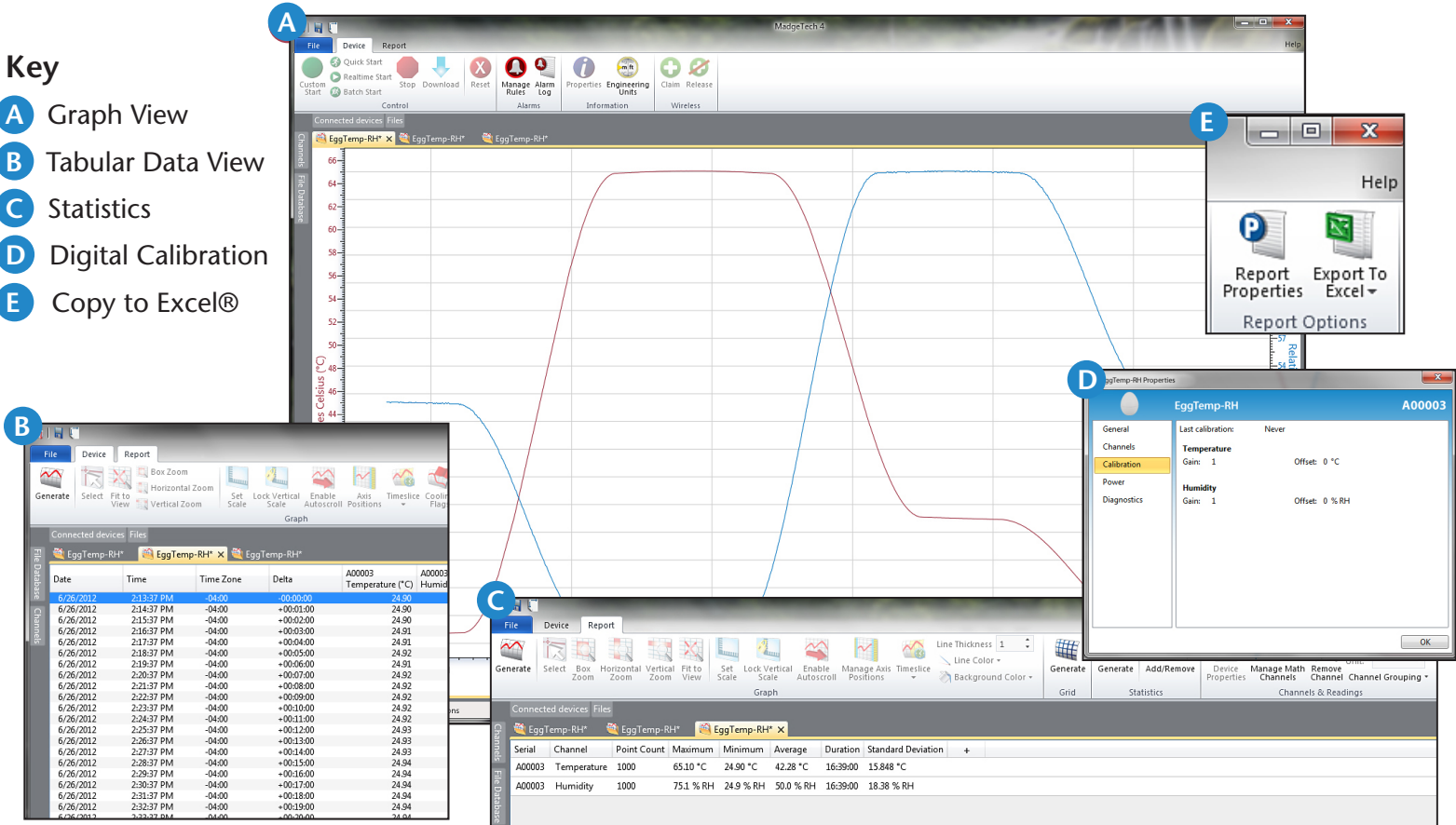
A Graph View

B Tabular Data View

C Statistics

D Digital Calibration

E Copy to Excel®



Software Features

- Multiple graph overlay
- Statistics calculations
- Digital calibration
- Zoom in/ zoom out
- Cooling flags
- Average line
- Lethality equations
- Full time zone support
- Data annotation
- Min./max. line
- Data table view
- MKT
- Automatic cooling time calculation