

EGGTEMP-RH

EGG TEMPERATURE & HUMIDITY DATA LOGGER



Features

- Reusable
- Programmable start time
- User-friendly
- Low cost
- 0 °C to 60 °C temperature range and 0 %RH to 95 %RH humidity
- ±0.5 °C and ±3.0 %RH accuracy
- 0.1 °C and 0.5 %RH resolution

Applications

- Egg shipment
- Egg storage
- Hatcheries



MadgeTech's EggTemp-RH is specifically designed to measure and record the humidity and temperature of eggs during shipping, storage and incubation. The logger thermally responds to an environment the same way a real egg does, simulating the humidity and temperature experience of the actual product.

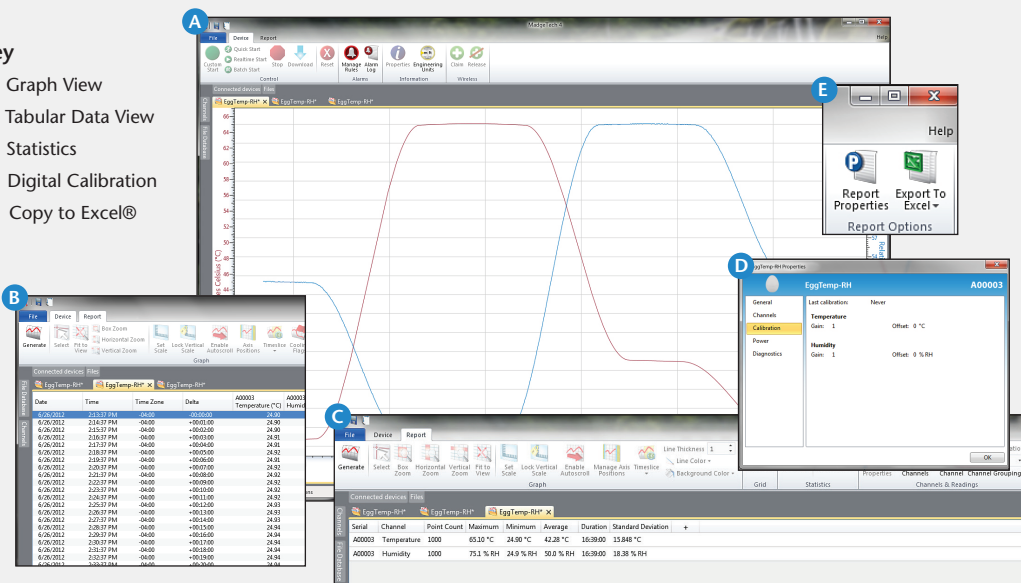
The EggTemp-RH can measure 0 %RH to 95 %RH and up to 60 °C. It has a user replaceable battery, that typically lasts up to 1 year. The non-volatile memory can hold up to 32,767 readings and will retain data even if the battery becomes discharged.

MadgeTech's data logger software offers an easy way to analyze data. Data can be viewed in Celsius or Fahrenheit, and in graph, summary or data formats. For further analysis data can also be exported to Excel.

MADGETECH DATA LOGGER SOFTWARE

Key

- A** Graph View
- B** Tabular Data View
- C** Statistics
- D** Digital Calibration
- E** Copy to Excel®



- ### Software Features:
- Multiple graph overlay
 - Statistics
 - Digital calibration
 - Zoom in/ zoom out
 - Lethality equations (F0, PU)
 - Mean Kinetic Temperature
 - Full time zone support
 - Data annotation
 - Min./Max./Average lines
 - Data table view
 - Automatic report generation
 - Summary view
 - Multilingual

EGGTEMP-RH SPECIFICATIONS*

Temperature Sensor:	Semiconductor
Temperature Range:	0 °C to +60 °C (+32 °F to +140 °F)
Temperature Resolution:	0.1 °C
Calibrated Accuracy:	±0.5 °C
Humidity Sensor:	Semiconductor
Humidity Range:	0 %RH to 95 %RH
Humidity Resolution:	0.5 %RH
Calibrated Accuracy:	±3.0%RH (±2.0%RH typical @ +25 °C)
Specified Accuracy Range:	+10 °C to +40 °C (+50 °F to +104 °F), 10 %RH to 80 %RH
Response Time:	90% change in 60 seconds in slow moving air
Calibration:	Digital calibration through software
Start Modes:	Software programmable immediate start or delay start up to six months in advance
Real Time Recording:	May be used with PC to monitor and record data in real time

BATTERY WARNING: DO NOT DISPOSE OF IN FIRE OR RECHARGE—MAY EXPLODE OR LEAK AND CAUSE PERSONAL INJURY.

*SPECIFICATIONS ARE SUBJECT TO CHANGE WITHOUT NOTICE. SPECIFIC WARRANTY REMEDY LIMITATIONS APPLY. CALL 1-603-456-2011 OR GO TO WWW.MADGETECH.COM FOR DETAILS.

Memory:	16,383 readings per channel; 32,766 total readings
Reading Rate:	1 reading every 2 seconds up to 1 reading every 12 hours
Time Accuracy:	±1 minute/month @ +20 °C
Data Format:	Date and time stamped °C, °F, K, °R; %RH, mg/ml water vapor concentration
Battery Type:	2 - 1.55V SR1154W batteries included; user replaceable
Battery Life:	1 year typical (15 minute reading rate, 25°C)
Activity Indicator:	Green LED blinks every 15 seconds to indicate device has been started
Temperature Alarm:	Programmable temperature alarm with high and low limits selectable in software; when logged data reaches or exceeds either limit, the red LED blinks every three seconds
Computer Interface:	PC serial or USB (interface cable required) 38,400 baud
Software:	XP SP3/Vista/Windows 7/Windows 8
Operating Environment:	0 °C to +60 °C (+32 °F to +140 °F), 0 %RH to 95 %RH non-condensing
Dimensions:	2.25 in X 1.68 in dia. (57.15 mm x 42.67 mm dia.)
Weight:	2.02 oz (60 g)
Material:	Enclosure: HDPE Logger: 303 Stainless Steel

ORDERING INFORMATION

MODEL	DESCRIPTION
EggTemp-RH	EggTemp-RH, egg temperature and humidity data logger
IFC102	Software, manual and RS232 interface cable
IFC202	Software, manual and USB interface cable
Calibration Certificate	Calibration Certificate available for data logger
SR1154	Replacement battery for the EggTemp-RH

ASK ABOUT OUR OTHER DATA LOGGERS

- Temperature
- Humidity
- Pressure
- pH
- Level
- Shock
- LCD Display
- Pulse/Event/State
- Current
- Voltage
- Wireless
- Intrinsically Safe
- Spectral Vibration
- Motion

For Quantity Discounts call 603-456-2011 or email sales@madgetech.com