



IFC406 Multiplexer Data Logger Interface

# Quick Installation Guide



**IMPORTANT:** Do not connect the IFC406 to your PC until instructed to do so or the setup will not work.

### Package Contents



*\*Optional AC Power adapter included, recommended for three or more daisy-chained IFC406s.*

### Product Overview

The IFC406 Multiplexer Data Logger Interface allows for multiple devices to be connected into one interface. Each IFC406 allows for 6 data loggers to be connected. Up to 3 IFC406 units may be daisy-chained together to communicate with a total of 18 devices through 1 USB port. To connect multiple IFC406 Interfaces together, simply join the units side by side, making sure the spring pin contacts are connected and magnetically joined.

#### LED Indicators

**Blue:** Indicates unit has power.  
**Amber:** Channel is busy or searching for a device  
**Green:** Operation successful or complete

#### Dust Cover

Be sure to remove the dust cover from the spring pin contacts to ensure the devices communicate properly. (1)



(Fig. 1 - Spring pin contacts)

Operating Environment	+10 °C to +35 °C; 0 %RH to 95 %RH non-condensing
Connection Type	USB (to PC)
Weight	1.65 lb (750 g)
Material	6061 Aluminum (PTFE impregnated hard anodized coating), ABS Plastic
Dimensions	Enclosure: 9.5 in x 1.95 in x 1.75 in
Maximum Input Voltage	6 Volts (V)
Approval	CE
Battery	This device does not use a battery

For XP SP3/Vista/Windows 7/Windows 8

Model No. IFC406

## 1 Install Software & Setup USB Data Logger Interface

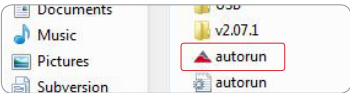
**IMPORTANT:** If the MadgeTech 4 Software is already installed on the Windows PC, please move on to **Section 1C** of the Quick Installation Guide.

**A** Insert the MadgeTech 4 Software Flash Drive into an open USB port on a Windows PC. If the autorun does not appear, locate the drive on the computer by selecting the **Start** menu and choosing **Computer** or **My Computer**. Browse to the Removable Disk drive corresponding to the USB port you selected.

For Windows 7 and Windows 8 users, a dialog box may appear with a list of options. Select **Open Folder to View files**. If you are not prompted, click the **Start** menu and choose **Computer** or **My Computer** and browse to the Removable Disk drive corresponding to the USB port you selected.

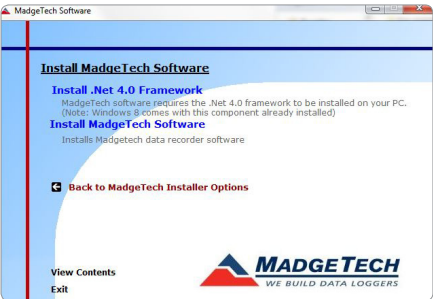


Once you locate the contents of the USB flash drive, click on **auto-run**.



The MadgeTech 4 Setup Screen will display with options as shown to the left.

**B** If the Windows PC doesn't already have .NET 4.0 Framework, installation may be required. Select **Install .Net 4.0 Framework** to install. To see if the .NET 4.0 Framework is already installed on the Windows PC, go to the Windows **Control Panel** and select **Programs**. "**Microsoft .NET Framework 4.0**" would be listed as a Windows program. (Note: Windows 8 comes with this component already installed).



Select **Install MadgeTech Software** if .NET framework is installed on the Windows PC, or if installing on a Windows 8 machine. Follow the MadgeTech 4 Setup Wizard on screen prompts to complete the installation. Click back to MadgeTech contents when completed.

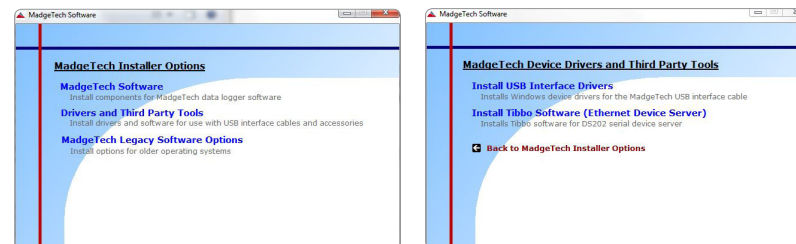


**Additional Information**  
For additional information or troubleshooting assistance, visit us online at [www.madgetech.com](http://www.madgetech.com), contact us for support at e-mail [support@madgetech.com](mailto:support@madgetech.com) or call (603) 456-2011.

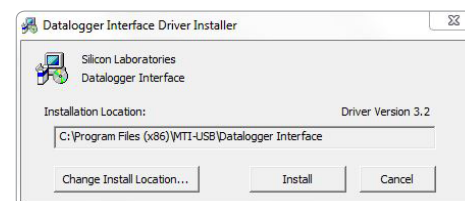
MadgeTech, Inc.  
6 Warner Road, Warner, NH 03278  
Phone: (603) 456-2011  
Fax: (603) 456-2012

[support@madgetech.com](mailto:support@madgetech.com)  
[www.madgetech.com](http://www.madgetech.com)

**C** To install the drivers for the IFC406, click on the **Drivers and Third Party Tools** link on the MadgeTech Installer Options window panel. In the next window click on **Install USB Interface Drivers**. A window will appear prompting for a directory and to start the installation.



The default directory is `C:\Program Files\MTI-USB\Datalogger Interface`. If you choose to change the location of the install directory, select the **Change Install Location** button. Once you have the install location set select the **Install** button to start the installation.



**2**

## Connecting the Data Logger Interface

**Warning:** Install driver before connecting this device.

**A**

Remove the Warning Label to expose the USB connector. Connect one end of the USB cable to the USB port of the IFC406.

**B**

Connect the other end to a USB port on your PC. When the IFC406 is plugged in, a **New Hardware Found** message will appear in the lower right corner of your screen. The new drivers will automatically configure themselves for use with the Interface cable. A message will then appear that the new hardware is installed and ready to use.

**The installation of the USB data logger interface is complete!**



**Found New Hardware**  
USB Device

**3**

## Test the Data Logger Interface Operation

**A**

To verify that the USB Interface drivers are installed properly, check to ensure the Data Logger Software can recognize a device.

**B**

When the interface cable is connected to the PC the blue LED power indicator light should be on. If the indicator light is **not** on, unplug the interface cable, wait 5 seconds and plug it back into the PC.

**C**

Start the MadgeTech Data Logger Software. (If necessary, see the software manual for additional information on the software)

**D**

Your device(s) will appear in the list displayed, select your device in this list and choose your desired start method.

