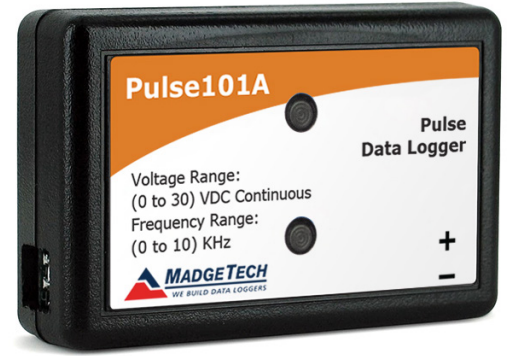


# Pulse101A

## Pulse Data Logger



The Pulse101A is a compact data logger compatible with many switches, meters and transducers. This multipurpose pulse recording device is designed to accurately monitor and record events occurring within a specified time frame.

The Pulse101A can be used for flow rate, gas and water metering, or can also be used in conjunction with an anemometer to track air speed. This versatile low cost device is compatible with dry contact closures and has many general purpose uses such as frequency monitoring and traffic studies.

The Pulse101A has a maximum pulse rate of 10 KHz to capture rapid events for a wide range of applications. With a ten year battery life and the ability to store over 1,000,000 readings, the Pulse101A can be deployed for long term assignments and configured to start and stop logging as specified by the user.

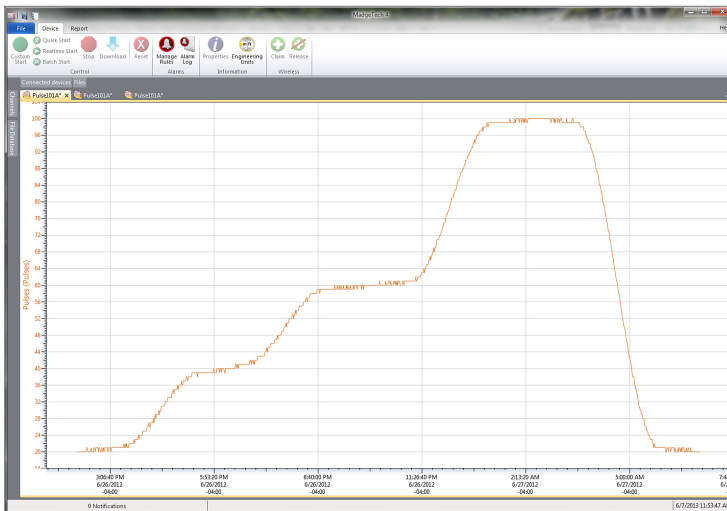
## Features

- 10 Year Battery Life
- 1 Second Reading Rate
- Multiple Start/Stop Function
- Ultra High Speed Download
- 1,047,552 Reading Storage Capacity
- Memory Wrap
- Battery Life Indicator
- Optional Password Protection
- Field Upgradeable

## Benefits

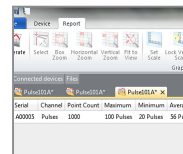
- Simple Setup and Installation
- Minimal Long-Term Maintenance
- Long-Term Field Deployment

## MadgeTech 4 Software Features

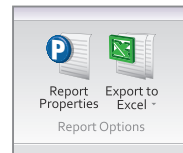


Graph View

- Multiple graph overlay
- Statistics
- Digital calibration
- Zoom in/ zoom out
- Lethality equations (F0, PU)
- Mean Kinetic Temperature
- Full time zone support
- Data annotation
- Min./Max./Average lines
- Summary view



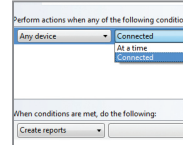
Statistics



Export to Excel

Time	Time Zone	Data
1:33:37 PM	-0400	-00:00:00
1:34:37 PM	-0400	-00:01:00
1:35:37 PM	-0400	-00:02:00
1:36:37 PM	-0400	-00:03:00
1:37:37 PM	-0400	-00:04:00
1:38:37 PM	-0400	-00:05:00
1:39:37 PM	-0400	-00:06:00
1:40:37 PM	-0400	-00:07:00
1:41:37 PM	-0400	-00:08:00
1:42:37 PM	-0400	-00:09:00
1:43:37 PM	-0400	-00:10:00
1:44:37 PM	-0400	-00:11:00
1:45:37 PM	-0400	-00:12:00
1:46:37 PM	-0400	-00:13:00
1:47:37 PM	-0400	-00:14:00
1:48:37 PM	-0400	-00:15:00

Tabular Data View



Automation

## Applications

- Compatible with Dry Contact Closures
- Flow Rate Recording
- Gas and Water Metering
- Traffic Studies
- Frequency Recording
- Air Speed Indicators
- General Purpose Pulse Recording

## SPECIFICATIONS

Specifications are subject to change without notice. Specific warranty remedy limitations apply. Call (603) 456-2011 or go to [madgetech.com](http://madgetech.com) for details.

MEASUREMENT	
<b>Input Connection</b>	Removable screw terminal
<b>Maximum Pulse Rate</b>	10 KHz
<b>Input Range</b>	0 to 30 VDC continuous
<b>Input Low</b>	< 0.4 V
<b>Input High</b>	> 2.8 V
<b>Internal Weak Pull-Up</b>	< 60 $\mu$ A
<b>Input Impedance</b>	> 60 k $\Omega$
<b>Minimum Pulse Width/ Contact Closure Duration</b>	$\geq$ 10 microseconds
<b>Engineering Units</b>	Native measurement units can be scaled to display measurement units of another type. This is useful when monitoring outputs from different types of sensors such as flow rate, wind speed and more

GENERAL	
<b>Start Modes</b>	Immediate start Delay start up to 18 months Multiple pushbutton start/stop
<b>Stop Modes</b>	Manual through software Timed (specific date and time)
<b>Multiple Start/Stop Mode</b>	Start and stop the device multiple times without having to download data or communicate with a PC
<b>Real Time Recording</b>	May be used with PC to monitor and record data in real time
<b>Password Protection</b>	An optional password may be programmed into the device to restrict access to configuration options. Data may be read without the password.
<b>Memory</b>	1,047,552 readings; software configurable memory wrap 349,184 readings in multiple start/stop mode
<b>Wrap Around</b>	Yes
<b>Reading Rate</b>	1 reading every second up to 1 reading every 24 hours
<b>Alarm</b>	Programmable high and low limits; alarm is activated when recording environment reaches or exceeds set limits
<b>LEDs</b>	2 status LEDs
<b>Calibration</b>	Digital calibration through software
<b>Calibration Date</b>	Automatically recorded within device
<b>Battery Type</b>	3.6 V lithium battery included; user replaceable
<b>Battery Life</b>	10 years typical, dependent upon frequency and duty cycle
<b>Data Format</b>	Date and time stamped uA, mA, A
<b>Time Accuracy</b>	$\pm$ 1 minute/month at 25 $^{\circ}$ C (77 $^{\circ}$ F) – Stand alone data logging
<b>Computer Interface</b>	USB (interface cable required); 115,200 baud
<b>Operating System Compatibility</b>	Windows XP SP3 or later
<b>Software Compatibility</b>	Standard Software version 2.03.06 or later Secure Software version 4.1.3.0 or later
<b>Operating Environment</b>	-40 $^{\circ}$ C to +80 $^{\circ}$ C (-40 $^{\circ}$ F to +176 $^{\circ}$ F) 0 %RH to 95 %RH non-condensing
<b>Dimensions</b>	1.4 in x 2.1 in x 0.6 in (35 mm x 54 mm x 15 mm)
<b>Weight</b>	0.8 oz (24 g)
<b>Material</b>	Polycarbonate
<b>Approvals</b>	CE

**BATTERY WARNING:** FIRE, EXPLOSION AND SEVERE BURN HAZARD. DO NOT RECHARGE, DISASSEMBLE, HEAT ABOVE 100  $^{\circ}$ C (212  $^{\circ}$ F), INCINERATE, CRUSH, OR EXPOSE CONTENTS TO WATER.

## Ordering Information

<b>Pulse101A</b>	PN 901312-00	Pulse Data Logger
<b>IFC200</b>	PN 900298-00	USB interface cable
<b>LTC-7PN</b>	PN 900352-00	Replacement battery for the Pulse101A

For Quantity Discounts call (603) 456-2011 or email [sales@madgetech.com](mailto:sales@madgetech.com)