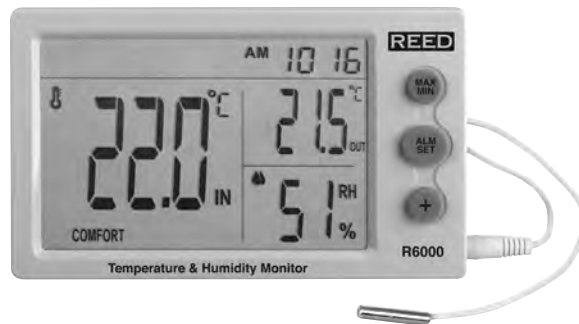


REED

Model R6000 Temperature & Humidity Monitor



Instruction Manual

www.reedinstruments.com

REED Instruments

1-877-849-2127 | info@reedinstruments.com | www.reedinstruments.com

Table of Contents

Features.....	3
Applications.....	3
Specifications.....	4
Instrument Description.....	5
Display Description.....	6
Operating Instructions.....	7-8
<i>Clock and Alarm Modes.....</i>	<i>7</i>
<i>Setting the Clock.....</i>	<i>7</i>
<i>Setting the Alarm.....</i>	<i>7</i>
<i>Resetting Maximum and Minimum Readings.....</i>	<i>8</i>
<i>Selecting the Unit of Measure (°C/°F).....</i>	<i>8</i>
Battery Replacement.....	8



Features

- Measures indoor/outdoor temperature and humidity
- User selectable unit of measure °F/°C
- Internal memory stores min/max temperature and humidity readings
- Waterproof sensor for outdoor temperature measurement with 6' (72") cable
- Built-in alarm clock and time display
- Desktop or wall mount
- Includes battery

Applications

Environmental monitoring in:

- Laboratories
- Greenhouses
- Industrial spaces
- Museums
- Residential and commercial buildings



www.reedinstruments.com

3

REED Instruments

1-877-849-2127 | info@reedinstruments.com | www.reedinstruments.com

Specifications

Temperature (IN)

Range:	-10 to 50°C (14 to 122°F)
Accuracy:	-10 to 0°C (14 to 32°F): ±2°C (3.6°F) 0 to 40°C (32 to 104°F): ±1°C (1.8°F) 40 to 50°C (104 to 122°F): ±2°C (3.6°F)
Resolution:	0.1°C (0.1°F)

Temperature (OUT)

Range:	-40 to 50°C (-40 to 122°F)
Accuracy:	-40 to 0°C (-40 to 32°F): ±2°C (3.6°F) 0 to 40°C (32 to 104°F): ±1°C (1.8°F) 40 to 50°C (104 to 122°F): ±2°C (3.6°F)
Resolution:	0.1°C (0.1°F)

Humidity

Range:	20 to 95%RH
Accuracy*:	40 to 80% RH: ±5%RH <40 and >80% RH: ±8%RH
Resolution:	1%RH

General Specifications

Humidity Comfort Icons:	Wet/Comfort/Dry
Sampling Time:	10 seconds
Temperature Probe Length:	6' (72")
Alarm Clock/Time Display:	Yes
Max/Min Functions:	Yes (IN/OUT/RH)
Product Certifications:	CE, RoHS
Power Supply:	1 x AAA Battery
Operating Temperature:	-10 to 50°C (14 to 122°F)
Dimensions:	5.1 x 1 x 3.1" (130 x 22 x 78mm)
Weight:	3.9 oz (110g)

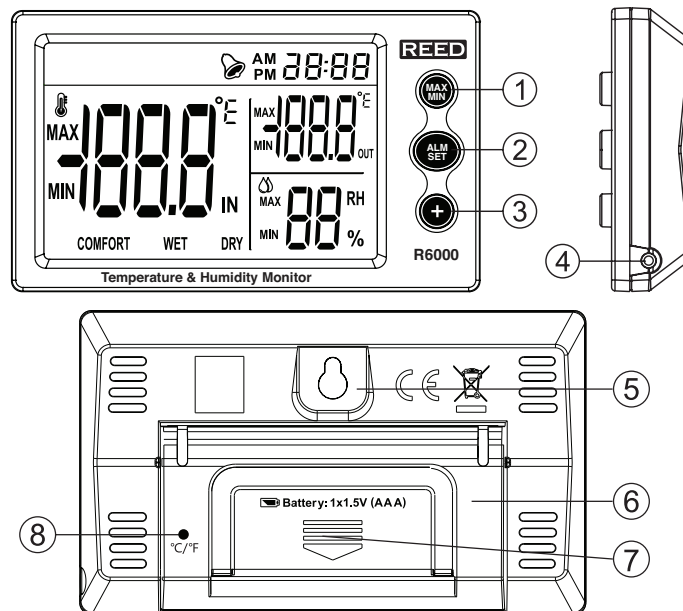
*Based on indoor temperature conditions between 64.4°F and 82.4°F (18°C to 28°C)



www.reedinstruments.com

4

Instrument Description



1. MAX/MIN value button
2. Alarm/Clock set button
3. Increase digit button
4. External probe input
5. Wall mount hole
6. Kickstand
7. Battery cover
8. °C/°F toggle button

REED

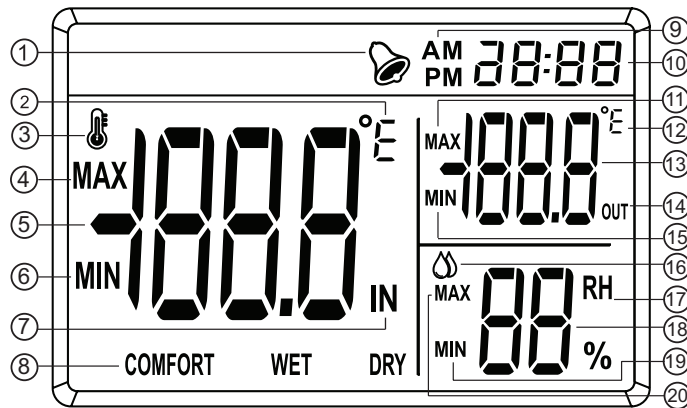
www.reedinstruments.com

5

REED Instruments

1-877-849-2127 | info@reedinstruments.com | www.reedinstruments.com

Display Description



- | | |
|---|---|
| 1. Alarm icon | 11. Max temperature value measured by external sensor |
| 2. Temperature unit (°C/°F) | 12. Unit of temperature measured by external sensor (°C/°F) |
| 3. Temperature icon | 13. Temperature value measured by external sensor |
| 4. Max temperature value measured by inner sensor | 14. External temperature sensor indicator |
| 5. Current temperature value measured by inner sensor | 15. Min temperature value measured by external sensor |
| 6. Min temperature value measured by inner sensor | 16. Humidity icon |
| 7. Inner temperature sensor indicator | 17. Relative humidity indicator |
| 8. Environmental comfort level icons | 18. Humidity measurement |
| 9. AM/PM icons | 19. Min humidity value |
| 10. Time | 20. Max humidity value |

REED

www.reedinstruments.com

6

REED Instruments

1-877-849-2127 | info@reedinstruments.com | www.reedinstruments.com

Operating Instructions

Clock and Alarm Modes

In order to set the clock or alarm the correct mode must be selected by pressing the **ALARM/CLOCK SET** button.

1. When in clock mode the “:” symbol between the hour and minute will flash.
2. When in alarm mode the “:” symbol appears between the hour and minute but does not flash. If an alarm is already set the Alarm icon (bell) will also flash to indicate the alarm mode function.

To toggle between both modes press the **ALARM/CLOCK SET** button.

Setting the Clock

When in clock mode, press and hold the **ALARM/CLOCK SET** button for 2 seconds and the clock minutes will flash.

1. To adjust the minutes, press or press and hold the **INCREASE DIGIT** button until the desired value is reached.
2. Next, press the **ALARM/CLOCK SET** button again to switch to the hour digit. Press or press and hold the **INCREASE DIGIT** button until the desired value is reached.
3. Lastly, press the **ALARM/CLOCK SET** button again to toggle the AM/PM indicator on or off. When off, the clock will be displayed in 24 hour format.

Setting the Alarm

When in alarm mode, press and hold the **ALARM/CLOCK SET** button for 2 seconds and the clock minutes will flash.

1. To adjust the minutes, press or press and hold the **INCREASE DIGIT** button until the desired value is reached.
2. Next, press the **ALARM/CLOCK SET** button again to switch to the hour digit. Press or press and hold the **INCREASE DIGIT** button until the desired value is reached.
3. Press the **ALARM/CLOCK SET** button again to set the alarm to on or off. Press the **INCREASE DIGIT** button to toggle the Alarm icon (Bell) on or off.

continued ...



www.reedinstruments.com

7

Resetting Maximum and Minimum Readings

Press the **MAX/MIN** button to toggle between maximum, minimum and real-time values. To reset maximum or minimum readings press and hold the **MAX/MIN** button for 2 seconds in the desired setting. When holding the button for 2 seconds, a beep will sound indicating the memory has been cleared.

Selecting the Unit of Measure (°C/°F)

Using a paperclip, press the °C/°F toggle button on the back of the R6000. When the button is pressed, a beep will sound indicating the unit of measure has been switched.

Battery Replacement

Follow the directions on the back cover to open the battery compartment door. Install a new battery and replace the battery compartment door.

For service on this or any other REED product or information on other REED products, contact REED Instruments at info@reedinstruments.com.



www.reedinstruments.com