

# DATAPAQ<sup>®</sup> EasyTrack<sup>®</sup>3 Profiling System

DATAPAQ ET3 Datalogger Available with 4 and 6 Channels



DATAPAQ EasyTrack3 Professional system



EasyTrack3 Professional System operational



EasyTrack3 STD/ADV system



ET3 Loggers ET4043 & ET6063



ET3 logger – replaceable battery



ET3 Barriers TB0253 & TB0263

<b>Channels</b>	4 or 6 thermocouple options
<b>Measurement range</b>	-150 to 500 °C (-238 to 932 °F)
<b>Thermocouple type</b>	K (mini-plug)
<b>Logger accuracy</b>	± 0.5 °C (± 0.9 °F)
<b>Cold junction compensation</b>	Accuracy guaranteed with change in logger temperature
<b>Resolution</b>	± 0.1 °C (± 0.2 °F)
<b>Logger operating range</b>	0 to 85 °C (32 to 185 °F) with safe auto shut down
<b>Case</b>	High temperature cool touch molded polycarbonate <100 °C (212 °F)
<b>PCB</b>	Coated to improve moisture protection
<b>Sampling interval</b>	0.5 s to 60 min
<b>Start trigger</b>	Auto start / start button / temperature trigger
<b>Battery use</b>	Replaceable 9V alkaline (ANSI/NEDA 1604A IEC6LR61)
<b>Battery life</b>	Min 360 hours continuous operation – 5 s, 6 channels 25 °C (77 °F) Min 50 × 1 hour oven runs – 5 s, 6 channels at 70 °C (158 °F)
<b>Memory</b>	18,000 readings per channel per run (0.5 s sample interval = 2.5 hours run time). Non volatile hot data protection.
<b>On board calibration data</b>	Digital certificate
<b>On board logger LEDs</b>	Logger & battery status indication
<b>On board logger diagnostics</b>	Service email for logger health check
<b>Logger USB power</b>	No battery discharge on reset & download
<b>Auto logger detection</b>	Auto boot up when logger detected by Insight™ software
<b>Multiple run capability*</b>	Max 3 runs separately stored in logger
<b>SmartPaq*</b>	Intelligent logger profile run “pass/fail” indicator
<b>Computer interface cable</b>	CI1150 mini-B USB connector
<b>Hardwired telemetry</b>	via USB cable
<b>Software compatibility</b>	EasyTrack Insight (V8.50); EasyTrack Insight Professional (V8.50)
<b>Windows compatibility</b>	32 and 64-bit versions of Windows® XP, Vista, 7, 8, 10
<b>Logger dimension (l × w × h)</b>	170 × 67 × 20.5 mm (6.7 × 2.6 × 0.8 in)
<b>Replaces</b>	EasyTrack – ET5051; EasyTrack2 – ET4041 & ET6061
<b>Logger weight</b>	ET4043 – 196 g (0.43 lbs); ET6063 – 200 g (0.44 lbs)

\* Requires Insight Professional software

## THERMAL BARRIERS

The DATAPAQ EasyTrack3 system is offered with a range of thermal barriers designed to match different coating applications or operational needs. It is proven to keep the logger safe through the process and maintain logger temperatures at a level to guarantee the accuracy of the temperature measurements recorded. It provides dual protection confidence using microporous insulation and phase change technology.

Barrier	TB0253	TB0263	TB2037	TB5000-HT
<b>Construction</b>	Aluminum	Aluminum	Stainless steel	Stainless steel
<b>L x w x h mm (in)</b>	265 x 185 x 110 mm (10.4 x 7.3 x 4.3 in)	297 x 187 x 125 mm (11.7 x 7.4 x 4.9 in)	229 x 90 x 31 (9.0 x 3.5 x 1.2)	292 x 190 x 130 (11.5 x 7.5 x 5.1)
<b>Weight incl. barrier and heat sink Protection* (min)</b>	3 kg (6.5 lbs)	3.7 kg (8.2 lbs)	0.55 kg (1.2 lbs)	6.2 kg (13.7 lbs)
<b>at 100 °C (212 °F)</b>	330	540	30	870
<b>at 150 °C (302 °F)</b>	180	270	18	390
<b>at 200 °C (392 °F)</b>	120	180	13	270
<b>at 250 °C (482 °F)</b>	75	110	9	210
<b>at 300 °C (572 °F)</b>	40	60	–	180
<b>at 400 °C (752 °F)</b>	–	–	–	90
<b>Heat sink</b>	TB9550: 58 °C (135 °F)	TB9950: 58 °C (135 °F)	NA	TB1001x2: 58 °C (135 °F)

\* Protection quoted at constant environmental temperature.



PA0063



PA0060



PA0181



PA0995/PA0973



PA0055/PA0053



PA0021/PA0011



CS3191/CS3192



PA2054



CC0049

## THERMOCOUPLES

Thermocouple range offers accuracy and reliability. Quad wrapped, 10 Stand PTFE and metal braid coated type K thermocouples designed with circular cross section to reduce kinking and strong crimped plug cable attachment. Specified to ANSI MC96.1 special limits of error  $\pm 0.4\%$  or  $1.1\text{ }^{\circ}\text{C}$  ( $34.0\text{ }^{\circ}\text{F}$ ). PTFE cables are rated up to  $265\text{ }^{\circ}\text{C}$  ( $509\text{ }^{\circ}\text{F}$ ). Cables quoted 1.5 m (6 ft) but available in variety of lengths.

### Exposed Junction

Spot welded soldered or taped to product

**PA0063** Exposed junction PTFE

**PA0060** Patch probe PTFE

**PA0181** Exposed junction fiberglass (operates safely up to min  $500\text{ }^{\circ}\text{C}$  ( $932\text{ }^{\circ}\text{F}$ ))

### Magnetic Probes

Attached directly to ferrous products

**PA0995** MicroMag air PTFE

**PA0973** MicroMag surface PTFE

**PA0055** Offset magnet air PTFE cable

**PA0053** Offset magnet surface PTFE

### Clip/ Clamp Probes

Attached directly to non-ferrous products

**PA0021** Clip air PTFE

**PA0011** Clip surface PTFE

**CS3191/2, 4 & 6** channel probe clamp

**PA2051** Probe ID tags

**CC0049** Soft carry bag

## Fluke Process Instruments

### EMEA

Cambridge, UK  
Tel: +44 1223 652 400  
sales@flukeprocessinstruments.co.uk

### Americas

Derry, NH USA  
Tel: +1 603 637 2680  
sales@flukeprocessinstruments.com

### China

Beijing, China  
Tel: +86 10 6438 4691  
sales@flukeprocessinstruments.com.cn

### Asia East and South

India Tel: +91 22 2920 7691  
Singapore Tel: +65 6799 5596  
sales.asia@flukeprocessinstruments.com

### Worldwide Service

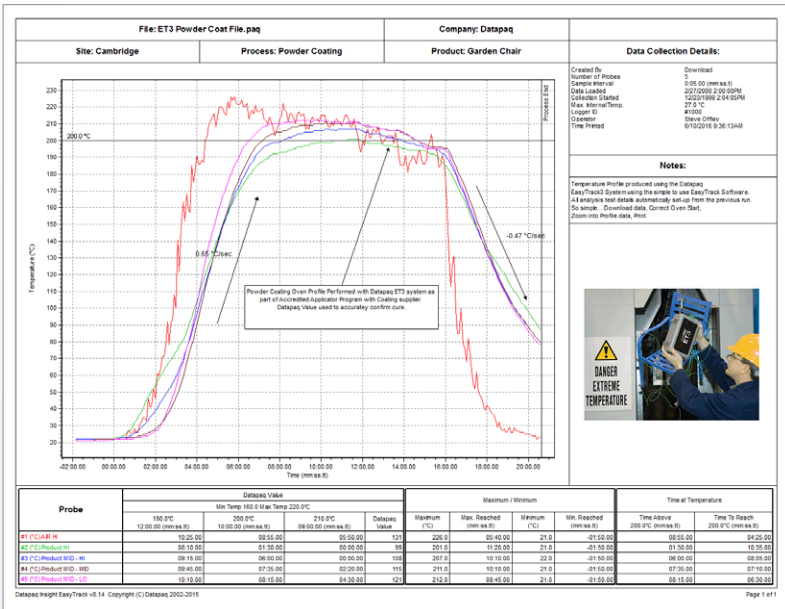
Fluke Process Instruments offers services, including repair and calibration. For more information, contact your local office.

[www.flukeprocessinstruments.com](http://www.flukeprocessinstruments.com)

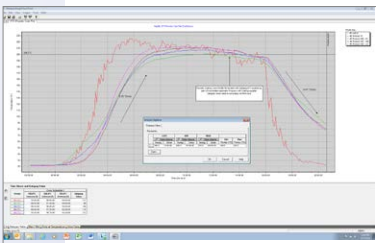
© 2017 Fluke Process Instruments  
Specifications subject to change without notice.  
8/2017 ET3 System DS Rev. A1



# DATAPAQ® EasyTrack® Insight™ Software



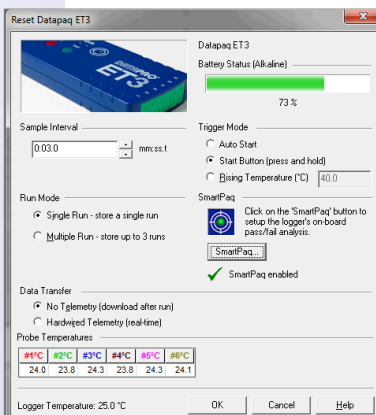
EasyTrack Insight standard single page report



EasyTrack Insight software



ET3 logger SmartPaq\* – “Pass/Fail” indication from logger



EasyTrack Insight Professional Re-set Dialogue



Live software language change

## EASYTRACK INSIGHT & EASYTRACK INSIGHT PROFESSIONAL SOFTWARE

### Easy to Use, Intuitive and Flexible

Key to the value of the DATAPAQ EasyTrack3 oven profiling system is the EasyTrack Insight software. EasyTrack Insight provides the means to both control the data logger operation and, as its name suggests, provide a clear insight into what the temperature profile data you collect is telling you. Insight software has been designed to quickly and efficiently convert raw data into information that helps you understand your process, control it and improve it. Building on the established EasyTrack Insight platform, the new system comes with features making profiling even easier than before. EasyTrack Insight Professional software now offers more sophisticated analysis and reporting, ideal for paint suppliers or coaters trying to drive the quality of the service or product they supply even further.

## NEW

### EASYTRACK INSIGHT

- Live software language change
- Auto software boot on connection of ET3 datalogger
- Slope markers – ramp rate calculation
- Read digital calibration certificate directly from logger
- Interrogate and even send logger diagnostics to tech support
- Digital QRG & logger status tutorials

### EASYTRACK INSIGHT PROFESSIONAL

- Advanced logger reset
- Multiple run – up to 3 back to back runs
- SmartPaq – “pass” or “fail” indication on profile direct from logger at oven exit
- Process files – process template files, making runs quick, efficient and complete
- Enhanced analysis and reporting features give you even more power

\* EasyTrack 3 Professional system only

## TECHNICAL SPECIFICATIONS

	EasyTrack2 Standard & Advanced	EasyTrack3 Standard & Advanced	EasyTrack3 Professional
Function	Insight EasyTrack Original SW5210 V7.0	Insight EasyTrack SW5210 V8.50	EasyTrack Insight Professional SW5210-P V8.50
<b>Basic Functions</b>			
Windows 32 (Explorer file handling)	Yes	Yes	Yes
Selectable probe traces	Yes	Yes	Yes
View temperature data	Yes	Yes	Yes
Max temperature/time reached	Yes	Yes	Yes
Time at temperature	Yes (×3 cure temperatures)	Yes (×3 cure temperatures)	Yes (×3 cure temperatures)
DATAPAQ value “index of cure” basic	Yes (×1 cure schedule)	Yes (×1 cure schedule)	Yes
Logger alarms (low battery, over temp, invalid data)	Yes	Yes	Yes
Logger over temp protection	Yes	Yes	Yes
Logger internal temp download	Yes	Yes	Yes
Calibration expiry warning	Yes	Yes	Yes
Oven start correction “manual”	Yes	Yes	Manual (time/temp)
Process complete marker “manual”	Yes	Yes	Yes & automatic
Probe alignment correction	No	No	Yes manual
Context sensitive help	Yes	Yes	Yes
Full-/process-/mouse zoom	Yes	Yes	Yes
<b>Data Analysis</b>			
Import data	From clipboard	From clipboard	Yes
Analysis alarms	No	No	Yes basic
Graph overlay	Yes (×1)	Yes (×1)	Yes (×3)
<b>Data Reporting</b>			
Standard 1 page report	Yes	Yes	Yes
Print report to PDF	Yes	Yes	Yes
Memos, notes	Yes	Yes	Yes
Image insertion into report	Yes	Yes	Yes
Data export	Yes	Yes	Yes
Paqfile viewer	Yes	Yes	Yes
Paqfile auto E-mail	Yes	Yes	Yes
Download logger internal temperature	Yes	Yes	Yes

Datalogger	ET2 Standard & Advanced	ET3 Standard & Advanced	ET3 Professional
Insight New Functions	SW5210V7.0	SW5210V8.50	SW5210-P V8.50
Multi language interface	No	Yes	Yes
Auto logger detection	No	Yes	Yes
Logger reset - multiple run mode	No	No	Yes with ET3 up to 3
SmartPaq basic	No	No	Yes
Multiple file handling	No	No	Yes
Analysis TAB customization	No	No	Yes
Slope marker – gradient reporting	No	Yes	Yes
Advanced analysis (rise/fall & peak difference)	No	No	Yes
Area under curve	No	No	Yes
DATAPAQ value “index of cure” Adv.	No	No	Yes
DATAPAQ value parameter file (.dvp)	Read only	Read only	Save and read
DATAPAQ value wizard	No	No	Yes
Process file simple	No	No	Yes
Oven zones and distance axis	No	No	Yes (max 6 zones)
Probe map	No	No	Yes
Saved zoom	No	No	Yes
Thermograph/3 D graph	No	No	Yes
Profile report customized	No	No	Yes
Onboard logger calibration	No	Yes	Yes
Onboard quick reference guide	No	Yes	Yes
QRG/animated tutorials			
Onboard service diagnostics	No	Auto read/send	Auto read/send

## Fluke Process Instruments

### EMEA

Cambridge, UK  
Tel: +44 1223 652 400  
sales@flukeprocessinstruments.co.uk

### Americas

Derry, NH USA  
Tel: +1 603 537 2680  
sales@flukeprocessinstruments.com

### China

Beijing, China  
Tel: +86 10 6438 4691  
sales@flukeprocessinstruments.com.cn

### Asia East and South

India Tel: +91 22 2920 7691  
Singapore Tel: +65 6799 5596  
sales.asia@flukeprocessinstruments.com

### Worldwide Service

Fluke Process Instruments offers services, including repair and calibration. For more information, contact your local office.

[www.flukeprocessinstruments.com](http://www.flukeprocessinstruments.com)

© 2016 Fluke Process Instruments  
Specifications subject to change without notice.  
8/2016 ET3 InsightSW DS Rev. A

