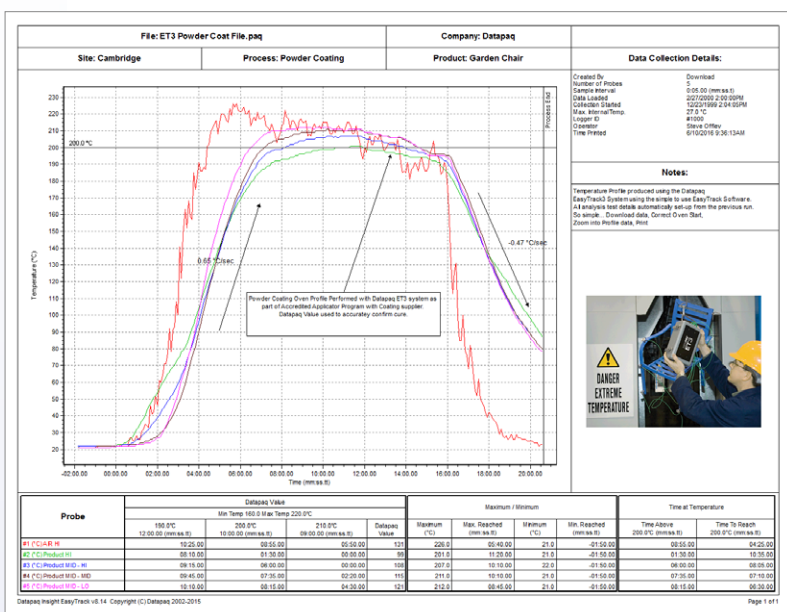


DATAPAQ® EasyTrack® Insight™ Software

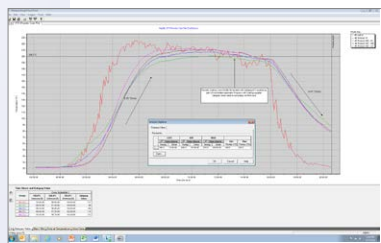


EASYTRACK INSIGHT & EASYTRACK INSIGHT PROFESSIONAL SOFTWARE

Easy to Use, Intuitive and Flexible

Key to the value of the DATAPAQ EasyTrack3 oven profiling system is the EasyTrack Insight software. EasyTrack Insight provides the means to both control the data logger operation and, as its name suggests, provide a clear insight into what the temperature profile data you collect is telling you. Insight software has been designed to quickly and efficiently convert raw data into information that helps you understand your process, control it and improve it. Building on the established EasyTrack Insight platform, the new system comes with features making profiling even easier than before. EasyTrack Insight Professional software now offers more sophisticated analysis and reporting, ideal for paint suppliers or coaters trying to drive the quality of the service or product they supply even further.

EasyTrack Insight standard single page report



EasyTrack Insight software



ET3 logger SmartPaq* – “Pass/Fail” indication from logger

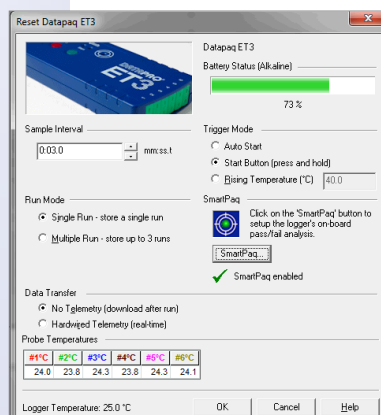
NEW

EASYTRACK INSIGHT

- Live software language change
- Auto software boot on connection of ET3 datalogger
- Slope markers – ramp rate calculation
- Read digital calibration certificate directly from logger
- Interrogate and even send logger diagnostics to tech support
- Digital QRG & logger status tutorials

EASYTRACK INSIGHT PROFESSIONAL

- Advanced logger reset
- Multiple run – up to 3 back to back runs
- SmartPaq – “pass” or “fail” indication on profile direct from logger at oven exit
- Process files – process template files, making runs quick, efficient and complete
- Enhanced analysis and reporting features give you even more power



EasyTrack Insight Professional Re-set Dialogue



Live software language change

* EasyTrack 3 Professional system only

TECHNICAL SPECIFICATIONS

| | EasyTrack2 Standard & Advanced | EasyTrack3 Standard & Advanced | EasyTrack3 Professional |
|--|--|--------------------------------|---|
| Function | Insight EasyTrack Original SW5210 V7.0 | Insight EasyTrack SW5210 V8.50 | EasyTrack Insight Professional SW5210-P V8.50 |
| Basic Functions | | | |
| Windows 32 (Explorer file handling) | Yes | Yes | Yes |
| Selectable probe traces | Yes | Yes | Yes |
| View temperature data | Yes | Yes | Yes |
| Max temperature/time reached | Yes | Yes | Yes |
| Time at temperature | Yes (×3 cure temperatures) | Yes (×3 cure temperatures) | Yes (×3 cure temperatures) |
| DATAPAQ value “index of cure” basic | Yes (×1 cure schedule) | Yes (×1 cure schedule) | Yes |
| Logger alarms (low battery, over temp, invalid data) | Yes | Yes | Yes |
| Logger over temp protection | Yes | Yes | Yes |
| Logger internal temp download | Yes | Yes | Yes |
| Calibration expiry warning | Yes | Yes | Yes |
| Oven start correction “manual” | Yes | Yes | Manual (time/temp) |
| Process complete marker “manual” | Yes | Yes | Yes & automatic |
| Probe alignment correction | No | No | Yes manual |
| Context sensitive help | Yes | Yes | Yes |
| Full-/process-/mouse zoom | Yes | Yes | Yes |
| Data Analysis | | | |
| Import data | From clipboard | From clipboard | Yes |
| Analysis alarms | No | No | Yes basic |
| Graph overlay | Yes (×1) | Yes (×1) | Yes (×3) |
| Data Reporting | | | |
| Standard 1 page report | Yes | Yes | Yes |
| Print report to PDF | Yes | Yes | Yes |
| Memos, notes | Yes | Yes | Yes |
| Image insertion into report | Yes | Yes | Yes |
| Data export | Yes | Yes | Yes |
| Paqfile viewer | Yes | Yes | Yes |
| Paqfile auto E-mail | Yes | Yes | Yes |
| Download logger internal temperature | Yes | Yes | Yes |

| Datalogger | ET2 Standard & Advanced | ET3 Standard & Advanced | ET3 Professional |
|---|-------------------------|-------------------------|-----------------------|
| Insight New Functions | SW5210V7.0 | SW5210V8.50 | SW5210-P V8.50 |
| Multi language interface | No | Yes | Yes |
| Auto logger detection | No | Yes | Yes |
| Logger reset - multiple run mode | No | No | Yes with ET3 up to 3 |
| SmartPaq basic | No | No | Yes |
| Multiple file handling | No | No | Yes |
| Analysis TAB customization | No | No | Yes |
| Slope marker – gradient reporting | No | Yes | Yes |
| Advanced analysis (rise/fall & peak difference) | No | No | Yes |
| Area under curve | No | No | Yes |
| DATAPAQ value “index of cure” Adv. | No | No | Yes |
| DATAPAQ value parameter file (.dpv) | Read only | Read only | Save and read |
| DATAPAQ value wizard | No | No | Yes |
| Process file simple | No | No | Yes |
| Oven zones and distance axis | No | No | Yes (max 6 zones) |
| Probe map | No | No | Yes |
| Saved zoom | No | No | Yes |
| Thermograph/3 D graph | No | No | Yes |
| Profile report customized | No | No | Yes |
| Onboard logger calibration | No | Yes | Yes |
| Onboard quick reference guide | No | Yes | Yes |
| QRG/animated tutorials | | | |
| Onboard service diagnostics | No | Auto read/send | Auto read/send |

Fluke Process Instruments

EMEA

Cambridge, UK
Tel: +44 1223 652 400
sales@flukeprocessinstruments.co.uk

Americas

Derry, NH USA
Tel: +1 603 537 2680
sales@flukeprocessinstruments.com

China

Beijing, China
Tel: +86 10 6438 4691
sales@flukeprocessinstruments.com.cn

Asia East and South

India Tel: +91 22 2920 7691
Singapore Tel: +65 6799 5596
sales.asia@flukeprocessinstruments.com

Worldwide Service

Fluke Process Instruments offers services, including repair and calibration. For more information, contact your local office.

www.flukeprocessinstruments.com

© 2016 Fluke Process Instruments
Specifications subject to change without notice.
8/2016 ET3 InsightSW DS Rev. A

