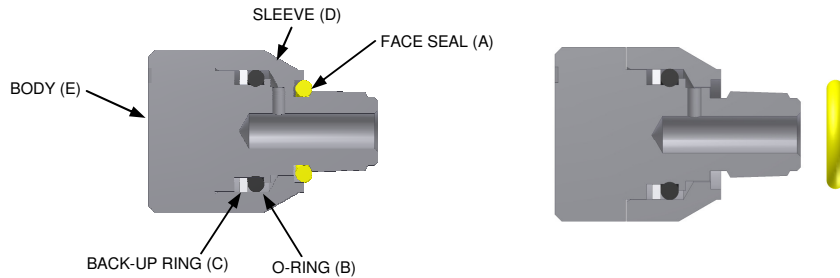


REPLACEMENT INSTRUCTIONS

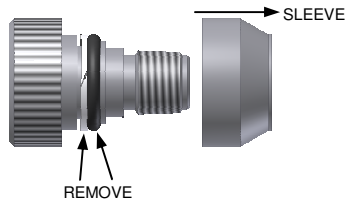
Male Plug and Male Extended Connector Seal Kit Replacement:

DIS-ASSEMBLE:

1. Remove face seal (A) from connector using a sharp tool and save. **Face seals sold separately.**



2. Remove sleeve (D) to expose o-ring (B) and back-up ring (C). Remove and discard old o-ring and back-up ring.

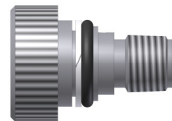


3. Make sure body (E) and sleeve (D) are clean and free of dust and dirt before reassembling new components to the connector.

RE-ASSEMBLE:

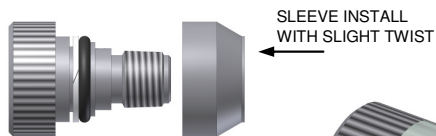
CLEAN ALL PARTS BEFORE RE-ASSEMBLE

4. Install new back-up ring (C) as shown.



5. Lubricate new o-ring (B) with petroleum jelly and install as shown.

6. Replace sleeve (D) using a slight twisting motion to ensure that the seals remain in the ring groove.



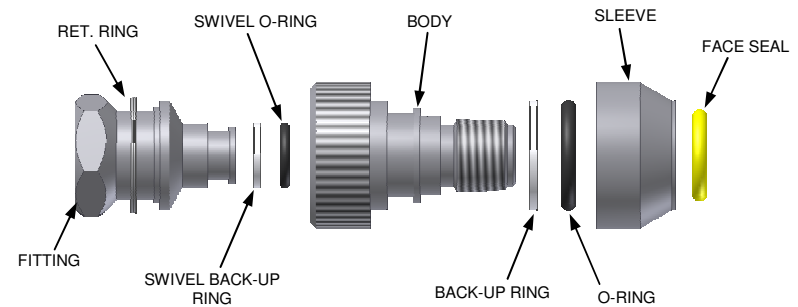
7. Install face seal (A) over threads and into groove.



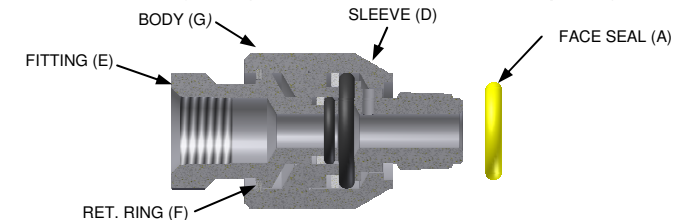
Male Swivel Connector Seal Kit Replacement:

DIS-ASSEMBLE:

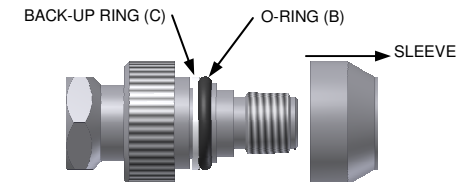
EXPLODED VIEW OF SWIVEL STYLE CONNECTOR FOR REFERENCE:



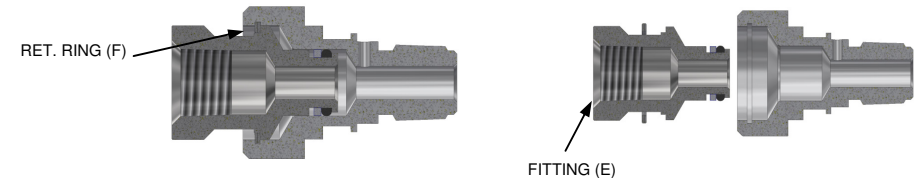
1. Remove face seal (A) from connector using a sharp tool and save. **Face seals sold separately.**



2. Remove sleeve (D) to expose o-ring (B) and back-up ring (C). Remove o-ring (B) and back-up ring (C) and discard.



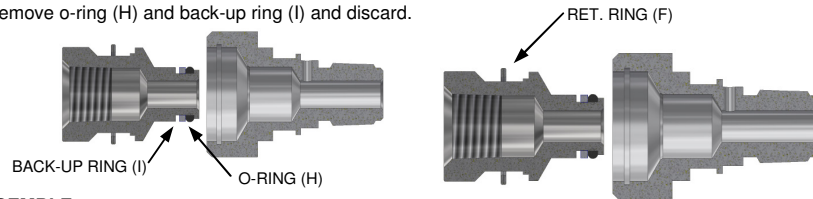
3. Remove ret. ring (F) from groove. (This can be difficult; a sharp, stiff, bent tip pick is required.)



4. Remove fitting (E) from body (G).
5. Remove ret. ring (F) and discard.

REPLACEMENT INSTRUCTIONS

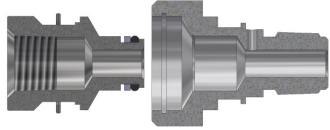
6. Remove o-ring (H) and back-up ring (I) and discard.



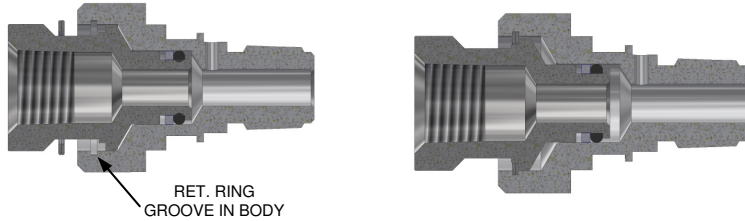
RE-ASSEMBLE:

CLEAN ALL PARTS BEFORE RE-ASSEMBLE

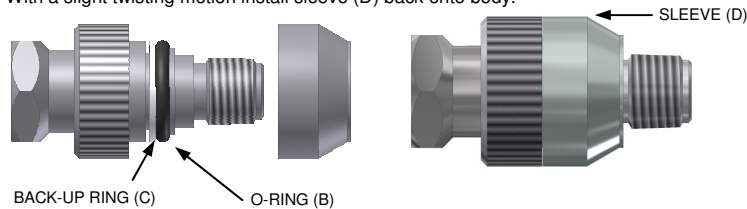
7. Lube and install new back-up ring (I) and new o-ring (H) onto fitting.
8. Install new ret. ring (F) onto fitting.



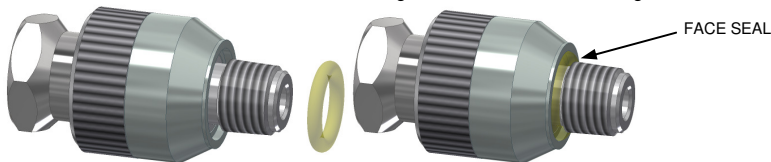
9. Install fitting (E). Use a slight twisting motion as fitting goes into body (G).



10. Install the retaining ring, making sure it is completely seated in its groove in body.
11. Lube and install back-up ring (C) and o-ring (B) in groove on body (G).
12. With a slight twisting motion install sleeve (D) back onto body.



13. Install face seal (A) over threads and into groove, do not lube this o-ring.



CONNECTOR MAINTENANCE:

- A daily, weekly and periodic inspection of the connector by competent person is recommended.
- User must establish a regular interval for maintenance as determined by the user media and operational environment.
- Inspection should include damage to the body missing or loose components, leak tightness, ease of operation, sufficient lubrication, wear, dirt accumulation and damage.
- Inspect threads for wear.
- Use only original **FastTest** spare parts that are designed for the application and are subject to strict quality control. See Warranty.
- Lubricate on regular intervals under normal operating conditions. Lubrication should be compatible with user application.

FasTest, Inc. Product Warranty

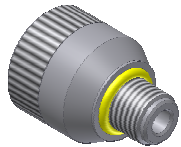
FasTest, Inc. warrants its products against defects of workmanship and/or material for 12 months from the date of the sale by FasTest, Inc. This warranty is void if the product is misused, tampered with or used in a manner that is not in accordance with FasTest, Inc. recommendations and/or instructions. FasTest, Inc. is not liable for consequential or other damages including, but not limited to, loss, damage, personal injury, or any other expense directly or indirectly arising from the use of or inability to use its products either separately or in combination with other products. ALL OTHER WARRANTIES EXPRESSED OR IMPLIED, WHETHER ORAL OR WRITTEN, INCLUDING BUT NOT LIMITED TO WARRANTIES OR MERCHANTABILITY OR FITNESS FOR A PARTICULAR PURPOSE ARE EXPRESSLY EXCLUDED.

Remedy under this warranty is limited to replacement of the product or an account credit in the amount of the original selling price, at the option on FasTest, Inc. All allegedly defective products must be returned prepaid transportation to FasTest, Inc. along with information describing the products performance, unless disposition in the field is authorized in writing by FasTest, Inc.

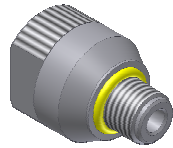
REPLACEMENT INSTRUCTIONS

MITR *TwistMate* Internal Seal Kit Replacement Instructions.

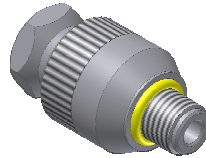
Description: Internal Seal and Back-Up Ring Replacement Instructions for NPT, JIC and SAE O-Ring Boss Connectors.



MALE PLUG
CONNECTOR



MALE EXTENDED
CONNECTOR

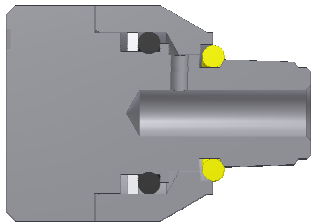


MALE SWIVEL
CONNECTOR

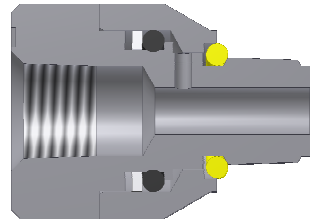
Please thoroughly read the following two steps on properly replacing seals and back-up rings on MIT Connectors.

1. Male Plug and Male Extended Connector Internal Seal Replacement.
2. Male Swivel Connector Internal Seal Replacement.

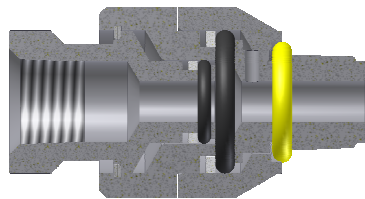
*FACE SEALS SOLD
SEPARATELY!*



PLUG CROSS-SECTION



MALE EXTENDED CROSS-SECTION



MALE SWIVEL CROSS-SECTION

WARNING: If instructions are not clear or components are missing, contact factory before using connector.

TwistMate