



DUAL LTE / DUAL  
WI-FI MOBILE  
ACCESS ROUTER



# DIGI TRANSPORT WR64

High performance cellular router with dual redundant communications for complex transit and transportation systems

Ideal for challenging transportation and mobile environments, Digi TransPort® WR64 is a dual cellular LTE-Advanced router with true enterprise class routing, security, firewall and integrated VPN. It offers a flexible interface design with an integrated Wi-Fi access point, USB, serial and 4-port Ethernet switch, as well as a variety of configuration options including GNSS and Bluetooth®.

Internet access for riders is managed securely and without impact to onboard bus systems. Triple carrier aggregation on each cellular interface can be combined to deliver up to 1.2 Gbps to passengers. Onboard systems retain priority and any remaining bandwidth is made available to Internet traffic.

A captive portal and splash page enable term acceptance, targeted messaging and agency branding. Standard HTTP/DNS redirect can be used to block malware and unwanted content through popular 3rd party service providers or an agency server.

Reliable powering circuitry supporting 9-36 VDC input with ignition sense for direct integration into vehicles power source. Dual cellular and Wi-Fi modules provide true segmented traffic flow of private and public data for fare collection, CAD/AVL data, camera log backhaul and passenger Wi-Fi access.

## FEATURES AND BENEFITS

- Segmented private vs. public data communication across dual 600 Mbps Cat 11 cellular modules
- Video and vehicle data offload over 1.7 Gbps 802.11ac Wi-Fi backhaul
- Passenger Wi-Fi over 867 Mbps 802.11ac access point
- Wired Gigabit Ethernet (4-port) for onboard systems
- Future-built with powerful quad-core 1.91 GHz 64-bit CPU
- Cryptographic co-processor with secure key generation and storage

## RELATED PRODUCTS



Digi WR54



Digi TransPort®  
WR31



Digi TransPort®  
WR44 RR

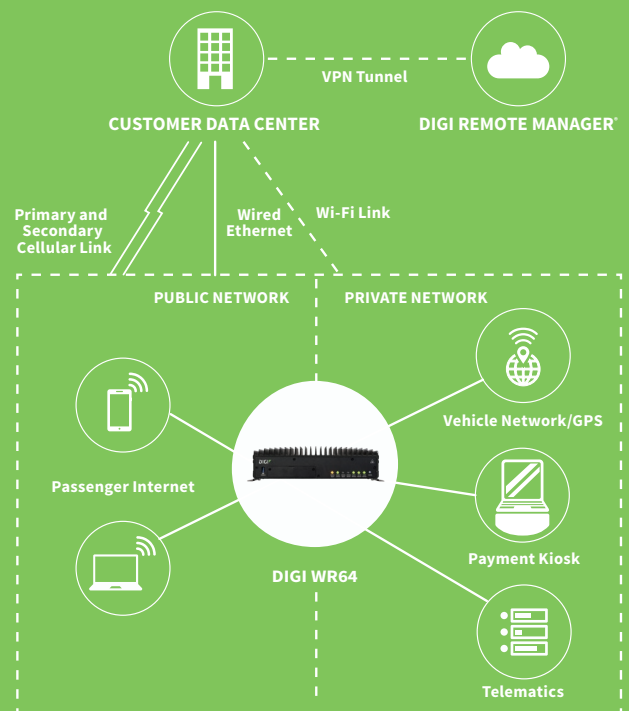


Accessories



Digi Remote  
Manager®

## APPLICATION EXAMPLE



## SPECIFICATIONS

## DIGI TRANSPORT® WR64

## WIRELESS INTERFACES

## WWAN\*

<b>DUAL MODULES GLOBAL LTE-ADVANCED</b>	LTE FDD : 700 (B12,B13,B17, B28, B29) / 800 (B20) / 850 (B5, B26) / 900 (B8) / 1700AWS (B4, B66) / 1800 (B3) / 1900 (B2, B25) / 2100 (B1) / 2300 (B30) / 2600 (B7) LTE TDD : 2300 (B40) / 2500 (B41) / 2600 (B38) 3G (HSPA): 850 (B5), 900 (B8), 1700AWS (B4), 1800 (B3), 1900 (B2), 2100 (B1) Transfer rate (max): 600 Mbps down, 75 Mbps up per module
<b>CONNECTOR</b>	2 x 50 Ω SMA per module (center pin: female)
<b>SIM SLOTS</b>	2, Mini-SIM (2FF) per module (4 total)
<b>SIM SECURITY</b>	SIM slot cover plate included

## WI-FI

<b>DUAL MODULES</b>	Private backhaul: 4 x 4 MU-MIMO 5 GHz 802.11 a/n/ac Wave 2, 1.733 Gbps (max) Public Wi-Fi: 2 x 2 MIMO 2.4/5 GHz 802.11 a/b/g/n/ac, 867 Mbps (max)
<b>HOTSPOT</b>	Captive portal, customizable splash page
<b>AUTHENTICATION</b>	Basic ToS acceptance, Enterprise RADIUS
<b>3RD PARTY SERVICES</b>	Content filtering, embedded advertising
<b>MODES</b>	Up to 4 access points and 1 client per Wi-Fi module (8+2 total)
<b>SECURITY</b>	None, WPA/WPA2-Personal, WPA/WPA2-Enterprise
<b>CONNECTORS</b>	Private Backhaul: 4 x 50 Ω RP-SMA (center pin: male) Public Wi-Fi: 2 x 50 Ω RP-SMA (center pin: male)

## GPS

<b>TECHNOLOGY</b>	Multi-constellation: concurrent reception of up to 2 GNSS (GPS, Galileo, GLONASS, BeiDou)
<b>SENSITIVITY</b>	-163 dB
<b>PROTOCOL</b>	NMEA 0183 V2.3 sentence output
<b>CONNECTOR</b>	1 x 50 Ω SMA (Center pin: female); +3.3 VDC active antenna drive

## HARDWARE

## SERIAL

<b>PORTS / CONNECTOR</b>	1 RS-232; DB-9 male
--------------------------	---------------------

## ETHERNET

<b>PORTS / CONNECTOR</b>	4; RJ-45
<b>STANDARD</b>	IEEE 802.3; 10/100/1000 Base-T

## USB

<b>PORTS</b>	3
<b>STANDARD</b>	USB 3.0 , Type A

## MEMORY

<b>RAM</b>	2 GB
<b>FLASH</b>	8 GB (CFast card)

## SOFTWARE AND MANAGEMENT

<b>PROTOCOLS</b>	IPv4/IPv6, DMNR, QoS, NTP, Dynamic DNS, Syslog
<b>SECURITY</b>	Stateful firewall, VPN (IPsec and OpenVPN), PKI and RADIUS
<b>REMOTE MANAGEMENT</b>	Digi Remote Manager® (cloud based); SNMP v1/v2c/v3
<b>LOCAL MANAGEMENT</b>	Web interface (HTTP/HTTPS); CLI (SSH, serial port)
<b>MANAGEMENT/ TROUBLESHOOTING TOOLS</b>	Protocol Analyzer with PCAP for Wireshark, event and system logging (with Syslog), accessible from Digi Remote Manager, SFTP or SCP
<b>PROGRAMMING TOOLS/ ENVIRONMENTS</b>	Python v3.5

## POWER

<b>INPUT</b>	9-36 VDC, 12/24 VDC vehicle rated, cold-crank down to 6 VDC
<b>DELAYED SHUTDOWN</b>	Configurable power down following ignition off indication

## ENVIRONMENTAL

<b>PHYSICAL</b>	260 mm x 196 mm x 67 mm (10.2 in x 7.8 in x 2.6 in)
<b>STATUS LEDS</b>	Power, WWAN (signal, service) per module, Wi-Fi service (per module), GNSS service, LAN (link, activity)
<b>ENCLOSURE IP40</b>	Aluminum alloy
<b>MOUNTING</b>	Flexible mounting options

\*Transfer rates are network operator dependent

## SPECIFICATIONS

## DIGI TRANSPORT® WR64

### ENVIRONMENTAL

OPERATING TEMPERATURE	-30° C to 70° C (-22° F to 158° F)
STORAGE TEMPERATURE	-40° C to 85° C (-40° F to 185° F)
RELATIVE HUMIDITY	0% to 95% (non-condensing) @ 25° C (77° F)

### APPROVALS

CELLULAR	PTCRB, AT&T, Verizon
SAFETY	UL 60950/EN62368, CSA 22.2 No. 60950
EMISSIONS/IMMUNITY	CE, FCC Part 15 Class B, EN55024, EN55032 Class B, EN301489-1/-17
INDUSTRY	MIL-STD 810G (temperature, humidity, vibration, shock, dust) Vehicle-grade certifications: E-Mark (E13), SAE J1113-2 / J1455, ISO 7637-2/3, ISO 10605, ISO16750-2 load dump

### WARRANTY

PRODUCT WARRANTY	3-year product warranty
------------------	-------------------------

## PRODUCT IMAGES

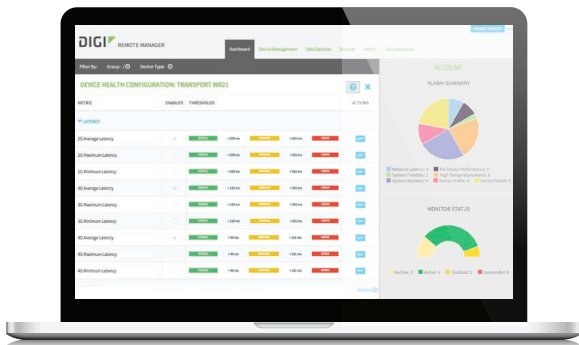
### FRONT



### BACK



## DIGI REMOTE MANAGER®



### CAPABILITIES

- Centralized management of remote devices over 3G/4G/LTE
- Define standard configurations and automatically monitor individual devices for PCI security compliance
- Report and alert on performance statistics, including connection history, signal quality, latency, data usage and packet loss
- No servers or applications to operate and maintain
- Complete tasks for your entire device network in minutes
- Edit configurations and update firmware for your individual devices or groups
- Monitor the status and location of your remote device via a web browser
- Activate or deactivate cellular lines and monitor data to ensure you never incur overage charges

### INFRASTRUCTURE

- Hosted in a commercial-grade SAS 70-certified environment
- Superior availability, operating to 99.9% or greater
- Open APIs available to support application development

### SECURITY

- Certified SSAE-16 facilities
- Over 175 security controls in place to protect your data
- Enables compliance with security frameworks like PCI, HIPAA, NIST and more
- Earned SkyHigh's Cloud Trust Program highest ranking of Enterprise-Ready

PART NUMBERS*	DESCRIPTION
WR64-A121	Digi TransPort WR64 - dual LTE, dual Wi-Fi, worldwide

PART NUMBERS	ACCESSORIES*
76002076	AC power supply - 12 VDC - 3-pin power connector
76002069	Accessory kit - TransPort WR64
76000826	Cable - Ethernet, RJ-45 to RJ-45, 2 m

\*Sold separately, unless otherwise noted.

FOR MORE INFORMATION  
PLEASE VISIT **DIGI.COM**

**DIGI SERVICE AND SUPPORT** / You can purchase with confidence knowing that Digi is always available to serve you with expert technical support and our industry leading warranty. For detailed information visit [www.digi.com/support](http://www.digi.com/support).

© 1996-2020 Digi International Inc. All rights reserved.  
All trademarks are the property of their respective owners.

91004152  
B3/620

**DIGI INTERNATIONAL WORLDWIDE HQ**  
877-912-3444 / 952-912-3444 / [www.digi.com](http://www.digi.com)

**DIGI INTERNATIONAL GERMANY**  
+49-89-540-428-0

**DIGI INTERNATIONAL JAPAN**  
+81-3-5428-0261 / [www.digi-intl.co.jp](http://www.digi-intl.co.jp)

**DIGI INTERNATIONAL SINGAPORE**  
+65-6213-5380

**DIGI INTERNATIONAL CHINA**  
+86-21-50492199 / [www.digi.com.cn](http://www.digi.com.cn)

