

MARATHON PRODUCTS, INC.



PRODUCTS, INC.

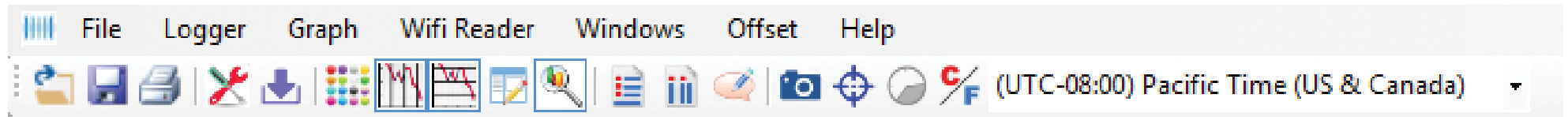


Using Maxi-Thermal2 Software with The MaxiLog-Hx Temperature Data Logger

You will need to **“Run As Administrator”** when you install the MaxiThermal Software.



Understanding the Menu Bar



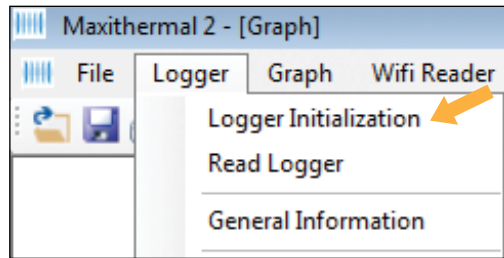
- | | | | | | | | | | | | | | | | | | |
|-------------|-------------|----------------------------------|-------------------------|---------------|-------------------------------|---------------------------------|-----------------------------------|----------------------|---------------------|------------|--------------|-----------------|----------------------------|---------------------|---------------------------|------------------------------------|--------------|
| 1 | 2 | 3 | 4 | 5 | 6 | 7 | 8 | 9 | 10 | 11 | 12 | 13 | 14 | 15 | 16 | 17 | 18 |
| 1 Open File | 2 Save File | 3 Print currently displayed file | 4 Logger Initialization | 5 Read Logger | 6 Change color of graph lines | 7 Show/Hide vertical grid lines | 8 Show/Hide horizontal grid lines | 9 Change Graph Title | 10 Show/Hide Legend | 11 Summary | 12 View Data | 13 Edit Comment | 14 Copy graph to clipboard | 15 View graph point | 16 Show/Hide Elapsed Time | 17 Change units Celsius/Fahrenheit | 18 Time Zone |

QUICK START GUIDE

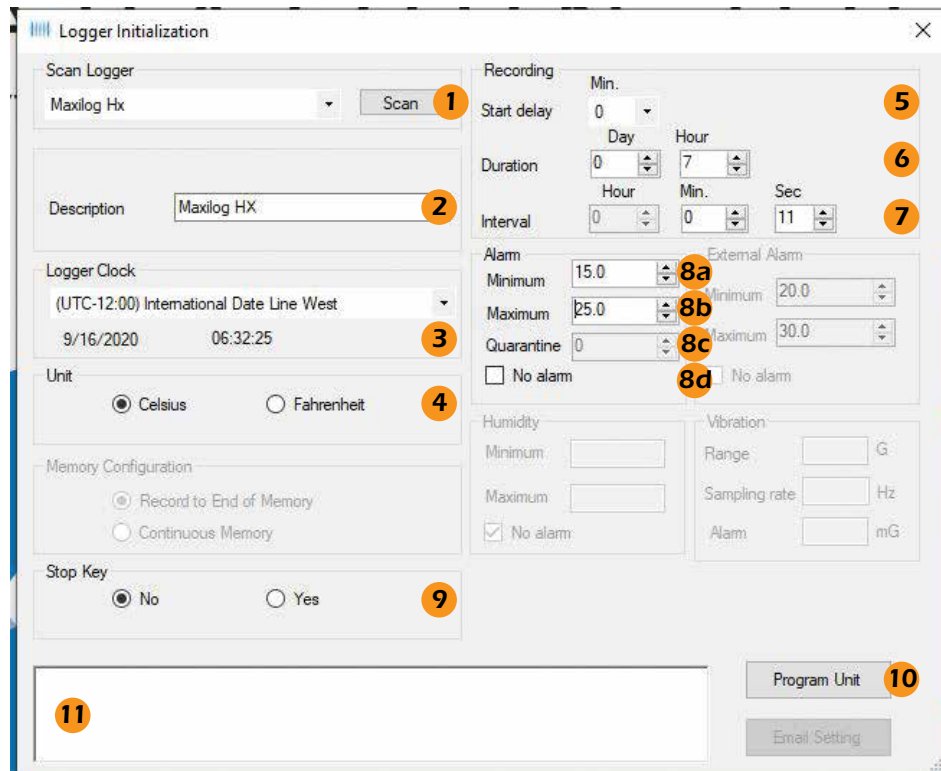
Programming The Logger

Begin by starting the MaxiThermal software, connect the USB cable, then connect the Marathon data logger.

On the menu bar select **Logger / Logger Initialization** in the drop-down menu. The Logger Initialization Window will open.



1. If more than one logger is connected, use the dropdown menu to choose which logger to program. If the logger was connected after opening the **Logger Initialization** window, use the **Scan** button to find it..
2. For **Description**, enter a Descriptive name for the recording.
3. For **Logger Clock**, select the Time Zone for the logger clock.
4. For **Unit**, select temperature scale, °F = Fahrenheit or °C = Celsius.
5. Select a **Start Delay** time if you want a delay after pressing the start button, before starting to record.

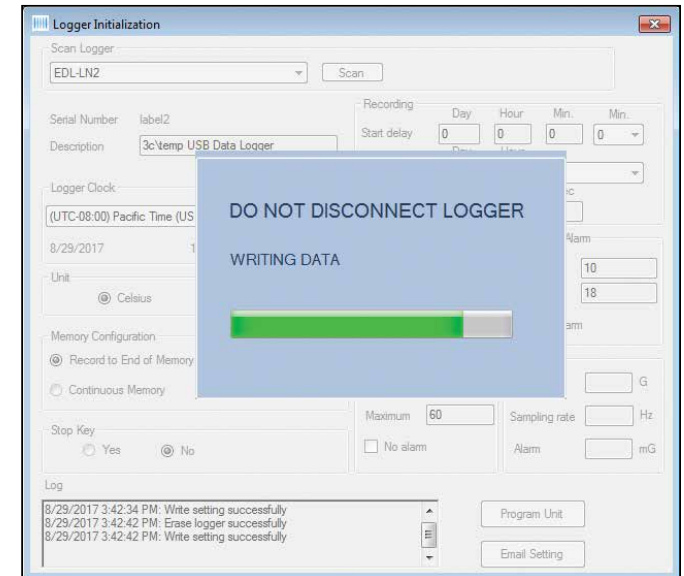


6. Select the **Duration** of recording time. The Sampling **Interval** will be automatically calculated.
7. Or, select the **Interval**, desired. The **Duration** will be automatically calculated.
8. **Alarm**:
 - a. If you want a Low Alarm, enter the temperature for the **Minimum**.
 - b. If you want a High Alarm, enter the temperature for the **Maximum**.
 - c. **Quarantine** allows setting how many measurements taken outside the alarm limits is acceptable. For example, if the measurement interval is 1 minute, and the environment cannot exceed those limits for more than 5 minutes, then you would enter a 5 into the quarantine field. If more than 5 measurements are taken, then "Quarantine" will be shown on the display and reports. Not all logger models support this function.
 - d. If you don't want an Alarm, click the **No Alarm** radio button.
9. Under **Stop Key**, click the **Yes** radio button to allow the logger to be stopped manually (by holding down the start button for 4 seconds while the logger is recording). To disable this feature, click on the **No** radio button.
10. Click **Program Unit** to write the new configuration to the logger.

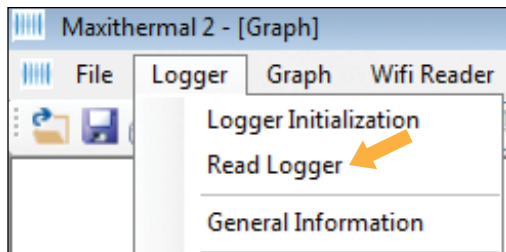
The progress bars will appear and **Event Log 11** will update with "Write successful" and "End Settings successful."

The logger is ready to run. To start recording, press and hold the **START** button on the unit until the green light flashes, or the display indicates that the unit is recording.

NOTE: Certain menu items are grayed out because they are not relevant to the MaxiLog-Hx.



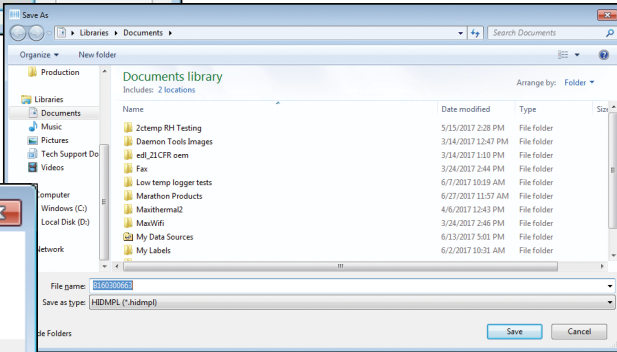
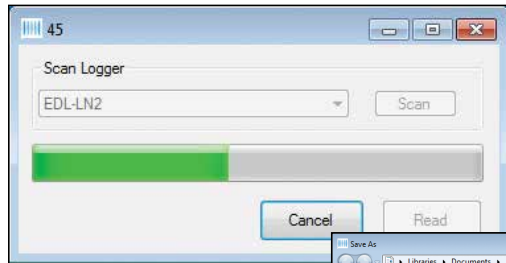
Reading The Logger



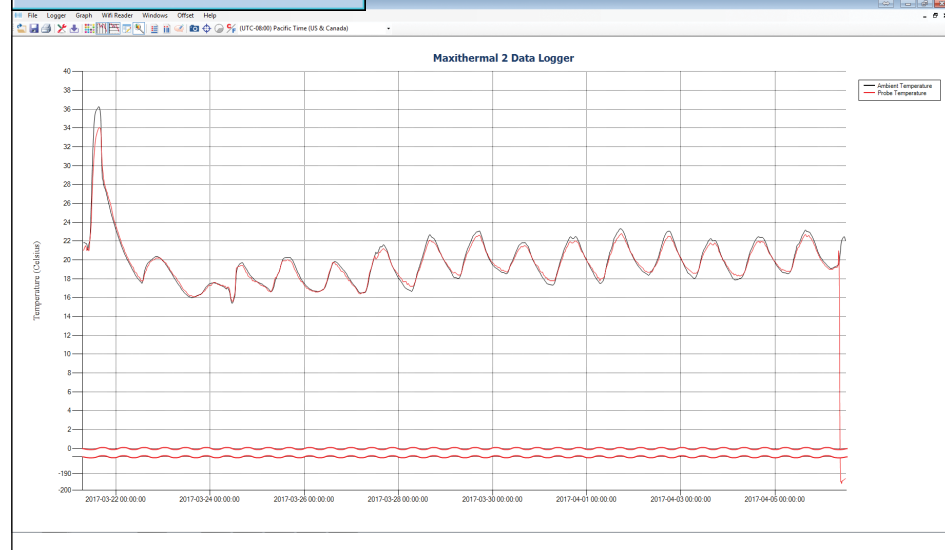
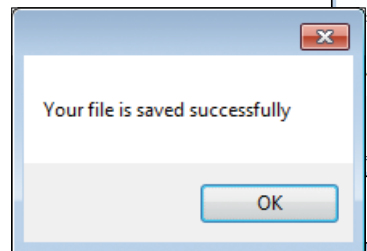
Begin by starting the MaxiThermal software, connect the USB cable, then connect the Marathon data logger.

■ On the menu bar select **Logger / Read Logger** in the drop-down menu.

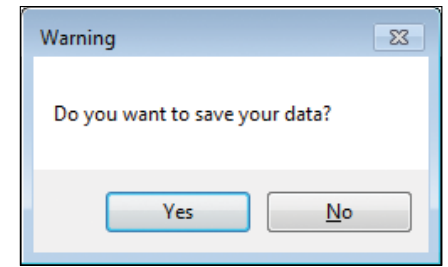
When the progress bar fills up, the Windows file explorer opens to choose a location to save the file. A dialog box will pop up once the location has been chosen letting you know the file has been saved successfully.



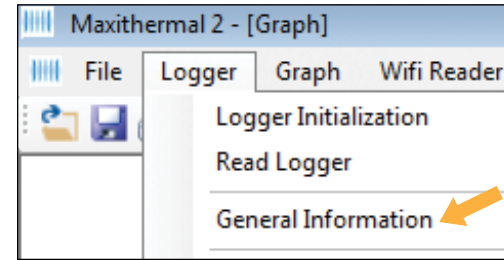
Next, all windows will close automatically and the graph is displayed.



When you close the plot a warning window will open which asks if you want to save the data. Click **Yes** or **No**. The file has already been saved. Unless the file has been modified (e.g. titles changed), click **No**.

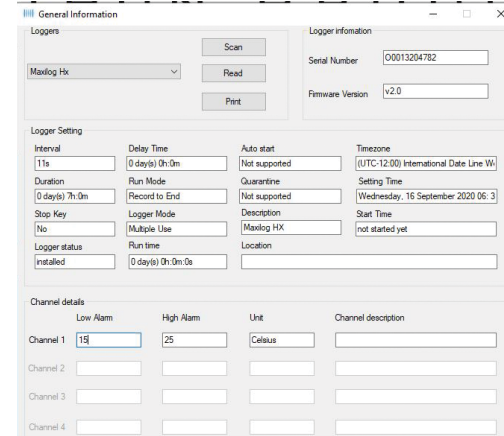
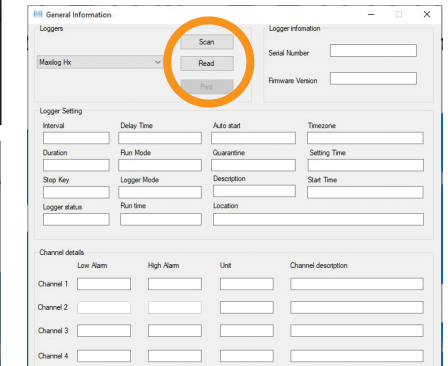


Creating Reports



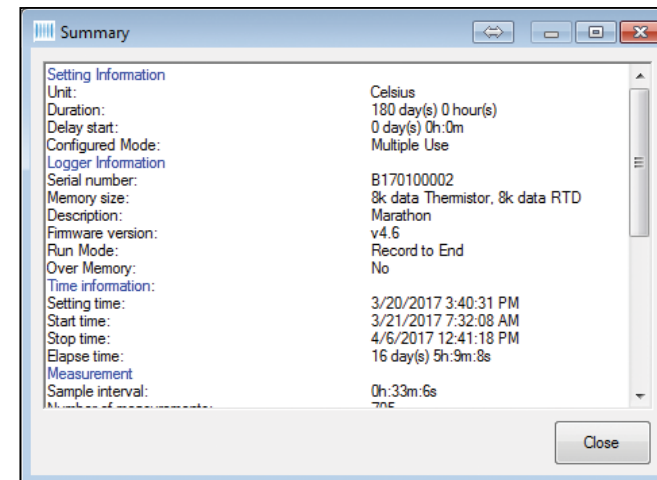
GENERAL INFORMATION

On the menu bar select **Logger / General Information** in the drop-down menu.



The General Information window will open. Click **Read**.

The software will read the logger's information and fill in the fields.



SUMMARY INFORMATION

On the menu bar select **Graph / Summary Information** in the drop-down menu, or click the Summary icon.

The Summary Information window will open where you can scroll through the logger information.