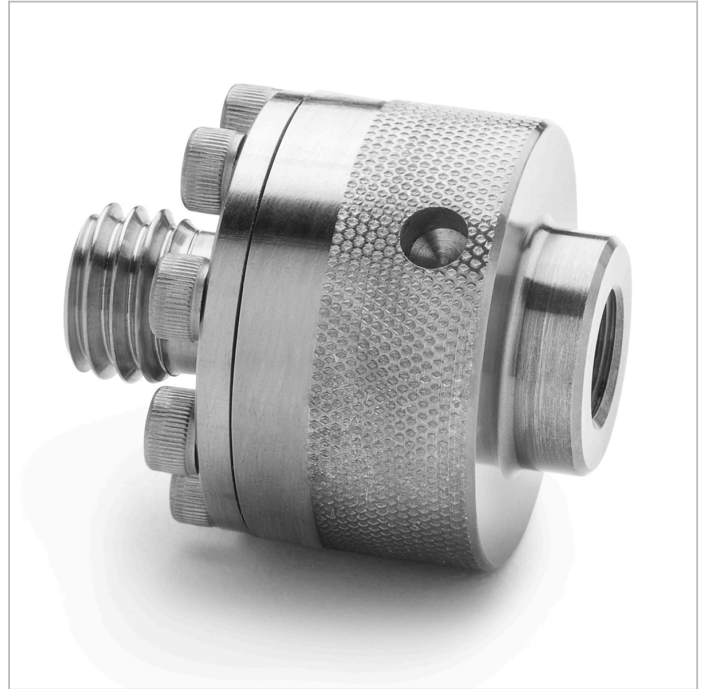


Part No.

XTHA-2TS0-QD

1/4" tube fitting x male Quick-test XT, S.S.

Make a bubble-tight connection to any Swagelok, Parker, Hoke, SSP, Tylok or equivalent tube fitting without a wrench to 15,000 psi



XTHA-2TS0-QD

Specs/Attributes

Country of origin	USA
Dimensions A	0.00 In / 0.00 mm
Dimensions B	0.00 In / 0.00 mm
Has Check Valve	No
Materials	Stainless Steel
Max Pressure	15000 PSI / 1000 bar / 100 MPa
Seal Materials	Teflon, Viton
Connector End 1	1/4" Male Tube Fitting
Connector End 2	Male Quick-test XT