



The EL-SIE

Our latest innovation in data logging

The EL-SIE is our breakthrough USB data logger, compatible with Mac or PC, and with no software needed to install. Just plug the logger into your computer's USB port; configuration and data analysis can all be done within your standard web browser. It's as easy as that!

In this range:



Temperature



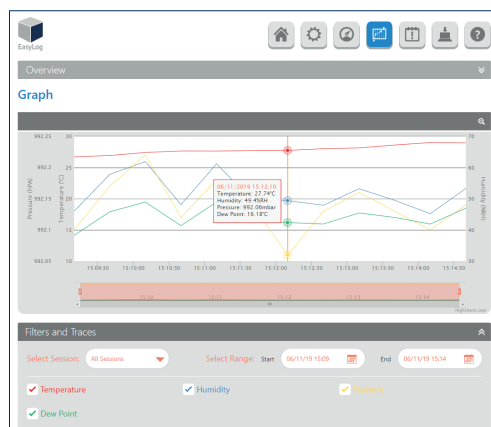
Temp/RH



Pressure

A next-generation data logger in a sleek, metal housing

- The EL-SIE range offers five model variants capable of measuring ambient temperature, humidity and pressure.
- Upload your data to an EasyLog Cloud account for powerful online graphing, analysis and report generation.
- The logger's large, clear display shows current, maximum and minimum readings, plus three coloured LEDs that indicate status at a glance.



▲ EL-SIE Graphing Screen

- Alarm functionality includes cumulative alarms, pre-alarms, delay before alarm triggering, and alarm hold options.
- Store over 1,000,000 readings
- Typical battery life is over one year using standard AAA alkaline batteries.



- **EL-SIE-1** Temperature data logger with display
- **EL-SIE-1+** High-accuracy temperature data logger with display
- **EL-SIE-2** Temperature and humidity data logger with display
- **EL-SIE-2+** High accuracy temperature and humidity data logger with display
- **EL-SIE-6+** High accuracy temperature, humidity, and pressure data logger with display

Next Generation USB Data Logger

EasyLog Cloud

Your Data. Anytime. Anywhere.

Access your vital data from any internet-enabled computer, tablet or mobile device with EasyLog Cloud. From single locations to worldwide operations, the system is perfectly scalable and can run through your existing wireless networks.

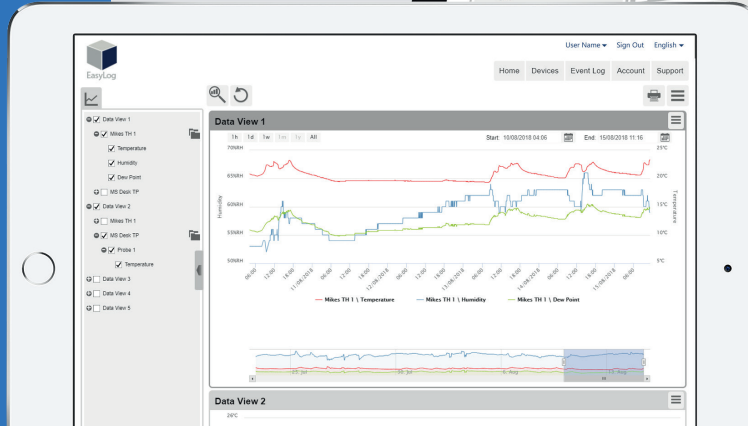
Critical events are notified to specific users in seconds via an alarm system that's easily tailored to your exact requirements.

Data is accessible 24/7 and powerful online tools make it simpler than ever to view, compare and analyse readings. An audit trail is automatically created that includes both system and data events.

System administration features allow you to set up and manage multiple account users, with individually assigned access to specific locations and functions.

Starter and Professional accounts are available, always flexible and with no locked-in contracts.

All EasyLog Cloud data is securely stored at a fully accredited data centre.



EasyLog Cloud App

Available for Android and Apple devices, the EasyLog Cloud app enables you to monitor and manage your wireless sensors on the go.

Key features include:

- Alarm and device status at a glance
- Favourites tab for your most important sensors
- View data, graphs and events
- Change sensor and alarm settings
- Free to download



Cloud-enabled Products

EL-MOTE ▶
Discrete, waterproof wireless data loggers



EL-WIFI ▶
Wireless data loggers with display



EL-SIE ▼
Upload data to the Cloud from the latest range of USB data loggers



The Power of IoT

EL-MOTE

Remote, flexible data logging with years of battery life

The EL-MOTE WiFi data logger range combines an unobtrusive, waterproof design with replaceable measurement probes, up to two channels and 2 years of battery life.

24/7 monitoring and alerts in a simple-to-use package

- Simple device setup using our smartphone App
- Single and dual channel temperature and humidity recording using a choice of replaceable probes
- Configurable high and low alarms with on-board indicator and sounder
- Industry leading battery life of up to 2 years
- Discreet design with waterproof enclosure
- View and analyse multiple sensors, including graphing of historic data with EasyLog Cloud



Probes

This two-channel device supports replaceable probes.

Need a new probe? Don't purchase a new EL-MOTE. Probe accessories are available for the full EL-MOTE range.



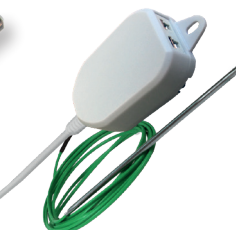
T & T+ Probes
External temperature probe. Standard and higher accuracy options.



TH & TH+ Smart Probes
External temp/humidity smart probe. Standard and higher accuracy options.



TP & TP+ Probes
External thermistor probe. Standard and higher accuracy options.



TC Smart Probe
External thermocouple smart probe. K-Type supplied.

In this range:



Temperature



Temp/RH



Thermistor

EL-WiFi sensors & remote monitoring



The EL-WiFi range of temperature and humidity data loggers provides the capability to remotely monitor any environment. Data is uploaded using a standard WiFi network without the need to physically connect the units to a PC.

Each sensor features a rechargeable battery or can be permanently powered using a USB wall adapter. The large LCD screen displays real-time data, while the button cycles through the maximum and minimum readings.

The range includes data loggers for monitoring temperature, using internal and external temperature probes, and humidity. Sensors are also available in single and dual channel formats.

In this range:



Temperature



Temp/RH



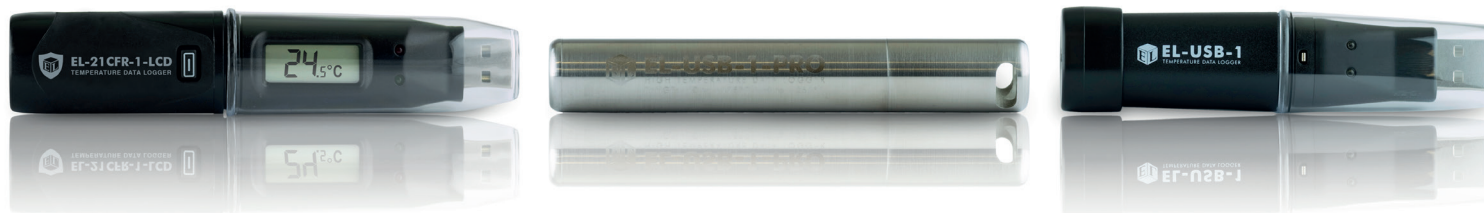
Thermocouple



Thermistor

WiFi Sensors & Remote Monitoring

Standalone Data Logging



EasyLog USB

Simple & low-cost

Lascar's standalone USB data loggers measure a number of parameters including temperature, humidity, voltage, current, 4-20mA, event/count/state and carbon monoxide.

EasyLog USB data loggers connect directly into the USB port of a PC or laptop. The free Windows™ software for set-up and data download is both streamlined and easy to use. Choose a logger name, sample rate, alarm levels and start mode before recording. After data has been collected, it can be graphed or exported to Excel, PDF, graph, data or summary report for further analysis.

Each data logger is supplied with a battery and features red/green LEDs to indicate data logging status. Some models include an LCD and push-button to show the most recent, maximum and minimum readings while logging. Most temperature and temperature & humidity data loggers also provide waterproof protection for outdoor use.

In this range:



Temperature



Temp/RH



Thermocouple



Thermistor



Voltage



Current



Event, State, Count



Carbon Monoxide



Pressure

EasyLog USB software

Intuitive, powerful & free Windows™ control software

Lascar's free data logging control software provides an intuitive and easy-to-use interface for communicating with the EasyLog USB data logger ranges.

Compatible with all Windows™ operating systems, the software employs a wizard format to guide users through the set up and download process.

A powerful graphing module for analysing downloaded data, it also allows export of the data to Microsoft Excel, PDF and jpeg formats.



EL-DataPad

Handheld data collector & programmer

Designed to work with temperature, humidity, thermocouple and thermistor USB data loggers, this touch-screen device allows users to download and analyse results as well as set up and restart data loggers in the field without the need for a PC.

The EL-DataPad can hold information from more than 500 full logging sessions and can be connected to a PC via a micro-USB cable to download data at a later time.

EL-EnviroPad-TC

Thermometer with inbuilt data logging & graphing

The EL-EnviroPad-TC is a robust and easy to use device which records temperature with its attached K-type probe.

The unit has three modes: Data Logging when the unit is left to take and store temperature readings at pre-determined intervals for a desired length of time. Spot Measurement when it can be used as a thermometer to capture one-off temperature readings and lastly Checklist which allows users to create a customised list of measurement items using its accompanying free software.



Standalone Data Logging



▲ EL-GFX-1



▲ EL-GFX-2



▲ EL-GFX-D2



▲ EL-GFX-DTP



EasyLog GFX Advanced data logging

The robust EasyLog GFX range brings a more advanced feature set to the monitoring of temperature and humidity.

EL-GFX products feature an increased memory capacity (250,000 readings per channel), 0.1 digit resolution across all parameters, LED and audible alarms, as well as a graphic display which shows real-time trend graphs and data summaries.

An on-screen menu provides the capability for users to start, stop and restart the data logger in the field.

Connecting to the PC via a micro-USB cable, the EasyLog GFX range uses EasyLog USB software for set up and download with additional functions including conditional start mode, delayed alarm function and probe calibration.

The range also includes dual-channel data loggers for reduced cost per channel.

In this range:



Temperature



Temp/RH



Thermocouple



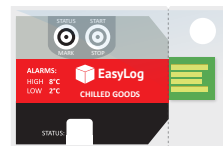
Thermistor



- ▲ EL-CC-1-001 PK10
- EL-CC-1-002 PK10
- EL-CC-1-003 PK10
- EL-CC-1-004 PK10



- ▲ EL-CC-2-001 PK10
- EL-CC-2-002 PK10
- EL-CC-2-003 PK10
- EL-CC-2-004 PK10
- EL-CC-2-005 PK10
- EL-CC-2-006 PK10



- ▲ EL-PDF-1-001 PK10
- EL-PDF-1-002 PK10
- EL-PDF-1-003 PK10
- EL-PDF-1-004 PK10

EasyLog Cold Chain

Lascar's Cold Chain family of loggers provides users with cost effective loggers for all stages of Cold Chain logistics. Available with pre-programmed sample rates and alarms for monitoring a variety of goods, simply press an on-board button to start logging.

Status LEDs indicate whether the unit is in logging mode, an alarm has been activated or the battery is low. Download data by inserting the logger into a PC or laptop to view a graph of the logging session as a CSV file or PDF.

EL-PDF-1 eliminates the need for software with Start and Stop Logging buttons on-board and an auto-generated PDF report when inserted into a USB port.

EL-CC-1: Temperature devices for monitoring Chilled Goods, Frozen Goods and Ripening Goods.

EL-CC-2: Temperature and humidity devices for monitoring Pharmaceutical and Food goods.

EL-PDF-1: Temperature devices for monitoring Chilled Goods, Frozen Goods, Ripening Goods and Ambient Pharmaceutical Goods.
No software required.

*Not the alarm level configurations you were looking for?
We welcome requests for custom configurations.*

In this range:



Temperature



Temp/RH



▲ EL-SGD 43-ATP

▲ EL-SGD 70-ATP

4-Channel, OEM data logging displays

EL-SGD 43-ATP and EL-SGD 70-ATP are four-channel temperature data loggers based on PanelPilotACE technology and ideal for anyone that needs to quickly add temperature monitoring to an existing panel or standalone product. Both the 4.3" or 7" panel mounted display modules include a four-channel thermistor temperature board and four compatible temperature probes.

Both displays are pre-loaded with an advanced logging application which shows real-time readings for all four temperature channels and live trend graphs and gives access to a suite of real-time data analysis information. The loggers can store up to 100,000 readings per channel at sample rates from 15 seconds to 12 hours.

In this range:



Thermistor

Remote Monitoring

When using a PC or laptop to configure and download data just isn't possible, Lascar have a variety of remote options covering a multitude of communication platforms.

Select Bluetooth, NFC or SMS options for seamless, remote communication with your data logger, using one of Lascar's easy to use Apps.

No need for a WiFi signal. Use your smartphone or tablet to configure your logging device, then let it log and use your smartphone or tablet again to collect the data. Simple, easy remote data logging.

In this range:



Temperature



Temp/RH



EasyLog

EL-BT-2

Bluetooth temperature and humidity data logging

The EL-BT-2 data logger measures and stores over half a million temperature and humidity readings. The user can easily set up the logger and view downloaded data remotely on any suitable Android device via Bluetooth connection.

Downloaded data can then be saved, uploaded or emailed. The LCD screen on the device indicates

Bluetooth connection status as well as logger operation. The push button allows cycling of current, minimum and maximum recorded values.

The EL-BT-2 comes with rechargeable battery or can be used with a USB wall charger.



Wireless Alert

WiFi-enabled, wall-mountable temperature monitor



Wireless Alert TP measures temperatures between -40°C (-40°F) and 125°C (257°F), notifying the user via email whenever the temperature rises above or below the user-defined limits. This means that fast, corrective action can be taken to rectify a temperature issue, preventing damage to temperature-sensitive materials, or ensuring building occupant comfort. With easy set-up using the step-by-step guide in the free Wireless Alert App, the device can send out scheduled summary reports detailing minimum, maximum and average temperatures, as well as battery level, number of notifications sent, and the total time spent in alert mode (App Store).

EL-SMS-2G-TP
Temperature monitor with SMS alerts



The battery operated EL-SMS-2G-TP is a temperature alert module communicating daily, weekly or monthly temperature summaries via SMS. Perfect for applications where instant notifications of alarm breaches is vital, high and low level alarms are set using the free Android or Apple App sending text messages to pre-selected phones when an alarm is triggered.

Remote Monitoring

EL-Vaccine Range

The Lascar range of EL-Vaccine monitoring kits come with a digital data logger, a glycol buffered temperature probe, and calibration test certificate. They also follow the appropriate guidelines of Centres for Disease Control and Prevention (CDC) and the NHS.

Added benefit of detachable vaccine probe for greater logging accuracy

All EL-VAC product versions come with a detachable probe in a glycol bottle. Suspending a probe in a sealed glycol bottle helps prevent sudden spikes in air temperature from compromising the readings, mimicking the rate at which vaccines react to temperature changes, providing the most accurate readings, and preventing false alarms.

- ✓ Detachable temperature buffered probe
- ✓ High/low alarms to alert out of range temperatures
- ✓ Display of current, min and max temperature and reset button
- ✓ Low battery indicator
- ✓ Accuracy $\pm 0.1^{\circ}\text{C}$ / $\pm 0.2^{\circ}\text{F}$
- ✓ Over 250,000 readings stored
- ✓ Data loops when memory is full
- ✓ User programmable logging rate
- ✓ Integral magnet to affix logger to outside of storage unit

In this range:



Thermistor

EL-WiFi-VAC

The EL-WiFi-VAC allows remote vaccine monitoring and data collection over a WiFi network, viewable from any internet enabled device including smartphone, tablet or PC using the EasyLog Cloud service. Set-up high and low alarms and receive instant email alerts when temperatures become too hot or cold in the fridge or freezer.

The logger can be battery powered or used with a USB wall adapter.



EL-WiFi-VAC2

The dual channel EL-WiFi-VAC2 can measure two areas at the same time - two areas of the same refrigerator, two refrigerators or perhaps a refrigerator and freezer.

The logger can be battery powered or used with a USB wall adapter.



EL-USB-VAC

This USB-based system allows continual temperature monitoring of refrigerated and frozen vaccines using a simple-to-use data logger and glycol bottle.

Simply name the device, choose samples rates and set high and low alarms using its free and easy-to-use software. Place the glycol bottle in the vaccine refrigerator and place the data logger on the outside of the fridge. View latest, highest and lowest logs from its integral LCD screen. An on-board red LED will flash if an alarm has been breached.

The logger is battery powered.



EL-GFX-VAC2

The EL-GFX-VAC2 is a Vaccine monitoring kit combining a high accuracy USB dual channel data logger with two glycol bottle probes allowing continuous measurement of two environments simultaneously.

The unit stores over 250,000 readings, has an on-screen display showing max, min and last log as well as an on-board graph of the data collected. Buttons allow the user to start, stop and restart the logger in the field and alarm breaches are registered with both LED and audible alarms.

The logger can be battery powered or used with a USB wall adapter.





21 CFR Compliance

Lascar's latest software offering allows users to store data in compliance with the regulations of 21CFR Part 11. As well as the core offerings of Lascar's existing EasyLog software, individual users can now be assigned specific permissions.

The readings collected from the data logger are stored in an encrypted format which cannot be edited. EasyLog 21CFR software provides a full audit trail of activities, with users able to add comments to specific readings before being approved by an authorised user. Electronic signatures are added to all of the reports to show who has started, stopped and approved the session data. The software is compatible with data loggers monitoring temperature, relative humidity and dew point.



▲ EL-21CFR-1-LCD
EL-21CFR-2-LCD
EL-21CFR-2-LCD+

▲ EL-21CFR-TP-LCD
EL-21CFR-TP-LCD+

▲ EL-21CFR-VAC

▲ EL-21CFR-TC



▲ EL-WiFi-21CFR-T
EL-WiFi-21CFR-TH
EL-WiFi-21CFR-TH+

▲ EL-WiFi-21CFR-TP
EL-WiFi-21CFR-TP+

▲ EL-WiFi-21CFR-DTP+



▲ EL-WiFi-21CFR-TC
EL-WiFi-21CFR-DTC



▲ EL-WiFi-21CFR-VAC
EL-WiFi-21CFR-VAC2

EL-21CFR USB

EasyLog 21CFR software is compatible with seven standalone USB devices monitoring standard temperature, relative humidity and dew point; temperature using an external probe; temperature with an on-board sensor and temperature using an external K type thermocouple.

In this range:



Temperature Temp/RH Thermocouple Thermistor

EL-21CFR WiFi

For users seeking a remote option, Lascar's EL-WiFi-21CFR Series provides WiFi-based sensors wirelessly capturing and storing data for access from any internet-enabled device. Products in the range measure temperature (via on board sensor, external thermistor probe or external thermocouple probe) or temperature, relative humidity and dewpoint.

In this range:



Temperature Temp/RH Thermocouple Thermistor





EL-SIE range

		EL-SIE-1 USB temperature logger -18 to +55°C (-0.4 to +131°F) range	Higher accuracy available: EL-SIE-1+
		EL-SIE-2 USB temperature & relative humidity logger -18 to +55°C (-0.4 to +131°F) range	Higher accuracy available: EL-SIE-2+
		EL-SIE-6+ USB temperature, relative humidity and pressure logger -18 to +55°C (-0.4 to +131°F) range	

EL-MOTE range

		EL-MOTE-T WiFi temperature sensor with short external probe Supplied with 1 probe -20 to +54°C (-4 to +129°F) range	Higher accuracy available: EL-MOTE-T+
		EL-MOTE-TH WiFi temperature and humidity sensor with external temp/RH probe Supplied with 1 probe -30 to +60°C (-22 to +140°F) & 0 to 100% RH range	Higher accuracy available: EL-MOTE-TH+
		EL-MOTE-TP WiFi temperature sensor with external thermistor probe Supplied with 1 probe -40 to +125°C (-40 to +257°F) range	Higher accuracy available: EL-MOTE-TP+
		EL-MOTE-DTP Dual channel WiFi temperature sensor with external thermistor probes Supplied with 2 probes -40 to +125°C (-40 to +257°F)	Higher accuracy available: EL-MOTE-DTP+
		EL-MOTE-P-TP 75mm temperature probe with 3 metre cable	Higher accuracy available: EL-MOTE-P-TP+
		EL-MOTE WALL BRACKET Wall mounting bracket for EL-MOTE transmitter	
		EL-MOTE-PSU EL-MOTE mains power adapter	



EL-WiFi range

		EL-WiFi-T WiFi temperature sensor -20 to +60°C (-4 to +140°F) range	Higher accuracy available: EL-WiFi-T+
		EL-WiFi-TH WiFi temperature & humidity sensor -20 to +60°C (-4 to +140°F) & 0 to 100% RH range	Higher accuracy available: EL-WiFi-TH+
		EL-WiFi-TP WiFi temperature sensor with external thermistor probe Supplied with 1 probe -40 to +125°C (-40 to +257°F) range	Higher accuracy available: EL-WiFi-TP+
		EL-WiFi-DTP+ High accuracy dual channel WiFi temperature sensor with external thermistor probes Supplied with 2 probes -40 to +125°C (-40 to +257°F) range	
		EL-WiFi-TC WiFi temperature sensor with external thermocouple probe K type probe provided 0 to +200°C (+32 to +392°F) -270 to +1300°C (-454 to +2372°F) (J, K, N & T-type)	
		EL-WiFi-DTC Dual channel WiFi temperature sensor with external thermocouple probes Supplied with 2 K type probes 0 to +200°C (+32 to +392°F) -270 to +1300°C (-454 to +2372°F) (J, K, N & T-type)	
		EL-WiFi-ALERT WiFi sensor alert module with audible and visual alarm	



Smart Probes

	EL-SP-TH Temperature and humidity smart probe with 2 metre cable
	EL-SP-TH CAL Pre-calibrated high accuracy temperature and humidity smart probe with 2 metre cable
	EL-SP-TH+ High accuracy temperature and humidity smart probe with 2 metre cable
	EL-SP-TH+ CAL Pre-calibrated high accuracy temperature and humidity smart probe with 2 metre cable
	EL-SP-TC Thermocouple smart probe with 1.5M cable
	EL-SP-TC CAL Pre-calibrated Thermocouple smart probe with 1.5M cable



Standard Probes

	EL-MOTE-P-T Short temperature probe	Higher accuracy available: EL-MOTE-P-T+
	EL-P-VAC High accuracy, 3m thermistor type A probe sealed in a Glycol filled bottle	
	EL-P-TP Basic type 2 thermistor probe for use with TP data loggers	
	EL-P-TP+ Type A higher accuracy thermistor probe for use with all Lascar EasyLog TP+ data loggers	
	EL-P-TC-K General purpose K-Type probe for use with all Lascar Thermocouple data loggers	
	EL-P-TC-T-SURFACE T-Type thermocouple probe with rubber tip	
	EL-P-TC-K-SPIKE K Type Thermocouple probe for use with all Lascar Thermocouple data loggers	
	EL-PROBE-EXTENDER-1.5M / EL-PROBE-EXTENDER-3M / EL-PROBE-EXTENDER-5M / EL-PROBE-EXTENDER-10M 1.5, 3, 5 or 10 metre probe extension cable	



EL-USB range

		EL-USB-1 USB Temperature -35 to +80°C (-31 to +176°F) range
		EL-USB-1-PRO USB Industrial temperature -40 to +125°C (-40 to +257°F) range
		EL-USB-2 Higher accuracy available: EL-USB-2+ USB Temperature & relative humidity -35 to +80°C (-31 to +176°F) & 0 to 100% RH range
		EL-USB-3 USB Voltage 0 to 30V d.c. range
		EL-OEM-3 Development kit inc EL-OEM-3: EL-OEM-TEST OEM packaged voltage 0 to 2.4V d.c. measurement range
		EL-USB-TC USB Thermocouple K type probe provided 0 to +200°C (+32 to +392°F) -200 to +732°C (-328 to +1350°F) (J, K & T-type)
		EL-USB-TP-LCD Higher Accuracy Available: EL-USB-TP-LCD+ USB Thermistor probe with LCD -40 to +125°C (-40 to +257°F) range
		EL-EnviroPad-TC Thermometer with inbuilt data logging, 3 data analysis modes K type probe provided 0 to 200°C (+32 to +392°F) -270 to +1300°C (-454 to +2372°F) (J, K, N & T-type)
		EL-USB-RT USB Real-time temperature, relative humidity and dew-point -10 to +60°C (-14 to +122°F) & 0 to 100% RH range

		EL-USB-1-LCD USB Temperature with LCD -35 to +80°C (-31 to +176°F) range
		EL-USB-1-RCG USB Temperature with rechargeable battery -20 to +60°C (-4 to +140°F) range
		EL-USB-2-LCD Higher Accuracy Available: EL-USB-2-LCD+ USB Temperature & relative humidity with LCD -35 to +80°C (-31 to +176°F) & 0 to 100% RH range
		EL-USB-4 USB 4-20 mA Current 4-20 mA d.c. measurement range
		EL-USB-CO Higher Accuracy Available: EL-USB-CO300 USB Carbon monoxide 0 to 1000ppm range
		EL-USB-TC-LCD USB Thermocouple with LCD K type probe provided 0 to +200°C (+32 to +392°F) -200 to +732°C (-328 to +1350°F) (J, K & T-type)
		EL-USB-ACT USB AC and DC Millivolt with current clamp input 0-707mV a.c. & -1000 to 1000mV d.c.
		EL-USB-5 Higher accuracy available: EL-USB-5+ USB Event, count & state Up to 100Hz
		EL-USB-LITE USB Low Cost temperature -10 to +50°C (+14 to +122°F) range



Cold Chain range (Custom configurations are available on request)

		EL-CC-1-001 PK10 (Pack of 10) Temperature - Chilled Goods, +2 to +8°C alarm threshold -30 to +60°C (-22 to +140°F) range
		EL-CC-1-002 PK10 (Pack of 10) Temperature - Frozen Goods, -20 to -16°C alarm threshold -30 to +60°C (-22 to +140°F) range
		EL-CC-1-003 PK10 (Pack of 10) Temperature - Ripening Goods, +12 to +14°C alarm threshold -30 to +60°C (-22 to +140°F) range
		EL-CC-1-004 PK10 (Pack of 10) Temperature - Ambient Pharma, +8 to +25°C alarm threshold -30 to +60°C (-22 to +140°F) range
		EL-CC-2-001 PK10 (Pack of 10) Temp/RH - Chilled Goods, +2 to +8°C alarm threshold -30 to +60°C (-22 to +140°F) 0 to 100% RH range
		EL-CC-2-002 PK10 (Pack of 10) Temp/RH - Frozen Goods, -20 to -16°C alarm threshold -30 to +60°C (-22 to +140°F) 0 to 100% RH range
		EL-CC-2-003 PK10 (Pack of 10) Temp/RH - Ripening Goods, +12 to +14°C alarm threshold -30 to +60°C (-22 to +140°F) 0 to 100% RH range
		EL-CC-2-004 PK10 (Pack of 10) Temp/RH - Ambient Pharma, +8 to +25°C alarm threshold -30 to +60°C (-22 to +140°F) 0 to 100% RH range
		EL-CC-2-005 PK10 (Pack of 10) Temp/RH - Blood Transportation, +1 to +10°C alarm threshold -30 to +60°C (-22 to +140°F) 0 to 100% RH range
		EL-CC-2-006 PK10 (Pack of 10) Temp/RH - Platelets Transportation, +20 to +24°C alarm threshold -30 to +60°C (-22 to +140°F) 0 to 100% RH range
		EL-PDF-1-001 PK10 (Pack of 10) Temperature - Chilled Goods, +2 to +8°C alarm threshold -30 to +60°C (-22 to +140°F) range. No Software Required
		EL-PDF-1-002 PK10 (Pack of 10) Temperature - Frozen Goods, -20 to -16°C alarm threshold -30 to +60°C (-22 to +140°F) range. No Software Required
		EL-PDF-1-003 PK10 (Pack of 10) Temperature - Ripening Goods, +12 to +14°C alarm threshold -30 to +60°C (-22 to +140°F) range. No Software Required
		EL-PDF-1-004 PK10 (Pack of 10) Temperature - Ambient Pharma Goods, +8 to +25°C alarm threshold -30 to +60°C (-22 to +140°F) range. No Software Required



Vaccine monitoring range

		EL-USB-VAC Kit combining a USB data logger with a glycol thermistor probe -40 to +60°C (-40 to +140°F) range
		EL-GFX-VAC2 Kit combining a USB dual channel data logger with two glycol probes -40 to +60°C (-40 to +140°F) range
		EL-WIFI-VAC Kit combining a WiFi data logger with glycol thermistor probe -40 to +60°C (-40 to +140°F) range
		EL-WIFI-VAC2 Kit combining a WiFi dual channel data logger & two glycol probes -40 to +60°C (-40 to +140°F) range
		EL-SMS-2G-VAC SMS Temperature alert device for vaccine monitoring, with App -40 to +60°C (-40 to +140°F)

Remote monitoring range

		EL-BT-2 Bluetooth Temperature & humidity with App -20 to +60°C (-4 to +140°F) & 0 to 100% RH range
		EL-SMS-2G-TP SMS Temperature alert device with App -40 to +125°C (-40 to +257°F) range
		EL-SMS-2G-TP+ SMS Temperature alert device with App higher accuracy -40 to +125°C (-40 to +257°F)
		WIRELESS ALERT TP Temperature monitor with email alerts -40 to +80°C (+/-1) (-40 to +176°F (+/-2))



21CFR Compliant range

	EL-21CFR-1-LCD USB Temperature with LCD -35 to +80°C (-31 to +176°F) range
	EL-21CFR-2-LCD Higher accuracy available: EL-21CFR-2-LCD+ USB Temperature & relative humidity with LCD -35 to +80°C (-31 to +176°F) 0 to 100% RH range
	EL-21CFR-TP-LCD Higher accuracy available: EL-21CFR-TP-LCD+ USB Thermistor probe with LCD -40 to +125°C (-40 to +257°F) range
	EL-21CFR-TC USB Thermocouple data logger K type probe provided 0 to +200°C (+32 to +392°F) -200 to +1350°C (-328 to +2462°F) range (J, K, N & T-type)
	EL-21CFR-VAC Kit combining a USB data logger and glycol bottle thermistor probe -40 to +60°C (-40 to +140°F)
	EL-WiFi-21CFR-T Higher accuracy available: EL-WiFi-21CFR-T+ WiFi Temperature data logging sensor -20 to +60°C (-4 to +140°F) range
	EL-WiFi-21CFR-TH Higher accuracy available: EL-WiFi-21CFR-TH+ Temperature & relative humidity data logging sensor -20 to +60°C (-4 to +140°F) range, 0 to 100% RH range

	EL-WiFi-21CFR-TP Higher accuracy available: EL-WiFi-21CFR-TP+ WiFi Thermistor probe data logger -40 to +125°C (-40 to +257°F) range
	EL-WiFi-21CFR-DTP+ High accuracy dual channel WiFi thermistor probe data logger -40 to +125°C / -40 to +257°F range
	EL-WiFi-21CFR-TC WiFi Thermocouple data logger -200 to +1350°C (-328 to +2462°F) range (J, K, N & T-type)
	EL-WiFi-21CFR-DTC WiFi Dual-channel thermocouple data logger K type probe provided 0 to 200°C (32 to 392°F) -200 to +1350°C (-328 to +2462°F) range (J, K, N & T-type)
	EL-WiFi-21CFR-VAC Kit combining a WiFi data logger and glycol bottle thermistor probe -40 to +60°C (-40 to +140°F) range
	EL-WiFi-21CFR-VAC2 Kit combining a WiFi dual channel data logger and two glycol bottle probes -40 to +60°C (-40 to +140°F) range

EL-GFX range

	EL-GFX-1 USB Temperature with graphic screen -30 to +80°C (-22 to +176°F) range
	EL-GFX-2 Higher Accuracy Available: EL-GFX-2+ USB Temperature & relative humidity with graphic screen -30 to +80°C (-22 to +176°F) & 0 to 100% RH range
	EL-GFX-D2 USB dual channel external temp/RH probe with graphic screen -20 to +60°C (-4 to +140°F) & 0 to 100% RH range
	EL-GFX-TC USB Thermocouple with graphic screen K type probe provided 0 to +200°C (+32 to +392°F) -200 to +1350°C (-328 to +2462°F) (J, K & T-type)
	EL-GFX-DTC USB dual channel thermocouple with graphic screen K type probe provided 0 to +200°C (+32 to +392°F) -200 to +732°C (-328 to +2462°F) (J, K & T-type)
	EL-GFX-DTP USB dual channel thermistor with graphic screen -40 to +125°C (-40 to +257°F) range

4-Channel range

	EL-SGD 43-ATP 4.3" panel mounted display module with capacitive touch screen, a four-channel thermistor temperature board, x4 temperature probes -40°C to +125°C (-40°F to +257°F) range
	EL-SGD 70-ATP 7" panel mounted display module with capacitive touch screen, a four-channel thermistor temperature board, x4 temperature probes -40°C to +125°C (-40°F to +257°F) range

Accessories

	EL-DataPad Handheld programmer and data collector for EL-USB data loggers
	PAD-BOOT-BLACK Protective rubber casing for EL-DataPad and EL-EnviroPad-TC
	EL-CC-BAG Pack of 5 waterproof bags for use when reusing all EL-CC-1 data loggers
	EL-USB-CASE Protective metal case for EL-USB-1
	USB-LINK-IR USB to InfraRed converter
	EL-WiFi-ALERT WiFi Sensor alert module with audible and visual alarm
	EL-WiFi WALL BRACKET Spare wall mount bracket for EL-WiFi sensor units
	BAT 3V6 1/2AA Non-rechargeable 1/2 AA Lithium battery for use with most Lascar data loggers
	BAT 3V6 2/3AA H TEMP Non-rechargeable 2/3 AA Lithium battery for EL-USB-1-PRO
	BATT 3VX5 Pack of 5 non-rechargeable Lithium coin cell battery for EL-USB-LITE
	PSU-5VDC-USB-USA / PSU USB-UK / PSU USB-EU Mains Power Adapter
	USB-CAP-30V Spare Cap for EL-USB-3
	USB-CAP-4-20 Spare cap for EL-USB-4
	USB-CAP-5 Spare Cap for the EL-USB-5



Lascar Electronics Ltd UK
Module House
Whiteparish, Wiltshire
SP5 2SJ
United Kingdom

Sales Tel: +44 (0)1794 884567
Sales Email: sales@lascar.co.uk
Skype: lascaruk



www.lascarelectronics.com/data-loggers

Issue 5 01/2020