

Safety shunts



Designation : safety shunts.

Applications : maintenance, troubleshooting, test, verification, servicing, commissioning of the electrical cabinets and panels of PLC, elevators, EVSE, wind turbines, etc.

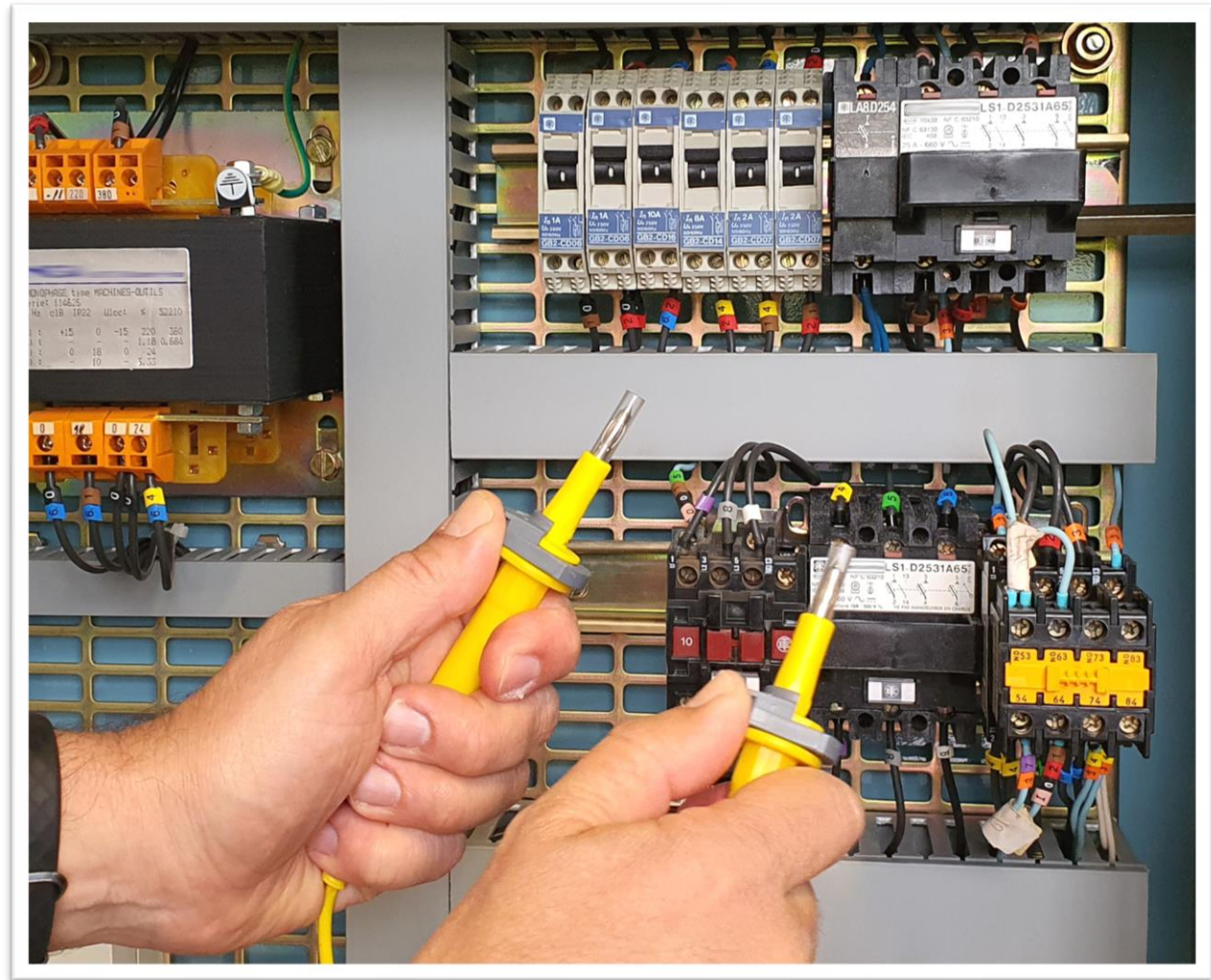
During maintenances, troubleshooting, tests, verifications, servicing, commissioning on the electrical control circuits of programmable logic controllers, electrical cabinets, wind turbine nacelles, electric vehicle charging station, etc. it can be necessary to simulate some electrical defaults, simulate the close of electrical sensors, force the close of electric relays, etc.

As a result, the technicians need to short, shunt, some electrical contacts because to shunt allows to power a contact, link two insulated contacts, etc. These contacts are often terminals, and the technicians operate some leads equipped with tips on each end used to make temporary electrical contacts between the terminals.

Of course these circuits are usually in some hazardous electrical environments, CAT III typically, so an error while reading the electrical diagram, a confusion with two adjacent contacts, an accidental move, etc. can lead to a short-circuit between two high energy contacts and cause injuries and damages !

The risk assessment shows up that the risk is lowered if a fuse is included in the lead used to shunt the contacts. However the fuse does not lower the risk likelihood, it lowers its severity because it blows and stops the short-circuit before making injuries and damages.

That is why Electro-PJP propose its safety shunt ranges, all equipped with removable fuses. These ranges are different from each other by their safety and tip shapes ...



Safety shunts

Designation : safety shunts.

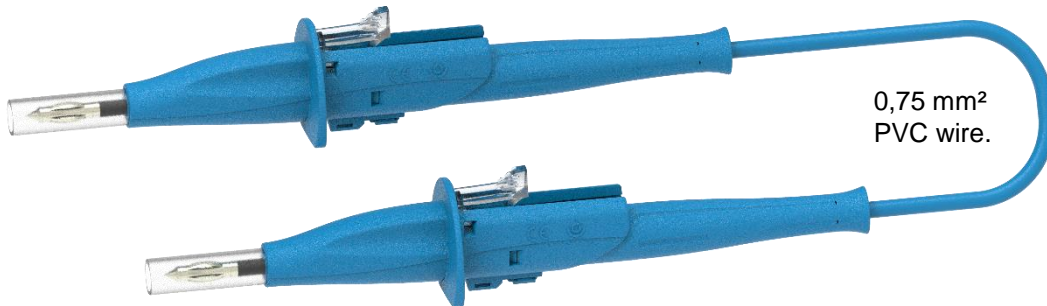
3900Shu0A5-1kV130 Green



0,75 mm²
PVC wire.

Ø4 mm tips. 1000 V AC CAT II / 1000 V AC CAT III safety. 0,5 A AC fuse.

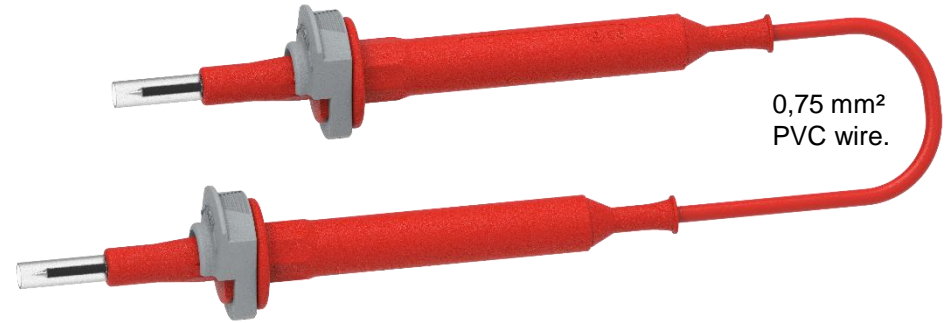
13000Shu0A5-1kV130 Blue



0,75 mm²
PVC wire.

Connecting 4 mm banana male tips. 1000 V AC CAT II safety and controlled IP2X – touchproof. 0,5 A AC fuse.

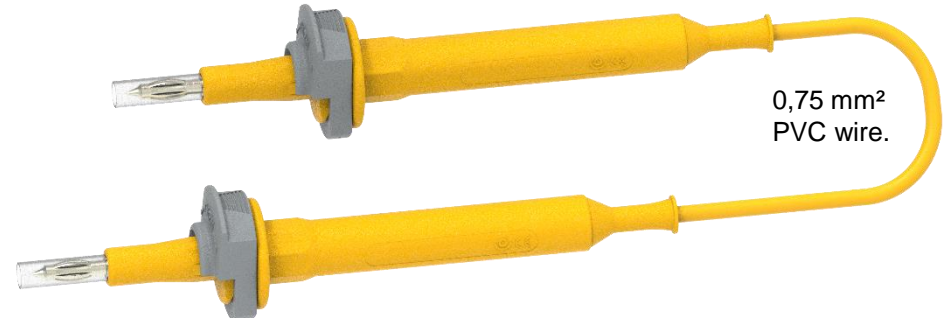
3600Shu6A3-120kA130 Red



0,75 mm²
PVC wire.

Ø2 mm tips. 400 V AC CAT II / 400 V AC CAT III / 400 V AC CAT IV safety and IP2X – touchproof. 6,3 A AC fuse.

5900Shu6A3-120kA130 Yellow



0,75 mm²
PVC wire.

Connecting 4 mm banana male tips. 1000 V AC CAT II safety and IP2X - touchproof. 6,3 A AC fuse.

Safety shunts

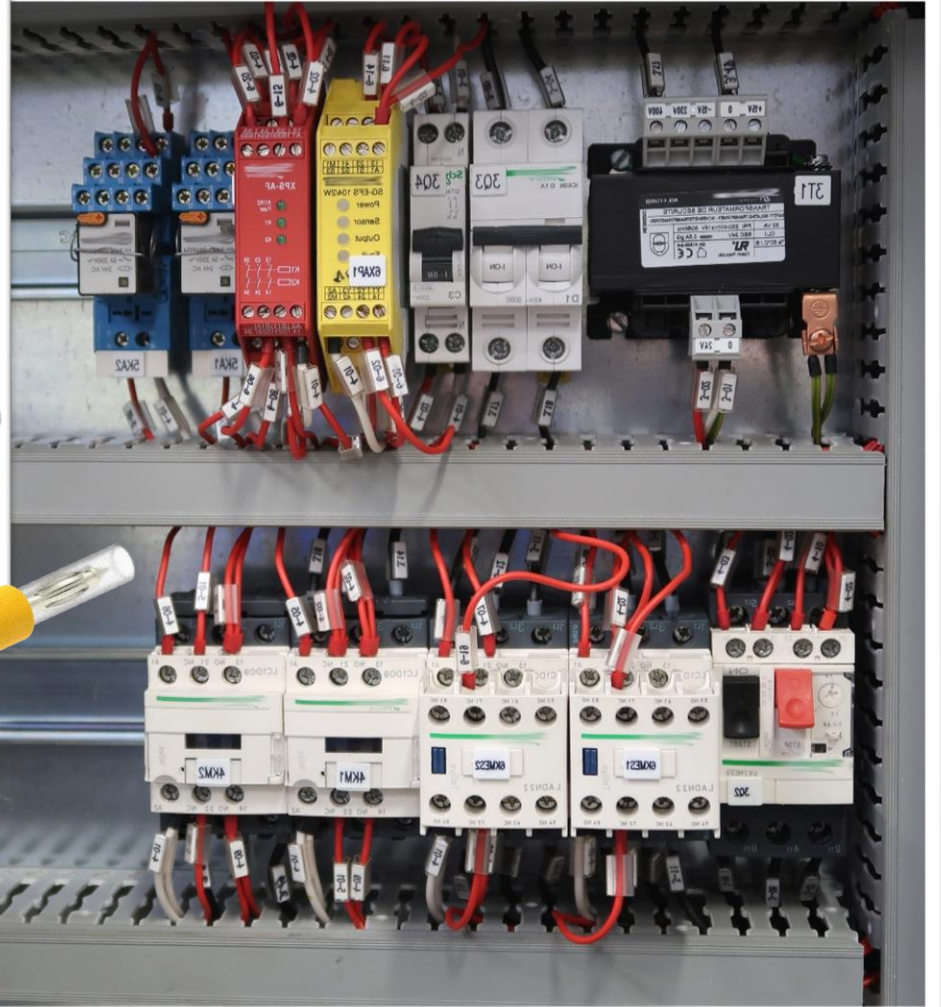
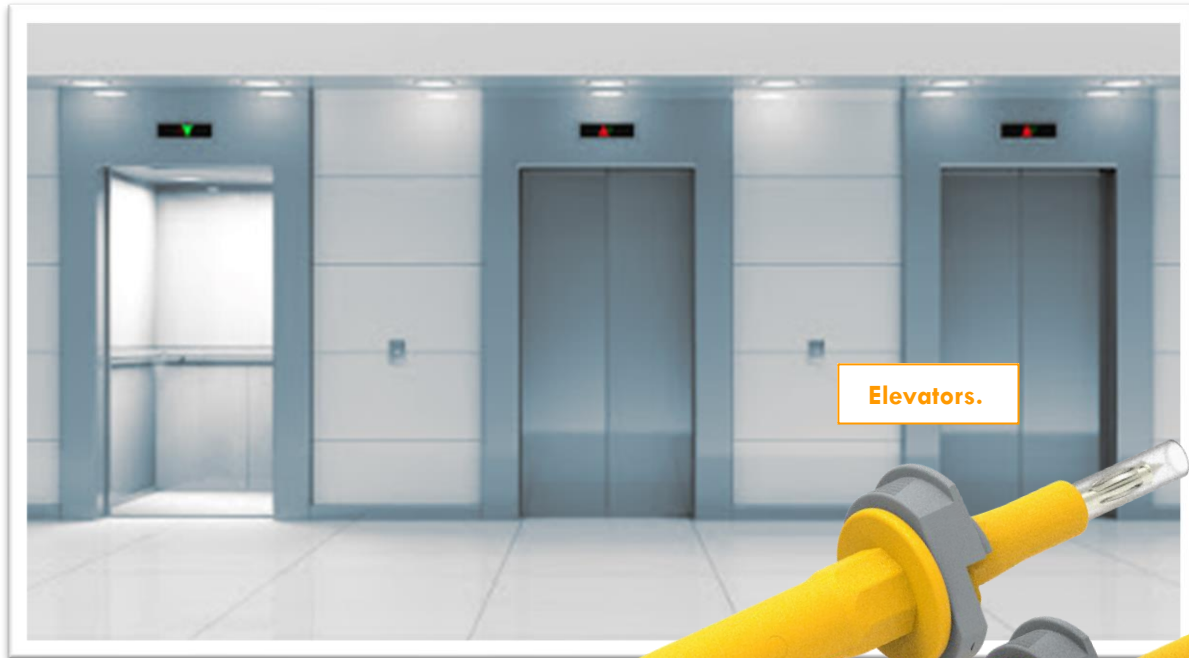
Designation : safety shunts.



Designation.	Safety shunt.									
Stengths.	Competitive. 1000 V AC safety.	IP2X – touchproof. Thin Ø2 mm tip. High breaking capacity fuse.	IP2X – touchproof. Connecting tip. High breaking capacity fuse.	IP2X – touchproof. Controlled retractable sleeve. 1000 V AC safety. Connecting tip.						
Removable fuse.	Current : 0,5 A AC Voltage : 1000 V AC. Breaking capacity : 50 kA.	Current : 6,3 A AC. Voltage : 400 V AC. Breaking capacity : 120 kA.		Current : 0,5 A AC Voltage : 1000 V AC. Breaking capacity : 50 kA.						
Safety according to EN / IEC 61010-031.	1000 V AC CAT II / 1000 V AC CAT III, reinforced insulation, pollution degree 2. No CAT IV.	400 V AC CAT II / 400 V AC CAT III / 400 V AC CAT IV, reinforced insulation, pollution degree 2.	400 V AC CAT II, reinforced insulation, pollution degree 2. No CAT III. No CAT IV.	1000 V AC CAT II, reinforced insulation, pollution degree 2. No CAT III. No CAT IV.						
Safety according to EN / CEI 60529.	No IP2X.	IP2X – touchproof.		IP2X – touchproof. Controlled retractable sleeve.						
Conductive length of the tip.	4 mm.		19 mm.							
Tip diameter	Ø4 mm.	Ø2 mm.	Connecting 4 mm banana male tip.							
Wire.	Number of jackets : two (double isolation and wire wear indicator). Jacket material : PVC. Cross section area : 0,75 mm ² (approx. AWG18). (Available with silicone instead of PVC and with cross section areas 1,00 mm ² , 1,50 mm ² or 2,50 mm ² .)									
Length.	130 cm ~ 51 inches. (Available with other lengths, please contact us.)									
Color.	Black	Red	Yellow	Green	Blue	Brown	Gray	Black	Red	Blue
Part number.	3900Shu0A5-1kV130 Color	3600Shu6A3-120kA130 Color	5900Shu6A3-120kA130 Color	13000Shu0A5-1kV130 Color						

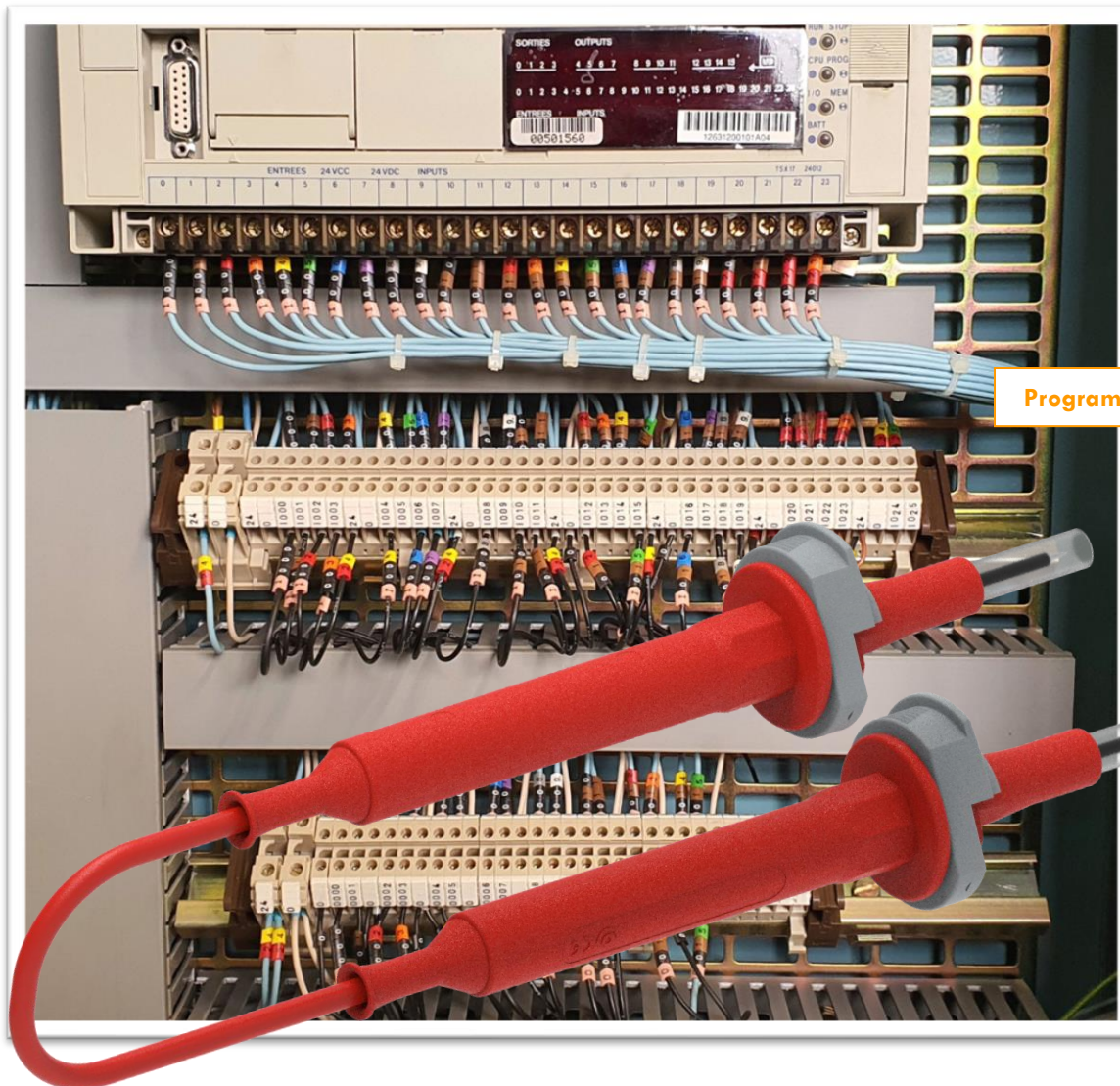
Safety shunts

Designation : safety shunts.

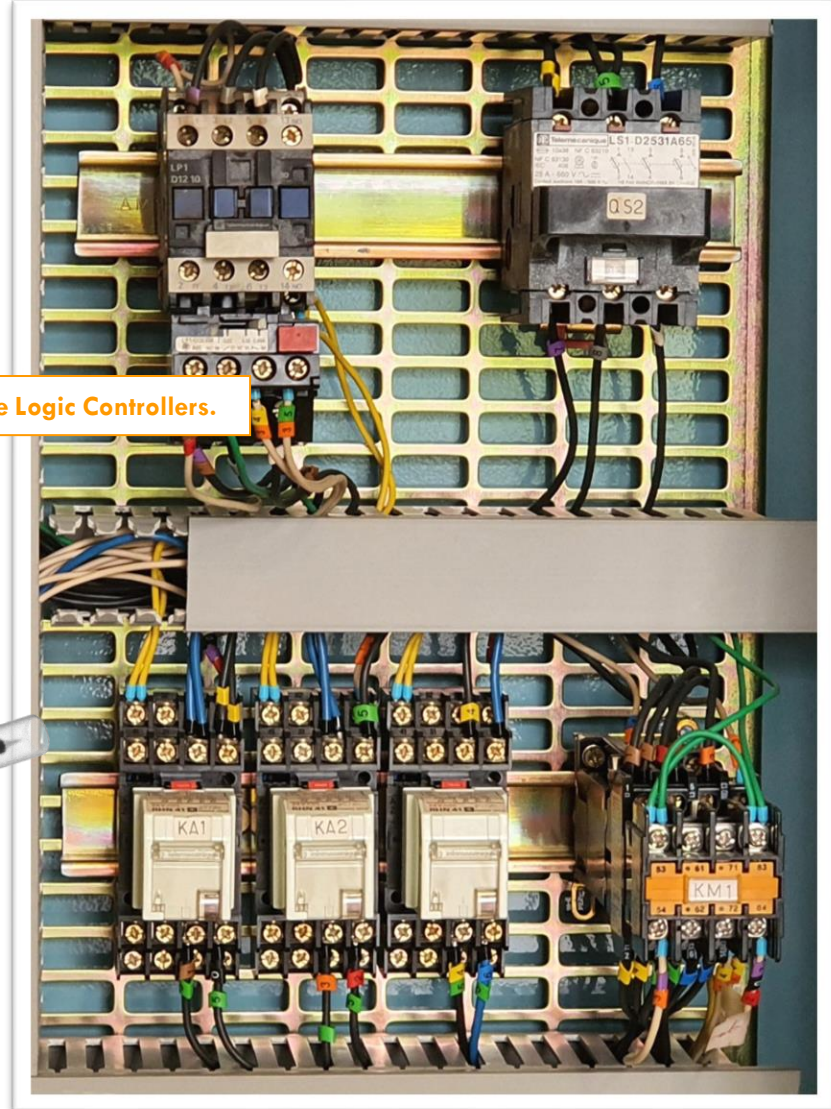


Safety shunts

Designation : safety shunts.



Programable Logic Controllers.



Safety shunts

Designation : safety shunts.



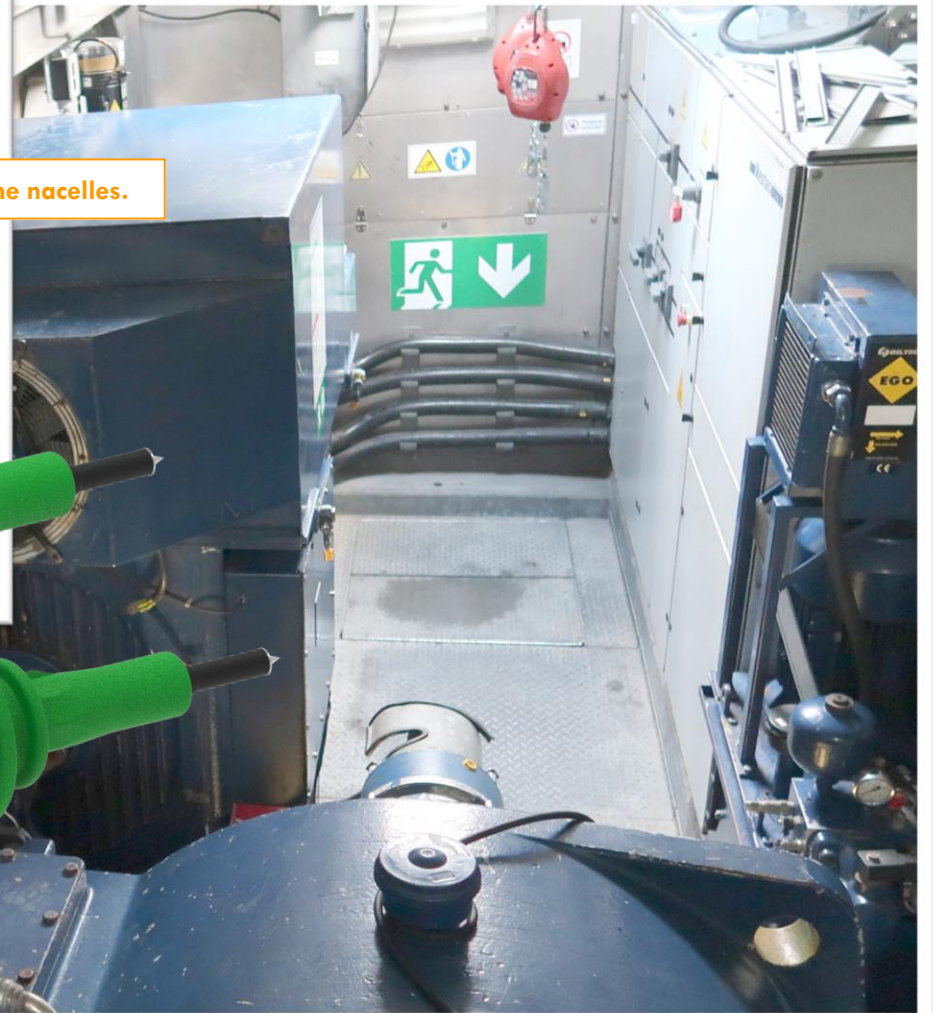
Electric vehicle charging stations.
Electric Vehicle Supply Equipment.

Safety shunts

Designation : safety shunts.



Wind turbine nacelles.



Safety shunts



Designation : safety shunts.

Please contact us at :

sales@electro-pjp.com

+33(0) 384 821 330

www.electro-pjp.com

ELECTRO-PJP
ZI Charmes d'Amont
13 rue de Madrid
39500 TAVAUUX
FRANCE

-
- | | |
|-------------------|--|
| Conformity | <ul style="list-style-type: none">• CE marking.• European Directive "Low Voltage Directive" 2014/35/UE.• International / European standard EN / IEC 61010-031.• European Directive "RoHS" 2011/65/EU. European Directive 2015/863/EU.• European regulation n°1907 / 2006 "REACH".• European regulation 2017 / 821 "Conflict minerals".• British statutory requirements 2016 No. 1101. The Electrical Equipment (Safety) Regulations. |
|-------------------|--|
-
- | | |
|--------------------|--|
| Environment | <ul style="list-style-type: none">• "RoHS" compliant, Pb ≤ 4 %, Hg ≤ 0.1 %, Cr VI ≤ 0.1 %, Cd ≤ 0.01 %, PBB ≤ 0.1 %, PBDE ≤ 0.1 %, DEHP ≤ 0.1 %, BBP ≤ 0.1 %, DBP ≤ 0.1 %, and DIBP ≤ 0.1 %.• "REACH" compliant, no substances from the candidate list of SVHC for authorization at mass concentrations greater than 0.1 %. |
|--------------------|--|
-