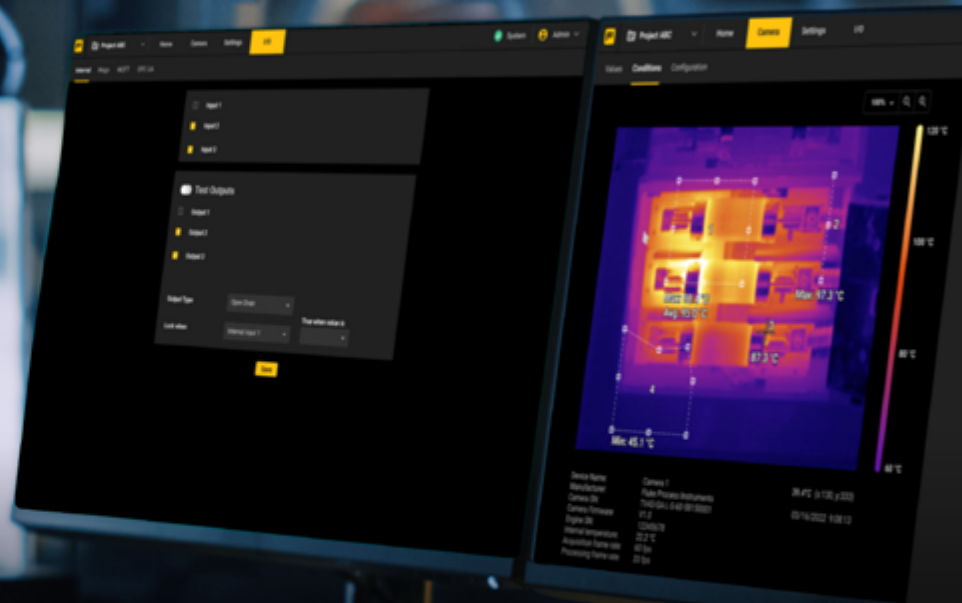


**FLUKE**®

**Process  
Instruments**

# ThermoView® TV30

Thermal imaging solutions for industrial applications



**TEMPERATURE  
MONITORING**



**REMOTE TEMPERATURE  
ALARMING**



**REAL-TIME  
INSPECTION**



**CRITICAL ASSET  
MONITORING**

# Advanced thermal imaging for demanding industrial applications and automation

The **Thermoview TV30 Thermal Imager** simplifies industrial process monitoring. Easily track temperatures in harsh conditions and spot issues swiftly with AOIs and customization. The TV30-series comes with two camera options. TV30-SA camera models integrate without a PC, allowing you to monitor your process and access onboard analytics of the fixed thermal imager through a web browser. The TV30-GE models open up a world of possibilities for more specialized applications with their true GigE Vision interface.



## Overview of Standalone and GigE Vision camera features

	Customizable Alerts	Supported protocols	Inputs/Outputs	Areas of Interest	User interface	Trending	Archiving
<b>TV30-SA</b>	Digital Output	OPC UA, MQTT, DHCP, mDNS (Bonjour)	3 inputs / 3 outputs (additional remote I/O with Wago)	32	Web Interface	None	None
<b>TV30-GE and ThermoView Software</b>	Digital Output, Email	EthernetIP, Modbus, IEC-61850	Unlimited remote I/O with Wago	Unlimited	PC Based software	AOIs	Images, AOIs

Contact sales for more information on which model would best suit your application.

## How can TV30 help you with your temperature monitoring?



### Avoid costly downtime

- The TV30 identifies defects and can alert you when any anomalies are detected.
- Continuous 24/7 monitoring



### Reduced installation cost and space savings

- The fixed thermal imager's small footprint allows for easier installation
- Multiple fieldbus options simplify integration with your existing process controllers and external devices.



### No additional software required

- TV30-SA: An accessible, standalone thermal imaging solution with onboard analytics and remote setup via web browser.
- TV30-GE with ThermoView Software for enhanced inspection capabilities: Ideal for complex tasks.



### Designed for the toughest conditions

- Rugged and reliable IP67 housing is resilient and built to last
- With an air purge, water-cooling jacket, and other accessories available, you can be sure your equipment will stand up to whatever is thrown at it.

## Powerful networking and I/O capabilities to control your process

### Standalone (SA) camera



#### Powerful and user friendly TV30-SA camera:

With a variety of supported protocols and I/O options, end users can easily install the TV30-SA camera making a direct connection to the factory control systems.



#### Agile observability:

When analog outputs or additional I/O is needed the TV30-SA camera directly connects to external I/O, allowing users to define multiple Areas of Interest (AOIs) with unique parameters and alerts, enhancing automated monitoring, observability, and security.



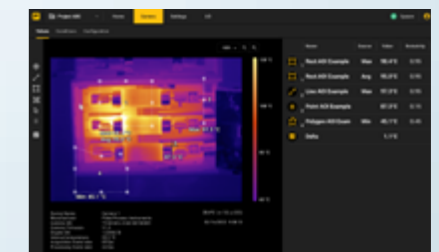
#### Seamless integration:

TV30-SA seamlessly integrates with plant-level automation systems through a variety of supported protocols, Power over Ethernet, and on board digital I/O modules. Its robust IP67-rated housing suits industrial environments, ensuring long-term reliability.



#### Automated alarming:

TV30-SA cameras are edge-based with customizable alerts for anomaly detection, eliminating the need for constant manual monitoring in harsh environments.



The TV30SA offers remote accessibility through a web browser, enabling users to create multiple AOIs (Areas of Interest) within a single camera unit.

## GigE camera and ThermoView Software



#### High-Performance TV30-GE Camera:

Fully compliant GigE cameras offer flexibility for integrators and OEMs, enabling software development without SDKs. TV30-GE cameras easily integrate with ThermoView software.



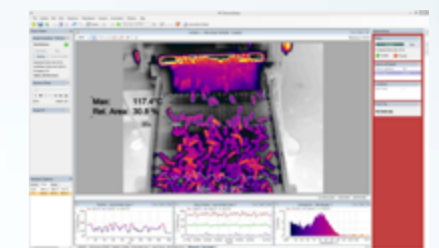
#### Control:

Combine TV30-GE thermal imagers and ThermoView software for continuous monitoring and alarms. Utilize DAQ modules for temperature event detection. Manual or automated image and AOI data archiving ensures process traceability.



#### Visualize:

Use your software or ThermoView. ThermoView and GigE Vision can stream thermal images at up to 60 frames per second. Analyze temperature data with various software tools, allowing in-depth analysis. Offline analysis tools such as data archiving and image playback offer excellent diagnostic capabilities.



ThermoView software for GigE models for factory automation, process inspection, and process monitoring applications

## Applications

Temperature monitoring finds diverse applications across industries. It plays a pivotal role in manufacturing and industrial processes by ensuring quality control, equipment health, and material handling through continuous temperature tracking.

- Temperature monitoring
- Critical asset monitoring
- Press hardening
- Brake testing
- Lime kiln shell
- Metal spin forming
- Waste incinerator
- Boiler monitoring
- Metals:
  - Cobble detection
  - Electric arc furnace shell monitoring
  - Slab crack detection
  - Tundish spout monitoring.



## Highlights

- Wide range of temperatures: -10 to 1300 °C (14 to 2372 °F), auto range scaling
- Image resolution: 320 x 240 (76,800 pixels) or 640 x 480 (307,200 pixels)
- Motorized remote focus
- Multiple lens options available
- LAN/Ethernet with PoE for communication with the thermal imager to provide access
- Operating temperature: -10 to 50 °C (14 to 122 °F)
- Storage temperature: -20 to 70 °C (-4 to 158 °F)
- Air purge and accessories available



*Water cooling enclosure with air purge collar*



*Outdoor enclosure*

### The Fluke Process Instruments Guarantee

The ThermoView TV30 thermal imager is supported by a 2 year warranty. With a network of trained representatives and agents in over one hundred countries and offices located in the U.S., Germany and China, we provide local service and support.

## Fluke Process Instruments

### Americas

Everett, WA USA  
 Tel: +1 800 227 8074 (USA and Canada, only)  
 +1 425 446 6300  
[solutions@flukeprocessinstruments.com](mailto:solutions@flukeprocessinstruments.com)

### EMEA

Berlin, Germany  
 Tel: +49 30 4 78 00 80  
[info@flukeprocessinstruments.de](mailto:info@flukeprocessinstruments.de)

### China

Beijing, China  
 Tel: +8610 6438 4691  
[info@flukeprocessinstruments.cn](mailto:info@flukeprocessinstruments.cn)

### Japan

Tokyo, Japan  
 Tel: +81 03 6714 3114  
[info@flukeprocessinstruments.jp](mailto:info@flukeprocessinstruments.jp)

### Asia East and South

India Tel: +91 22 62495028  
 Singapore Tel: +65 6799 5578  
[sales.asia@flukeprocessinstruments.com](mailto:sales.asia@flukeprocessinstruments.com)

### Worldwide Service

Fluke Process Instruments offers services, including repair and calibration. For more information, contact your local office.

[www.flukeprocessinstruments.com](http://www.flukeprocessinstruments.com)

© 2023 Fluke Process Instruments  
 Specifications subject to change without notice.  
 08/2023 6014037A-EN