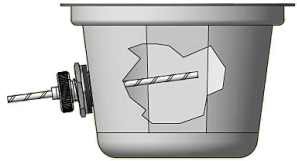
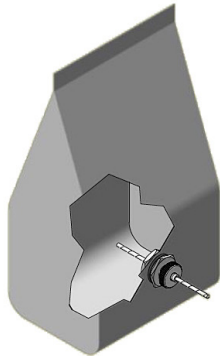


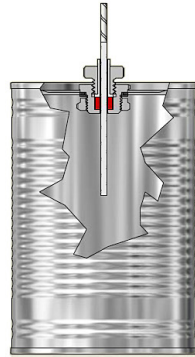
Application Examples



Plastic Container



Soft Pouch



Can / Jar

Specifications

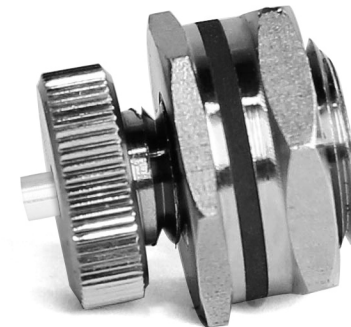
Specification	CF200
Data Logger Compatibility	HiTemp140-FP, HiTemp140-PT-5, HiTemp140-2-TD, HiTemp140-5.25-TD
Operating Environment	-40 °C to +140 °C (-40 °F to +284 °F) 0 %RH to 100 %RH, 0.002 PSIA to 100 PSIA
Dimensions	0.87 in x 0.87 in x 0.85 in (22.1 mm x 22.1 mm x 21.6 mm)
Required Container Hole Size	9/16 in dia.
Weight	28 g (0.99 oz)
Materials	Food Grade 316 Stainless Steel, Silicone Rubber

*Specifications subject to change.
See MadgeTech's terms and conditions at www.madgetech.com*

MadgeTech, Inc.
6 Warner Road • Warner, NH 03278
Phone 603.456.2011 • Fax 603.456.2012
www.madgetech.com • info@madgetech.com

DOC-1326035-00
REV 1 2016.08.25

CF200



CF200
Canning Fitting

Product Notes

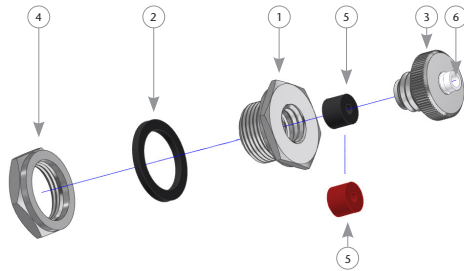
The CF200 Canning Fitting securely attaches MadgeTech HiTemp140 data loggers to jar lids, cans, pouches or other containers, with the data logger probe inserted into the container to monitor internal temperatures.

The CF200 can withstand temperatures up to 140 °C (284 °F) making it ideal for use in a variety of canning applications in a wide range of industries and environments.



CF200 Components

1. Receptacle
2. Sealing Washer
3. Thumb Screw
4. Panel Nut
5. Sealing Ferrule
 - Black for 0.080-0.100 inch dia.
 - Red for 0.100-0.125 inch dia.
6. White Washer



Installation Guide Shown with the HiTemp140-2-TD

Material Requirements:

- CF200 Canning Fitting
- Compatible MadgeTech Data Logger (sold separately)
- Hole Punch Tool (sold separately)

Setup Requirements:

Using a hole punch tool (sold separately), create a hole in the container so the CF200 and probe can be inserted. A 9/16 inch diameter hole is required to use the CF200.



1. Ensure the sealing ferrule is seated inside the receptacle. Use the black rubber ferrule for 0.080 - 0.100 inch diameter probes or the red rubber ferrule for 0.100 - 0.125 inch diameter probes.



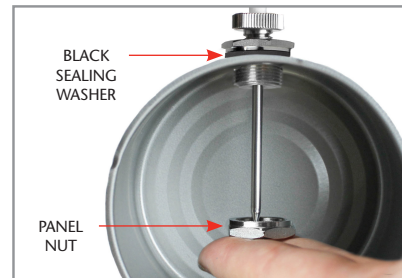
2. Thread the data logger probe through the thumb screw as shown.



3. Insert data logger probe tip through the receptacle.



4. Hand twist the thumb screw into the probe receptacle until tight. Some threads will still be visible.



5. Place the black sealing washer over the probe tip and insert through the 9/16 inch diameter hole of the container from the outside. Place the panel nut over the end of the probe tip as shown from the inside of the container and thread the two pieces together.



6. The CF200 is now ready to use.