

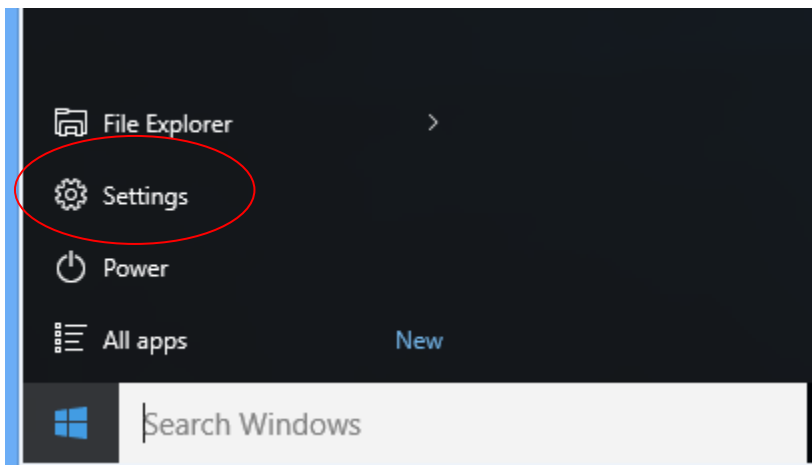
Win 10 Configuration *For SiteView Installation*

Please skip this document if your operating system is NOT Windows 10!

For Windows 10 user, in order to install USB Driver properly, the following steps must be followed before the installation of SiteView software:

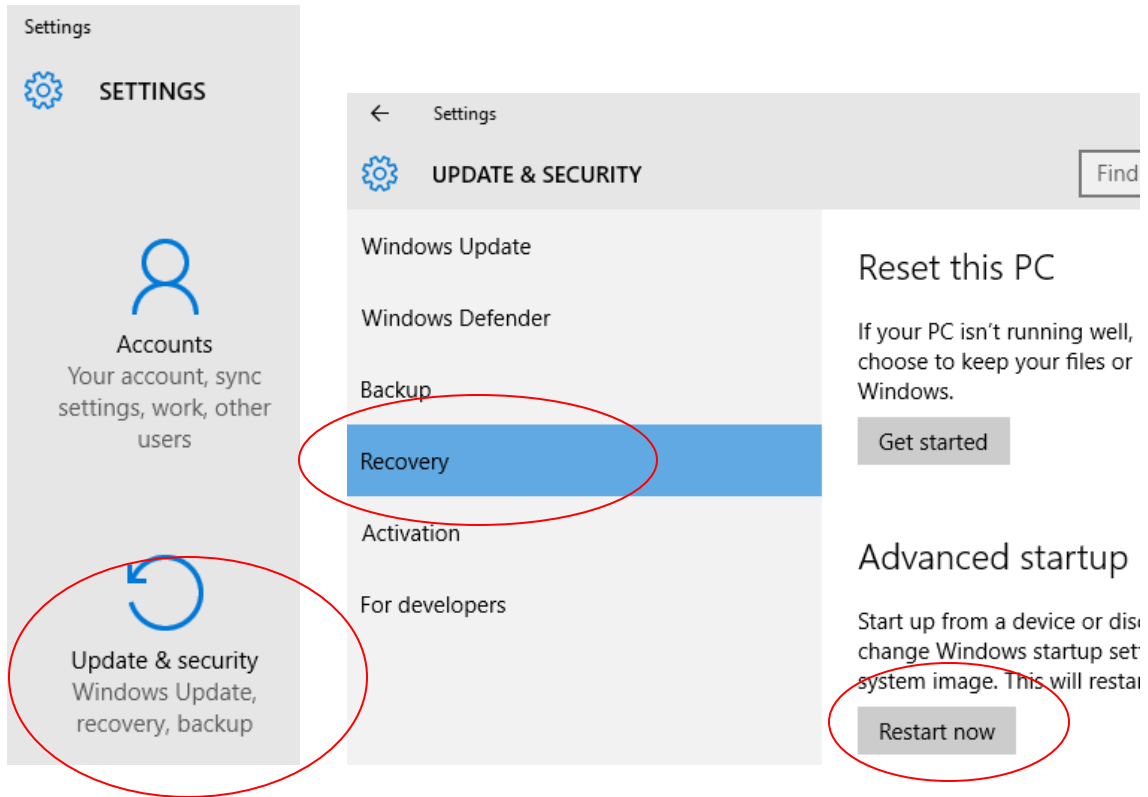
1. Restart PC for Advanced Options

- A. Click Start button (the lower-right corner of the screen) and select **Settings**.



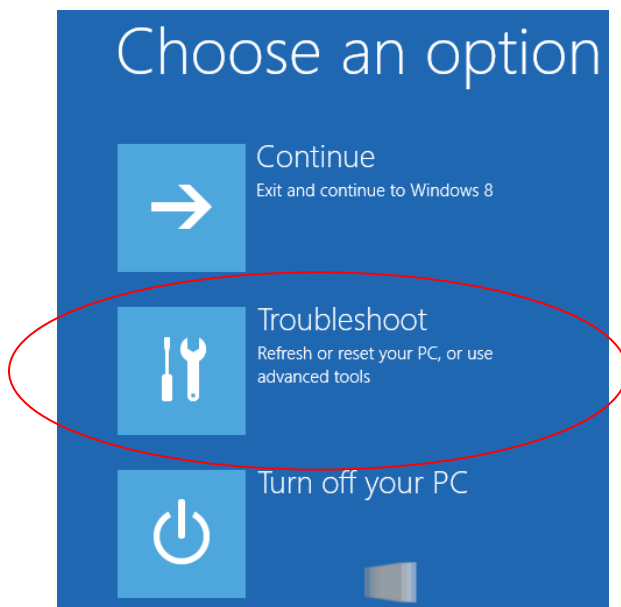
- B. Select **Update and Security**, then select **Recovery**. Under **Advanced Startup** choose: **Restart Now**.

See next page for screenshots ->

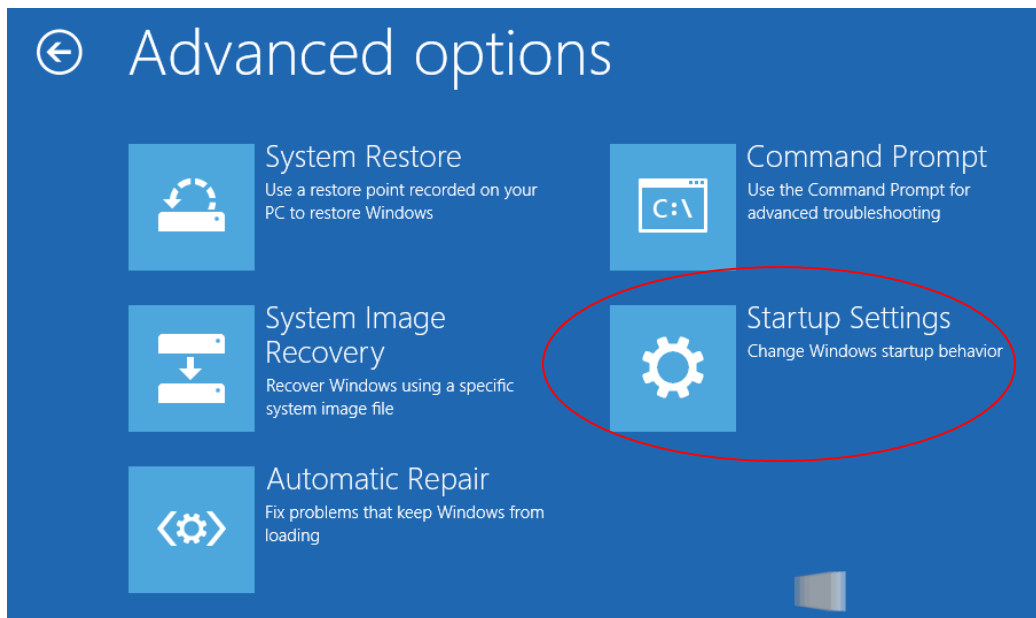


2. Change Advanced Options

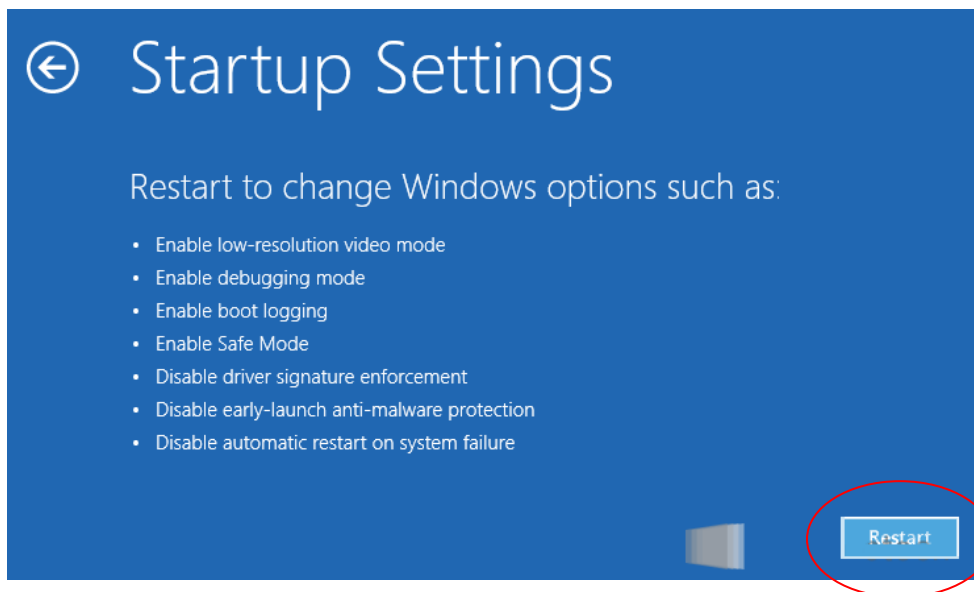
C. Now Windows 10 will restart in the advanced menu options, click on Troubleshoot.



D. Click the **Startup Settings** option from the menu.



E. The Startup Settings will allow you to change various Windows configuration options. Click **Restart**.



F. Now Windows 10 will reboot. But instead of going to the Desktop it will start in the Startup Settings page. Choose option: **7) Disable driver signature enforcement** by pressing F7 or the number 7. Then the windows will boot to the mode allowing the USB Driver to be installed properly.

Startup Settings

Press a number to choose from the options below:

Use number keys or functions keys F1-F9.

- 1) Enable debugging
- 2) Enable boot logging
- 3) Enable low-resolution video
- 4) Enable Safe Mode
- 5) Enable Safe Mode with Networking
- 6) Enable Safe Mode with Command Prompt
- 7) Disable driver signature enforcement
- 8) Disable early launch anti-malware protection
- 9) Disable automatic restart after failure

Press F10 for more options

Press Enter to return to your operating system

Windows 10 is now ready for SiteView installation.