

# LHC 650

The Leyro Portable dry well temperature calibrator suitable for temperature calibrations, between 40°C ... 650°C, offers a versatile solution for calibrating thermocouples and RTD's in industrial environments, offering an excellent performance in stability and uniformity, as well as a fast response time. The LHC 650 is easy to use, thanks to its compact and light weight design. Thanks to the large size of the insert, it has a large multi hole capacity and can calibrate a large number of thermocouples at the same time. The diameter of the Dry Block is Ø 27 mm and 165 mm of depth



## APPLICATIONS

On-site calibration  
Maintenance and Service  
All kind of Industry  
Machinery Construction

## HIGHLIGHTS

Fast , Compact and Light  
High Calibration Capacity  
Insert Ø 27mm length 165mm  
Different types of inserts exchangeable  
Temperature Range: 40°C...650°C  
Stability:  $\pm 0,1^{\circ}\text{C}$   
Warranty: 3 Years



### General Information

Easy and intuitive temperature controller with 4 digits and a resolution of 0,1  
Integrated TC probe for reference temperature measurements  
Accuracy:  $\pm 0,2^{\circ}\text{C}$   
Temperature Stability:  $\pm 0,1^{\circ}\text{C}$   
Uniformity :  $\pm 0,1^{\circ}\text{C}$



## Technical Data

|                                 |   |
|---------------------------------|---|
| Operating Temperature Range(°C) | 40 ...650°C   |
| Accuracy                        | ± 0,2 °C  |
| Stability:                      | ± 0,1 °C  |
| Resolution                      | ± 0.1°C   |
| Uniformity                      | ± 0,1°C   |
| Temperature Control             | Internal TC   |
| Calibration Volume              | Ø 27mm x 165 mm (insert exchangeable)   |
| Heating Time                    | From 50 to 600 °C: 20 Minutes   |
| Cooling Time                    | From 600 to 100 °C 35 Minutes   |
| Housing and assembly            | Portable  |
| Dimensions (mm)                 | 190 x 270 x 428 mm  |
| Weight (kg)                     | 9 kg approx.  |
| Supply                          | 100 ... 234 Vac 50/60 Hz  |
| Power Consumption               | Max 800 W   |
| Standar insert                  | B: 1 x Ø 3,2 / 1 x Ø 5 / 1 x Ø 6,5 / 1 x Ø 10,5   |
| Opcional Inserts                | C: 1 x Ø 6,5 / 1x Ø 12,5<br>D: 1 x Ø 4,5 / 1 x Ø 6,5 / 1 x Ø 10,5<br>E: 1 x Ø 15,7<br>F: 1 x Ø 17,5<br>G: 1 x Ø 3,2 / 1 x Ø 5 / 1 x Ø 7 / 1 x Ø 10,5<br>A: Blank (without holes). |

## Scope of delivery

Basic Instrument LHC 650

Power Cord

Standar Insert: B: 1 x Ø 3,2 / 1 x Ø 5 / 1 x Ø 6,5 / 1 x Ø 10,5

Manufacturing Traceable Calibration Certificate 5 Points

Instruction Manual

3 Years Warranty against factory defects

## Optional

Communication RS 485

Trolley transport case with wheels and handle.

ISO 17025 Calibration Certificate (ENAC).

Optional Inserts: C: 1 x Ø 6,5 / 1x Ø 12,5

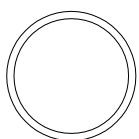
D: 1 x Ø 4,5 / 1 x Ø 6,5 / 1 x Ø 10,5

E: 1 x Ø 15,7

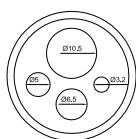
F: 1 x Ø 17,5

G: 1 x Ø 3,2 / 1 x Ø 5 / 1 x Ø 7 / 1 x Ø 10,5

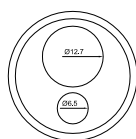
A: Blank (without holes).



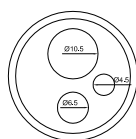
A



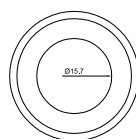
B



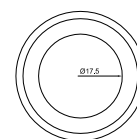
C



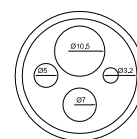
D



E



F



G