

MARATHON PRODUCTS, INC.

2c\temp, 3c\temp & edl-CO2
Data Logger Initialization Instructions:



Initializing the Logger

Start the **MDAS-Pro software** by double clicking on the icon.

On the menu select **edl** and click on **Logger Initialization** in the drop down menu.



The Logger Initialization screen will appear.

SETUP TAB:

- **Description:** Enter alpha-numeric information, such as the location of the unit.
- **Tracking Number:** Enter numeric information, such as a record number for shipping or receiving.
- **Logger Clock:** Set the time manually in the window, or set the logger time based on the time on your PC.
- **Battery Status:** This displays the date when the battery was installed or replaced.

Logger Initialization

Setup | Measurement | Alarms | Properties

Description of Recording

Tracking Number: 61106052

Logger Clock

1/22/2010 4:07:56 pm Pacific Standard Time

Set Logger Clock To Computer Time

Computer time differs from logger time by 59Min 6Sec

Battery Status

Battery was installed on 9/25/2008

87%

Erase Recording Cancel <= Back Next =>

MEASUREMENT TAB:

- **Start Delay:** Set a time delay in either hours, minutes, or seconds before the edL-CO₂ will begin to record.
- **Measurement Times:** Set the length of time in days or hours that you wish to record data. Please note that the Duration of Recording and Interval Between Measurements are dynamically linked.

Logger Initialization

Setup | Measurement | Alarms | Properties

Start Delay

Pushbutton Start Delay:

0 Hours 0 Min. 0 Sec. ↑ ↓

Measurement Times

Duration of Recording:

2 Days 14 Hours 57 Min.

Interval Between Measurements:

0 Hours 1 Min. 0 Sec. ↑ ↓

Total Number of Measurements: 3976

Delay to First Measurement: 1Min

Recording Completion Date (est., Start Now) = 1/25/2010 7:08:05 AM

Erase Recording Cancel <= Back Next =>

Logger Initialization

Setup | Measurement | Alarms | Properties

Start Delay

Pushbutton Start Delay:

0 Hours 0 Min. 0 Sec. ↑ ↓

Measurement Times

Duration of Recording:

0 Days 2 Hours 5 Min.

Interval Between Measurements:

0 Hours 0 Min. 2 Sec. ↑ ↓

Total Number of Measurements: 3976

Delay to First Measurement: 1Min

Recording Completion Date (est., Start Now) = 1/22/2010 5:22:41 PM

Erase Recording Cancel <= Back Next =>

Setting the Duration of Recording will automatically calculate the Interval Between Measurements. Conversely, setting the Interval Between Measurements, will automatically calculate the Duration of Recording. For example, if you set the Duration of Recording to 3 Days, it will automatically calculate the Interval Between Measurements as 34 seconds. Or, if you set the Interval Between Measurements at 15 minutes, it will automatically calculate the Duration of Recording to 79 days and 21 hours.

Logger Initialization

Setup | Measurement | Alarms | Properties

Start Delay

Pushbutton Start Delay:

0 Hours 0 Min. 0 Sec. ↑ ↓

Measurement Times

Duration of Recording:

13 Days 4 Hours 51 Min.

Interval Between Measurements:

0 Hours 5 Min. 0 Sec. ↑ ↓

Total Number of Measurements: 3976

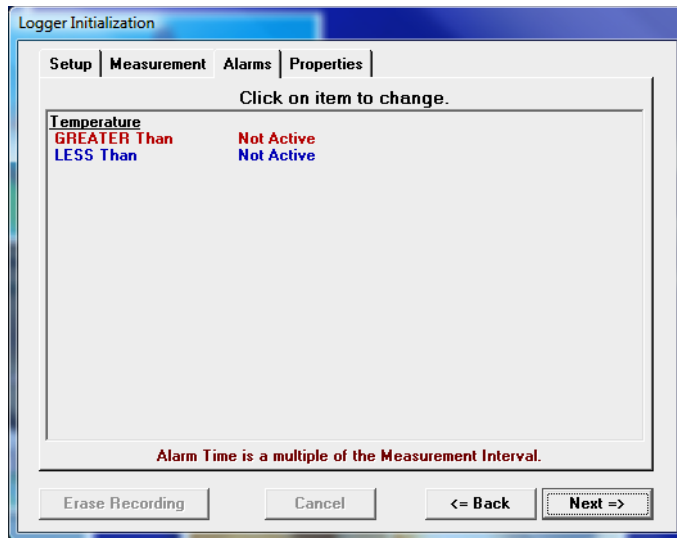
Delay to First Measurement: 1Min

Recording Completion Date (est., Start Now) = 2/4/2010 8:09:12 PM

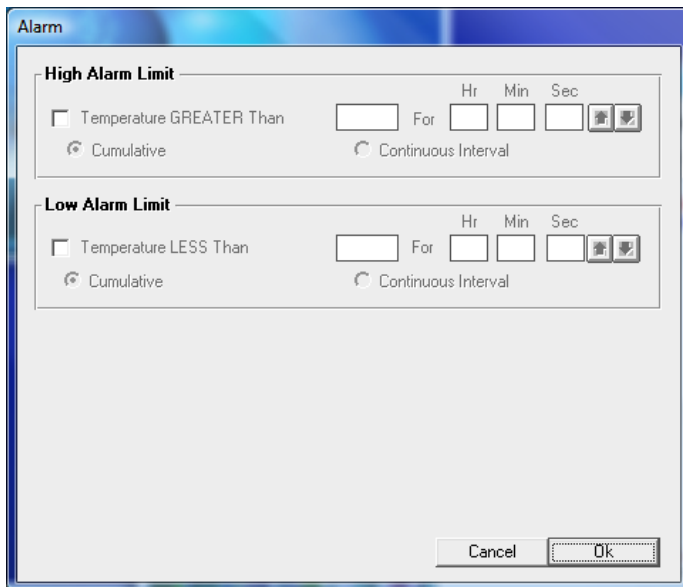
Erase Recording Cancel <= Back Next =>

ALARMS TAB:

- **Temperature GREATER Than:** Set the maximum temperature for an alarm condition to be triggered.
- **Temperature LESS Than:** Set the minimum temperature for an alarm condition to be triggered.
- **Continuous:** Time over or under the alarm continuously.
- **Cumulative:** Total cumulative time over or under the alarm (this feature is available only with the silver micro-DL)

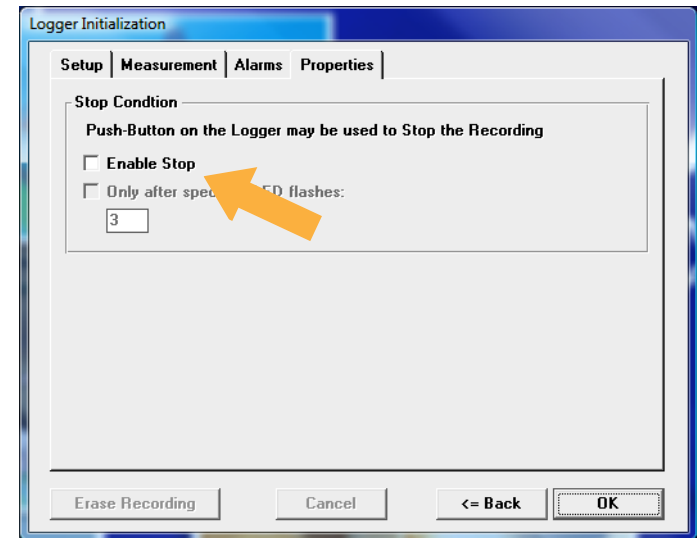


Check the **High Alarm Limit** or **Low Alarm Limit** if you want to enable the flashing LED alarm indicator.



PROPERTIES TAB:

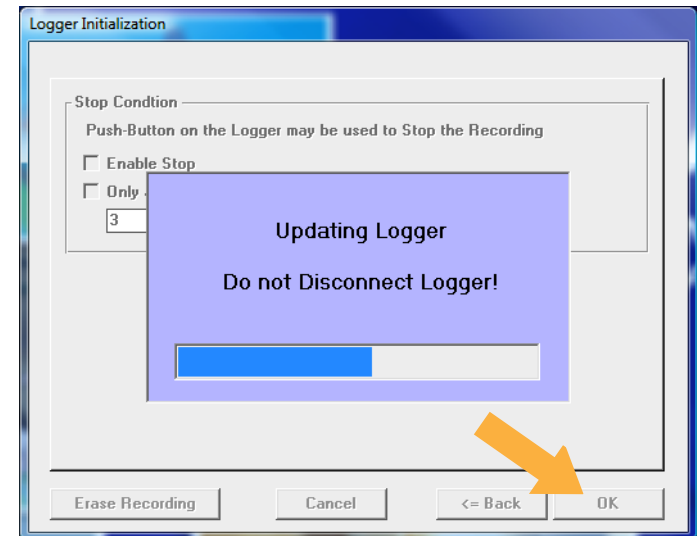
- **Stop Condition:** The Push Start button on the logger may be enabled as a Stop button mechanism. Check the **Enable Stop** box if you want to be able to stop recording. Note that the device cannot be restarted after pushing the Stop button.



- **Memory Configuration:** The memory may be configured two ways. The default is **Record to End of Memory** (recommended). The other is **Continuous** which writes over the oldest data.

Push **OK** to update the firmware in the logger.

Wait until the updating is finished before disconnecting the logger.



YOU ARE NOW READY TO BEGIN RECORDING!

Simply detach the unit from the IC-9P cable and press the black Start button (the middle black depression) with a pen or other pointed instrument.

To confirm that the logger has been started, the Green LED will blink three times in slow succession. The 2\ctemp, 3\ctemp or CO2 can now be placed where you want to record the temperature.