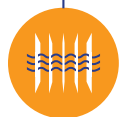


MARATHON PRODUCTS, INC.



edl ■ XYZ

Temperature/Humidity/Vibration Logger

Install the MaxiThermal Software

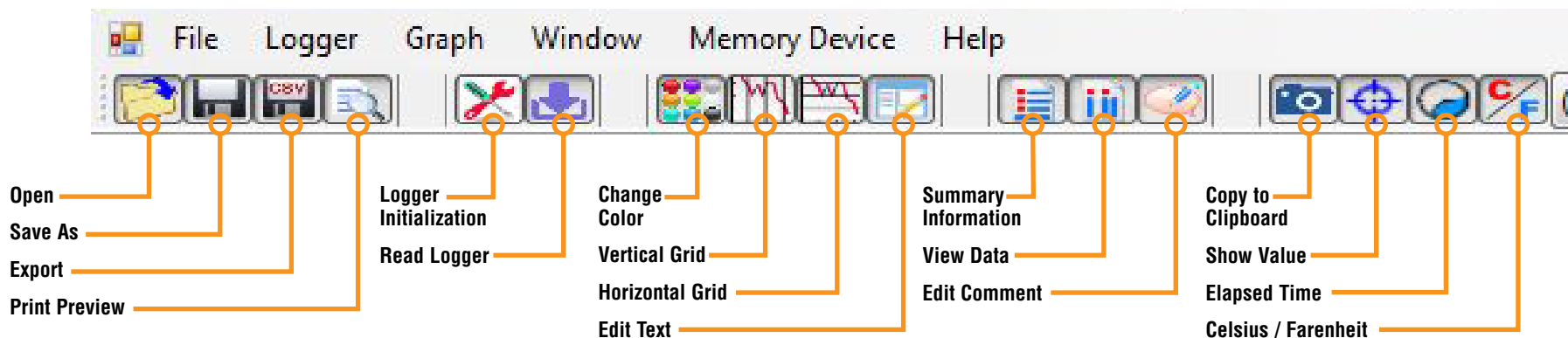
You need to **“Run As Administrator”** when you install the MaxiThermal Software. There are 2 programs on the software CD that need to be installed:

MaxiThermal Software and GPSThroughUSBService

Make sure that you have installed both programs before running MaxiThermal.



Understanding the Menu Bar

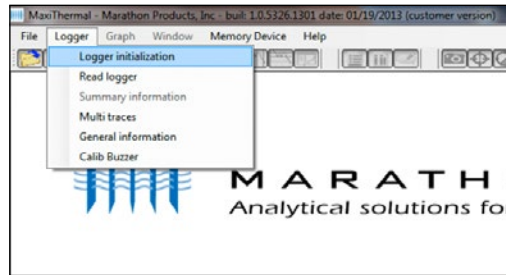


Q U I C K S T A R T Q U I D E

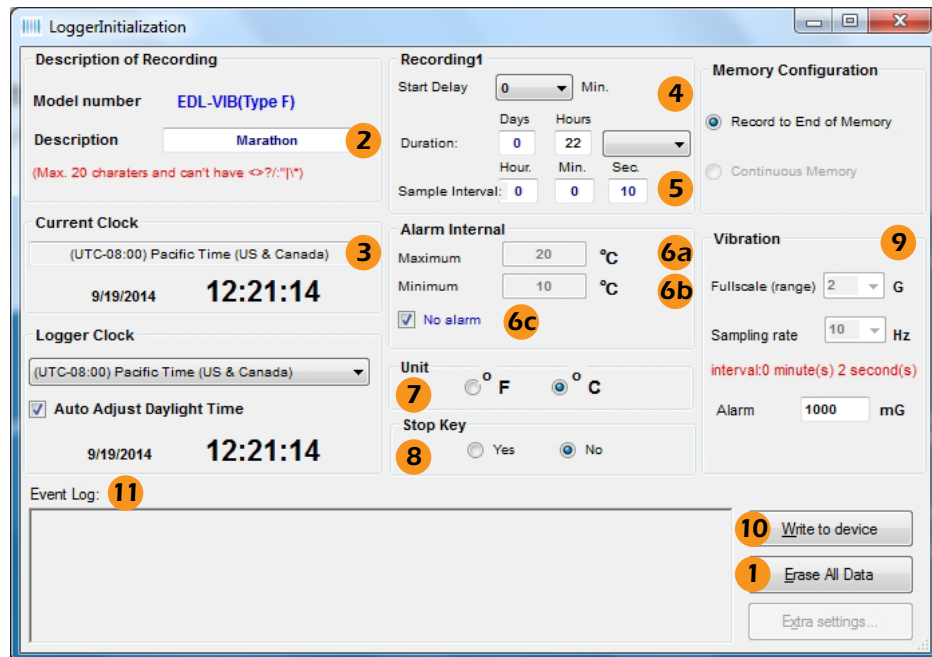
Programming The Logger

Begin by starting the MaxiThermal software, connect the USB cable, then connect the Marathon data logger.

On the menu bar select **Logger / Logger Initialization** in the drop-down menu. The Logger Initialization Window will open.

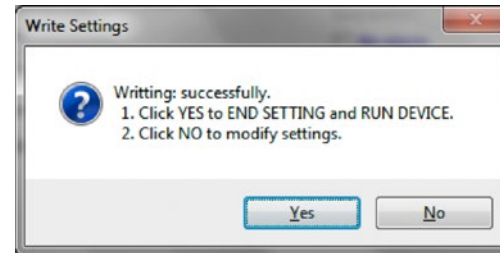


1. If there is data in the logger, Click the **Erase all Data** button. The **Event Log 11** will update that the data has been erased.
 2. For **Description**, enter a Descriptive name for the recording.
 3. For **Current Clock**, select the Time Zone for the logger clock.
 - **Current Clock** contains current timezone and current time of the PC.
 - **Logger Clock** is the place to set timezone and setting time in Logger.
- Note: Logger Clock** will use **Current Clock** to calculate the offset when User chooses timezone. If the computer is running with the wrong date/time, the **Logger Clock** will end up with wrong time too.
4. Select a **Start Delay** time if you want to pause before starting to record.
 5. Select the **Duration** of recording time. The Sampling Interval will be automatically calculated.



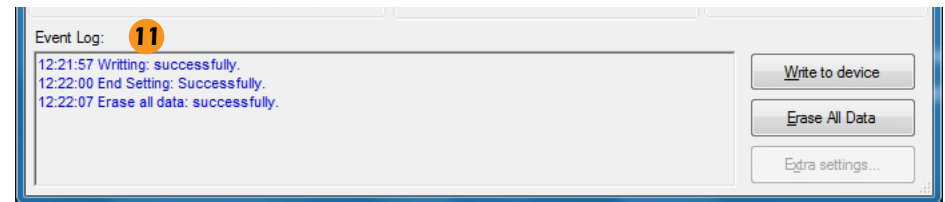
6. **Alarm:**
 - a. If you want a High Alarm, enter the temperature for the **Maximum**.
 - b. If you want a Low Alarm, enter the temperature for the **Minimum**.
 - c. Or select **No Alarm**, if no alarm is desired.
7. For **Unit**, select temperature scale, °F = Fahrenheit or °C = Celsius.
8. Under **Stop Key**, select **Yes** if you want the logger to stop by pressing the Start button during recording.
9. The **Vibration** section shows the **Fullscale Range** and **Sampling rate** for the vibration sensors.
10. Click **Write to Device** to write the new configuration to the logger.

Click **Yes** to confirm you want to write the new configuration to the logger.

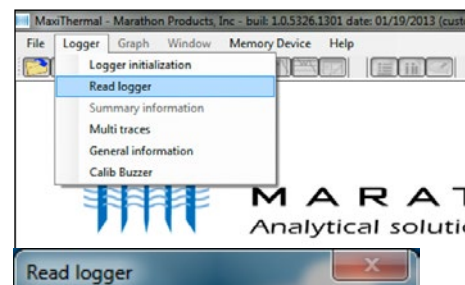


The **Event Log 11** will update with Write successful and End Settings successful.

The logger is ready to run. To start recording, press and hold the **START** button on the unit until the green light flashes.



Reading The Logger



Begin by starting the MaxiThermal software, connect the USB cable, then connect the Marathon data logger.

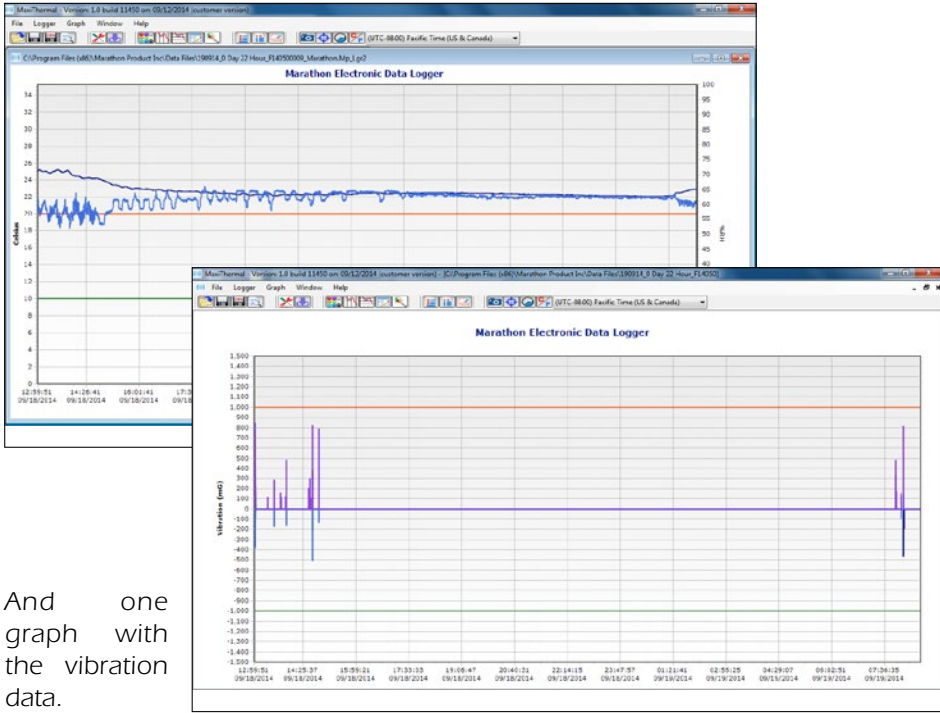
- On the menu bar select **Logger / Read Logger** in the drop-down menu.



If the logger is recording you will be notified and asked if you want to continue, click **Yes**.

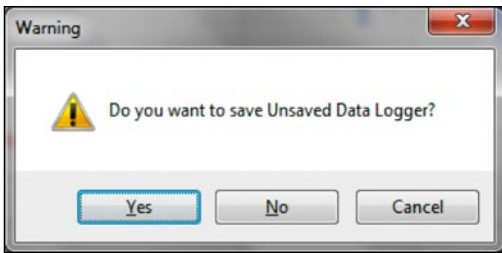
MaxiThermal software will read and plot the logger's data.

MaxiThermal software will read the logger and plot the data in two graphs. One graph with temperature and humidity.



And one graph with the vibration data.

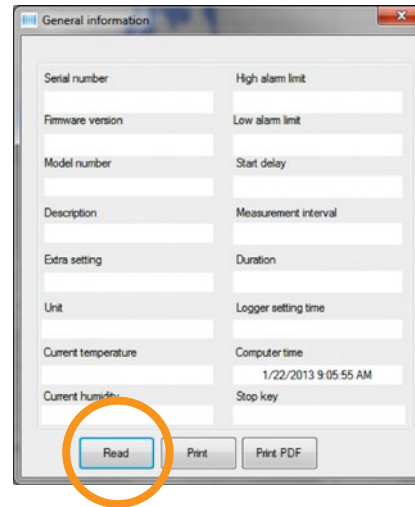
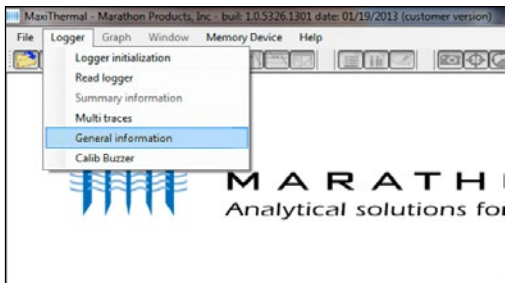
When you close the plot a warning window will open which asks if you want to save the data. Click **Yes**, **No** or **Cancel**.



Creating Reports

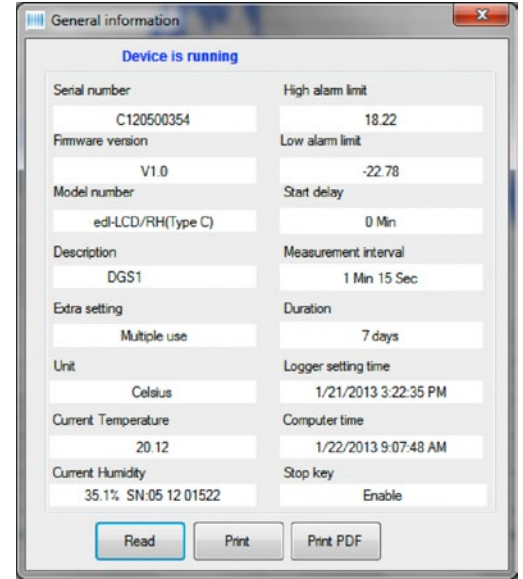
GENERAL INFORMATION

On the menu bar select **Logger / General Information** in the drop-down menu.



The General Information window will open. Click **Read**.

The software will read the logger's information and fill in the fields.



SUMMARY INFORMATION

On the menu bar select **Logger / Summary Information** in the drop-down menu.

The Summary Information window will open where you can scroll through the logger information.

