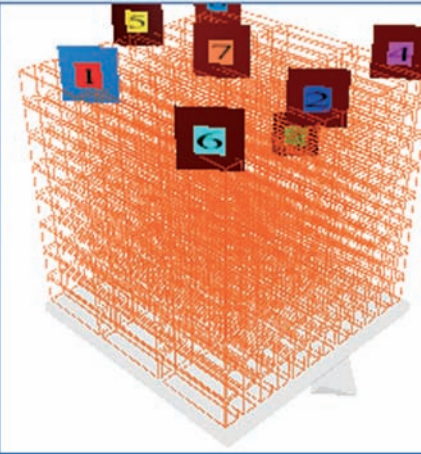
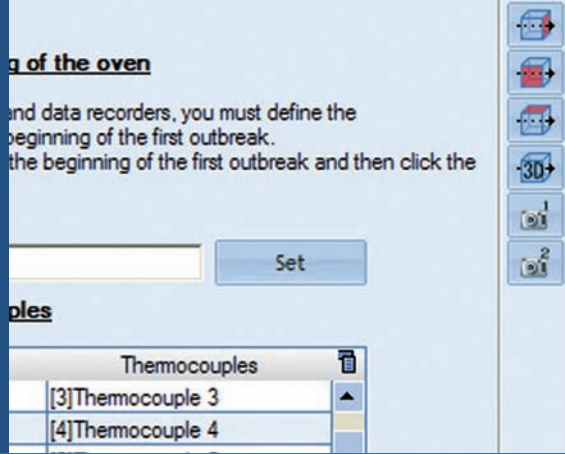


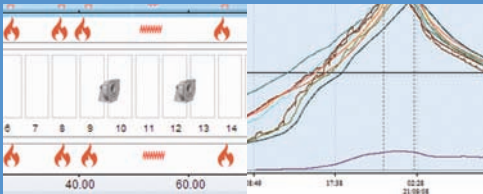
Data management software

QLEVER Ceramics



QLEVER Software for ceramics industry

Basic functionalities

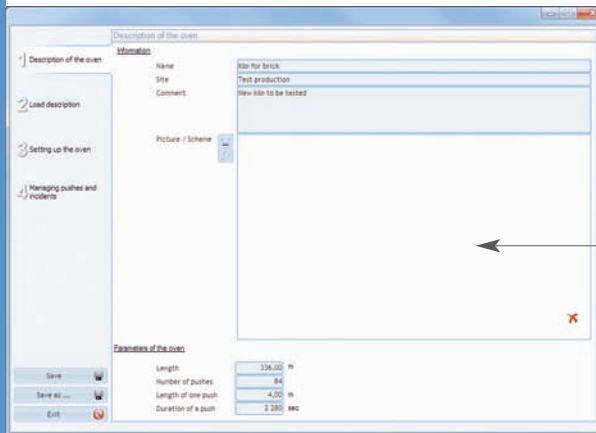


QLEVER Ceramics is the new software developed by TMI ORION to fulfill the needs of the ceramic industry. It takes into account the specificities of the kiln, carts and potentially dryers.

- Programs and reads the logger
- Analyzes the data
- Exports the data to an .txt file
- Minimum, Average and Maximum values of every channel
- Quartz inversion slopes
- Time at temperature
- Slopes calculation at any point
- Rise and fall values
- Real time data using the RF loggers

KEY FEATURES

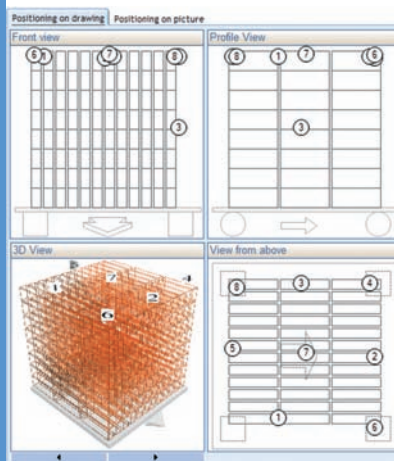
Kiln and Pushing process description



- Description of oven and wagon: length of the oven, number of pushes, duration and length

Insert a picture or a scheme of your oven

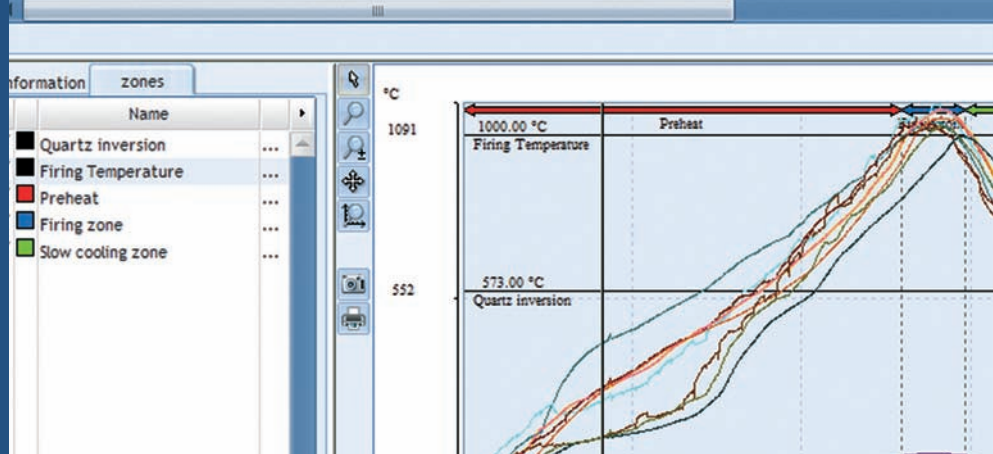
Load description and thermocouples positioning in 3D



- Load description: type and number of products, thermo couples positioning either on different views (3D view available) or on a picture.

QLEVER Ceramics

Kiln setting



- Position of different elements such as fans, burners...inside the kiln, and relative scheme with distances

Element	Description	Distance	Position
burner	Input	0,00	Right
electrical resistance	Fan	6,27	Left
probe	Fan	6,45	Right
Output	burner	15,68	Left
Fan	burner	15,85	Right

Incident and variable push rate

- Manages pushes and incidents with a variable push rate, so the software takes into account any change in the push rate due to an equipment failure or an incident while recording the data. You can mention the cause if you know it in the comment part.

N°	Duration	Explanation	Comment
1	9 500	Process	
2	9 500	Process	
3	9 500	Process	
4	9 500	Process	
5	11 000	Incident	A pack of bricks fell into the oven
6	9 500	Process	
7	9 500	Process	
8	9 500	Process	

Changing the selection.

Duration: 0 s

N°: 1 to 1

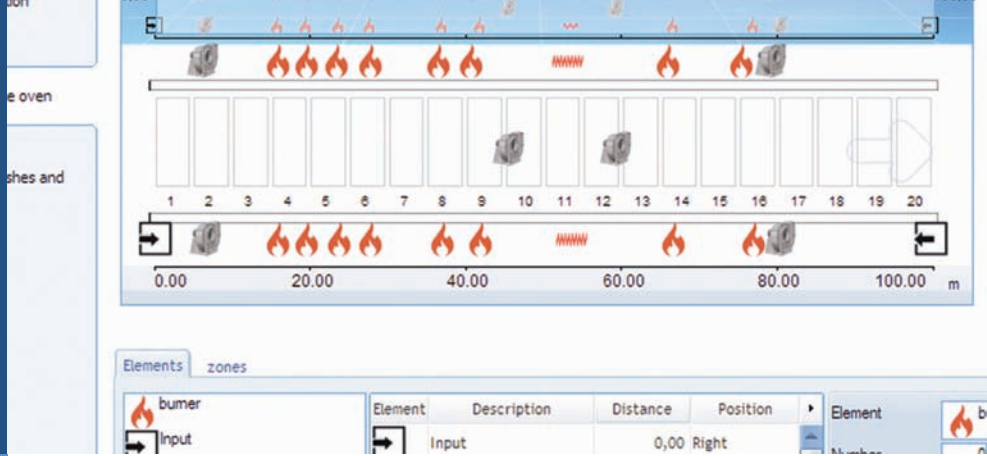
Explanation: Process

Comment:

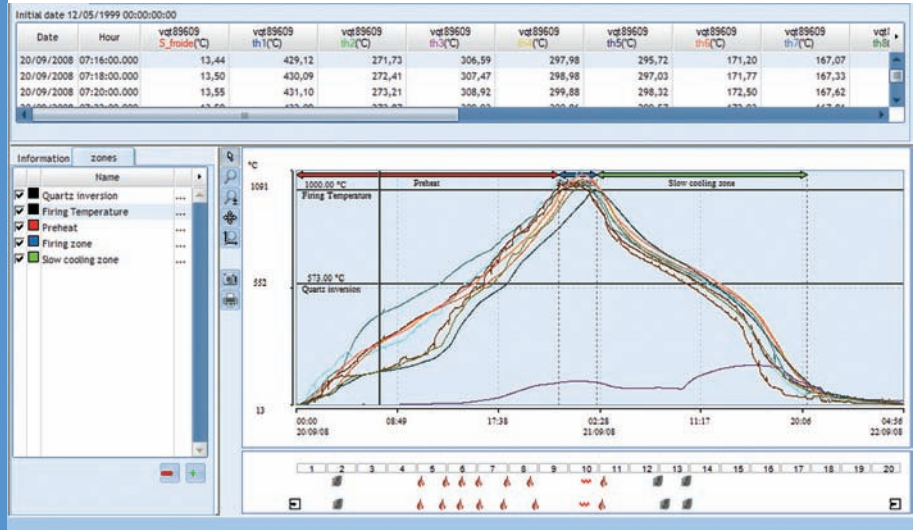
Modify

QLEVER Ceramics

Graph analysis and temperature mapping



The results given by the logger are linked to the kiln settings. The kiln scheme is set up below the kiln profile graph, so the user can know at the same time the temperature of the product and its relative position in the kiln.



- Maximum and minimum temperature per channel and the time they were reached
- Graphic features such as zoom, zones, automatic scales...
- Snapshots to paste the curve onto a report

Temperature mapping

QLEVER Ceramics displays the heating and cooling at each thermocouple located on the load through all the process in the kiln. A color scale going from blue (cool) to black (extremely hot) shows the temperature rises and falls.

