

RUSKA 7615

Hydraulic Pressure Controller/Calibrator

Users Manual

LIMITED WARRANTY AND LIMITATION OF LIABILITY

Each Fluke product is warranted to be free from defects in material and workmanship under normal use and service. The warranty period is one year and begins on the date of shipment. Parts, product repairs, and services are warranted for 90 days. This warranty extends only to the original buyer or end-user customer of a Fluke authorized reseller, and does not apply to fuses, disposable batteries, or to any product which, in Fluke's opinion, has been misused, altered, neglected, contaminated, or damaged by accident or abnormal conditions of operation or handling. Fluke warrants that software will operate substantially in accordance with its functional specifications for 90 days and that it has been properly recorded on non-defective media. Fluke does not warrant that software will be error free or operate without interruption.

Fluke authorized resellers shall extend this warranty on new and unused products to end-user customers only but have no authority to extend a greater or different warranty on behalf of Fluke. Warranty support is available only if product is purchased through a Fluke authorized sales outlet or Buyer has paid the applicable international price. Fluke reserves the right to invoice Buyer for importation costs of repair/replacement parts when product purchased in one country is submitted for repair in another country.

Fluke's warranty obligation is limited, at Fluke's option, to refund of the purchase price, free of charge repair, or replacement of a defective product which is returned to a Fluke authorized service center within the warranty period.

To obtain warranty service, contact your nearest Fluke authorized service center to obtain return authorization information, then send the product to that service center, with a description of the difficulty, postage and insurance prepaid (FOB Destination). Fluke assumes no risk for damage in transit. Following warranty repair, the product will be returned to Buyer, transportation prepaid (FOB Destination). If Fluke determines that failure was caused by neglect, misuse, contamination, alteration, accident, or abnormal condition of operation or handling, including overvoltage failures caused by use outside the product's specified rating, or normal wear and tear of mechanical components, Fluke will provide an estimate of repair costs and obtain authorization before commencing the work. Following repair, the product will be returned to the Buyer transportation prepaid and the Buyer will be billed for the repair and return transportation charges (FOB Shipping Point).

THIS WARRANTY IS BUYER'S SOLE AND EXCLUSIVE REMEDY AND IS IN LIEU OF ALL OTHER WARRANTIES, EXPRESS OR IMPLIED, INCLUDING BUT NOT LIMITED TO ANY IMPLIED WARRANTY OF MERCHANTABILITY OR FITNESS FOR A PARTICULAR PURPOSE. FLUKE SHALL NOT BE LIABLE FOR ANY SPECIAL, INDIRECT, INCIDENTAL, OR CONSEQUENTIAL DAMAGES OR LOSSES, INCLUDING LOSS OF DATA, ARISING FROM ANY CAUSE OR THEORY.

Since some countries or states do not allow limitation of the term of an implied warranty, or exclusion or limitation of incidental or consequential damages, the limitations and exclusions of this warranty may not apply to every buyer. If any provision of this Warranty is held invalid or unenforceable by a court or other decision-maker of competent jurisdiction, such holding will not affect the validity or enforceability of any other provision.

Fluke Corporation
P.O. Box 9090
Everett, WA 98206-9090
U.S.A.

Fluke Europe B.V.
P.O. Box 1186
5602 BD Eindhoven
The Netherlands

11/99

To register your product online, visit register.fluke.com

Table of Contents

Chapter	Title	Page
1	General Information	1-1
	Introduction.....	1-1
	General Information.....	1-1
	How to Contact Fluke.....	1-1
	Safety Information	1-2
	Safety Summary	1-2
	Keep Away From Live Circuits.....	1-2
	Do Not Service or Adjust Alone.....	1-2
	Resuscitation.....	1-2
	Electrostatic Discharge Sensitive Parts	1-2
	Compressed Air	1-2
	Personal Protective Equipment.....	1-2
	Inert Gases.....	1-2
	Symbols Used in this Manual	1-3
	Features.....	1-3
	NIST Traceability.....	1-3
	Power Supply.....	1-3
	Measurement While Control	1-3
	Friendly Display	1-4
	Adjustable Pressure Display.....	1-4
	Ease of Operation	1-4
	Easily Programmable.....	1-4
	Attractive Desktop Packaging	1-4
	Power-On Self Test (POST).....	1-4
	Ease of Calibration	1-4
	Automatic Zero Adjust.....	1-4
	Automatic Head Correction.....	1-4
	Choice of Medium.....	1-4
	Choice of display units	1-4
	Communications Interface.....	1-4
	Standard Equipment & Options	1-5
2	Theory of Operation	2-1
	Introduction.....	2-1

The Power Supply.....	2-1
The Electronics Module.....	2-1
The Back Plane.....	2-1
The Microprocessor Board.....	2-1
The Analog / Digital I/O Board.....	2-2
The IEEE-488 Interface.....	2-2
The Front Panel.....	2-2
The Control Board.....	2-2
The Hydraulic/Pneumatic Module.....	2-3
Pneumatic/Hydraulic Intensifier.....	2-3
Reservoir Valve.....	2-4
Fluid Reservoir.....	2-5
System Valve.....	2-5
High Speed System Transducer.....	2-5
High Accuracy Pressure Sensor.....	2-5
Optional - Second High Accuracy Sensor.....	2-5
Test Port.....	2-5
Supply Port.....	2-5
Reservoir Select Valve.....	2-5
3 Installation.....	3-1
Introduction.....	3-1
Unpacking the Calibrator.....	3-1
Cautions.....	3-2
Powering Up the Calibrator.....	3-2
Hydraulic/Pneumatic Connections.....	3-3
Air Supply Port.....	3-3
Test Port.....	3-3
Reservoir.....	3-3
Purge Hydraulic System.....	3-3
Tutorial.....	3-4
4 Local Operation.....	4-1
Local Operations.....	4-1
Numeric Keypad.....	4-1
Function Keys.....	4-1
Arrow Keys.....	4-1
Cancel, Prev, Abort.....	4-2
Measuring Pressure.....	4-3
Multi-Range Sensor - Options.....	4-3
Selecting Pressure Units.....	4-3
Defining a New Pressure Unit.....	4-4
Changing the Number of Decimals.....	4-4
Setting the Alarm Limits.....	4-4
Using Head Pressure Correction.....	4-5
Set Tare Mode.....	4-5
Controlling Pressure.....	4-5
Control Modes.....	4-5
Normal Mode.....	4-5
Cycle Modes.....	4-6
Setting the Pressure Setpoint.....	4-6
Entering/Exiting Control Mode.....	4-6
Setting Slew Rate.....	4-6
Stepping and Jogging.....	4-7

Programming Sequences.....	4-7
Storing a Sequence in Memory	4-7
Preparing to Program.....	4-7
Program name	4-7
Configuration	4-7
Number of Set-Points.....	4-7
Set Point Pressure and Tolerance.....	4-8
Dwell time.....	4-8
Max time	4-8
Mode of entry.....	4-8
Entering a New Program	4-8
Automatically Generating a Program.....	4-9
Changing the Name of a Program.....	4-9
Changing an Existing Program.....	4-9
Changing the Configuration Stored with a Program.....	4-10
Running a Program.....	4-10
Configuration.....	4-11
Test Access Code	4-11
Bargraph Maximum.....	4-11
Key Click.....	4-11
Date/Time.....	4-11
5 Remote Operation	5-1
Remote Operation.....	5-1
Capabilities	5-1
IEEE-488.....	5-1
RS-232.....	5-2
Remote/Local Operation.....	5-2
Configuration.....	5-3
Device Messages.....	5-3
SCPI Command Format	5-3
SCPI Response Format.....	5-3
ANSI/IEEE 488.2-1987 Command Summary.....	5-4
SCPI Command Summary	5-4
Example SCPI Commands.....	5-6
SCPI Status Registers.....	5-6
Interface Panel Emulation.....	5-7
Serial Operation	5-7
6 Maintenance.....	6-1
Introduction.....	6-1
Observing the Calibrator's Full Scale Rating.....	6-1
Observing the Software Version Number.....	6-1
Preventive Maintenance.....	6-1
Initiating the Calibrator's Self Test.....	6-1
Removing the Calibrator's Cover.....	6-1
Processor Battery	6-2
Calibration	6-2
Calibration Instructions—Single and Dual Sensor.....	6-3
Storing the Coefficients.....	6-4
Calibration Instructions—Multi-Range Sensor.....	6-5
Preparation.....	6-5
Storing the Coefficients.....	6-7
Editing the Calibration Coefficients.....	6-7

Zeroing	6-8
Cleaning	6-8
7 Preparation for Storage & Shipment	7-1
Disconnecting the Calibrator	7-1
Packing Instructions.....	7-1
Shipping Instructions	7-2
Appendices	
A Summary of Specifications	A-1
B Summary of Error Messages	B-1

List of Tables

Table	Title	Page
1-1.	Symbols.....	1-3
1-2.	7615 DPC Options List.....	1-5
2-1.	Conversion Factors.....	2-3
3-1.	General Specifications & Parameters.....	3-2
5-1.	RS-232 Pin Allocations.....	5-2

List of Figures

Figure	Title	Page
2-1.	DPC Block Diagram	2-2
2-2.	RUSKA 7615 Calibrator Hydraulic/Pneumatic Diagram	2-4
4-1.	RUSKA 7615 Front Panel.....	4-1
4-2.	Menu Tree	4-2

Chapter 1

General Information

Introduction

This manual contains operation and routine and preventive maintenance instructions for the 7615 Hydraulic Pressure Controller/Calibrator (Calibrator), manufactured by Fluke. This section of the manual provides general information about the Calibrator and presents its features and options.

General Information

The RUSKA 7615 Calibrator uses transducers to provide the precise measurement of pressure. During normal operation, the Calibrator performs in either Measure Mode or Control Mode.

In Control Mode, the Calibrator simultaneously measures and controls pressure. Control Mode is commonly used in the calibration and testing of pressure gages, transducers, pressure switches, and production pressure instruments.

In Measure Mode, the Calibrator measures pressure. Typically, Measure Mode finds applications in research laboratories, testing of gages and transducers.

How to Contact Fluke

To order accessories, receive operating assistance, or get the location of the nearest Fluke distributor or Service Center, call:

- Technical Support USA: 1-800-99-FLUKE (1-800-993-5853)
- Calibration/Repair USA: 1-888-99-FLUKE (1-888-993-5853)
- Canada: 1-800-36-FLUKE (1-800-363-5853)
- Europe: +31-402-675-200
- China: +86-400-810-3435
- Japan: +81-3-3434-0181
- Singapore: +65-738-5655
- Anywhere in the world: +1-425-446-5500

Or, visit Fluke's website at www.fluke.com.

To register your product, visit <http://register.fluke.com>.

To view, print, or download the latest manual supplement, visit <http://us.fluke.com/usen/support/manuals>.

Safety Information

Safety Summary

The following are general safety precautions that are not related to any specific procedures and do not appear elsewhere in this publication. These are recommended precautions that personnel must understand and apply during equipment operation and maintenance to ensure safety and health and protection of property.

Keep Away From Live Circuits

Operating personnel must at all times observe safety regulations. Do not replace components or make adjustments inside the equipment with the voltage supply connected. Under certain conditions, dangerous potentials may exist when the power control is in the off position due to charges retained by capacitors. To avoid injuries, always remove power from, discharge, and ground a circuit before touching it.

Do Not Service or Adjust Alone

Do not attempt internal service or adjustment unless another person capable of rendering aid and resuscitation is present.

Resuscitation


Personnel working with or near dangerous voltages shall be familiar with modern methods of resuscitation. Such information may be obtained from your local American Medical Association.

Electrostatic Discharge Sensitive Parts



⚠ Caution

Electrostatic discharge sensitive (ESDS) is applied to low power, solid-state parts which could be damaged or destroyed when exposed to discharges of static electricity. Maintenance personnel are often not aware that an ESDS part has been damaged or destroyed because electrostatic discharges at levels less than 4,000 volts cannot be seen, felt, or heard.

When the ESDS symbol  appears between a paragraph number and paragraph title, the entire paragraph and all subparagraphs shall be considered ESD sensitive. When the ESDS symbol appears between a step number and the step test, the step shall be considered ESD sensitive.

Compressed Air

Use of compressed air can create an environment of propelled foreign matter. Pressure systems safety precautions apply to all ranges of pressure. Care must be taken during testing to ensure that all pneumatic connections are properly and tightly made prior to applying pressure. Personnel must wear eye protection to prevent injury.

Personal Protective Equipment

Wear eye protection approved for the materials and tools being used.

Inert Gases

Operation of pressure equipment may be accompanied by the discharge of inert gases to the atmosphere. The result is a reduction of oxygen concentration. Therefore, it is mandatory that all exhaust gases be vented outside the work area.

⚠ Warning


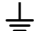





If the equipment is used in a manner not specified by the manufacturer, the protection provided by the equipment may be impaired. The AC main plug, switch and power cord shall remain readily accessible for operation.

Symbols Used in this Manual

In this manual, a **Warning** identifies conditions and actions that pose a hazard to the user. A **Caution** identifies conditions and actions that may damage the Calibrator.

Symbols used on the Hydraulic Pressure Controller/Calibrator (Calibrator) and in this manual are explained in Table 1-1.

Table 1-1. Symbols

Symbol	Description
	AC (Alternating Current)
	Earth Ground
	Important Information: refer to manual
	Shock Hazard
	Do not dispose of this product as unsorted municipal waste. Go to Fluke's website for recycling information.
	Electrostatic discharge Sensitive (ESDS)
	This equipment meets the requirements of all relevant European safety directives. The equipment carries the CE mark.

Features

The following features are standard on all RUSKA 7615 Calibrators.

NIST Traceability

All Calibrator's are calibrated using RUSKA deadweight gages, which are directly traceable to the National Institute of Standards and Technology (NIST). All instruments are provided with a NVLAP accredited calibration certificate.

Power Supply

The Calibrator's universal power supply accepts AC voltages from 100 – 120 / 220 – 240 VAC. This outputs supply voltages of +5 VDC, +12 VDC, -12 Vdc, and 24 VDC which are distributed to the Back Plane Board and Control Board.

Measurement While Control

The Calibrator simultaneously displays the commanded pressure, the actual pressure, and the difference between the two. A bar graph shows the user how close the actual pressure is to the commanded pressure, as well as how close the commanded pressure is to the Calibrator's full scale pressure.

Friendly Display

The Calibrator's vacuum fluorescent display combines a bright, low-glare readout with a wide viewing angle. During normal operation, the measured pressure is easily visible from a distance of 10 feet (3 meters).

Adjustable Pressure Display

The pressure display can be adjusted to show one decimal greater than or less than the default resolution.

Ease of Operation

An intuitive, menu-driven interface makes the Calibrator easy to use. Frequently used selections such as the units of measure are restored to memory each time the Calibrator powers up.

Easily Programmable

The Calibrator's powerful microprocessor provides the basis for smart electronics. With a few simple keystrokes, the user can set limits on the system pressure, create unique units of measure, program a test sequence, and more.

Attractive Desktop Packaging

A sturdy aluminum case houses all of the Calibrator's hydraulic, pneumatics, electronics, and user controls.

Power-On Self Test (POST)

Upon power-up, the Calibrator quickly tests its hardware and software. After the Calibrator completes this test, the user can select more extensive self-tests for the hydraulic and electronics.

Ease of Calibration

A menu drive calibration procedure can be performed either remotely or entirely from the front panel. No disassembly is required, and there are no potentiometers to tune.

Automatic Zero Adjust

At the user's request, the Calibrator's software automatically performs the zero adjustment, with no potentiometers to tune.

Automatic Head Correction

The Calibrator automatically corrects for head pressure, between the Calibrator and the DUT (Device Under Test) taking into account the density of the test fluid.

Choice of Medium

The hydraulic Calibrator can be used with various non-corrosive fluids as pressure media.

Choice of display units

Standard units include inches of mercury at 0°C and 60°C, kiloPascals, bars, pounds per square inch, inches of water at 4°C, 20°C, and 25°C, kilograms per square centimeter, millimeters of mercury, centimeters of mercury at 0°C, and centimeters of water at 4°C. Altitude and airspeed units include feet, meters, knots, and kilometers/hour. In addition to these predefined units, four user-defined units are programmable.

Communications Interface

RS-232 serial interface and IEEE-488 interfaces are standard. The user's computer communicates with the Calibrator through the Standard Commands for Programmable Instruments (SCPI) protocol. *The Calibrator can also be configured to accept existing software written for the RUSKA Series 6000 DPG.*

Standard Equipment & Options

A standard hydraulic Calibrator comes with this manual, and a power cord. The standard hydraulic Calibrator is fully functional, but the following options are also available.

Additional Power Cords: Additional power cords are available for most countries of the world.

Table 1-2. 7615 Calibrator Options List

Option	Part Number
User's Manual	3952199
Power Cord: USA	284174
Power Cord: Canada	284174
Power Cord: Central Europe	769422
Power Cord: India	782771
Power Cord: Japan	3898323
Power Cord, Australia/New Zealand	658641
Battery, Spare	2135249

Chapter 2

Theory of Operation

Introduction

The Calibrator's power supply, electronics, pneumatics, hydraulics, and sensor combine to form a complete, stand-alone, measure and control instrument. This portion of the manual breaks the Calibrator down into its component modules (See Figure 2-1) and provides a general discussion of each.

The Power Supply

The Calibrator's universal power supply accepts AC voltages from 115/230 VAC volts. This outputs supply voltages of +5 VDC, +12 VDC, -12 VDC, and 24 VDC which are distributed to the Back Plane Board and Control Board.

The Electronics Module

The Calibrator's electronics module consists of an electronic back plane the Microprocessor Board, Analog/Digital I/O Board, Pressure Control Board, IEEE interface, and the Front Panel.

The Back Plane

The Microprocessor Board, Analog/Digital I/O Board, Control Board and the IEEE Interface all plug into the Back Plane Board. The +5 VDC, + 12 VDC, and - 12 VDC voltages supplied by the Power Supply is distributed from the Back Plane Board to the four plug in boards and to the front display.

The Microprocessor Board

All of the systems software resides in non-volatile, programmable, read-only memory (Flash EPROM) on the Microprocessor Board. This software contains all of the instructions that operate the instrument, as well as the conversion factors that the instrument uses to translate the detected pressure into the units selected by the user. These factors are given in Table 2-1.

When the Calibrator powers up, its software is loaded into random access memory (RAM), which is also on the Microprocessor Board. At the same time, the values stored in EEPROM are restored to memory.

Another important component on the Microprocessor Board is the lithium battery, which continuously updates the Calibrator's date and time, even when the unit is powered down.

The Microprocessor Board also supports the RS-232 serial interfaces, which allow the user's computer to communicate with the Calibrator.

The Analog / Digital I/O Board

The Calibrator's Analog/Digital I/O board, which plugs directly into the back plane, is utilized by the Calibrator to read various analog and digital signals and to drive system solenoids.

The IEEE-488 Interface

The Calibrator's IEEE-488 (GPIB) Interface card, which plugs directly into the Back Plane, provides the Calibrator with an IEEE-488 interface. This interface allows the user to automate the measurement and control processes.

The Front Panel

The Microprocessor Board and Control Board work together to interpret all input from the Front Panel. The Front Panel contains the vacuum fluorescent display and rubberized keys used to operate the Calibrator.

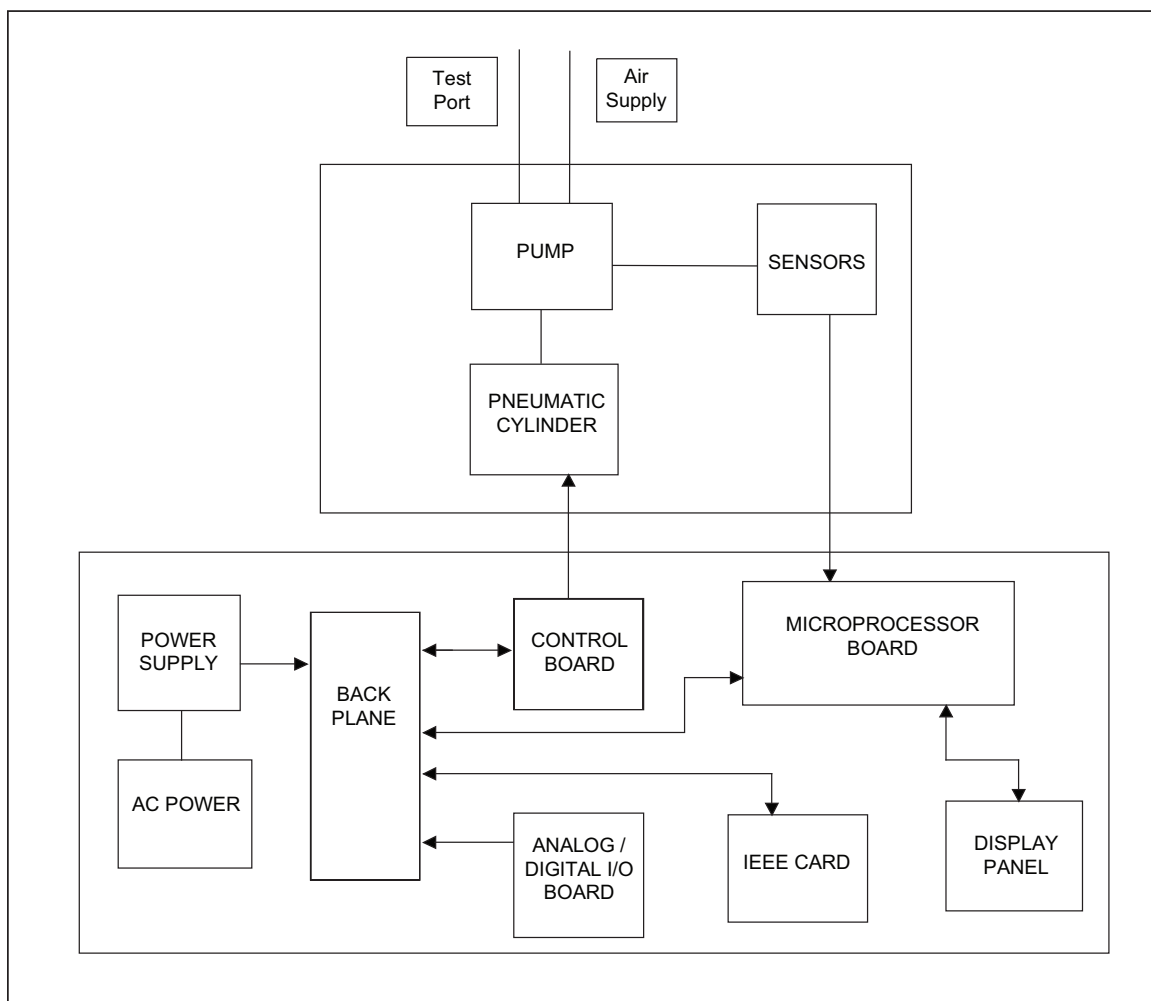


Figure 2-1. Calibrator Block Diagram

gko001.eps

The Control Board

The Control Board is used for the pneumatic control of pressure into the Pneumatic Cylinder. It drives the 24 volt high speed supply and exhaust control valves which are used to drive the pneumatic/hydraulic intensifier.

Table 2-1. Conversion Factors

Symbol	Description	Conversion Factor
inHg	inches of mercury (0°C)	= kPa x 0.2952998
inHg	inches of mercury (60°C)	= kPa x 0.296134
kPa	kiloPascals	= kPa x 1.0
bar	bars	= kPa x 0.01
psi	pounds per inch ²	= kPa x 0.1450377
cmH ₂ O	centimeters of water (4°C)	= kPa x 10.19744
inH ₂ O	inches of water (4°C)	= kPa x 4.014742
inH ₂ O	inches of water (20°C)	= kPa x 4.021898
inH ₂ O	inches of water (25°C)	= kPa x 4.024108
kg/cm ²	kilograms per cm ²	= kPa x 0.0101972
mmHg	millimeters of mercury (0°C)	= kPa x 7.500605
cmHg	centimeters of mercury (0°C)	= kPa x 0.7500605
knots	airspeed knots	per NASA TN D-822
km/hr	kilometers per hour	= knots x 1.852
feet	feet of altitude	per MIL-STD-859A
meters	meters of altitude	per MIL-STD-859A
user1	user defined	= kPa x User defined
user2	user defined	= kPa x User defined
Pa	user defined (Pascals)	= kPa x 1000.0
%FS	user defined (percent of full scale)	= kPa x 0.1450377 (for 100 psi models)

The Hydraulic/Pneumatic Module

The hydraulic/pneumatic module, shown on 2-2, houses components which generate and accurately measures hydraulic pressure.

Pneumatic/Hydraulic Intensifier

The pneumatic/hydraulic intensifier consists of a air driven hydraulic pump which varies the system pressure by compressing and expanding system fluid. The pump plunger is linked to a large area piston of a pneumatic cylinder which varies its position through a 0 to 100 psi pneumatic control utilizing high speed supply and exhaust control valves. The pump has a position sensor which tracks the position of the pump plunger. The pump and the system is protected from the over pressure by a rupture disc. The pump pressure is monitored by a high response pressure transducer.

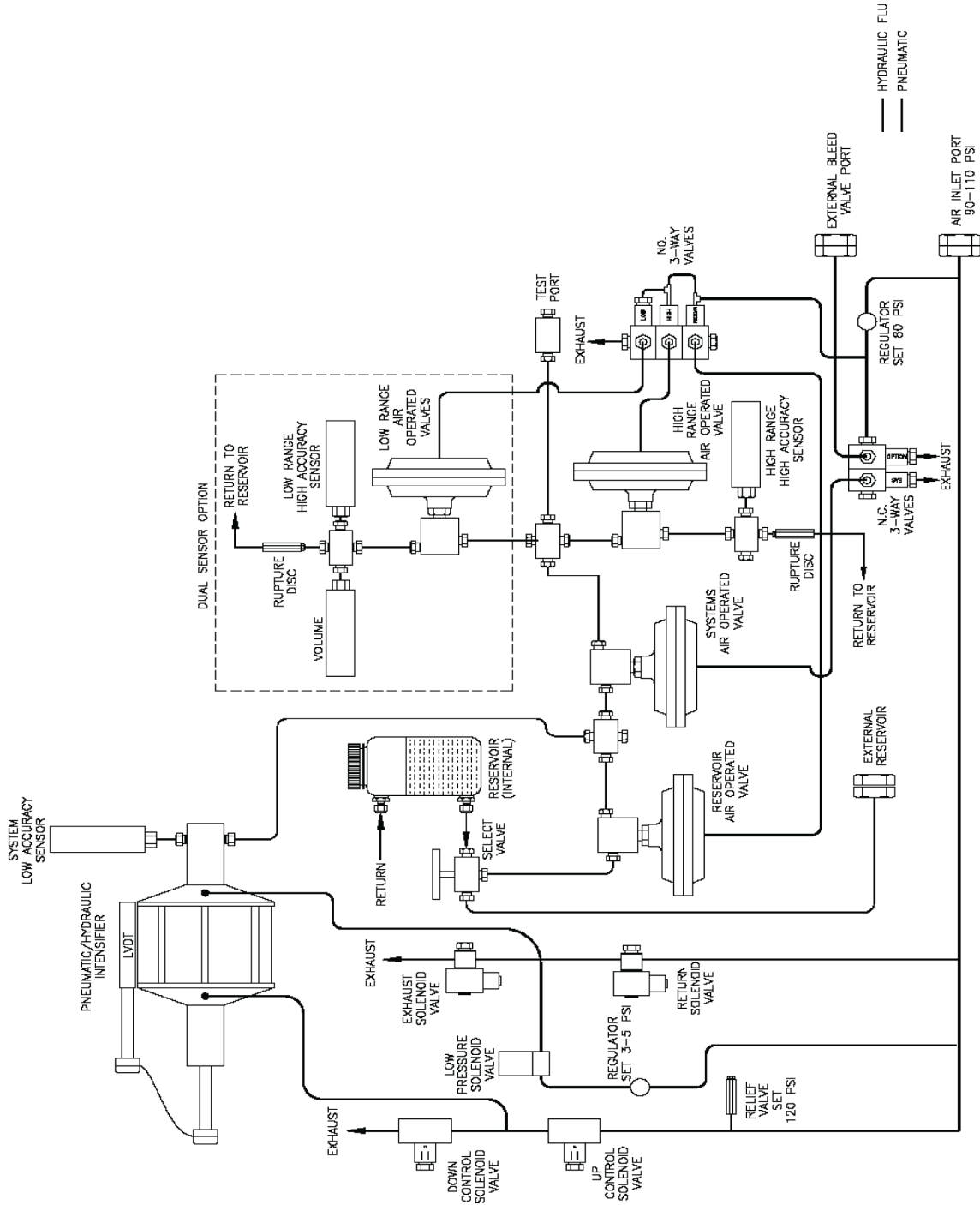


Figure 2-2. RUSKA 7615 Calibrator Hydraulic/Pneumatic Diagram

gko002.bmp

Reservoir Valve

The reservoir valve isolates the pump from the reservoir. It is a high pressure valve actuated by a pneumatic dome valve. This pneumatic dome valve has a diaphragm operator which is driven by an internally regulated 80 psi air pressure which is sourced from the air supply port. The air is controlled to this valve through a three way normally open solenoid valve.

Fluid Reservoir

The reservoir supplies system fluid to the pump through the reservoir valve. The reservoir has a 1000 cc capacity and is provided with a low level sensor.

System Valve

The system valve isolates pump from the system. It is a high pressure valve actuated by a pneumatic dome valve. This pneumatic dome valve has a diaphragm operator which is driven by an internally regulated 80 psi air pressure which is sourced from the air supply port. The air is controlled to this valve through a three way normally open solenoid valve.

High Speed System Transducer

The High Speed system transducer is used for the pressure measurement during high speed pressure control. This is indicated by the system by labeling the pressure reading as “High Speed” just below the measured pressure value on the main screen. Once the pressure has stabilized, the High Accuracy Sensor (see next section) is then displayed. This is indicated by the system by replacing the “High Speed” label with the word “Precise”. The high speed system transducer is periodically compared and automatically aligned to the high accuracy pressure sensor.

High Accuracy Pressure Sensor

The system transducer is used for the high accuracy measurement of pressure. This transducer should be calibrated at regular interval to maintain its stated accuracy.

An optional dual sensor version is also available in which case there would be two system transducers each of which has an accompanying isolation valve and pressure relieving mechanism for sensor protection (See next section, Chapter 2, Optional - Second High Accuracy Sensor).

Optional - Second High Accuracy Sensor

The system is also available with an optional second High Accuracy Sensor. The second sensor is provided with a lower full-scale pressure range than the primary High Accuracy Sensor. This is provided in order to allow the system to operate through a wider pressure range while maintaining high accuracy pressure measurements. This transducer should be calibrated at regular interval to maintain its stated accuracy. This sensor is isolated from the system when the system is operating at pressures higher than its full scale operating range. It is also protected by its own pressure relief mechanism. When a second sensor is installed into the system, the system can automatically switch between the two sensors.

Test Port

The device under test is connected to this port.

Supply Port

The supply air is connected to the supply port. The supply air should be regulated between 100 to 110 psi. The pneumatic side is protected by a relief valve.

Reservoir Select Valve

This three-way valve is located on the back panel of the instrument. Internal or external reservoir is selected using this valve. If external reservoir is selected then an external reservoir must be connected to the external reservoir port connection. Normally this valve is set in the mid position (off) during shipment.

Chapter 3

Installation

Introduction

This portion of the manual discusses initial installation for the RUSKA 7615 Calibrator. Installing the Calibrator is a relatively simple process of unpacking the Calibrator, powering it up, and then using the front panel to configure the system.

Unpacking the Calibrator

Carefully unpack all components, checking for obvious signs of damage. In addition to any nonstandard items ordered with the Calibrator, the shipment should contain at least the following items:

- RUSKA 7615 Calibrator
- power cord, and this user's manual

If necessary, report any shipping damage to the freight agency. Remove masking tape, strings, and packing materials from all components. If possible, save the packing materials for future use.

Finally, install the Calibrator in a location that meets the requirements listed in Table 3-1.

Note

The Calibrator should not be subjected to mechanical shocks during installation or use. It should be mounted on a rigid bench or in a sturdy 19 inch rack.

Table 3-1. General Specifications & Parameters

Parameter	Value	Model
Operating Humidity Range Storage Humidity Range	5% to 95% RH None ¹	all
Operating Temperature Storage Temperature	5 °C to 50 °C -20 °C to 70 °C	all
Air Supply – Pressure Range Min. Dew Point Peak Flow Capacity	100 – 110 psig -10°C 300 SCFH	all
Power Requirements	115 VAC or 230 VAC	all
Warm Up Period	< 30 min.	all

¹ Note: If there is any condensation, the Calibrator must be thoroughly dried before power is applied.

Cautions

The following cautions should be heeded at all times to insure safe operation of the Calibrator.

⚠ ⚠ Warning

Never operate the unit with the cover removed. The power supply has internal voltages near 400 volts.

Never apply more than 110% of the unit's full scale pressure range to the test port. Never try to control while a pressure source is connected to the test port.

Avoid thermal and mechanical shock to the instrument. This will affect performance and require re-zeroing.

⚠ Caution

Never operate the unit without a minimum volume of 3 in³ (50 cc) attached to the test port. This can result in damage to the sensor.

Powering Up the Calibrator

1. First, plug the power cord supplied with the Calibrator into the power connector on the Calibrator's rear panel.

Note

Grounding for the Calibrator is provided through the power cord.

2. Next, plug the power cord into a receptacle rated for either 115 VAC or 230 VAC (check name plate). If a different power cord is necessary for your receptacle, consult Chapter 1, Table 1-2, for available power cords.
3. Finally, turn on the Calibrator by flipping the POWER switch on the rear panel. *In about 10 seconds*, the MEASURE screen will appear on the vacuum fluorescent display, and the front panel will be fully operational.

Hydraulic/Pneumatic Connections

Pneumatic connection to the Calibrator is straightforward. The following sections discuss each port.

Air Supply Port

The supply port must be connected to a well regulated source of dry shop air. Air supply should be regulated between 100 to 110 psi. Supply port is a ¼ tube connection. The air supply source should be capable of provide a peak flow rate of 150 Standard Liters per Minute (300 SCFH).

Note

The Air Supply must be a clean air supply dried to a minimum dew point of -10°C .

Test Port

The test port is designed to control a wide range of volumes. Any leaks on the test port will cause measurement errors. For best results a minimum volume of approximately 10 in³ (160 cc) is recommended. For High Speed applications, further minimizing the volume significantly increases the system speed. A 3 in³ (50 cc) volume or less is recommended for high speed applications. Operating the 7615 at volumes less than 3 in³ (50 cc) could result in damage to the sensor.

The test port is ¼ high pressure connection (autoclave F250C)

Reservoir

The system reservoir must be filled with a no-corrosive fluid and the system bled to remove all air from the system. Any air in the system will make the pressure controller erratic.

In the back panel, there is a three-way valve to select either the internal reservoir or the external reservoir. If you are selecting internal reservoir then make sure that the valve is turned to point towards internal reservoir.

Purge Hydraulic System

There are a variety of methods to fill a system with fluid and purge it of air. It is important to understand that the more air that is trapped in a hydraulic system, the less responsive the system will operate.

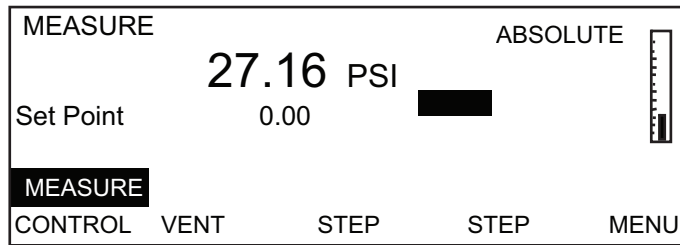
A few of the common methods of purging air from the system are noted as follows:

1. With a pressure port located at the end of the manifold that is believed to have air present, open a port located at the highest physical location in the manifold and then start to pressurize the 7615. With the port open to atmosphere, significant pressure will not build in the manifold. The fluid in the system will displace the air out of the system through the open port. Once fluid begins to flow from the open port, the 7615 controller can be stopped and the port that is open to atmosphere can be closed. The system is now ready for operation.
2. A manifold holding the device's under test can be pre-filled prior to being placed on the 7615. The best way to pre-fill the manifold is to first evacuating the manifold with vacuum pump and then switching a three-way valve to isolate the vacuum pump and open the line to a fluid reservoir allowing the fluid to fill the manifold. This will minimize the air in the system.
3. Same as option 1) above but using an optional higher flow capacity pump to fill the system quicker than what the 7615 primary control pump can.

- Another method to fill or purge the device under test is to use the system's "purge fill" option. To use this option, from the front panel main menu press MENU, TEST, PURGE and FILL PUMP. Enter the number of Fill Cycles (Charge/discharge) you would like to run. Break loose the connection at the top of manifold holding device under test and then press ENTER to start the operation. This will fill and drive out the air from the loose connection. Stop the system as soon as clear fluid starts coming out of the loose connection and then tighten the connection.

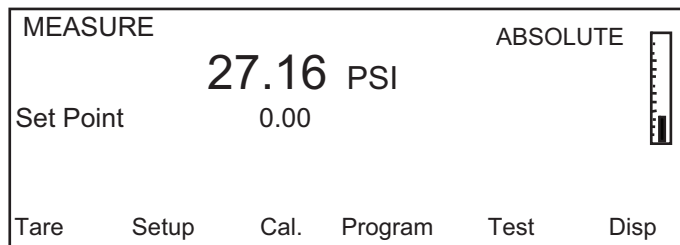
Tutorial

At this point, the Calibrator should be in the power-up state and the hydraulic/pneumatic connections ready. The Calibrator should be displaying a screen similar to the one shown below. (If the bottom line of the display is not showing these options press [F6] if an error message is displayed, then press **Prev**).

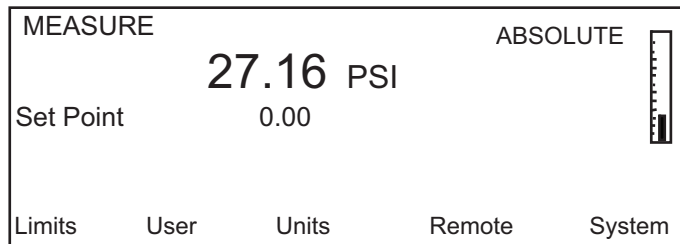


This is the Main Menu. It is at the top level of the menu tree and all descriptions in this manual start from this point. The top center of the display shows the current pressure (27.16 psi). The upper left corner shows the current mode of the Calibrator (Measure or Control). The right side of the screen shows a bar graph displaying the current pressure relative to a user-configurable full-scale value. Below the pressure is the pressure control Set Point with a numeric scratchpad for entering new Set Point value. The bottom line of the screen displays the current assignments of the function keys [F1] through [F6] that are located below the display.

- The first thing we will do is change the pressure units. The units are changed from the screen MENU/SETUP/UNITS. This means from the Main Menu press Menu (the F6 key). This will display the MENU screen.



- Now press Setup (the F2 key). This will display the MENU/SETUP screen.



- Press Units (the **F3** key). This will display the Menu/Setup/Units screen. The list of available units will be displayed with the current units highlighted.

kPa	mmHg	0°	cmH2O	4°C	user1	feet
bar	CmHg	0°	inH2O	4°C	user2	meters
PSI	inHg	0°	inH2O	20°C	Pa	knots
kg/cm2	inHg	60	inH2O	25°C	%FS	km/hr
Define						

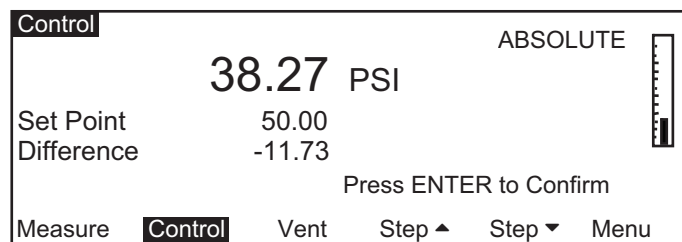
- Use the arrow keys located on the right of the display to move the highlight bar.
- When the unit desired is highlighted, press the ENTER key on the far right side of the front panel under the numeric keypad. The display will return to the Menu/Setup screen with the current units.
- Press PREV to return to the MENU screen.
- Press PREV again to return to the Main Menu.

The second part of this tutorial illustrates how to set up the Calibrator to generate pressure. The system must be fully charged with fluid, the air supply connected, and the test port connected to a closed volume full of fluid.

- From the Main Menu use the numeric keypad to enter the set-point pressure. The pressure is entered in the units set in the previous illustration. As you enter the pressure, each digit will be displayed in the numeric scratchpad (the highlighted box in the middle of the display). If you make a mistake, press the CLEAR key (under the numeric keypad) and the numeric scratchpad will be cleared.
- When the entry is correct, press the ENTER key. The scratchpad will be cleared and the value will appear to the left of the scratchpad.
- Now that the starting pressure is entered we can now enter Control mode. Press CONTROL (the F2 key). The highlight will move from MEASURE to CONTROL and the message “Press Enter to Confirm” will appear above the function key definitions. Notice that the upper left corner still shows MEASURE. The Calibrator stays in Measure mode until the change is confirmed.



- Press ENTER to confirm the mode change. The upper left corner will change to CONTROL and the pressure will start moving towards the set-point.



12. After the pressure is stabilized press the Step ↑ or Step ↓ key. The scratchpad will be updated with a new set-point. The step size defaults to 10% of full scale. (The step size is set to other values in the MENU/SETUP/LIMITS screen.)
13. Press ENTER to accept the new set-point. The controller will move to the new set-point.
14. Press MEASURE (the F1 key). The Calibrator will change to Measure mode. No confirmation is necessary to leave Control mode.

Chapter 4

Local Operation

Local Operations

The local interface consists of a vacuum fluorescent display and a set of keys. The display shows the system status and menu options. The keys are separated according to their function.

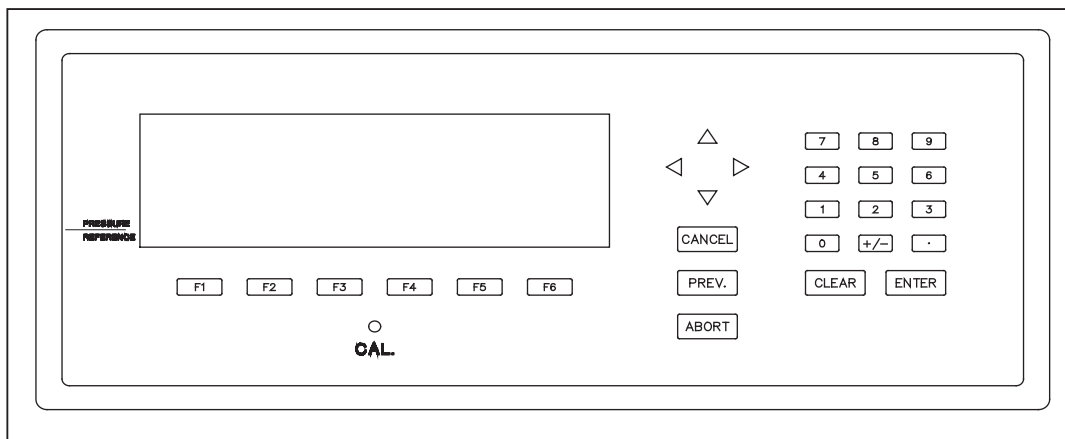


Figure 4-1. RUSKA 7615 Front Panel

gko009.eps

Numeric Keypad

This includes the numeric digits, the decimal point, and the change sign key. The CLEAR key will clear the numeric entry field. The ENTER key accepts the entered number or confirms a command.

Function Keys

The F1 through F6 keys are used to navigate the menus and perform pre-defined functions. The name of the function is displayed above the key on the bottom line of the display.

Arrow Keys

The up and down arrows select a field for editing. The left and right arrows choose between multiple choice options for the selected field. The up and down arrows are also used for small pressure changes (pressure jog) at the main menu.

Cancel, Prev, Abort

These keys are used to stop, undo, or exit the current operation. The CANCEL key will return all edited fields on the current entry screen to their original values. It will also stop the current program sequence or calibration process. The PREV key will exit the current menu to the previous menu. The ABORT key will cause an immediate shutdown of the system.

Figure 4-2 is a menu tree showing the relationship between all the menus in the system. To move to a lower menu press the function key with the correct label. To move towards the Main Menu press the PREV key. To go to one of the menus from the main menu press the F6 key. The F1 key places the unit in Measure Mode. The F2 key places the unit in Control Mode. ENTER must be pressed to actually enter the Control Mode. The F3 key places the unit in Vent Mode. This opens the test port to atmosphere and rapidly reduces the pressure. ENTER is required to confirm the operation. The **F4** and **F5** keys step the control set-point by the correct step amount.

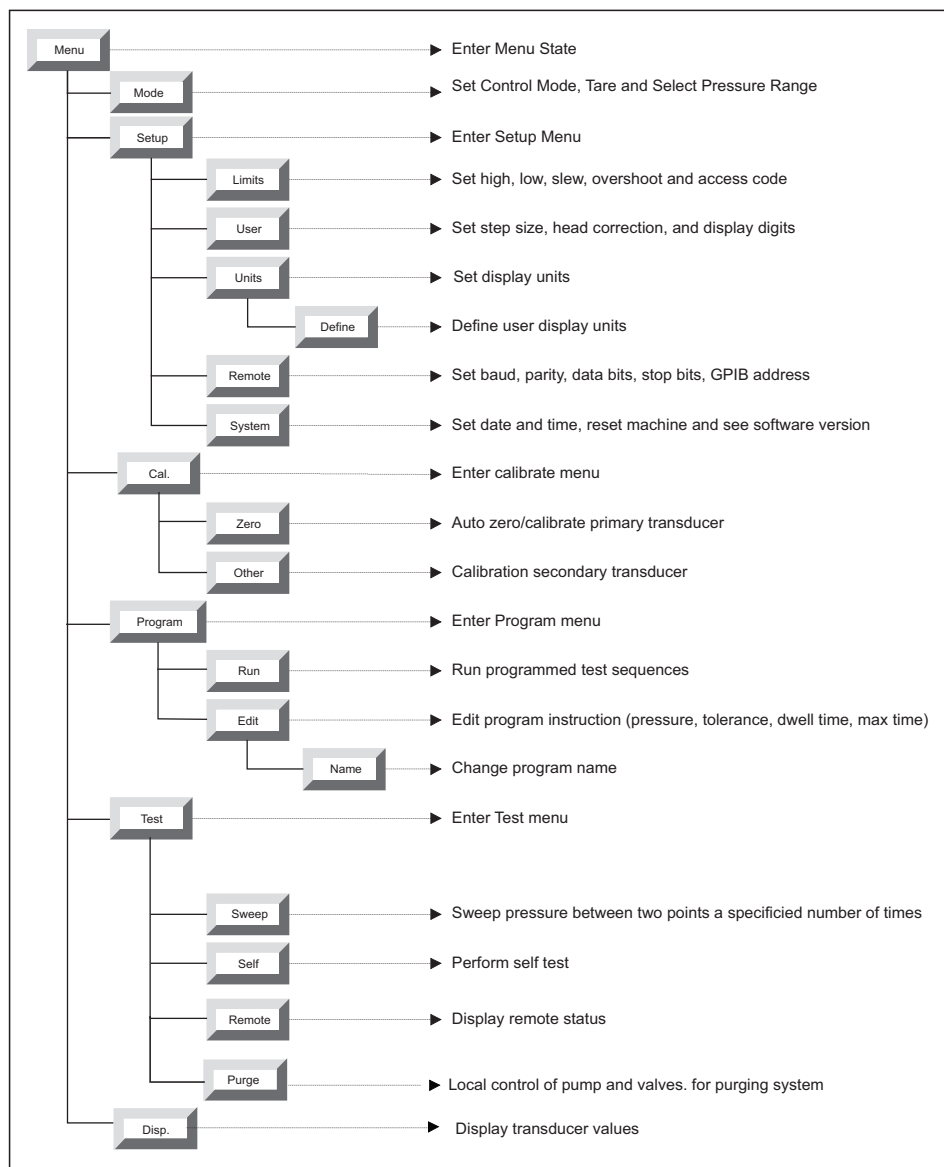
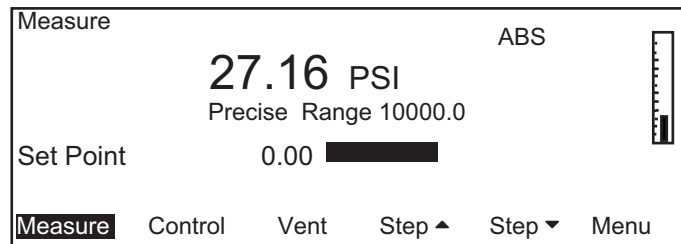


Figure 4-2. Menu Tree

gko012.eps

Measuring Pressure

The Main Menu displays the measured pressure in double size numbers. To the right of the pressure is the current unit and type (Tare or Absolute). The Main Menu can always be reached by repeatedly pressing **PREV**. Just below the measured pressure value is a label stating either “High Speed” or “Precise”. This is to provide the user with an indication of which sensor is actively displaying. During high-speed pressure control, the system displays the word “High Speed” to indicate that the system is displaying the pressure as measured by the high speed, lower accuracy pressure sensor (See Chapter 2, High Speed System Transducer). Once the pressure stabilizes, the system then displays the reading from the High Accuracy sensor (See Chapter 2, High Accuracy Pressure Sensor, and Optional – Second High Accuracy Sensor) and indicates this by displaying the word “Precise” as shown in the example below. For systems with multiple pressure ranges, the full-scale pressure range (in the current unit of measure) of the active sensor is displayed below the displayed unit of measure. In the example below, the active sensor range is a 10,000 psi full scale sensor.



Multi-Range Sensor - Options

The RUSKA 7615 Calibrators are available as multi-range instruments. The number of sensors available in an instrument can range from one to six. To select an active range, from the main menu, select the MENU/MODE keys. The F5 function key is labeled as “range”, and by depressing the F5 key, the system will cycle between the various available full-scale pressure ranges. The full-scale ranges are displayed in the same unit of measure that the measured pressure is actively displaying.

Note

To switch between pressure ranges, the actual measured pressure must be less than 100 psi.

Selecting Pressure Units

The Calibrator uses the conversion factors listed in Chapter 2, Table 2-1, to translate the pressure from kiloPascals to one of the Calibrator’s units of measure. These include inches of mercury, kilopascals, bars, pound per square inch, feet, meters, knots, and kilometer per hour. In addition to these predefined units, four user-defined units are available.

1. The pressure units are selected from the Units menu. From the Main Menu (press **PREV** until the Main Menu appears) press **Menu** [F6] | **Setup** [F2] | **Units** [F3]. The current units will be highlighted.
2. Use the Arrow Keys to highlight the desired pressure unit.
3. Press **ENTER** to accept the change. Press **PREV** to exit without changing the units.

Defining a New Pressure Unit

In addition to the standard units of measure provided by the Calibrator, four user-defined units are available. To create one of these units, the user enters a *name* that is one to six characters long and a *conversion factor* that is a multiple of kiloPascals (kPa).

For example, a millitorr, which equals one micron of mercury at 0 °C, is related to a millimeter of mercury by a factor of 1,000. Thus, based on the conversion factors listed in Chapter 1, Table 2-1, a millitorr would have a user-defined conversion factor of 7.500605 times 1,000, or 7,500.605. The user-defined name for this unit could be mtorr.

1. The pressure units are defined from the Units Define Menu. From the Main Menu (press PREV until the Main Menu appears) press Menu [F6] | Setup [F2] | Units [F3] | Define [F1].
2. Press Next ↓ [F2] until the desired user-defined unit is highlighted.
3. The following sequence is used to change the name of the selected unit.
 - a. Use the arrow keys to highlight the desired character in the matrix.
 - b. Press Add [F3] to add the character to the name entry box.
 - c. Repeat steps a and b until the desired name is entered. Press Clear [F4] to start over.
 - d. Press Enter [F5] to accept the name.
4. Use the numeric keypad to enter the conversion factor and press Enter to accept.
5. Press PREV to return to the Units Menu. The new unit definition may be selected.

Changing the Number of Decimals

Each unit has a default number of decimal places used for pressure display. This may be adjusted up or down by 1 decimal place.

1. The decimal digits are set from the Setup User Menu. From the Main Menu (press Prev until the Main Menu appears) press Menu [F6] | Setup [F2] | User [F2].
2. Press the down arrow key until the label Display digits is highlighted.
3. Use the Left and Right arrow keys to change the number of decimal digits.
4. Press PREV to exit the menu. Press CANCEL to return all edited fields to their original values.

Setting the Alarm Limits

The Calibrator continually checks the measured pressure against high, low, and slew rate limits. If the measured pressure exceeds the high limit, falls below the low limit, or changes faster than the slew rate limit an alarm is generated.

1. The alarm limits are set from the Setup Limits menu. From the Main Menu (press PREV until the Main Menu appears) press Menu [F6] | Setup [F2] | Limits [F1].
2. Press the up and down arrow keys to highlight the desired limit.
3. Use the numeric keypad to enter the new value.
4. Press ENTER to accept the new value.
5. Default [F1], Max [F2], and Min [F3] put standard values for the field into the numeric scratchpad.
6. Press PREV to exit the menu. Press CANCEL to return all edited fields to their original values.

Using Head Pressure Correction

The term *head height* refers to the vertical distance between the sensing element in the device under test and the Calibrator's sensor. Once the user inputs the head height and specific gravity of fluid used the Calibrator automatically corrects for head pressure.

1. Determine the PRESSURE REFERENCE line on the Calibrator's front panel. This line indicates the vertical location of the Calibrator's sensor.
2. Determine the vertical distance between the PRESSURE REFERENCE line and the sensing element in the device under test.
3. The head height is set from the Setup User menu. From the Main Menu (press PREV until the Main Menu appears) press Menu [F6] | Setup [F2] | User [F2].
4. Press Length [F1] to select either inches (in) or millimeters (mm) for the head height entry. The select units will appear on the Head line to the right of the number.
5. Highlight specific gravity and enter the specific gravity of the fluid used in the system.
6. Press the up or down arrow keys to highlight the label Head Height.
7. Use the numeric keypad to enter the height. Use a negative value if the DUT is below the Calibrator.
8. Press ENTER to accept the entry.
9. Press PREV to exit the menu. Press CANCEL to return all edited fields to their original values.

Set Tare Mode

The tare mode provides instant zeroing at the push of a button. The tare mode also allows switching from absolute to gage pressure for a short term tests.

1. The tare mode is set from the Tare menu. From the Main Menu (press PREV until the Main Menu appears) press MENU | MODE | TARE.
2. In this menu press TARE [F4] to toggle between Tare mode and Absolute mode. Tare value is displayed in the highlighted area.

Controlling Pressure

The 7615 is designed to control pressure to a commanded set-point. From the main menu, it is first recommended to enter a desired set-point (See Chapter 4, Setting the Pressure Set Point). Then select the CONTROL key, and you will be prompted to hit ENTER to continue. The system will then control the pressure to the commanded pressure value.

Control Modes

The standard control modes of operation are Normal and Cycle. To select the control mode, select the MENU/MODE key. To enter the cycle Mode, hit the [F4] key labeled cycle.

Normal Mode

This control mode suits high performance sensor calibration where overshoot is to be minimized. The control parameters and slew rates are optimized to give the fastest rate of change that is commensurate with minimal overshoot. At the end of the calibration cycle, the oil can be fast dumped to the reservoir or stepped down under control.

Cycle Modes

This mode of operation offers the fastest method of generating cyclic pressures and is ideal for fatigue testing and extended proof pressure cycling. Initially the 7615 controls to the maximum pressure. The pneumatic/hydraulic intensifier is then isolated from the system and then driven to the end of its travel. The pneumatic/hydraulic intensifier is then opened back to the system, and then cycled between its maximum and minimum travel limits. The result is that pressure is cycled between the maximum pressure and whatever minimum pressure that is achieved by the reduction in volume caused by the pump plunger fully retracting. The 7615 then logs the maximum and minimum pressures that were obtained by the pump plunger moving from the maximum to the minimum pump travel. The operator has the ability to set the number of cycles, dwell time, and the pressure tolerance. The maximum system pressure is automatically reset if it falls outside of the pressure tolerance. For this reason, in high speed applications, it is recommended that the pressure tolerance be set to a large value such as 3000 to 4000 psi.

Setting the Pressure Setpoint

The pressure set-point is the destination of the pressure control algorithm. It should be set before entering control mode. The pressure set-point is set to zero at power-up and whenever a pressure error occurs.

1. The pressure set-point is set from the Main Menu (press **Prev** until the Main Menu appears).
2. Use the numeric keypad to enter the new pressure set-point in the current pressure units.
3. Press ENTER to accept the entry or press CLEAR to clear the numeric scratchpad.

Entering/Exiting Control Mode

1. The control mode is set from the Main Menu (press PREV until the Main Menu appears).
2. Press CONTROL [F2] to enter control mode. ENTER must be pressed to confirm entry into control mode. Note that any entry in the numeric scratchpad will also be taken as the new pressure setpoint.
3. Press MEASURE [F1] to exit control mode. No confirmation is necessary.

Setting Slew Rate

Slew rate is the maximum rate of pressure change for the control algorithm.

1. The slew rate is set from the Setup Limits Menu. From the Main Menu (press PREV until the Main Menu appears) press Menu [F6] | Setup [F2] | Limits [F1].
2. Press the down arrow key until the label Slew Rate is highlighted.
3. Use the numeric keypad to enter a new value for Slew rate. Press ENTER to confirm.
4. Press PREV to exit the menu. Press CANCEL to return all edited fields to their original values.

Stepping and Jogging

In addition to entering a new value, the pressure set-point may also be changed by user-definable steps and by jogging small amounts. From the Main Menu (press PREV until the Main Menu appears) press Step ↑ [F4] to add the step amount to the current set-point. Press ENTER to confirm the set-point change. In the same way use Step ↓ to subtract the step amount from the current set-point. The up and down arrow keys may be used to jog the pressure. Each press increments or decrements the pressure in the least significant digit. If the up or down arrow key is held down the pressure will continue to change until the key is released. The jog increment is fixed but the step amount may be changed.

1. The step amount is set from the Setup User menu. From the Main Menu (press **PREV** until the Main Menu appears) press Menu [F6] | Setup [F2] | User [F1].
2. Press the up or down arrow keys to highlight the Step Size parameter.
3. Use the numeric keypad to enter a new value. Press ENTER to confirm.
4. Press PREV to exit the menu. Press CANCEL to return all edited fields to their original values.

Programming Sequences

Storing a Sequence in Memory

Consider an exercise that requires the Calibrator to start at 30 psi, go up to 50 psi, then come back down to 20 psi. Test sequences like this may be stored in the Calibrator's memory as a *program*.

One benefit of storing a sequence in memory is that the operator does not have to command each pressure separately every time the exercise is performed. Another benefit is that the user can specify a tolerance for each set-point pressure. Once a tolerance is set, instead of controlling the pressure to the exact set-point, the Calibrator will continue on to the next step once the pressure gets within the specified tolerance for that set-point. This gives the user a time advantage over controlling pressures manually.

Note

The Calibrator can store up to 1,000 program steps, which may be unevenly divided among a maximum of 20 named programs. Additional programs can be stored on memory cards.

Preparing to Program

Before entering a test sequence, the user is encouraged to consider the items discussed below.

Program name

Valid program names range from one to eight characters in length and can include numbers, upper case letters, and the /, %, and # symbols. For example, Exer#14 and %FS test are both valid names.

Configuration

Since a program may depend upon the current setup of the Calibrator, the current configuration is stored with the program. The user should set the units, limits, control parameters, etc., to the desired values before creating a program.

Number of Set-Points

Before entering the sequence, the user should determine the number of upscale *and* downscale set-points required to complete the exercise.

Set Point Pressure and Tolerance

Each set point in the program requires both a *pressure* and a *tolerance*, in the current units of measure. For example, one set-point might require a tolerance as low as 0.5 (min control) psi, whereas another set-point in the same program could be satisfied with a tolerance as high as 5 psi.

Dwell time

Once the pressure gets within the specified tolerance, the Calibrator starts a timer that runs for a certain number of seconds. As long as this timer is running, the Calibrator will not continue to the next set-point unless the *max time* elapses (see below).

Usually *dwell time* has a value of a few seconds, but a value of 0 can be used to create a pause in the program. When the dwell time is set to 0, the Calibrator switches to manual control once it gets within the tolerance value of the set-point pressure. The operator must then press a key on the front panel to continue the exercise.

Max time

The max time is the maximum time in seconds, including the dwell time, that the Calibrator can spend on one step of the program. After the max time elapses, the Calibrator will automatically proceed to the next set point in the program, even if the current set-point has not been achieved. Thus, the max time selection limits the amount of time that the Calibrator can spend on any one set point.

Mode of entry

If the upscale portion of the sequence *and* the downscale portion of the sequence both have the same highest and lowest set-points *and* consist of evenly spaced steps, the <Auto> option can be used to automatically generate the program.

However, if any part of sequence includes unevenly spaced steps or the starting and ending set-points are not the same, each step must be programmed individually. In the example given at the beginning of Chapter 4, Measuring Pressure, each step must be programmed individually since the starting set-point is 30 psi and the ending set-point is 20 psi.

Detailed instructions for entering these items are given in the sections that follow.

Entering a New Program

To “program” the Calibrator, the operator simply uses the keys on the front panel to change values on the Calibrator’s program editing screen. Instructions for entering each step of a new program are included below.

1. Insure that the units, limits, and control parameters are at their desired values.
2. The program is entered from the Program menu. From the Main Menu (press PREV until the Main Menu appears) press Menu [F6] | Program [F4].
3. Use the arrow keys to highlight new.
4. Press Edit [F4]. Since new was highlighted the Calibrator will create a new program and give a default name of NAMEnn, where nn is a two digit number. The program editing screen will appear, displaying the first step.
5. Using the numeric keypad enter the values for Pressure, Tolerance, Dwell time, and Max time pressing ENTER after each value. The up and down arrow keys may be used to skip fields.
6. Press Next [F1] to move to the next step.

7. Repeat steps 5 and 6 until the test sequence is complete.
8. When all steps have been entered, press PREV to return to the Named programs screen.

Automatically Generating a Program

In order for the Calibrator to automatically generate a program the user must input the first set-point pressure, the last set-point pressure, and the number of steps in between, as well as the dwell time, max time and tolerance common to all setpoints.

1. Insure that the units, limits, and control parameters are their desired values.
2. The program is entered from the Program menu. From the Main Menu (press PREV until the Main Menu appears) press Menu [F6] | Program [F4].
3. Use the arrow keys to highlight New. If these steps are used on an existing program, all program steps will be deleted and replaced with the automatically generated program.
4. Press Edit [F4]. Since new was highlighted the Calibrator will create a new program and give a default name of NAMEnn where nn is a two digit number. The Program Editing screen will appear, displaying the first step.
5. Press Auto [F3].
6. Using the numeric keypad enter the values for Start, Stop, Tolerance, Dwell time, Max time, Points up, and Points down pressing ENTER after each value. The up and down arrow keys may be used to skip fields.
7. Press Program [F1]. The program will be generated and the display will show the first step.
8. Press PREV to return to the Named Programs screen.

Changing the Name of a Program

1. The name is changed from the Program menu. From the Main Menu (press PREV until the Main Menu appears) press Menu [F6] | Program [F4].
2. Use the arrow keys to highlight the current name.
3. Press Edit [F4]. The program editing screen will appear, displaying the first step.
4. Press Name [F6].
5. Use the arrow keys to highlight a character from the character set.
6. Press Add [F3] to add the character to the scratchpad.
7. To correct a mistake press Clear [F4] and return to step 5.
8. Repeat steps 5 and 6 until the name is complete.
9. Press Enter [F5] to store the contents of the scratchpad as the new name of the program.
10. Press PREV twice to return to the Named Programs screen.

Changing an Existing Program

Instructions for changing an existing sequence are given below. Both manually and automatically generated programs may be edited.

1. Programs are changed from the Program menu. From the Main Menu (press PREV until the Main Menu appears) press Menu [F6] | Program [F4].
2. Use the arrow keys to highlight the name of the program.

3. Press Edit [F4]. The program editing screen will appear, displaying the first step.
4. The Next [F1] and Prev [F2] keys may be used to move through the program. To go directly to a specific step use the Arrow keys to highlight go to step, use the numeric keypad to enter the step number and press ENTER.

Note

Next [F1] will actually display one step past the end of the program (Step 6 of 5). This is to allow adding a step to the end of a program. The step does not actually exist until ENTER is pressed.

5. To add a step to the program, first move to the step *after* the new step. For example, to insert a step between steps 3 and 4, move to step 4. Press Insert [F4].
6. To delete a step in the program, first move to the step to be deleted, then press Delete [F5].
7. To change a step in the program, move to the desired step. Use the up and down arrow keys to highlight the field to be changed. Use the numeric keypad to enter the new value. Press ENTER to save the value.
8. When all changes have been made, press PREV to return to the Named Programs screen.

Changing the Configuration Stored with a Program

1. Programs are configured from the Program Menu. From the Main Menu (press PREV until the Main Menu appears) press Menu [F6] | Program [F4].
2. Use the arrow keys to highlight the name of the program.
3. Press Config [F3]. The configuration screen will appear.
4. Press Recall [F2]. The Calibrator will be set to the configuration stored with the program.
5. Press Prev until the Main Menu appears.
6. Change the desired parameters using the normal procedures.
7. Return to the Main Menu by pressing PREV until it appears.
8. Press Menu [F6] | Program [F4].
9. Use the arrow keys to highlight the name of the program.
10. Press Config [F3] | Save [F1]. The changed configuration of the Calibrator is stored in the program's configuration.

Running a Program

1. Programs are run from the Program menu. From the Main Menu (press PREV until the Main Menu appears) press Menu [F6] | Program [F4].
2. Use the arrow keys to highlight the name of the program.
3. Press Run [F1]. The program run screen will appear. Stop will be highlighted showing that the program is not currently running.
4. Press Run [F2]. The configuration of the Calibrator stored with the program is restored, the pressure set-point is set to the pressure value in the first step and Calibrator is placed in Control mode. Run will now be highlighted and the program will proceed through its steps.

5. To pause the program press Pause [F3]. Pause will now be highlighted and the Calibrator will continue controlling to the current setpoint. Press Cont [F4] to resume the program.
6. To stop the program press Stop [F5]. The program will stop running but the Calibrator will continue controlling to the current setpoint.

Configuration

Test Access Code

The test access code allows the user to protect access to Calibrator configuration and programs. Once set the test access code is required before the user is allowed to change the limits, control parameters or programs. Setting the test access code to zero disables the limited access.

1. The test access code is set from the Limits menu. From the Main Menu (press PREV until the Main Menu appears) press Menu [F6] | Setup [F2] | Limits [F1].
2. Use the up and down arrow keys to highlight Access.
3. Use the numeric keypad to enter the new access code. Press ENTER.
4. Press Yes [F4] to acknowledge changing the access code.

Bargraph Maximum

The bargraph on the Main Menu screen can be scaled to match the device under test by setting the full scale value of the bargraph.

1. The bargraph maximum is set from the Setup User Menu. From the Main Menu (press PREV until the Main Menu appears) press Menu [F6] | Setup [F2] | User [F2].
2. Use the up and down arrow keys to highlight Bargraph Max.
3. Use the numeric keypad to enter the bargraph maximum value in the current pressure units.
4. Press ENTER.

Key Click

The Calibrator can be configured to click each time a key is pressed.

1. The Key Click is set from the Setup User Menu. From the Main Menu (press PREV until the Main Menu appears) press Menu [F6] | Setup [F2] | User [F2].
2. Use the up and down arrow keys to highlight Key click.
3. Use the left and right arrow keys to select on or off.

Date/Time

The Calibrator's system clock is continuously updated, even through power off and on.

1. The Date and Time are set from the Setup System menu. From the Main Menu (press PREV until the Main Menu appears) press Menu [F6] | Setup [F2] | System [F5].
2. To set the system date press Date [F1]. Use the numeric keypad to enter the current month, date, and four-digit year. All digits must be entered. Press ENTER to accept.
3. To set the system time press Time [F2]. Use the numeric keypad to enter the current hour, minute, and second. All digits must be entered. Press ENTER to accept.

Chapter 5

Remote Operation

Remote Operation

The Calibrator can be operated remotely by a computer. Two standard interfaces are supported: IEEE-488, and RS-232. Both interfaces support SCPI (Standard Commands for Programmable Instruments). The IEEE-488 interface additionally supports emulation of a RUSKA Single Channel Interface Panel (Models 6005-701 and 6005-761). The IEEE-488 interface conforms to the following standards.

ANSI/IEEE Std 488.1-1987	IEEE Standard Digital Interface for Programmable Instrumentation
ANSI/IEEE Std 488.2-1987	IEEE Standard Codes, Formats, Protocols, and Common Commands
SCPI 1991.0	Standard Commands for Programmable Instruments

Capabilities

IEEE-488

The following identification codes define the interface capabilities of the Calibrator. Their meaning is described in the IEEE-488 standard.

SH1	Source Handshake, Complete Capability
AH1	Acceptor Handshake, Complete Capability
T5	Talker
L3	Listener
SR1	Service Request, Complete Capability
RL1	Remote-Local, Complete Capability
PP0	Parallel Poll, No Capability
DC1	Device Clear, Complete Capability
DT0	Device Trigger, No Capability
C0	Controller, No Capability

The optional IEEE-488 interface is installed next to the processor board. The interface is identified by the IEEE-488 standard connector on the back panel of the unit.

Note

Do not change any jumpers or switch settings on the IEEE-488 interface board. The IEEE-488 address is set by the MENU | SETUP | REMOTE screen.

RS-232

The RS232 interface supports standard serial operation from a computer to a single Calibrator. RS232 supports the IEEE-488.2 and SCPI commands. The Calibrator allows the following port setups.

Baud Rate: 1200, 2400, 9600, or 19200
Data Bits: 7 or 8
Parity: Even, Odd, or None
Stop Bits 1 or 2
Handshaking XON/XOFF

The RS-232 connection is a DB-9P connector found on the back panel of the Calibrator. The following pins are used, all other pins are reserved.

Table 5-1. RS-232 Pin Allocations

Pin #	Direction	Signal	
2	In	RXD	Receive Data
3	Out	TXD	Transmit Data
5	---	GND	Ground
7	Out	RTS	Request to Send

Remote/Local Operation

In Local mode, the Calibrator is operated manually through the front panel. Chapter 4, Local Operation, covers local operation. The Calibrator always powers up in the local mode. In remote mode, the Calibrator is operated by a computer connected to an interface. Most functions that can be performed in local mode can also be performed remotely.

Remote mode does not automatically disable local operation. The remote interface may be active while local operations are being done. In cases where full remote control is required the following methods may be used.

1. Issue a Local Lockout (LLO) interface message via the IEEE-488 interface. The Calibrator will disable the local keyboard until the Go To Local (GTL) interface message is received or the REN (Remote Enable) line is unasserted. This method cannot be used on the serial interfaces.
2. Issue the SCPI command "SYSTEM:KLOCK ON" to lock the local keyboard. The Calibrator will disable the local keyboard until the command "SYSTEM:KLOCK OFF" is received.
3. Issue the SCPI command "DISPLAY:ENABLE OFF" or "DISPLAY:TEXT <string>". These commands will disable the local display in addition to locking the keyboard. The command "DISPLAY:ENABLE ON" will restore the local display and keyboard operation.

Local operation may also be restored by powering the Calibrator off and back on.

Configuration

The remote interface is configured using the local interface before the remote is connected. The parameters needed varies with the interface used.

IEEE-488	Address, Protocol
RS-232	Baud Rate, Data Bits, Parity, Stop Bits

To configure the remote interface follow these steps:

1. The remote interface is configured from the Setup Remote Menu. From the Main Menu (press PREV until the Main Menu appears) press Menu [F6] | Setup [F2] | Remote [F4].
2. Use the up and down arrow keys to highlight the desired parameter.
3. Use the numeric keypad to enter the address, use the Left and Right arrow keys to change the other parameters. The ENTER key must be pressed after entering the address.
4. Repeat steps 2 and 3 to set all parameters needed.

Device Messages

SCPI Command Format

SCPI mnemonics have two forms: long and short. The short form is all in capital letters. The long form is the entire mnemonic. Commands may use either the short form or the entire long form. No other forms are accepted. SCPI ignores case, uppercase and lowercase are equivalent.

A SCPI command is made by following the command tree as presented in the command summary. Each level adds a mnemonic to the command separated by colons. Mnemonics enclosed in square brackets are optional and may be omitted.

Some mnemonics are followed by an optional numeric suffix. If omitted the suffix defaults to 1.

Multiple commands may be placed in a single message separated by semi-colons. Each command starts at the same level of tree where the last command stopped unless the command starts with a colon. The first command in a message and any commands starting with a colon start of the root of the command tree. IEEE 488.2 commands may occur between SCPI commands without affecting the tree level.

Command parameters are separated from the command name by 1 or more spaces. Multiple parameters are separated by commas. SCPI accepts numeric parameters with optional sign, decimal point, and exponent. OFF is equivalent to zero and ON is equivalent to one. Floating point numbers are rounded to the nearest integer for commands accepting integer values only.

A message is terminated by a Line Feed (hexadecimal 0A). Carriage Returns, Tabs, and other control characters are ignored.

SCPI Response Format

Only commands ending in a question mark have responses. Multiple values from a single command are separated by commas. Responses from different commands in the same message are separated by semi-colons. The response message is terminated by a Line Feed (hexadecimal 0A).

Integer responses are returned as 1 or more digits. Boolean values (ON and OFF values) are always returned as numbers with zero for OFF and one for ON. Floating point values are returned in the format “+d.dddddddE+dd”.

ANSI/IEEE 488.2-1987 Command Summary

*CLS	Clear Status
*ESE?	Event Status Enable Query
*ESE <number>	Event Status Enable
*ESR?	Event Status Register
*IDN?	Identification
*OPC?	Operation Complete Query (Returns 1)
*OPC	Operation Complete
*RST	Reset
*SRE?	Service Request Enable Query
*SRE <number>	Service Request Enable
*STB?	Status Byte Query
*TST?	Self-Test Query
*WAI	Wait (No operation)

SCPI Command Summary

The current value associated with a SCPI command may be read by appending a question mark to the command. For example CALC:LIM:UPP? will return the current upper pressure limit.

MEASure		
[:PRESSure]?		returns current pressure reading
:PRESSure2?		return pump pressure
:POSITION?		returns pump position (%)
CALCulate		
:LIMit		
:LOWer <number>		get/set low pressure limit
:SLEW <number>		get/set slew rate limit
:UPPer <number>		get/set high pressure limit
:VENT <number>		get/set auto-vent limit
:TARE		
:VALue <number>		get/set tare value
:STATe ON/OFF		set tare using current pressure
CALibration		
[:PRESSure]		
:DATA		
:POINTs?		read number of calibration constants
:VALue<n>?		read label, calibration constant
:CALibration		
:POINTs?		read number of calibration points
:VALue<n>?		read nominal calibration point
:VALue<n> <number>		perform calibration point
:ZERO		performs zero calibration
:VALUE <number>		sets vacuum value
:INITiate		enter zero calibration mode
:INITiate?		returns status for cal, press, temp, ref
:RUN		start zero calibration
:STOP		abort zero calibration
:PRESSure2		
:DATA <number>, <number>		sets C0, C1 for pump pressure
:VALue <number>		sets first calibration point
:VALue2 <number>		sets second calibration point
:POSITION		
:DATA <number>, <number>		sets C0, C1 position
:DATA?		reads C0, C1
:VALue <number>		sets second calibration point
:MODE?		calibration edit enabled?
:MODE ON OFF 1 0		enable calibration edit (Cal. button required)
DISP		
:ENABLE ON OFF 1 0		turns front panel display on/off
:TEXT <string>		displays message on front panel
:BGGraph <number>		sets bar graph maximum
OUTPut		
:STATe ON OFF 1 0		off=MEASure, on=CONTROL
:STATe?		returns 0=Measure or 1=Control

:MODE MEASure CONTrol VENT	sets mode
:MODE?	returns mode string
PROGRAM	
:CATalog?	returns list of defined programs
[SElected]	
:DEFine <program block>	Define program press1, toler1, dwell1, max1, press2, toler2, read program definition
:DEFine?	read program definition
:DELete	
[:SElected]	deletes current program
:ALL	deletes all programs
:NAME <program name>	select current program
:STATe RUN PAUSE STOP CONTinue	set program state
:STATe?	read program state
:CONFigure	
:RECall	restore saved configuration
:SAVE	save current configuration
SENSE	
[:PRESSure]	
[:RESolution] <number>	set pressure display resolution
:AUTO <boolean> ONCE	return to default resolution
:MODE?	returns ABSOLUTE or TARE
:RANGE	
[:UPPer]<number>	set triple range (full scale in
current units)	
:LOWer?	returns 0
:REference	
[:HEIGHt] <number>	set head height
:SGRavity <numbers>	set specific gravity
[SOURCE]	
[:PRESSure]	
[:LEVel]	
[:IMMediate]	
[:AMPLitude] <number>	sets pressure setpoint
[:AMPLitude]?	read pressure setpoint
:MODE FIXEd LIST	set source parameter set
:TOLerance <number>	specifies output tolerance
:SLEW <number>	set slew rate
:CONTrOl <number>	set control band
:MODE CYCLE FAST NORMAl	set control mode
:LIST	
:PRESSure <number> [, <number>]	set list of pressure values
:POINts?	returns number of points defined
:DWELl <number> [, <number>]	specifies dwell times
:POINts?	returns number of dwell times
:TOLerance <number> [, <number>]	specifies tolerances
:POINts?	returns number of tolerances
:DIRection UP DOWN	direction to go through list
:COUNt <number>	number of times to go through list
STATus	
:OPERation	
[:EVENT]?	read/clear operation event register
:CONDition?	read operation condition register
:ENABle <number>	set operation enable mask
:QUEStionable	
[:EVENT]?	read/clear questionable event register
:CONDition?	read questionable condition register
:ENABle <number>	set questionable enable mask
:PRESet	reset condition flags
SYSTEM	
:DATE <year>, <month>, <day>	set system date
:ERRor?	returns <error#, "descr;info"> or 0, "No Error"
:KLOCK ON OFF 1 0	lock keyboard
:TIME <hour>, <minute>, <second>	set system time
:VERsion?	returns 1991.0
:LANGUage "6000" "SCPI"	set interface protocol to 6000 or SCPI
:PRESet	reset system
TEST	
:ELEctronic?	perform electronic self-test
UNIT	

:DEFine<n> <name>,<number>	define a unit
:LENGth MM IN	set length units for head height
[:PRESSure] <unit name>	set pressure units

Example SCPI Commands

To request the current pressure reading all of the following commands are equivalent:

```
:MEASURE:PRESSURE?  
  
:measure:pressure?  
:MeAsUrE:pReSsUrE?  
:meas:pres?  
:measure?  
:meas?  
MEAS?
```

To set the control pressure set-point to 50 all of the following commands are equivalent:

```
SOURCE:PRESSURE:LEVEL:IMMEDIATE:AMPLITUDE 50  
SOUR:PRES:LEV:IMM:AMPL 50.0  
PRESSURE +50  
PRES 50
```

SCPI Status Registers

Status Byte Register (STB), Service Request Enable Register (SRE)

- Bit 7 Operation Stus Summary. Set when an event enabled in OPER:ENABLE occurs.
- Bit 5 EBS - Event status bit. Set when an event enabled in ESE occurs.
- Bit 4 MAV - Message Available. Set when a response is ready to be sent.
- Bit 3 Questionable Status Summary. Set when an event enabled in QUES:ENABLE occurs.
- Bit 2 Error/Event Queue Not Empty.
- Bit 1 Always 0.
- Bit 0 Always 0.

Standard Event Status Register (ESR), Standard Event Status Enable Register (ESE)

- Bit 7 Power-on. set at power-up.
- Bit 6 User request. Always 0.
- Bit 5 Command Error. Error in command syntax.
- Bit 4 Execution Error. Error in command execution.
- Bit 3 Device Dependent Error. Device error independent of commands.
- Bit 2 Query Error. Output queue empty when request received.
- Bit 1 Request Control. Always 0.
- Bit 0 Operation Complete. Set for *OPC command.

Operation Status (OPER:EVENT, OPER:CONDITION, OPER:ENABLE)

- Bit 0 Calibrating. Currently performing a calibration.
- Bit 1 Settling. Waiting for control to stabilize.
- Bit 2 Ranging. Pressure reading is from High Speed (Low Accuracy) Sensor.
- Bit 3 Sweeping. Always 0.
- Bit 4 Measuring. The instrument is actively measuring. Always 1.
- Bit 5 Waiting for Trigger. Always 0.
- Bit 7 Correcting. Currently performing a correction. Always 0.
- Bit 8 Self-test in progress.
- Bit 9 Always 0.
- Bit 10 Always 0.
- Bit 11 Always 0.
- Bit 12 Always 0.
- Bit 13 Instrument Summary bit. Always 0.

Bit 14 Program Running.
Bit 15 0.

Questionable Status (QUES:EVENT, QUES:CONDITION, QUES:ENABLE)

Bit 0 Voltage is questionable. Set when supply voltages are not within 5%.
Bit 1 Current is questionable. Always 0.
Bit 2 Time is questionable. Set when the clock has not been set.
Bit 3. Temperature is questionable. Set when the oven temperature is not within range.
Bit 5. Phase is questionable. Always 0.
Bit 6 Modulation is questionable. Always 0.
Bit 7 Calibration is questionable. Set when the unit has not been calibrated.
Bit 8 Pressure is questionable. Set when the pressure is overranged.
Bit 9 Always 0.
Bit 10 Always 0.
Bit 11 Always 0.
Bit 12 Always 0.
Bit 13 Instrument Summary bit. Always 0.
Bit 14 Command Warning. Set whenever a command ignores a parameter.
Bit 15 0

Interface Panel Emulation

The 7000 may be configured to emulate the IEEE 488 command set of the RUSKA Single Channel Interface Panel (Models 6005-701 and 6005-761). See the Interface Panel manual for a description of the protocol. The 7000 emulation has the following differences:

1. The DPG is always in Remote mode (Byte 0, Bit 2)
2. All TI strip outputs read as OFF (zero) and must be written as OFF.
3. No special functions are implemented.
4. Any message written to the 7000 which starts with a colon as the first character is interpreted as a SCPI command.

To change from SCPI to Interface Panel Emulation via the remote interface send the following message:

```
:SYSTem:LANGuage "6000"
```

To change from Interface Panel Emulation to SCPI via the remote interface send the following message:

```
:SYSTem:LANGuage "SCPI"
```

Serial Operation

The RS-232 ports accept the same SCPI commands as the IEEE-488 port. The commands can be terminated by a carriage return (hexadecimal 0D) or a line feed (hexadecimal 0A). The responses are always terminated by a carriage return followed by a line feed.

The serial ports also support XON/XOFF. When the XOFF (hexadecimal 13) command is received the Calibrator will stop transmitting. Transmission is restarted when the XON (hexadecimal 11) command is received.

When only one unit is attached, the Control-C (hexadecimal 03) command will clear the transmit and receive buffers and disable addressing. When addressing is disabled the unit will respond to commands without being addressed.

Chapter 6

Maintenance

Introduction

Very little maintenance is normally required for the Calibrator. The following sections discuss some of the suggested procedures.

Observing the Calibrator's Full Scale Rating

Instructions for observing the Calibrator's full scale rating are given below.

1. If necessary, press PREV several times to return the display to the Main screen.
2. Select MENU/CAL. The Calibrator's full scale pressure rating (FS:) will appear on the screen, in the current units of measure.
3. Press PREV to return to the previous screen.

Observing the Software Version Number

Follow the steps below to observe the Calibrator's software version number.

1. If necessary, press PREV several times to return the display to the Main screen.
2. Select MENU/SETUP/SYSTEM. The software version number will appear on the screen.
3. Press PREV to return to the previous screen.

Preventive Maintenance

Although the Calibrator is designed to be nearly maintenance free, occasional preventive maintenance is required to keep the Calibrator's performance optimal.

Initiating the Calibrator's Self Test

To test the Calibrator's hardware, software, and pneumatics, follow the steps below.

1. If necessary, press PREV several times to return the display to the main screen.
2. Select MENU/TEST/SELF. The electronics self test will run and display the results.
3. Press Pneu to run the pneumatic test.
4. Press PREV to return to the previous screen.

Removing the Calibrator's Cover

The Calibrator should be kept clean and completely assembled at all times. Operating the Calibrator without its cover affects the Calibrator's thermal gradients and therefore reduces accuracy. If it becomes necessary to remove the Calibrator's cover, follow the instructions below.

⚠⚠ Warning

The Calibrator should only be opened by qualified electrical/mechanical service technicians. Lethal voltages are present and exposed in the power supply and display.

1. Turn off the Calibrator and disconnect the power cord from the power supply.
2. Locate the screws that secure the cover.
3. Unscrew these screws and remove the cover.
4. Replace the cover before resuming operation.

Processor Battery

The processor board uses a lithium battery to maintain time and date information. This battery has a varying life. If the instrument is left on 24 hours a day it will last 5-10 years. If the instrument is stored, it will last one year. It is recommended to replace it every year. To do this, follow the instructions below:

1. Remove cover, see section above, Chapter 6, Preventative Maintenance, Removing the Calibrator's Cover.
2. Remove processor card by removing one screw and rocking upward.
3. Remove battery, a round silver object, by carefully pulling on battery while holding card.
4. Plug in new battery (part number 4-725).
5. Reassemble in reverse order.
6. The time and date may have to be re-entered. See Chapter 4, Configuration, Time/Date.

Calibration

To keep the Calibrator operating within its specified accuracy (Appendix A), the calibration procedure described below must be performed. Use appropriate DWG, such as RUSKA 2485.

Note

The calibration procedure automatically generates coefficients which are stored in memory on the Calibrator's Control Board (Chapter 2). If these constants are "lost" for any reason, the calibration procedure must be performed, regardless of the last calibration date. If the calibration coefficients are known, they may be restored to the Calibrator at any time by "editing the coefficients" (Chapter 6, Subsection under Storing the Coefficients, Editing the Calibration Coefficients).

Calibration Instructions—Single and Dual Sensor

To calibrate the RUSKA 7615, the user simply connects a calibration standard to the RUSKA 7615's Test Port then follows the 4-step calibration procedure on the Calibrator's display. On dual sensor versions, the operator would be instructed to select one of the two sensors to be calibrated. The calibration procedure is a menu driven procedure that steps the user through the pressures that are required to calibrate each pressure range that is included in the Calibrator. The user generates the defined pressures utilizing an adequate standard to calibrate the RUSKA 7615. The pressure steps will vary based on the pressure range and number of sub ranges that are included with the Calibrator. Typically, for a single range instrument, the operator would be prompted to generate Atmosphere, 50%, 100%, and 50% of the Calibrator's full scale operating range of a sensor (See Chapter 6, Observing the Calibrator's Full Scale Rating). No disassembly is required and there are no potentiometers to tune.

Note

The uncertainty of the final calibration must include the uncertainty of the standard being used.

Preparation

- Verify that the calibration standard is connected to the Test Port.
- Verify that the Calibrator has been at stable operating temperature for at least two hours.
- Verify that the Calibrator is in Measure mode (Chapter 4).
- Verify that the head height is set to 0.
- If desired, change the Calibrator's units of measure (Chapter 4) to match those of the calibration standard
- To go to the calibration screen, select MENU/CAL.
- Verify that the air supply is connected and set to 90-110 psi.

To begin the calibration process, press the recessed CAL button beneath the vacuum fluorescent display. If the Calibration access code is enabled, enter it at the prompt. The Calibration, step 1, screen will appear.

Note

To exit the calibration procedure before the calibration coefficients have been changed, press CANCEL any time during the procedure.

Step 1

1. To begin Step 1 of the calibration process, select ZERO. Enter the actual pressure applied and press OK. Since the 7615 have absolute pressure sensors, it is common to zero the 7615 at the current barometric pressure.
2. Wait until the zero procedure completes. This may take several minutes. When the 7615 completes Step 1, the Calibration, step 2, screen will appear.

Step 2

1. To begin Step 2, use the calibration standard to *Apply* the mid-point pressure of the range of the sensor being calibrated requested by the 7615. As pressure is admitted into the Test Port, the *Measured pressure* on the 7615's screen will change accordingly.

2. When the Measured pressure stabilizes, use the 7615's numeric keypad and OK to enter the actual pressure applied by the calibration standard. *Do not enter the Measured pressure reported by the Calibrator.* If necessary, use the CLEAR key to correct a mistake in the edit field. If the actual pressure applied is acceptable, the Calibration, Step 3, screen will appear.

Note

If the actual pressure is outside of the tolerance for the requested mid-point pressure, Error—222 Data out of range will occur. Acknowledge this error by selecting OK, then re-enter the actual pressure, repeating Step 2, number 1, if necessary.

Step 3

1. To begin Step 3, use the calibration standard to Apply the high-point pressure of the range of the sensor being calibrated requested by the 7615. As pressure is admitted into the Test Port, the Measured pressure on the Calibrator's screen will change accordingly.
2. When the Measured pressure stabilizes, use the Calibrator's numeric keypad and OK to enter the actual pressure reported by the calibration standard. *Do not enter the Measured pressure reported by the Calibrator.* If necessary, use the Clear key to correct a mistake in the edit field. If the actual pressure applied is acceptable, the Calibration, Step 4, screen will appear.

Note

If the actual pressure applied is outside of the tolerance for the requested high-point pressure, Error—222 Data out of range will occur. Acknowledge this error by selecting OK, then re-enter the actual pressure, repeating Step 3, number 1, if necessary.

Step 4

1. To begin Step 4, use the calibration standard to again **Apply** the mid-point pressure of the range of the sensor being calibrated requested by the Calibrator. As pressure is admitted into the Test Port, the **Measured pressure** on the Calibrator's screen will change accordingly.
2. When the Measured pressure stabilizes, use the Calibrator's numeric keypad and **OK** to enter the **actual pressure** reported by the calibration standard. *Do not enter the Measured pressure reported by the Calibrator.* If necessary, use the **CLEAR** key to correct a mistake in the edit field. If the **actual pressure applied** is acceptable, the **Calibration complete** screen will appear.

Storing the Coefficients

Note

In addition to saving the calibration coefficients to the Calibrator's memory, the user is advised to separately record the calibration coefficients and store this "backup" in a safe place.

Step 5

Calibration is complete. To exit the calibration procedure without storing the calibration coefficients in memory, press **Cancel**. To store the calibration coefficients, select **OK**.

Step 6

Press **Prev** to return to the main screen.

Once the calibration procedure is complete, the user is advised to record several pressure readings. If there are any significant errors at these points, then an error was probably made in generating one of the calibration pressures, and the calibration procedure should be repeated.

Calibration Instructions—Multi-Ranged Sensor

To calibrate the RUSKA 7615, the user simply connects a calibration standard to the Calibrator's Test Port then follows the 4-step calibration procedure on the Calibrator's display. Optional pressure ranges are available with the 7615 provided up to six ranges in a single instrument. Each independent range would be calibrated as a separate pressure range.

On multi-ranged sensor versions of the 7615, when activating the calibration procedure, after completing zero, the operator is instructed to select one of the multiple available pressure ranges that the operator wished to calibrate. The operator then has the option to define the number of calibration points that they wish to set in an up scale and a downscale direction. The menu driven calibration procedure then steps the user through the pressures that are required to calibrate the selected pressure range. The user generates the defined pressures utilizing an adequate standard to calibrate the 7615. The pressure steps will vary based on the number of points the operator enters into the 7615. Typically, it is recommended that the operator select a 3 point up and a 3 point down calibration adjustment procedure. This would prompt the operator to generate Atmosphere, 50%, 100%, and the 50% of full scale of the range being calibrated (See Chapter 6, Observing the Calibrator's Full Scale Rating). Following the actual adjustment to the sensor, it is recommended to perform a number of verification points to assure that the instrument was adjusted properly.

Note

The uncertainty of the final calibration must include the uncertainty of the standard being used.

Preparation

- Verify that the calibration standard is connected to the Test Port.
- Verify that the Calibrator has been at stable operating temperature for at least two hours
- Verify that the Calibrator is in Measure mode (Chapter 4).
- Verify that the head height is set to 0.
- If desired, change the Calibrator's units of measure (Chapter 4) to match those of the calibration standard
- To go to the calibration screen, select **MENU/CAL**.
- Connect air supply

To begin the calibration process, press the recessed CAL button beneath the vacuum fluorescent display. If the Calibration access code is enabled, enter it at the prompt. The Calibration, step 1, screen will appear. The operator will select the sub-range of the sensor to be calibrated following the zeroing process.

Note

To exit the calibration procedure before the calibration coefficients have been changed, press CANCEL any time during the procedure.

Step 1

1. To begin Step 1 of the calibration process, select **ZERO**. Enter the actual pressure applied and press **ok**.
 - a. Wait until the zero procedure completes. This may take several minutes. When the Calibrator completes Step 1, the Calibrator will request which sub-range of the triple range sensor is to be calibrated. Use the arrow keys to highlight the desired range and hit OK.
 - b. The system will then prompt the operator to enter the number of points that should be included in the calibration. Typically, it is recommended to select 3 points up and 3 points down. This will generate a calibration procedure that includes atmosphere, 50%, 100% in the increasing direction and then 50% and atmosphere in the decreasing direction for the sub-range of the sensor being calibrated. When the Calibrator completes Step 1, the Calibration, Step 2, screen will appear.

Step 2

Note

The number of steps noted in this example is based on the operator selecting a 3 points up and 3 points down procedure. If a higher or lower number of points is specified by the operator, the actual pressures that the 7615 calculates will vary to reflect these changes.

1. To begin Step 2, use the calibration standard to **Apply** the mid-point pressure of the sub-range of the sensor being calibrated requested by the Calibrator. As pressure is admitted into the Test Port, the **Measured pressure** on the Calibrator's screen will change accordingly.
2. When the Measured pressure stabilizes, use the Calibrator's numeric keypad and OK to enter the actual pressure applied by the calibration standard. *Do not enter the Measured pressure reported by the Calibrator.* If necessary, use the **CLEAR** key to correct a mistake in the edit field. If the **actual pressure applied** is acceptable, the Calibration, step 3, screen will appear.

Note

*If the actual pressure applied is outside of the tolerance for the requested high-point pressure, Error — 222 Data out of range will occur. Acknowledge this error by selecting **OK**, then re-enter the **actual pressure**, repeating Step 3, number 1, if necessary*

Step 3

1. To begin Step 3, use the calibration standard to **Apply** the high-point pressure of the sub-range of the sensor being calibrated requested by the Calibrator. As pressure is admitted into the Test Port, the **Measured pressure** on the Calibrator's screen will change accordingly.
2. When the Measured pressure stabilizes, use the Calibrator's numeric keypad and **OK** to enter the **actual pressure** reported by the calibration standard. *Do not enter the Measured pressure reported by the Calibrator.* If necessary, use the **CLEAR** key to correct a mistake in the edit field. If the **actual pressure applied** is acceptable, the Calibration, Step 4, screen will appear.

Note

If the **actual pressure applied** is outside of the tolerance for the requested high-point pressure, Error—222 Data out of range will occur. Acknowledge this error by selecting **OK**, then re-enter the actual pressure, repeating Step 3, number 1, if necessary

Step 4

1. To begin Step 4, use the calibration standard to again **Apply** the mid-point pressure of the range of the sensor being calibrated requested by the Calibrator. As pressure is admitted into the Test Port, the **Measured pressure** on the Calibrator's screen will change accordingly.
2. When the Measured pressure stabilizes, use the Calibrator's numeric keypad and **OK** to enter the **actual pressure** reported by the calibration standard. *Do not enter the Measured pressure reported by the Calibrator.* If necessary, use the **CLEAR** key to correct a mistake in the edit field. If the **actual pressure applied** is acceptable, the **Calibration Complete** screen will appear.

Storing the Coefficients*Note*

In addition to saving the calibration coefficients to the Calibrator's memory, the user is advised to separately record the calibration coefficients and store this "backup" in a safe place.

Step 5

Calibration is complete. To exit the calibration procedure without storing the calibration coefficients in memory, press **CANCEL**. To store the calibration coefficients in memory, select **OK**.

Step 6

Press **PREV** to return to the main screen.

Once the calibration procedure is complete, the user is advised to record several pressure readings. If there are any significant errors at these points, then an error was probably made in generating one of the calibration pressures, and the calibration procedure should be repeated.

Editing the Calibration Coefficients

If the Calibrator's memory is erased but the calibration coefficients are known, the user can restore the coefficients to the Calibrator by following the directions below.

⚠ Caution

Never randomly adjust the calibration coefficients. Only qualified personnel with valid backup data should be allowed to edit the coefficients. If the backup coefficients are questionable, perform the calibration procedure in its entirety.

1. Verify that the Calibrator is in **Measure** mode (Chapter 4).
2. To go to the **Calibration** screen, select **MENU/CAL**.
3. To edit the calibration coefficients, press the recessed **CAL** button beneath the vacuum fluorescent display. If the calibration access code is enabled, enter it at the prompt. The **Calibration, Step 1**, screen will appear.

Note

*To exit the calibration procedure before the calibration coefficients have been changed, press **CANCEL** any time during the procedure.*

4. Select the range to be edited.
5. Use the arrow keys to highlight the coefficient to be edited.
6. Use the numeric keypad and ENTER key to enter a new value. To correct a mistake in the edit field, use the CLEAR key.
7. Repeat steps 4 and 5 until all four coefficients are correct.

Note

In addition to saving the calibration coefficients to the Calibrator's memory, the user is advised to separately record the calibration coefficients and store this "backup" in a safe place.

8. To exit the editing procedure without storing the calibration coefficients in memory, press **CANCEL**. To store the calibration coefficients in memory, select **OK**.
9. Press **PREV** to return to the main screen.

Once the calibration coefficients are input, the user is advised to record several pressure readings. If there are any significant errors at these points, then the calibration procedure should be performed.

Zeroing

The zero procedure may be performed by itself without requiring a full calibration.

- Verify that the Calibrator's test port is open to atmosphere.
- Verify that the Calibrator has been at stable operating temperature for at least two hours.
- Verify that the Calibrator is in MEASURE mode.

Step 1

Enter the calibration screen by selecting **MENU/CAL**.

Step 2

Select ZERO. The recessed **CAL** button should *not* be pressed. If the **CAL** button is pressed, a full calibration will be selected.

Step 3

Use the numeric keypad to enter the pressure at the test point. It is acceptable to zero the unit at the current atmospheric pressure by entering the current barometric pressure as the zero reading. Press **OK** when the measured pressure is stable.

Note

Be sure that you have accounted for any hydraulic "head" pressure that may exist in the system between the reference plane of the system and the actual height of the fluid head where it is opened to atmosphere.

Step 4

Wait until the zero procedure completes. This may take several minutes. When the Calibrator completes, it will return to the CAL screen.

Cleaning

When necessary, clean externally using a damp lint-free cloth and mild liquid detergent.

Preparation for Storage & Shipment

Disconnecting the Calibrator

⚠ Caution

The procedures given in this Chapter must be strictly adhered to in order to prevent damage to the instrument. Failure to follow these procedures will likely result in damage to the Calibrator during shipment. This damage is not covered by the carrier's insurance.

1. Relieve all hydraulic pneumatic pressure from the RUSKA 7615.
2. Turn the 7615 power switch off.
3. Disconnect the power cable from the RUSKA 7615's power receptacle.
4. Disconnect all pneumatic lines and fittings from the 7615 's back panel.
5. Plug all ports.

Packing Instructions

The instructions below must be strictly followed in order to prevent damage to the instrument.

The main principle behind a successful shipment is that of minimizing shocks. This is accomplished by cradling the device within two boxes such that the RUSKA 7615 is restrained but still has resilience. The two most successful materials for this purpose are rubber foam and flexible polyurethane foams.

⚠ Caution

Styrofoam, poured "foam in place" mixtures, and other rigid foams are *not* suitable.

Even polyfoam or rubber foam should be cut into strips so that it will not present a large rigid surface to the Calibrator.

Fluke has found that corrugated cardboard boxes provide the best packing. The boxes sometimes arrive damaged, but the contents are usually intact. A minimum of 3 inches of foam with at least an N95 impact rating should separate the inner surface of the inner box and any portion of the Calibrator. The same is true for the inner and outer box.

⚠ Caution

Wood or metal boxes do not absorb shock when dropped and; therefore, are not recommended.

If the original packaging and shipping materials have been retained, use them for packing the Calibrator. If the Calibrator is being packed for long-term storage (more than 30 days), place a desiccant bag inside the box. In general, prepare the Calibrator for shipment as follows:

1. Fluke Calibration has an RMA procedure in place. Please contact the Customer Service Center to obtain an RMA number prior to returning any equipment to Fluke. Have the following information available when contacting Fluke:

- the part number,
- the serial number,
- the purchase order number,
- the billing and ship to address, and
- the buyer's name and telephone number.

This information plus the RMA number must be attached to the unit when it is shipped to Fluke Calibration. There will be a minimal charge for inspection and/or evaluation of returned goods.

2. Enclose the Calibrator in plastic or any good water barrier material. Anti-static material is advisable.
3. Interior Carton (size 31 x 22 x 19 inches): Cover bottom and sides with no less than 3" of polyfoam. Use four strips 4" to 6" wide and 50" to 60" long. Arrange strips to cross each other inside carton. Cover sides and top, completely filling entire carton. Tape carton closed.
4. The Exterior Crate 34 x 27 x 29 on pallet made of wood. Use four 3 x 3 x 84 inch strips of polyfoam crossing each other inside the carton. Place interior carton inside making sure exterior carton is completely filled. Do not close the carton yet.
5. Inside the exterior carton, include the following:
 - a. Statement of the problem or service needed. Be specific. Include the name and telephone number of a knowledgeable technician for consultation.
 - b. The part number, serial number, return address, and purchase order number.
 - c. Seal the carton, using gummed tape.
6. Address the carton to:

**FLUKE CALIBRATION
10311 WESTPARK DRIVE
HOUSTON, TX 77042**

7. Labels recommended are **THIS SIDE UP, HANDLE WITH CARE, DO NOT DROP, and FRAGILE.**

Shipping Instructions

Fluke recommends the use of air freight for transportation. Surface transportation subjects the shipment to more frequent handling and much more intense shock.

Again, it is essential that the procedures mentioned in this Chapter be strictly adhered to in order to prevent damage to the instrument.

Appendix A

Summary of Specifications

Accuracy

Specifications of pressure transducer instrumentation can be divided into three categories: Input Specifications, General Specifications, and Performance Specifications. Each of these categories in turn consists of parameters which are usually specified by minimum and/or maximum numeric limits. Almost all of these parameters can have an effect on what is generally referred to as the instrument's "accuracy." Therefore, the accuracy of pressure instrumentation can be varied either beneficially or detrimentally by controlling the Input Specifications, operating within the General Specifications, or knowing the actual Performance Specifications.

For example, if Input Specifications have not been met for the line voltage, the unit may not have a catastrophic failure, but errors may be present in the transducer measurement. As another example, if the requirement for the Pressure Source Flow Capacity has not been met, the DPC may not be able to achieve a final steady state controlled pressure within the settling time specification. Finally, if the DPC is commanded to a pressure outside of the Applicable Control Pressure Range, the nonlinearity in the pressure output may be greater than that specified.

Performance Specifications give the user the most flexibility and control over his "accuracy claims." The term accuracy is defined by ISA-S37.1 as either the ratio of the error to the full-scale output (%FS) or the ratio of the error to the reading (%RDG). Note that the definition of accuracy is not the summation of some or even all of the possible error source maximum limits.

The true accuracy of an instrument is relative to the actual error introduced by the calibration transfer standard plus the actual error not eliminated from the instrument's indicated output. Therefore, an instrument's accuracy can be manipulated by introducing more or less actual error through the choice of a calibration standard; or its accuracy can be varied by the elimination of actual errors inherent in the instrument. For example, if an instrument has a known error due to being used in an attitude, or tilt, the %FS zero shift error can be eliminated by re-zeroing the instrument in the tilted position. Even %RDG sensitivity shifts can be eliminated mathematically or by controlling the attitude of the instrument during its calibration.

The key to eliminating an error is knowing its source and type along with its polarity and magnitude. Generally, the source is simple to detect and is represented by the specific parameter. The type is usually a function of the instrument's design and manufacturing process. Within a given instrument, an error can be either random or systematic as well as random or systematic within the instrument's population. The user is free to consult Fluke for recommended methods of minimizing error source contributions.

In summation, total error can and should be managed by the control of the three general error sources: Input Specifications, which includes the user's chosen calibration standards; General Specifications, which includes the user's chosen processes; and Performance Specifications, which includes the user's chosen applications for the instrumentation. The parameters and value limits listed in the following specifications indicate the product line's general acceptance limits and are not a report of any unit's specific error contribution. Any parameter exceeding the specified limits should be considered in need of maintenance.

Specifications

Standard Pressure Ranges: 6K, 10K, 15K, 20K, 30K, 40K

Table A-1. Triple Scale Ranges psi (bar)

Full Scale	Low	Mid	High
6,000 (415)	2000 (140)	4000 (280)	6000 (415)
10,000 (700)	3000 (200)	6000 (400)	10,000 (700)
15,000 (1035)	5000 (300)	10,000 (600)	15,000 (1035)
20,000 (1400)	6000 (450)	12,000 (1000)	20,000 (1400)
30,000 (2070)	10,000 (700)	20,000 (1400)	30,000 (2070)
40,000 (2750)	12,000 (900)	25,000 (1800)	40,000 (2750)

Precision:	High Ranges to 20,000 psia: 0.01% FS of Active Range High Ranges >20,000 psia: 0.02% FS of Active Range
Stability:	High Ranges to 20,000 psia: 0.01% of Active Range/Year High Ranges >20,000 psia: 0.02% of Active Range/Year
Resolution:	0.01% FS or better
Control Stability:	Typically 0.01% FS for ranges less than 20K 0.02% FS for ranges greater than 20K
Control Range:	Increasing: Atm. to Full Scale Decreasing: Full Scale down to 400 psi, and vent to Atm.
Control Response:	Values are noted into a 50 cc air free volume and reflect the typical control speeds (or average time of multiple test points) for the system. Increased volume or air in the system will increase the control time. Decreasing volume will decrease the control times.
Normal Control Mode:	Time for 10% step size: 90 seconds Time to vent: < 5 seconds Pump Recycle time: 10 seconds

Cycle Control Mode:	Setup time to reach initial pressure <30 seconds Operating time to full pressure: <10 seconds (4 seconds typical) Operating time to Min pressure: <10 seconds (7 seconds typical) Time to complete one full cycle: <20 seconds (11 seconds typical)
Overpressure Protection:	Relief valves and rupture disk set at 110% FS Pressure port: Test port: Autoclave F250C Supply Port: 1/4 inch Female NPT
Display:	Graphical vacuum fluorescent
Pressure Medium:	Any non-corrosive fluid
Air Supply:	90–110 psi Dry Air (Dew Point , -10°C) Peak Flow Rate of 300 SCFH
Recommended Recalibration	
Interval:	1 Year
Communications:	Standard: RS-232C and IEEE-488 Syntax: SCPI (standard commands for programmable instruments)
Dimensions:	19"W x 30"D x 14"H (49 x 76 x 36 cm)
Weight:	150 lbs
Electrical Power:	115 VAC or 240 VAC, 50/60 HZ, single phase.
Humidity:	5 to 95% non-condensing
Temperature:	Operating: 5– 50 °C (40 to 122 °F) Storage: -20 to 70 °C (-4 to 158 °F)
Ingress Protection:	IP20, Indoor use, Altitude <2000m
EMC:	EN 61326
Electrical Safety:	EN 61010
Pressure Safety:	Pressure equipment directive 98/23/EC class Sound Engineering Practice (SEP)

Appendix B

Summary of Error Messages

Summary of Error Messages

Negative error numbers are from the Standard Commands for Programmable Instruments (Version 1991.0).

Table B-1. Error Messages

Value	Description and Corrective Action
0	No Error.
-103	Invalid Separator. Check punctuation in the SCPI command.
-104	Data Type. The type of parameter data is uncorrected. Check for numeric versus string data.
-109	Missing Parameter. No valid parameter was found for the SCPI command.
-110	Command Header. The command name is not valid.
-113	Command Unknown. The command specified does not exist.
-114	Header Suffix. The numeric suffix for the command name is out of range.
-221	Settings Conflict. The command could not be executed due to the current state of the DPC. Some commands cannot be executed while a program, self-test, or calibration is in progress.
-222	Out of Range. The value is not within the valid range. For pressures check high and low limits.
-281	Cannot create program. Program memory is full.
-282	Illegal Program Name. The name specified is not valid or does not exist.
-284	Program Currently Running. The command cannot be executed while a program is running.
-285	Program Syntax Error. The syntax of the program definition is not correct.
-286	Program Runtime Error. An error occurred while running the program. Usually the set-point is out of range.

Table B-2. Error Messages, continued.

Value	Description and Corrective Action
-313	Configuration Data Lost. The configuration data has been lost and the unit must be recalibrated.
-315	Configuration Data Lost. The configuration data has been lost. Check all parameters to be sure they are correct.
-330	Self-Test Failed. Check the display for the test that failed.
-350	Queue Overflow. The error queue was full and messages were lost.
-400	Query Error. A read request was received when there was nothing to read.
-500	Controller Malfunction. Internal control failure.
-501	High Limit Exceeded. The pressure was greater than the high limit.
-502	Low Limit Exceeded. The pressure was less than the low limit.
-503	Slew Limit Exceeded. The pressure changed faster than the slew limit allowed.
-521	Pressure Over-range. The pressure reading is outside the range of the DPC.
-546	Valve Error (Isolation Valve)
-600	Factory Data Lost. Internal factory constants have been lost. Contact Fluke for more information.
-601	Calibration Mode. The CAL button must be pressed before SCPI calibration commands can be executed.
-701	Pump Pressure Out of Range
-702	Pump Position Out of Range
-703	Reservoir Level Low
-707	Pressure Too High (To Switch Between Sensor Ranges)
-800	Solenoid Over-Temperature (Control Valves)