



Warnings and cautions

- > Do not exceed the safety pressure limit (60 psi) .
- > Be careful of any problem by some pressure media against the explosive or corrusive conditon.
- > Do not tighten connectors over to avoid any damage.
- > Store the pump in the dry and non–corruptive environment.
- > Any safety problems or damages caused by incorrect operation, is beyond Additel's responsibility.

Specification

- > **Pressure range:** 6 psi (0.4 bar) vacuum to 6 psi (0.4 bar) pressure
- > **Temperature:** (0 ~ 50) °C
- > **Humidity:** < 95%RH
- > **Adjusting fineness:** 0.01Pa (0.0001 mbar)
- > **Safety pressure:** < 60 psi
- > **Pressure media:** Air
- > **Size:** Height: 5.71" (145 mm)
Base: 9.65" (245 mm) x 6.50" (165 mm)
- > **Weight:** 3.5 lb (1.6 kg)

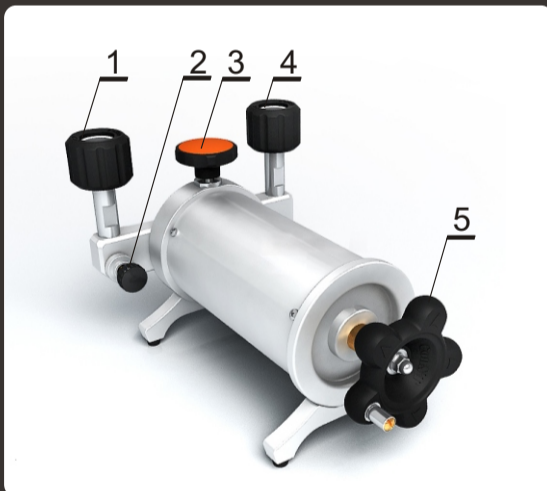
ADT901

Low Pressure Test Pump User's Manual

[Version number:1103V10]

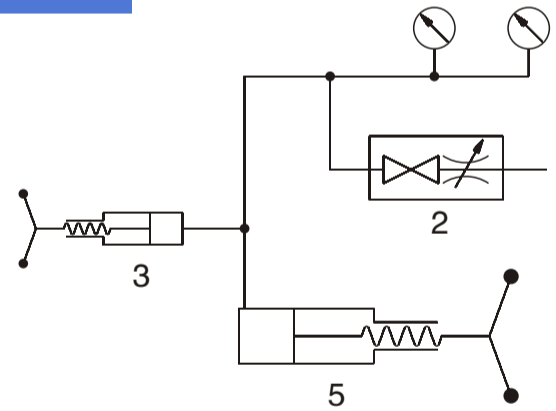


Configuration & Air routine



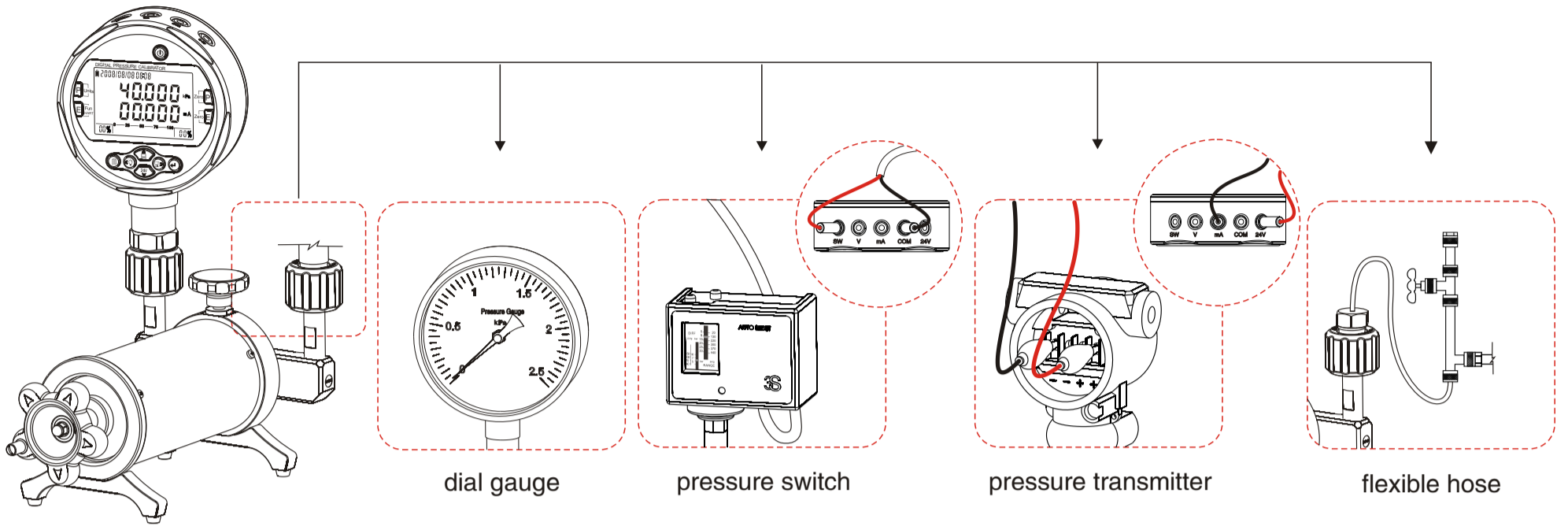
- 1–1/4 NPT quick connector**
- 2–Shut off valve**
(clockwise to close/ anticlockwise to open)
- 3–Fine adjust handle**
(clockwise to increase pressure)
- 4–1/4 NPT quick connector**
- 5–Coarse adjustment handle**
(clockwise to increase pressure)

Air routine



Troubleshooting

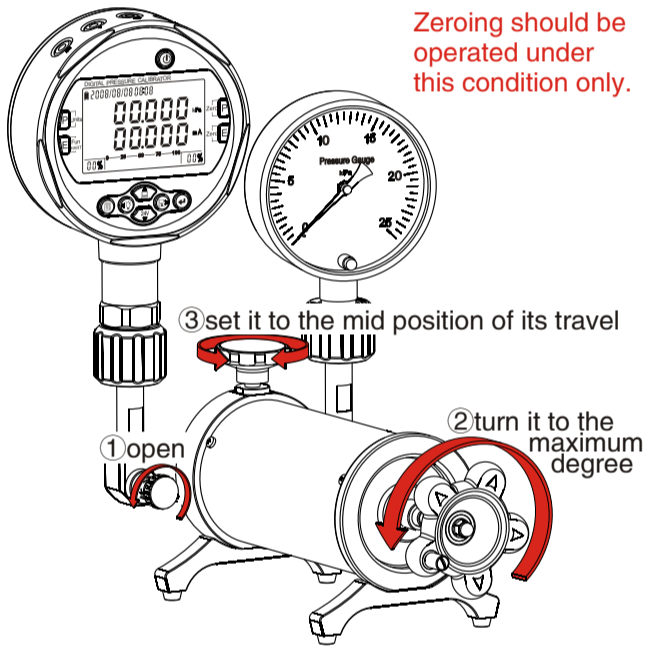
| Problems | Causes | Solutions |
|---------------------------|--|---|
| Hard to coarsely adjust | A. The isolating valve is not closed. | Close the isolating valve. |
| | B. The sealing ring is broken or loosen. | Replace sealing ring. |
| Hard to fine adjust | A. The gauges are not tightened. | Tighten the reference gauge or the gauge under test. |
| | B. The sealing ring is aged or frayed. | Replace the sealing ring. |
| | C. The thread surface is not smooth. | Put in a Teflon seals and turn it tightly. |
| | D. The connector type is unmatched. | Use the right and suitable adapter. |
| Hard to turn the fittings | A. Too tightly turned last time! | Do not apply much force to close the fittings and valves. |
| | B. The assembly is not fitted. | New assembly needs time to abrode. |
| | C. The threads have no lubrication. | Lubricate the thread. |



**Open to atmosphere
Pressure preparation**

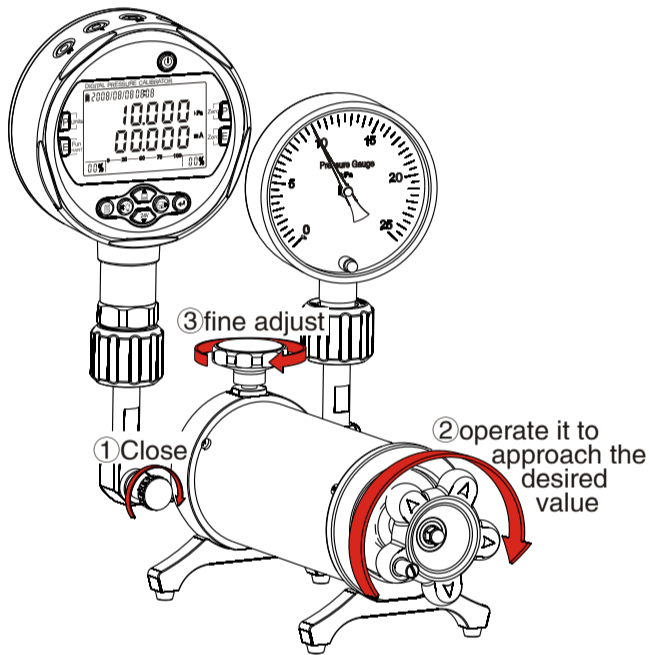
B

Zeroing should be operated under this condition only.



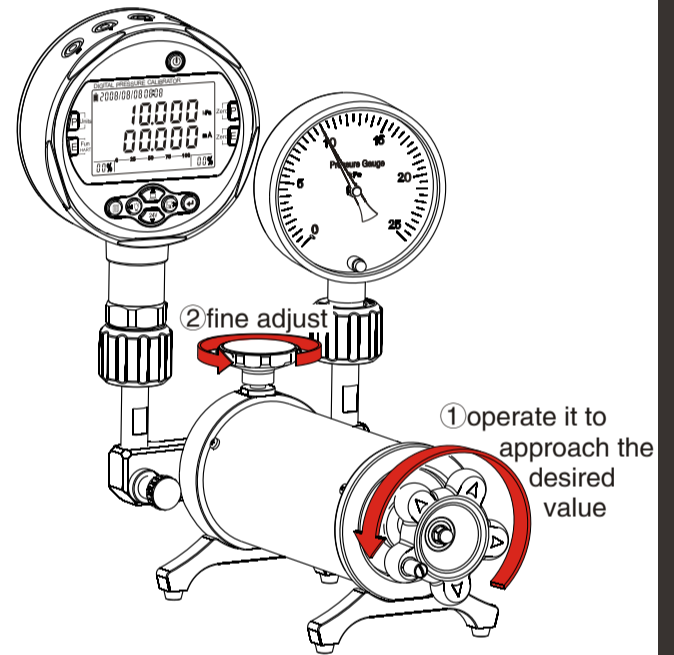
Increase pressure process

C



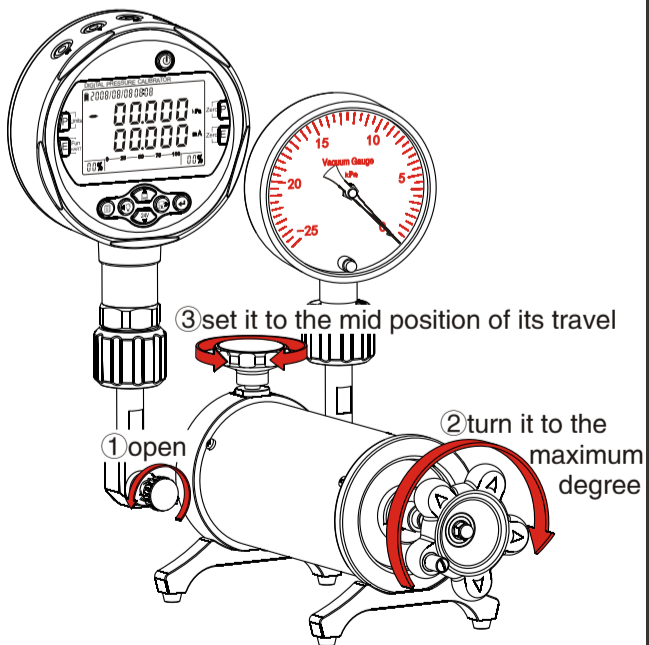
Decrease pressure process

D



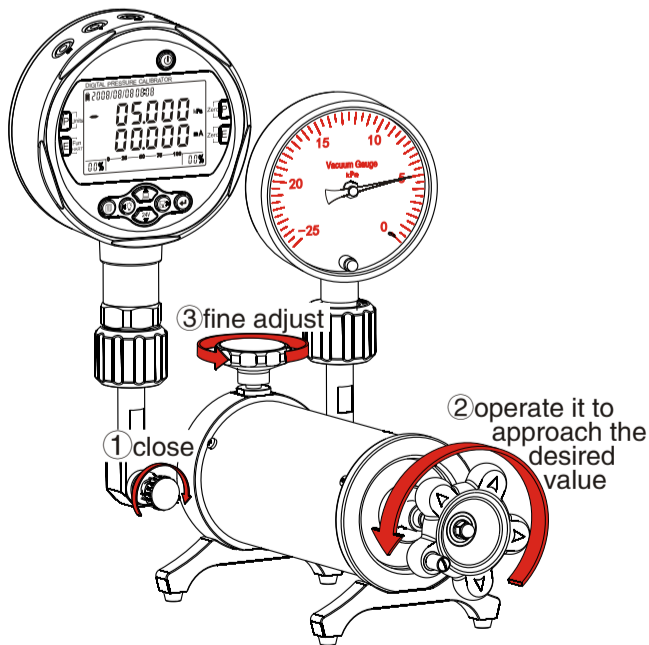
Prepare for vacuum

E



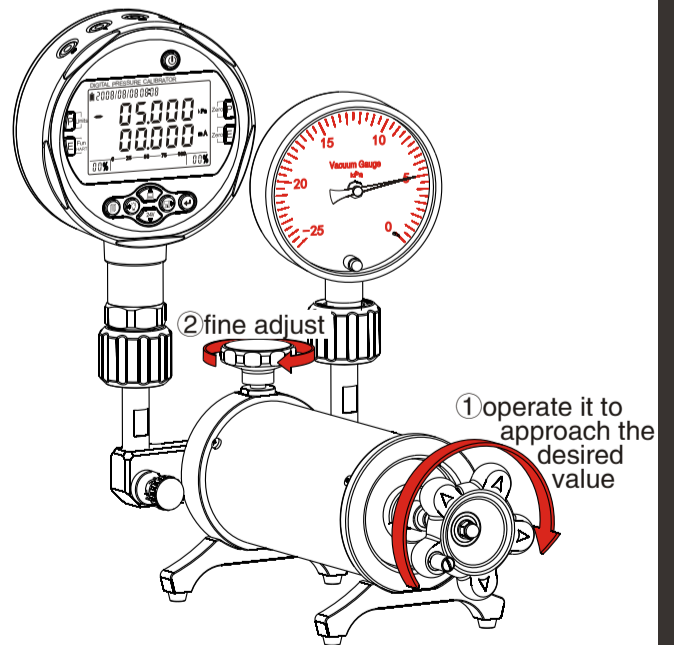
Vacuum process

F



Decrease vacuum process

G



Remark: A: Additel has made a concerted effort to provide complete and current information for the proper use of the equipment. The product specifications and other information contained this manual are subject to change without notice.

B: Above pictures are just for reference.