

MARATHON PRODUCTS

# edl-CO<sub>2</sub><sup>TM</sup> Data Logger

*Extreme low temperature*

The edl-CO<sub>2</sub> is the world's first compact multi-use programmable data logger capable of operating at -81°C while in direct contact with "dry ice" for extended environmental monitoring. Program and set your data logger for up to 6 months and monitor critical applications requiring low temperature environments. Laboratory freezers, blood banks and research laboratories can now benefit from our advanced circuits and latest software enabling technologies.

The internal software provides the following features: start time, stop time, intervals, zoom, statistical analysis, descriptions for special instructions, measurement data and after the fact report generation options. User selectable features also include language conversions from English to: Japanese, French, German, Spanish, and Portuguese.

To start the recorder, simply press the start button!



**Temperature Range**

-80°C to +30°C  
(-112°F to +86°F)

**Temperature Accuracy**

(NIST traceable)  
±0.5°C at mid-point (-25°C)  
±2.0°C at extremes

**Measurement intervals**

2 seconds to months

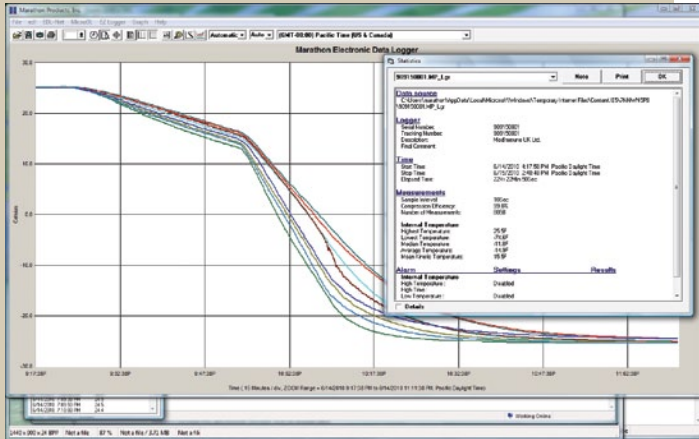
**Number of measurements**

7,600 samples

MARATHON  
PRODUCTS, INC.

*Don't ship without us!®*

**Software Highlights:** Easy-to-use software provides clear graphs. Report Summary & Statistics File Manager, Note Attachment, Zoom, Elapsed Time or Date/Time View, Recorded View, Celsius, Fahrenheit or Kelvin, Display 3D View option. Data can be exported to other Windows programs such as spreadsheet, word-processing or database. Language support for Chinese, English, French, German, Japanese, and Portuguese. Available for Windows 98, NT, 2000, ME and XP. An Enterprise Software version and 21CFR Part 11 Compliant Software are available.



MDAS-Pro Temperature Plots with Logger General Information

**To Order** (Specify Model Numbers)

Model #	Description
edl-co2	Low temperature data logger, 8k memory

**Accessories/Options**

MSHP-102	Marathon software history analysis program
IC-9P	Serial cable-9 pin serial connection cable with 25 pin/9 pin adaptor
Probes	Call for more information.

## edl-CO2 Specifications

Memory EEPROM, Storage: 8k

Temperature Range:

High	+30°C (+86°F)
Low	-80°C (-113°F)

Temperature Accuracy:

At mid-point	±0.5°C (±0.9°F)
At extremes	±2.0°C (±3.6°F)

Measurement Interval:

Programmable from 2 seconds to months

Temperature Sensor:

NIST traceable Precision Thermistor

High and Low Alarm Limits:

LED indicator set by temperature and time

Internal Clock Accuracy:

Better than 2 minutes per month

Indicators:

Power and Alarm

Computer Interface:

Serial Port RS232 Cable, USB Converter

Internal Software Provides:

Start time, Interval, User description, Alarm values, Recording status, Measurement data, Software version, Serial number, Model type

Power Source:

Two AA 3.6 Volt Lithium Batteries. 2 Year Shelf Life — Battery is rated at six months, if used continuously at -80C

Accessories

External probes

Size:

Length	12.85 cm (5.06 in.)
Width	6.73 cm (2.65 in.)
Depth	1.69 cm (0.66 in.)
Weight:	106 g (3.7 oz.)

For information on the edl-CO2 and MDAS-Pro software please contact Marathon Products.

**Please call 1-510-562-6450 x607**  
for more information or to place an order.

[www.marathonproducts.com](http://www.marathonproducts.com)

627 McCormick St., San Leandro, CA 94577 ▪ [jperry@marathonproducts.com](mailto:jperry@marathonproducts.com)