

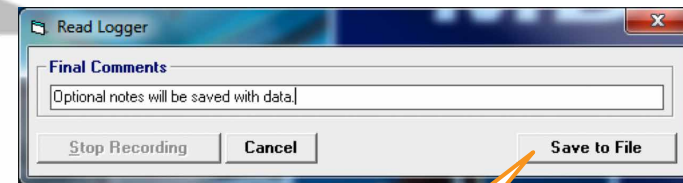
MARATHON PRODUCTS, INC.

Reading the Logger

Start the **MDAS-Pro software** by double clicking on the icon.

On the menu select **edi** and click on **Read the Logger** in the drop down menu.

How to Read General Purpose Loggers -
2c\temp, 3c\temp & edi, edi-JR, edi-CO2

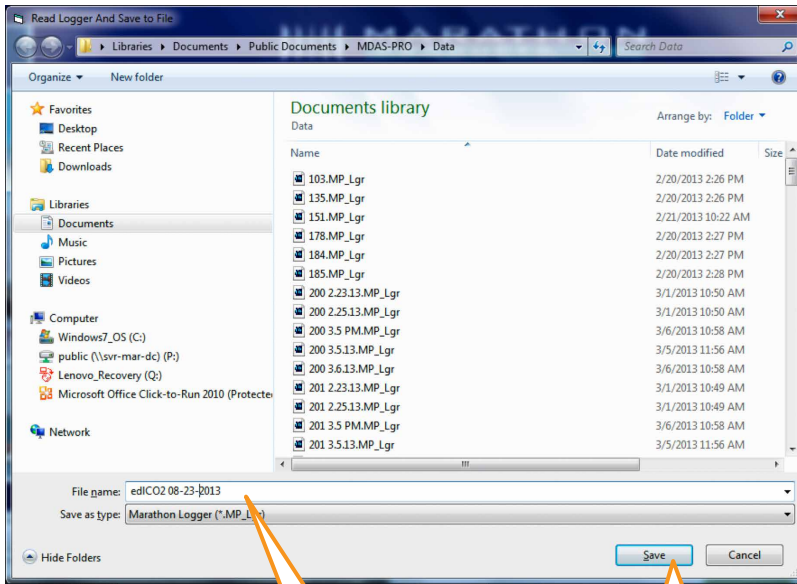


A pop-up box lets the user enter an optional note which will be saved with the data file on the hard drive.

Click on **Save to File** to read the logger and save to a file.

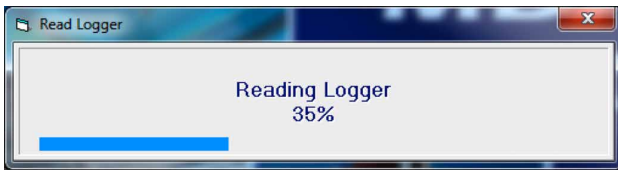
The note is optional.

The **Read Logger And Save to File** window opens.



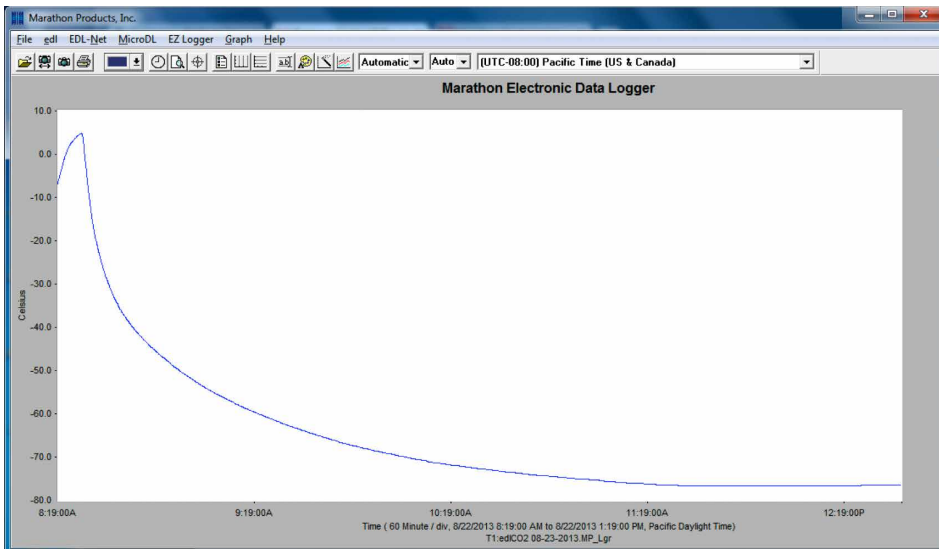
Enter a distinctive file name.

Click **Save**.



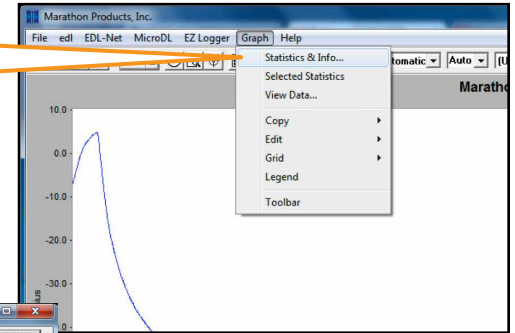
The software will read the logger and save the data to your hard drive.

The data will be plotted and displayed automatically.

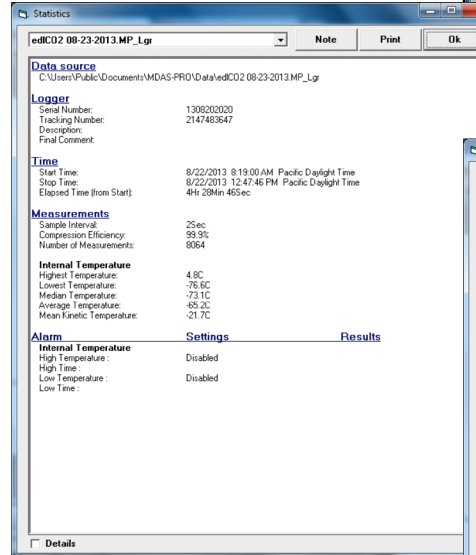


RECORDED SESSION INFORMATION:

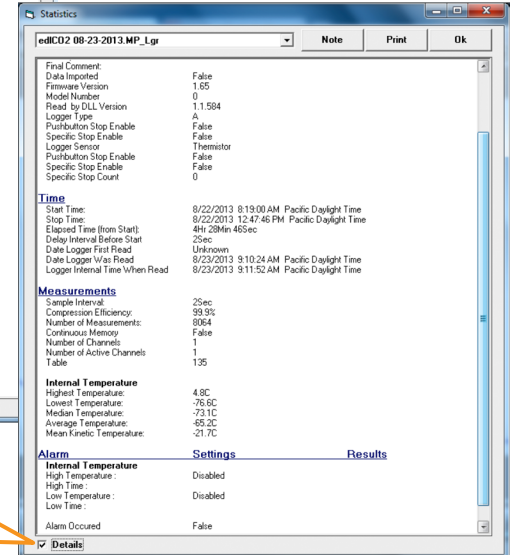
Select **Graph/Statistics & Information** to get information on the logger session being displayed.



Summary information Report.

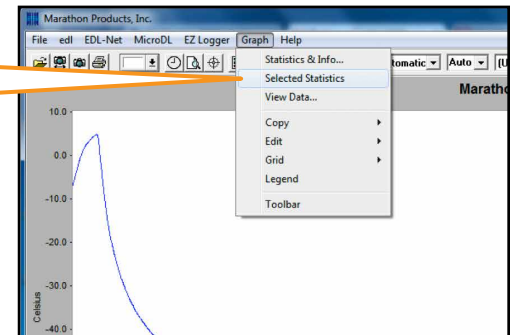


Detailed information Report.

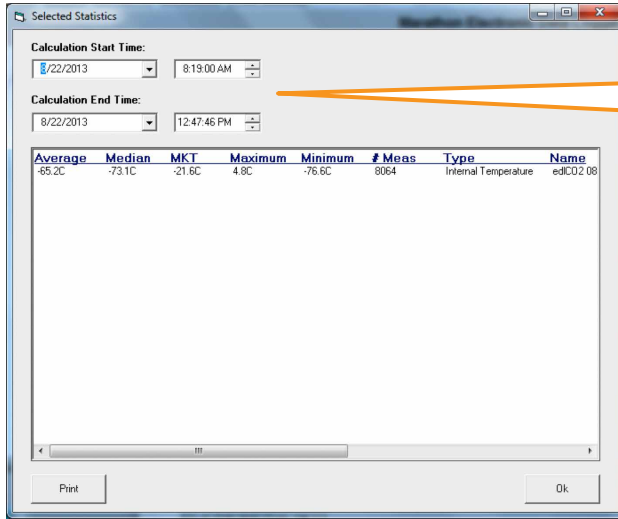


Click **Details** for a detailed report.

Select **Graph/Selected Statistics** to get all the logger statistics for the loggers being displayed.



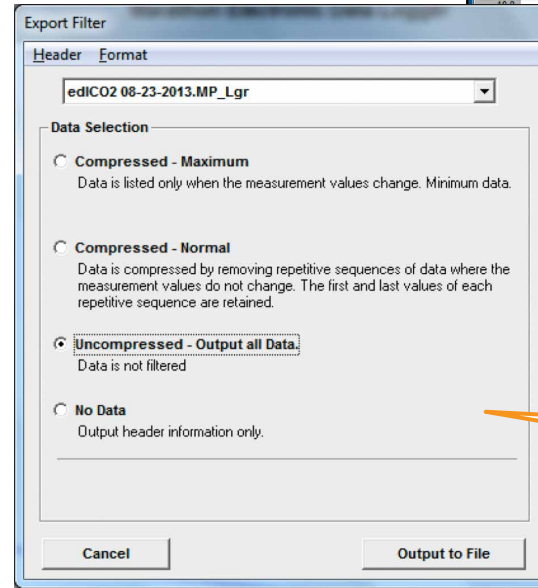
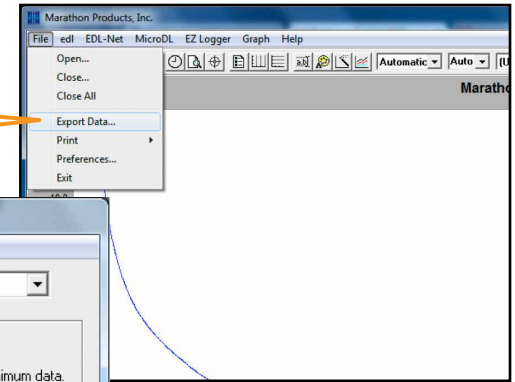
Selected Statistics Report.



User can set the **Start Date & Time** and **End Date & Time** for specific intervals.

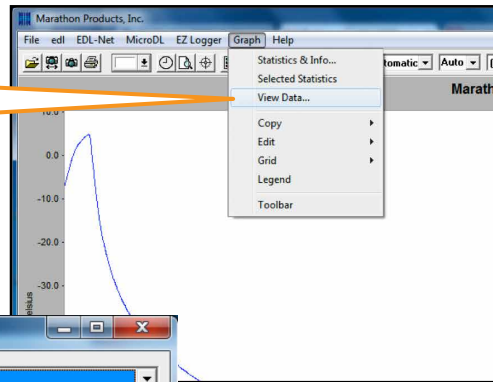
EXPORTING DATA:

Select **File/Export** to export data to a CSV file.

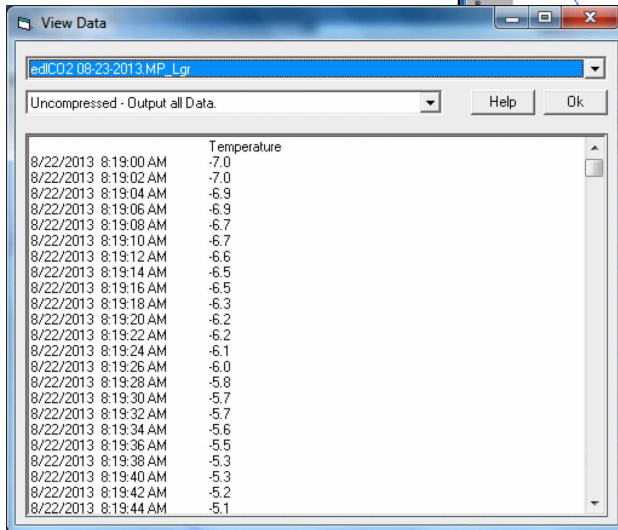


Choose the level of compression for your exported data.

Select **Graph/View Data** for a pop-up window with the data points.



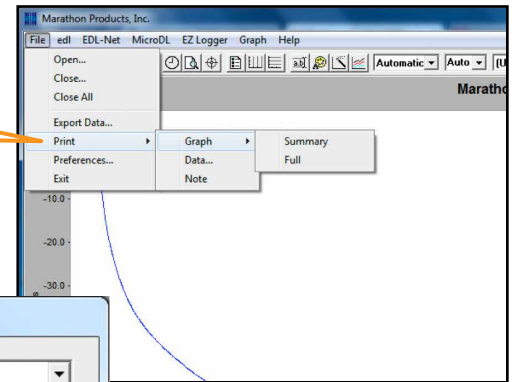
View Data Points Report.



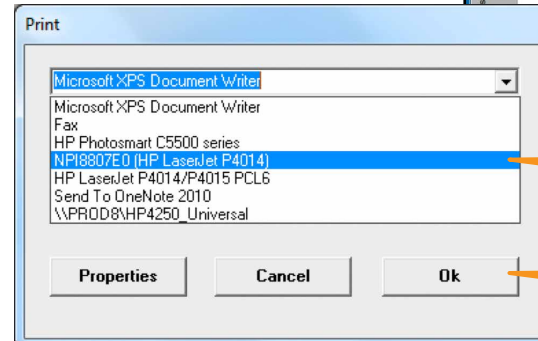
Data can be exported using the **Export** function under **File** menu item.

PRINTING REPORTS:

Select **File/Print** to print reports including graphs.



Choose **Summary** or **Full** for the amount of detail to be included in the report.

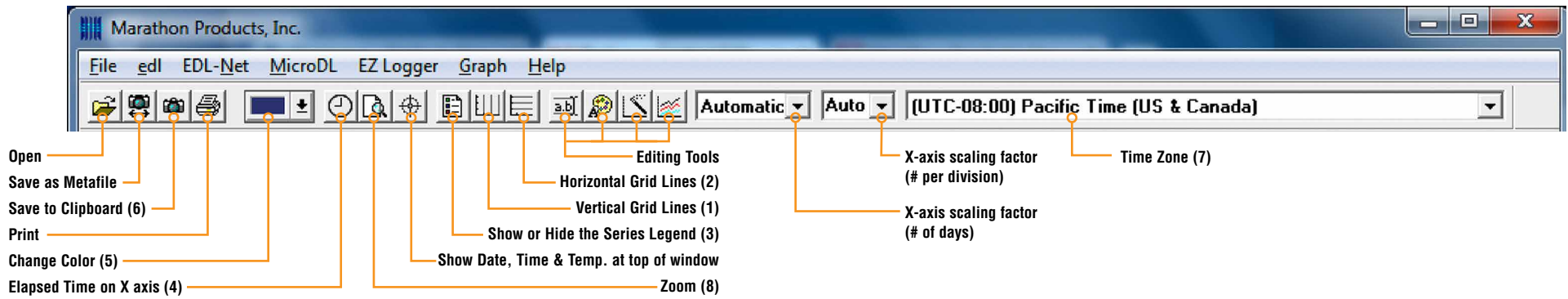


Select the printer.

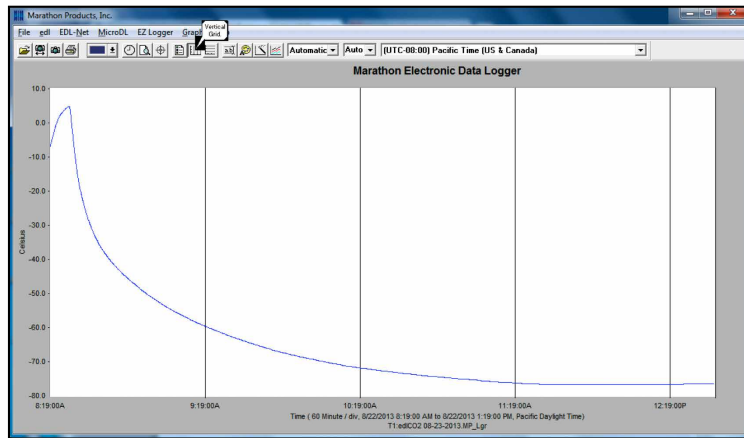
Click **OK**.

The graph and report will be printed to file as a hard copy record.

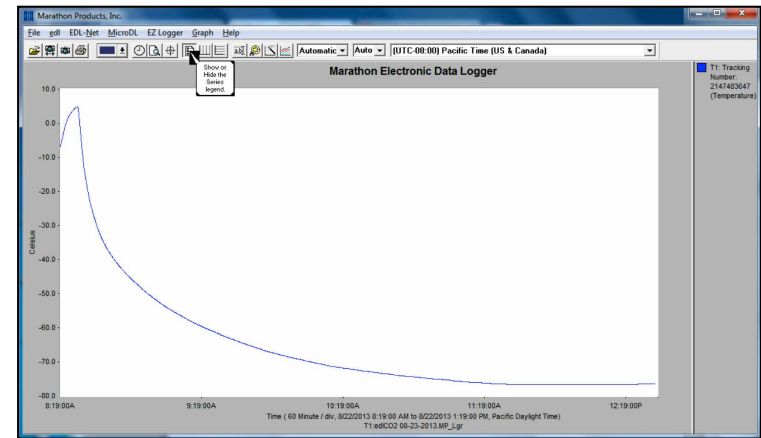
Changing The Graph Properties — Understanding the Menu Bar



1) Select **Vertical Grid** Icon to add vertical grid lines.

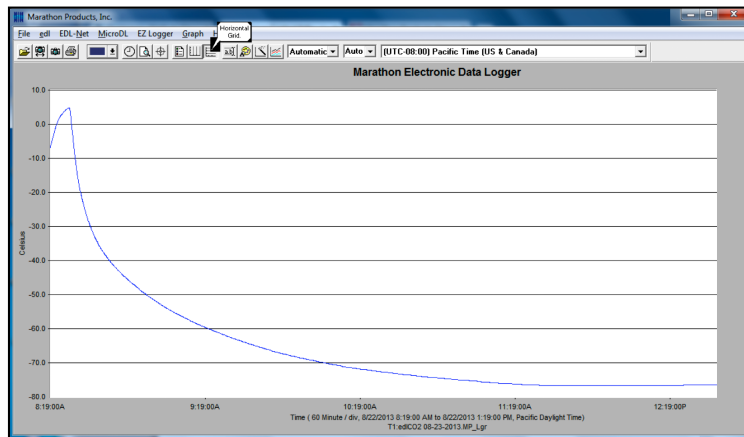


3) Show or Hide in Series Legend:

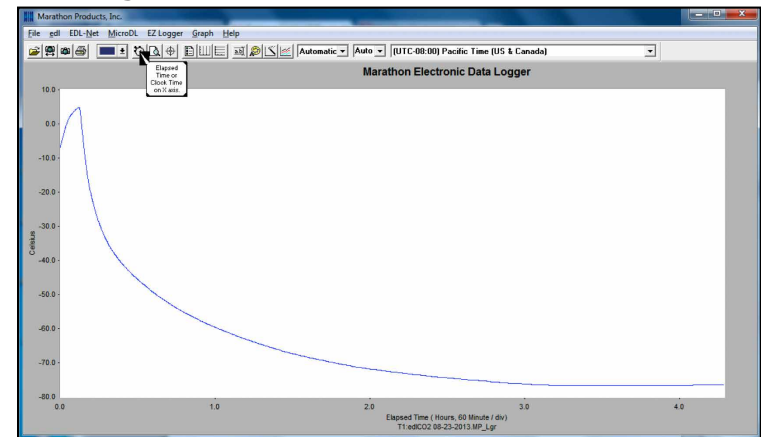


Click to show or hide in the sidebar.

2) Select **Horizontal Grid** Icon to add horizontal grid lines.

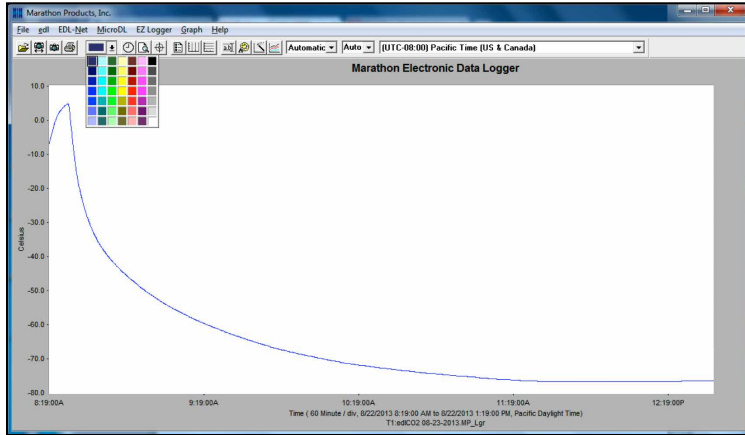


4) Change to Elapsed Time on X-axis:



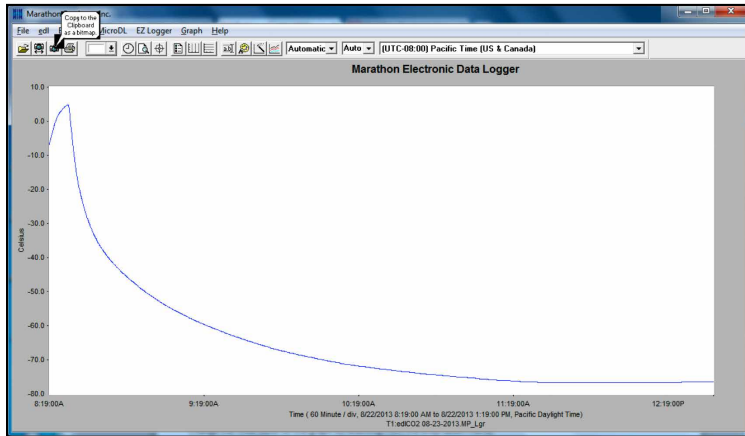
This feature is used to compare temperature plots from different time period.

5) Select a new color from the drop-down palette:



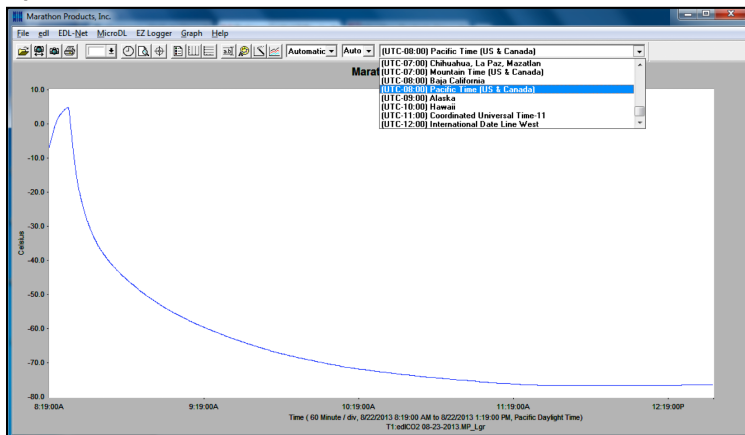
Left click and hold the button down on the rectangle, drag to the portion of the graph where you want to change the color.

6) Copy the plot to the Clipboard as a bitmap image:



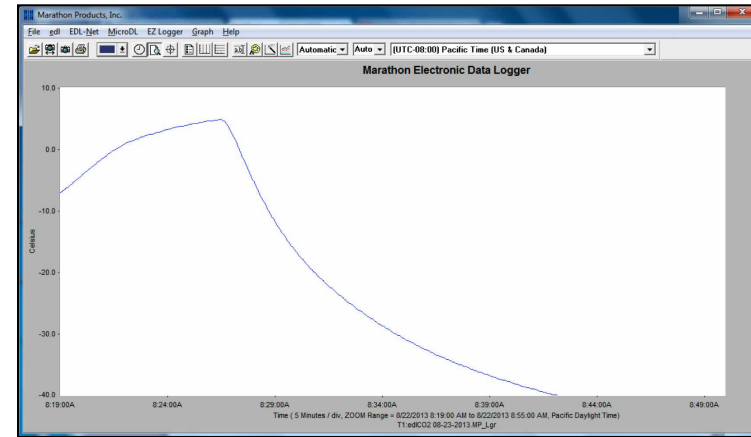
The clipboard image can be pasted into an image editor, a Word document or a PowerPoint presentation.

7) Time Zone:

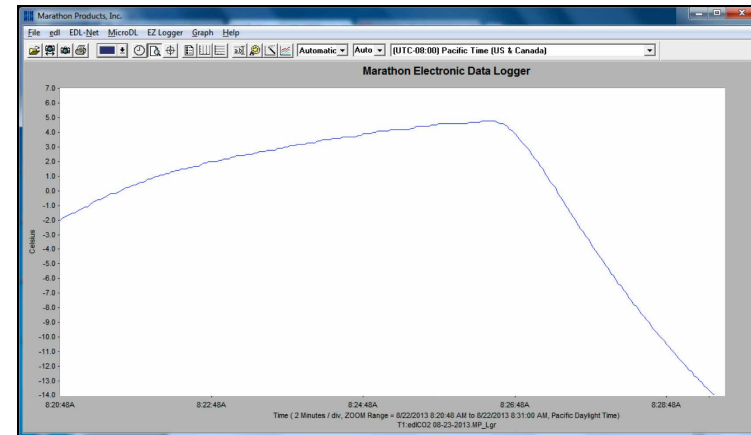
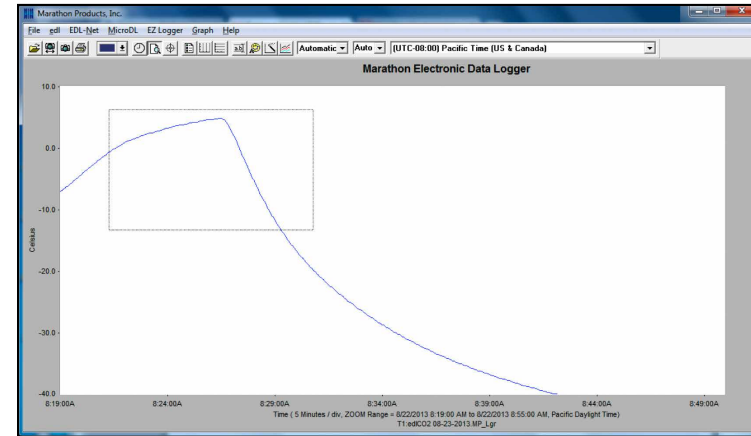


Change the **Time Zone** for the graph by selecting from the drop-down menu.

8) Zoom In/Out:



To Zoom in, left click and hold while dragging cursor.



Right clicking will step out incrementally.